

Vibration-damping elements

Rubber and steel or stainless steel

VIBRATION-DAMPING BODY

Natural rubber NR, hardness 40, 55, 70 tolerance ± 5 Shore A, black colour. Available standard hardness 55 tolerance ± 5 Shore A for executions with AISI 304 stainless steel base.

STANDARD EXECUTIONS

- **DVC.1:** zinc-plated steel plates and threaded studs.
- **DVC.1-SST:** AISI 304 stainless steel plates and threaded studs.
- **DVC.2:** zinc-plated steel plates, threaded stud and boss, threaded blind hole.
- **DVC.2-SST:** AISI 304 stainless steel plates, threaded stud and boss, threaded blind hole.
- **DVC.3:** zinc-plated steel plates and bosses, threaded blind holes.
- **DVC.3-SST:** AISI 304 stainless steel plates and bosses, threaded blind holes.

FEATURES AND APPLICATIONS

DVC. vibration-damping elements have been designed to damp vibrations, shocks and noises produced by moving bodies or non-balanced vibrating masses of equipment and machines.

Unlike DVA vibration-damping elements, under pressure these articles allow more lateral movement without leaving the vertical plane of the metal insert.

Vibrations can cause:

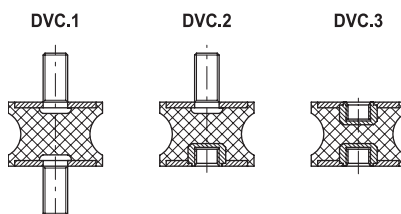
- malfunctioning and reduction of the machine lifespan and/or of the adjacent ones;
- damage to operator's health;
- noise.

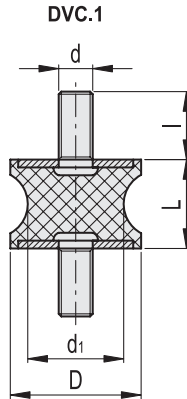
Load diagrams for each single code are available on request.

See technical data and guidelines for the choice on page A53

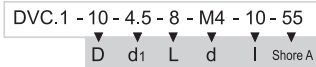
SPECIAL EXECUTIONS ON REQUEST

Natural rubber NR, hardness 40, 70 Shore A ± 5 , for executions with AISI 304 stainless steel base.



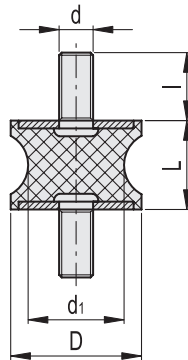


* Complete the description with the desired hardness:
40, 55 or 70 tolerance ± 5 Shore A.



| Description | D | L | d | d ₁ | l | Δ | Hardness 40 Shore A | | | Hardness 55 Shore A | | | Hardness 70 Shore A | | | | | |
|---------------------------|----|------|-----|----------------|----|------|---------------------|--------------|---------------------|---------------------|--------|--------------|---------------------|------------------|--------|--------------|---------------------|------------------|
| | | | | | | | Code | Max load [N] | Max deflection [mm] | Stiffness [N/mm] | Code | Max load [N] | Max deflection [mm] | Stiffness [N/mm] | Code | Max load [N] | Max deflection [mm] | Stiffness [N/mm] |
| DVC.1-10-4.5-8-M4-10-* | 10 | 8 | M4 | 4.5 | 10 | 5 | 433201 | 43 | 2 | 22 | 433001 | 80 | 2 | 40 | 433401 | 105 | 2 | 53 |
| DVC.1-10-8-10-M4-10-* | 10 | 10 | M4 | 8 | 10 | 8 | 433206 | 37 | 2.5 | 15 | 433006 | 69 | 2.5 | 28 | 433406 | 98 | 2.5 | 39 |
| DVC.1-15-8.5-15-M4-10-* | 15 | 15 | M4 | 8.5 | 10 | 12 | 433211 | 113 | 3.75 | 30 | 433011 | 154 | 3.75 | 41 | 433411 | 207 | 3.75 | 55 |
| DVC.1-15-12-15-M4-10-* | 15 | 15 | M4 | 12 | 10 | 14 | 433216 | 121 | 3.75 | 32 | 433016 | 163 | 3.75 | 43 | 433416 | 221 | 3.75 | 59 |
| DVC.1-20-14-15-M6-18-* | 20 | 15 | M6 | 14 | 18 | 18 | 433231 | 211 | 3.75 | 56 | 433031 | 273 | 3.75 | 73 | 433431 | 325 | 3.75 | 87 |
| DVC.1-20-14-19-M6-18-* | 20 | 19 | M6 | 14 | 18 | 25 | 433233 | 193 | 4.75 | 41 | 433033 | 238 | 4.75 | 50 | 433433 | 302 | 4.75 | 64 |
| DVC.1-20-14-20-M6-18-* | 20 | 20 | M6 | 14 | 18 | 26 | 433235 | 191 | 5 | 38 | 433035 | 231 | 5 | 46 | 433435 | 300 | 5 | 60 |
| DVC.1-21-16-22-M6-18-* | 21 | 22 | M6 | 16 | 18 | 28 | 433241 | 205 | 5.5 | 37 | 433041 | 268 | 5.5 | 49 | 433441 | 315 | 5.5 | 57 |
| DVC.1-20-12-30-M6-18-* | 20 | 30 | M6 | 12 | 18 | 30 | 433221 | 126 | 7.5 | 17 | 433021 | 194 | 7.5 | 26 | 433421 | 217 | 7.5 | 29 |
| DVC.1-20-14-30-M6-18-* | 20 | 30 | M6 | 14 | 18 | 32 | 433237 | 475 | 7.5 | 63 | 433037 | 202 | 7.5 | 27 | 433437 | 301 | 7.5 | 40 |
| DVC.1-25-18-20-M6-18-* | 25 | 20 | M6 | 18 | 18 | 31 | 433251 | 539 | 5 | 108 | 433051 | 887 | 5 | 177 | 433451 | 1332 | 5 | 266 |
| DVC.1-25-20-20-M6-18-* | 25 | 20 | M6 | 20 | 18 | 33 | 433256 | 560 | 5 | 112 | 433056 | 902 | 5 | 180 | 433456 | 1380 | 5 | 276 |
| DVC.1-30-22-20-M8-20-* | 30 | 20 | M8 | 22 | 20 | 45 | 433266 | 738 | 5 | 148 | 433066 | 1087 | 5 | 217 | 433466 | 2005 | 5 | 401 |
| DVC.1-30-18-25-M8-20-* | 30 | 25 | M8 | 18 | 20 | 50 | 433261 | 436 | 6.25 | 70 | 433061 | 671 | 6.25 | 107 | 433461 | 1342 | 6.25 | 215 |
| DVC.1-35-31-15-M8-20-* | 35 | 15 | M8 | 31 | 20 | 46 | 433276 | 1120 | 3.75 | 299 | 433076 | 2097 | 3.75 | 559 | 433476 | 3215 | 3.75 | 857 |
| DVC.1-35-25-34-M8-20-* | 35 | 34 | M8 | 25 | 20 | 56 | 433271 | 1073 | 8.5 | 126 | 433071 | 1564 | 8.5 | 184 | 433471 | 2415 | 8.5 | 284 |
| DVC.1-40-30-25-M8-23-* | 40 | 25 | M8 | 30 | 23 | 58 | 433285 | 1823 | 6.25 | 292 | 433085 | 2430 | 6.25 | 389 | 433485 | 3378 | 6.25 | 540 |
| DVC.1-40-25-30-M8-23-* | 40 | 30 | M8 | 25 | 23 | 64 | 433283 | 937 | 7.5 | 125 | 433083 | 1621 | 7.5 | 216 | 433483 | 2246 | 7.5 | 299 |
| DVC.1-40-33-30-M8-23-* | 40 | 30 | M8 | 33 | 23 | 68 | 433289 | 1007 | 7.5 | 134 | 433089 | 1873 | 7.5 | 250 | 433489 | 2423 | 7.5 | 323 |
| DVC.1-40-32-48-M8-23-* | 40 | 48 | M8 | 20 | 23 | 76 | 433281 | 498 | 12 | 42 | 433081 | 705 | 12 | 59 | 433481 | 1123 | 12 | 94 |
| DVC.1-40-32-50-M8-23-* | 40 | 50 | M8 | 32 | 23 | 82 | 433287 | 521 | 12.5 | 42 | 433087 | 795 | 12.5 | 64 | 433487 | 1321 | 12.5 | 106 |
| DVC.1-50-46-15-M10-28-* | 50 | 15 | M10 | 46 | 28 | 94 | 433296 | 1027 | 3.75 | 274 | 433096 | 2430 | 3.75 | 648 | 433496 | 3385 | 3.75 | 903 |
| DVC.1-50-42-30-M10-28-* | 50 | 30 | M10 | 42 | 28 | 184 | 433291 | 1095 | 7.5 | 146 | 433091 | 1523 | 7.5 | 203 | 433491 | 2271 | 7.5 | 303 |
| DVC.1-55-44-45-M10-28-* | 55 | 45 | M10 | 44 | 28 | 233 | 433293 | 911 | 11.25 | 81 | 433093 | 1328 | 11.25 | 118 | 433493 | 1974 | 11.25 | 175 |
| DVC.1-57-25-45-M10-28-* | 57 | 45 | M10 | 25 | 28 | 242 | 433301 | 902 | 11.25 | 80 | 433101 | 1222 | 11.25 | 109 | 433501 | 1765 | 11.25 | 157 |
| DVC.1-60-49-60-M10-28-* | 60 | 60 | M10 | 49 | 28 | 264 | 433306 | 2188 | 15 | 146 | 433106 | 3785 | 15 | 252 | 433506 | 4325 | 15 | 288 |
| DVC.1-70-45-53-M12-37-* | 70 | 53 | M12 | 45 | 37 | 280 | 433311 | 1897 | 13.25 | 143 | 433111 | 2114 | 13.25 | 160 | 433511 | 3228 | 13.25 | 244 |
| DVC.1-72-64-33.5-M12-37-* | 72 | 33.5 | M12 | 64 | 37 | 297 | 433316 | 2875 | 8.38 | 343 | 433116 | 4170 | 8.38 | 498 | 433516 | 7315 | 8.38 | 873 |
| DVC.1-75-60-40-M12-37-* | 75 | 40 | M12 | 60 | 37 | 380 | 433321 | 2409 | 10 | 241 | 433121 | 3610 | 10 | 361 | 433521 | 6988 | 10 | 699 |
| DVC.1-95-80-75-M16-41-* | 95 | 75 | M16 | 80 | 41 | 1090 | 433326 | 7584 | 18.75 | 404 | 433126 | 10865 | 18.75 | 579 | 433526 | 13263 | 18.75 | 707 |

DVC.1-SST



DVC.1 - 10 - 4.5 - 8 - SST - M4 - 10 - 55

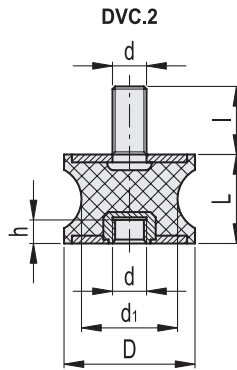
D d1 L Stainless steel d I Shore A

STAINLESS STEEL

| Description | D | L | d | d1 | I | Δ | Hardness 40 Shore A | | | Hardness 55 Shore A | | | Hardness 70 Shore A | | | | | |
|--------------------------------|----|------|-----|-----|----|------|---------------------|--------------|---------------------|---------------------|--------|--------------|---------------------|------------------|------|--------------|---------------------|------------------|
| | | | | | | | Code | Max load [N] | Max deflection [mm] | Stiffness [N/mm] | Code | Max load [N] | Max deflection [mm] | Stiffness [N/mm] | Code | Max load [N] | Max deflection [mm] | Stiffness [N/mm] |
| DVC.1-10-4.5-8-SST-M4-10-55 | 10 | 8 | M4 | 4.5 | 10 | 5 | | 43 | 2 | 22 | 433601 | 80 | 2 | 40 | | 105 | 2 | 53 |
| DVC.1-10-8-10-SST-M4-10-55 | 10 | 10 | M4 | 8 | 10 | 8 | | 37 | 2.5 | 15 | 433606 | 69 | 2.5 | 28 | | 98 | 2.5 | 39 |
| DVC.1-15-8.5-15-SST-M4-10-55 | 15 | 15 | M4 | 8.5 | 10 | 12 | | 113 | 3.75 | 30 | 433611 | 113 | 3.75 | 30 | | 207 | 3.75 | 55 |
| DVC.1-15-12-15-SST-M4-10-55 | 15 | 15 | M4 | 12 | 10 | 14 | | 121 | 3.75 | 32 | 433616 | 163 | 3.75 | 43 | | 221 | 3.75 | 59 |
| DVC.1-20-14-15-SST-M6-18-55 | 20 | 15 | M6 | 14 | 18 | 18 | | 211 | 3.75 | 56 | 433631 | 273 | 3.75 | 73 | | 325 | 3.75 | 87 |
| DVC.1-20-14-19-SST-M6-18-55 | 20 | 19 | M6 | 14 | 18 | 25 | | 193 | 4.75 | 41 | 433633 | 238 | 4.75 | 50 | | 302 | 4.75 | 64 |
| DVC.1-20-14-20-SST-M6-18-55 | 20 | 20 | M6 | 14 | 18 | 26 | | 191 | 5 | 38 | 433635 | 231 | 5 | 46 | | 300 | 5 | 60 |
| DVC.1-21-16-22-SST-M6-18-55 | 21 | 22 | M6 | 16 | 18 | 28 | | 205 | 5.5 | 37 | 433641 | 205 | 5.5 | 37 | | 315 | 5.5 | 57 |
| DVC.1-20-12-30-SST-M6-18-55 | 20 | 30 | M6 | 12 | 18 | 30 | | 126 | 7.5 | 17 | 433621 | 280 | 7.5 | 37 | | 217 | 7.5 | 29 |
| DVC.1-20-14-30-SST-M6-18-55 | 20 | 30 | M6 | 14 | 18 | 32 | | 475 | 7.5 | 63 | 433637 | 507 | 7.5 | 68 | | 301 | 7.5 | 40 |
| DVC.1-25-18-20-SST-M6-18-55 | 25 | 20 | M6 | 18 | 18 | 31 | | 539 | 5 | 108 | 433651 | 887 | 5 | 177 | | 1332 | 5 | 266 |
| DVC.1-25-20-20-SST-M6-18-55 | 25 | 20 | M6 | 20 | 18 | 33 | | 560 | 5 | 112 | 433656 | 560 | 5 | 112 | | 1380 | 5 | 276 |
| DVC.1-30-22-20-SST-M8-20-55 | 30 | 20 | M8 | 22 | 20 | 45 | | 738 | 5 | 148 | 433666 | 1087 | 5 | 217 | | 2005 | 5 | 401 |
| DVC.1-30-18-25-SST-M8-20-55 | 30 | 25 | M8 | 18 | 20 | 50 | ON REQUEST | 436 | 6.25 | 70 | 433661 | 671 | 6.25 | 107 | | 1342 | 6.25 | 215 |
| DVC.1-35-31-15-SST-M8-20-55 | 35 | 15 | M8 | 31 | 20 | 46 | | 1120 | 3.75 | 299 | 433676 | 2097 | 3.75 | 559 | | 3215 | 3.75 | 857 |
| DVC.1-35-25-34-SST-M8-20-55 | 35 | 34 | M8 | 25 | 20 | 56 | | 1073 | 8.5 | 126 | 433671 | 1564 | 8.5 | 184 | | 2415 | 8.5 | 284 |
| DVC.1-40-30-25-SST-M8-23-55 | 40 | 25 | M8 | 30 | 23 | 58 | | 1823 | 6.25 | 292 | 433685 | 2430 | 6.25 | 389 | | 3378 | 6.25 | 540 |
| DVC.1-40-25-30-SST-M8-23-55 | 40 | 30 | M8 | 25 | 23 | 64 | | 937 | 7.5 | 125 | 433683 | 1621 | 7.5 | 216 | | 2246 | 7.5 | 299 |
| DVC.1-40-33-30-SST-M8-23-55 | 40 | 30 | M8 | 33 | 23 | 68 | | 1007 | 7.5 | 134 | 433689 | 1873 | 7.5 | 250 | | 2423 | 7.5 | 323 |
| DVC.1-40-20-48-SST-M8-23-55 | 40 | 48 | M8 | 20 | 23 | 76 | | 498 | 12 | 42 | 433681 | 705 | 12.5 | 56 | | 1123 | 12 | 94 |
| DVC.1-40-32-50-SST-M8-23-55 | 40 | 50 | M8 | 32 | 23 | 82 | | 521 | 12.5 | 42 | 433687 | 795 | 12.5 | 64 | | 1321 | 12.5 | 106 |
| DVC.1-50-46-15-SST-M10-28-55 | 50 | 15 | M10 | 46 | 28 | 94 | | 1027 | 3.75 | 274 | 433696 | 2430 | 3.75 | 648 | | 3385 | 3.75 | 903 |
| DVC.1-50-42-30-SST-M10-28-55 | 50 | 30 | M10 | 42 | 28 | 184 | | 1095 | 7.5 | 146 | 433691 | 1523 | 7.5 | 203 | | 2271 | 7.5 | 303 |
| DVC.1-55-44-45-SST-M10-28-55 | 55 | 45 | M10 | 44 | 28 | 233 | | 911 | 11.25 | 81 | 433693 | 1328 | 11.25 | 118 | | 1974 | 11.25 | 175 |
| DVC.1-57-25-45-SST-M10-28-55 | 57 | 45 | M10 | 25 | 28 | 242 | | 902 | 11.25 | 80 | 433701 | 1222 | 11.25 | 109 | | 1765 | 11.25 | 157 |
| DVC.1-60-49-60-SST-M10-28-55 | 60 | 60 | M10 | 49 | 28 | 264 | | 2188 | 15 | 146 | 433706 | 3785 | 15 | 252 | | 4325 | 15 | 288 |
| DVC.1-70-45-53-SST-M12-37-55 | 70 | 53 | M12 | 45 | 37 | 280 | | 1897 | 13.25 | 143 | 433711 | 2114 | 13.25 | 160 | | 3228 | 13.25 | 244 |
| DVC.1-72-64-33.5-SST-M12-37-55 | 72 | 33.5 | M12 | 64 | 37 | 297 | | 2875 | 8.38 | 343 | 433716 | 4170 | 8.38 | 498 | | 7315 | 8.38 | 873 |
| DVC.1-75-60-40-SST-M12-37-55 | 75 | 40 | M12 | 60 | 37 | 380 | | 2409 | 10 | 241 | 433721 | 3610 | 10 | 361 | | 6988 | 10 | 699 |
| DVC.1-95-80-75-SST-M16-41-55 | 95 | 75 | M16 | 80 | 41 | 1090 | | 7584 | 18.75 | 404 | 433726 | 10865 | 18.75 | 579 | | 13263 | 18.75 | 707 |



Machine elements



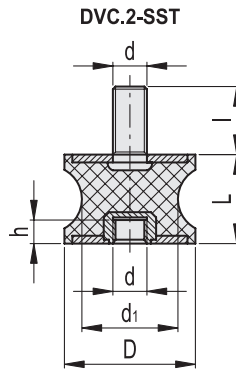
* Complete the description with the desired hardness:
40, 55 or 70 tolerance ± 5 Shore A.

DVC.2 - 10 - 8 - 10 - M4 - 10 - 55
 D d₁ L d h Shore A

| Description | D | L | d | d ₁ | L | h | ⚖ | Hardness 40 Shore A | | | Hardness 55 Shore A | | | Hardness 70 Shore A | | | | | |
|---------------------------|----|------|-----|----------------|----|----|-----|---------------------|--------------|---------------------|---------------------|--------|--------------|---------------------|------------------|--------|--------------|---------------------|------------------|
| | | | | | | | | Code | Max load [N] | Max deflection [mm] | Stiffness [N/mm] | Code | Max load [N] | Max deflection [mm] | Stiffness [N/mm] | Code | Max load [N] | Max deflection [mm] | Stiffness [N/mm] |
| DVC.2-10-8-10-M4-10-* | 10 | 10 | M4 | 8 | 10 | 4 | 3 | 433901 | 94 | 2,5 | 37 | 433751 | 43 | 2,5 | 17 | 434051 | 81 | 2,5 | 32 |
| DVC.2-15-8,5-15-M4-10-* | 15 | 15 | M4 | 8,5 | 10 | 4 | 5 | 433911 | 81 | 3,75 | 22 | 433761 | 132 | 3,75 | 35 | 434061 | 180 | 3,75 | 48 |
| DVC.2-15-12-15-M4-10-* | 15 | 15 | M4 | 12 | 10 | 4 | 6 | 433916 | 132 | 3,75 | 35 | 433766 | 142 | 3,75 | 38 | 434066 | 191 | 3,75 | 51 |
| DVC.2-20-14-15-M6-18-* | 20 | 15 | M6 | 14 | 18 | 6 | 14 | 433923 | 191 | 3,75 | 51 | 433773 | 247 | 3,75 | 66 | 434073 | 319 | 3,75 | 85 |
| DVC.2-20-14-19-M6-18-* | 20 | 19 | M6 | 14 | 18 | 6 | 16 | 433925 | 319 | 4,75 | 67 | 433775 | 226 | 4,75 | 48 | 434075 | 278 | 4,75 | 59 |
| DVC.2-20-14-20-M6-18-* | 20 | 20 | M6 | 14 | 18 | 6 | 17 | 433927 | 278 | 5 | 56 | 433777 | 223 | 5 | 45 | 434077 | 270 | 5 | 54 |
| DVC.2-21-16-22-M6-18-* | 21 | 22 | M6 | 16 | 18 | 6 | 18 | 433931 | 270 | 5,5 | 49 | 433781 | 240 | 5,5 | 44 | 434081 | 314 | 5,5 | 57 |
| DVC.2-20-12-30-M6-18-* | 20 | 30 | M6 | 12 | 18 | 6 | 22 | 433921 | 240 | 7,5 | 32 | 433771 | 147 | 7,5 | 20 | 434071 | 227 | 7,5 | 30 |
| DVC.2-20-14-30-M6-18-* | 20 | 30 | M6 | 14 | 18 | 6 | 25 | 433929 | 173 | 7,5 | 23 | 433779 | 255 | 7,5 | 34 | 434079 | 380 | 7,5 | 51 |
| DVC.2-25-18-20-M6-18-* | 25 | 20 | M6 | 18 | 18 | 6 | 36 | 433941 | 593 | 5 | 119 | 433791 | 631 | 5 | 126 | 434091 | 1038 | 5 | 208 |
| DVC.2-25-20-20-M6-18-* | 25 | 20 | M6 | 20 | 18 | 6 | 39 | 433946 | 1038 | 5 | 208 | 433796 | 655 | 5 | 131 | 434096 | 1055 | 5 | 211 |
| DVC.2-30-22-20-M8-20-* | 30 | 20 | M8 | 22 | 20 | 8 | 44 | 433956 | 655 | 5 | 131 | 433806 | 863 | 5 | 173 | 434106 | 1272 | 5 | 254 |
| DVC.2-30-18-25-M8-20-* | 30 | 25 | M8 | 18 | 20 | 8 | 49 | 433951 | 1272 | 6,25 | 203 | 433801 | 510 | 6,25 | 82 | 434101 | 785 | 6,25 | 126 |
| DVC.2-35-31-15-M8-20-* | 35 | 15 | M8 | 31 | 20 | 8 | 46 | 433966 | 785 | 3,75 | 209 | 433816 | 1310 | 3,75 | 349 | 434116 | 2453 | 3,75 | 654 |
| DVC.2-35-25-34-M8-20-* | 35 | 34 | M8 | 25 | 20 | 8 | 60 | 433961 | 2453 | 8,5 | 289 | 433811 | 1255 | 8,5 | 148 | 434111 | 1830 | 8,5 | 215 |
| DVC.2-40-30-25-M8-23-* | 40 | 25 | M8 | 30 | 23 | 8 | 73 | 433975 | 1830 | 6,25 | 293 | 433825 | 2133 | 6,25 | 341 | 434125 | 2843 | 6,25 | 455 |
| DVC.2-40-25-30-M8-23-* | 40 | 30 | M8 | 25 | 23 | 8 | 76 | 433973 | 2843 | 7,5 | 379 | 433823 | 1096 | 7,5 | 146 | 434123 | 1897 | 7,5 | 253 |
| DVC.2-40-33-30-M8-23-* | 40 | 30 | M8 | 33 | 23 | 8 | 80 | 433979 | 861 | 7,5 | 115 | 433829 | 1178 | 7,5 | 157 | 434129 | 2191 | 7,5 | 292 |
| DVC.2-40-20-48-M8-23-* | 40 | 48 | M8 | 20 | 23 | 8 | 86 | 433971 | 2191 | 12 | 183 | 433821 | 583 | 12 | 49 | 434121 | 825 | 12 | 69 |
| DVC.2-40-32-50-M8-23-* | 40 | 50 | M8 | 32 | 23 | 8 | 94 | 433977 | 825 | 12,5 | 66 | 433827 | 610 | 12,5 | 49 | 434127 | 930 | 12,5 | 74 |
| DVC.2-50-42-30-M10-28-* | 50 | 30 | M10 | 42 | 28 | 10 | 112 | 433981 | 2843 | 7,5 | 379 | 433831 | 1281 | 7,5 | 171 | 434131 | 1782 | 7,5 | 238 |
| DVC.2-55-44-45-M10-28-* | 55 | 45 | M10 | 44 | 28 | 10 | 162 | 433986 | 1782 | 11,25 | 158 | 433836 | 1066 | 11,25 | 95 | 434136 | 1554 | 11,25 | 138 |
| DVC.2-57-25-45-M10-28-* | 57 | 45 | M10 | 25 | 28 | 10 | 155 | 433991 | 1554 | 11,25 | 138 | 433841 | 1055 | 11,25 | 94 | 434141 | 1430 | 11,25 | 127 |
| DVC.2-60-49-60-M10-28-* | 60 | 60 | M10 | 49 | 28 | 10 | 245 | 433996 | 1430 | 15 | 95 | 433846 | 2560 | 15 | 171 | 434146 | 4428 | 15 | 295 |
| DVC.2-70-45-53-M12-37-* | 70 | 53 | M12 | 45 | 37 | 12 | 321 | 434001 | 4428 | 13,25 | 334 | 433851 | 2219 | 13,25 | 168 | 434151 | 2473 | 13,25 | 187 |
| DVC.2-72-64-33,5-M12-37-* | 72 | 33,5 | M12 | 64 | 37 | 12 | 385 | 434006 | 2473 | 8,38 | 295 | 433856 | 3364 | 8,38 | 402 | 434156 | 4879 | 8,38 | 583 |
| DVC.2-75-60-40-M12-37-* | 75 | 40 | M12 | 60 | 37 | 12 | 450 | 434011 | 4879 | 10 | 488 | 433861 | 2819 | 10 | 282 | 434161 | 4224 | 10 | 422 |
| DVC.2-95-80-75-M16-41-* | 95 | 75 | M16 | 80 | 41 | 16 | 740 | 434016 | 4224 | 18,75 | 225 | 433866 | 8873 | 18,75 | 473 | 434166 | 12712 | 18,75 | 678 |



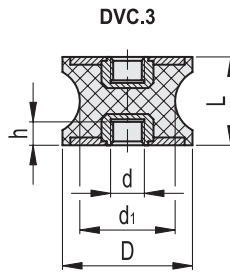
Machine elements 9



DVC.2 - 10 - 8 - 10 - SST - M4 - 10 - 55
 D d1 L Stainless steel d l Shore A

STAINLESS STEEL

| Description | D | L | d | d1 | l | h | Hardness 40 Shore A | | | Hardness 55 Shore A | | | Hardness 70 Shore A | | | | | |
|--------------------------------|----|------|-----|-----|----|----|---------------------|--------------|---------------------|---------------------|--------|--------------|---------------------|------------------|------|--------------|---------------------|------------------|
| | | | | | | | Code | Max load [N] | Max deflection [mm] | Stiffness [N/mm] | Code | Max load [N] | Max deflection [mm] | Stiffness [N/mm] | Code | Max load [N] | Max deflection [mm] | Stiffness [N/mm] |
| DVC.2-10-8-10-SST-M4-10-55 | 10 | 10 | M4 | 8 | 10 | 4 | 3 | 94 | 2.5 | 37 | 434201 | 115 | 2.5 | 46 | 81 | 2.5 | 32 | |
| DVC.2-15-8,5-15-SST-M4-10-55 | 15 | 15 | M4 | 8,5 | 10 | 4 | 5 | 94 | 2.5 | 37 | 434211 | 242 | 3,75 | 65 | 81 | 2,5 | 32 | |
| DVC.2-15-12-15-SST-M4-10-55 | 15 | 15 | M4 | 12 | 10 | 4 | 6 | 81 | 3,75 | 22 | 434216 | 259 | 3,75 | 69 | 180 | 3,75 | 48 | |
| DVC.2-20-14-15-SST-M6-18-55 | 20 | 15 | M6 | 14 | 18 | 6 | 14 | 132 | 3,75 | 35 | 434223 | 380 | 3,75 | 101 | 191 | 3,75 | 51 | |
| DVC.2-20-14-19-SST-M6-18-55 | 20 | 19 | M6 | 14 | 18 | 6 | 16 | 191 | 3,75 | 51 | 434225 | 353 | 4,75 | 74 | 319 | 3,75 | 85 | |
| DVC.2-20-14-20-SST-M6-18-55 | 20 | 20 | M6 | 14 | 18 | 6 | 17 | 319 | 4,75 | 67 | 434227 | 351 | 5 | 70 | 278 | 4,75 | 59 | |
| DVC.2-21-16-22-SST-M6-18-55 | 21 | 22 | M6 | 16 | 18 | 6 | 18 | 278 | 5 | 56 | 434231 | 369 | 5,5 | 67 | 270 | 5 | 54 | |
| DVC.2-20-12-30-SST-M6-18-55 | 20 | 30 | M6 | 12 | 18 | 6 | 22 | 270 | 5,5 | 49 | 434221 | 254 | 7,5 | 34 | 314 | 5,5 | 57 | |
| DVC.2-20-14-30-SST-M6-18-55 | 20 | 30 | M6 | 14 | 18 | 6 | 25 | 240 | 7,5 | 32 | 434229 | 255 | 7,5 | 34 | 227 | 7,5 | 30 | |
| DVC.2-25-18-20-SST-M6-18-55 | 25 | 20 | M6 | 18 | 18 | 6 | 36 | 328 | 7,5 | 44 | 434241 | 1558 | 5 | 312 | 236 | 7,5 | 32 | |
| DVC.2-25-20-20-SST-M6-18-55 | 25 | 20 | M6 | 20 | 18 | 6 | 39 | 593 | 5 | 119 | 434246 | 1615 | 5 | 323 | 1038 | 5 | 208 | |
| DVC.2-30-22-20-SST-M8-20-55 | 30 | 20 | M8 | 22 | 20 | 8 | 44 | 1038 | 5 | 208 | 434256 | 2346 | 5 | 469 | 1055 | 5 | 211 | |
| DVC.2-30-18-25-SST-M8-20-55 | 30 | 25 | M8 | 18 | 20 | 8 | 49 | ON REQUEST | 655 | 5 | 131 | 434251 | 1570 | 6,25 | 251 | 1272 | 5 | 254 |
| DVC.2-35-31-15-SST-M8-20-55 | 35 | 15 | M8 | 31 | 20 | 8 | 46 | 1272 | 6,25 | 203 | 434266 | 3762 | 3,75 | 1003 | 785 | 6,25 | 126 | |
| DVC.2-35-25-34-SST-M8-20-55 | 35 | 34 | M8 | 25 | 20 | 8 | 60 | 785 | 3,75 | 209 | 434261 | 2826 | 8,5 | 332 | 2453 | 3,75 | 654 | |
| DVC.2-40-30-25-SST-M8-23-55 | 40 | 25 | M8 | 30 | 23 | 8 | 73 | 2453 | 8,5 | 289 | 434275 | 3952 | 6,25 | 632 | 1830 | 8,5 | 215 | |
| DVC.2-40-25-30-SST-M8-23-55 | 40 | 30 | M8 | 25 | 23 | 8 | 76 | 1830 | 6,25 | 293 | 434273 | 2628 | 7,5 | 350 | 2843 | 6,25 | 455 | |
| DVC.2-40-33-30-SST-M8-23-55 | 40 | 30 | M8 | 33 | 23 | 8 | 80 | 2843 | 7,5 | 379 | 434279 | 2835 | 7,5 | 378 | 1897 | 7,5 | 253 | |
| DVC.2-40-20-48-SST-M8-23-55 | 40 | 48 | M8 | 20 | 23 | 8 | 86 | 1897 | 7,5 | 253 | 434271 | 1314 | 12 | 109 | 2191 | 7,5 | 292 | |
| DVC.2-40-32-50-SST-M8-23-55 | 40 | 50 | M8 | 32 | 23 | 8 | 94 | 2191 | 12 | 183 | 434277 | 1546 | 12,5 | 124 | 825 | 12 | 69 | |
| DVC.2-50-42-30-SST-M10-28-55 | 50 | 30 | M10 | 42 | 28 | 10 | 112 | 825 | 12,5 | 66 | 434281 | 2657 | 7,5 | 354 | 930 | 12,5 | 74 | |
| DVC.2-55-44-45-SST-M10-28-55 | 55 | 45 | M10 | 44 | 28 | 10 | 162 | 2843 | 7,5 | 379 | 434286 | 2310 | 11,25 | 205 | 1782 | 7,5 | 238 | |
| DVC.2-57-25-45-SST-M10-28-55 | 57 | 45 | M10 | 25 | 28 | 10 | 155 | 1782 | 11,25 | 158 | 434291 | 2065 | 11,25 | 184 | 1554 | 11,25 | 138 | |
| DVC.2-60-49-60-SST-M10-28-55 | 60 | 60 | M10 | 49 | 28 | 10 | 245 | 1554 | 11,25 | 138 | 434296 | 5060 | 15 | 337 | 1430 | 11,25 | 127 | |
| DVC.2-70-45-53-SST-M12-37-55 | 70 | 53 | M12 | 45 | 37 | 12 | 321 | 1430 | 15 | 95 | 434301 | 3777 | 13,25 | 285 | 4428 | 15 | 295 | |
| DVC.2-72-64-33-5-SST-M12-37-55 | 72 | 33,5 | M12 | 64 | 37 | 12 | 385 | 4428 | 13,25 | 334 | 434306 | 8559 | 8,38 | 1022 | 2473 | 13,25 | 187 | |
| DVC.2-75-60-40-SST-M12-37-55 | 75 | 40 | M12 | 60 | 37 | 12 | 450 | 2473 | 8,38 | 295 | 434311 | 8176 | 10 | 818 | 4879 | 8,38 | 583 | |
| DVC.2-95-80-75-SST-M16-41-55 | 95 | 75 | M16 | 80 | 41 | 16 | 740 | 4879 | 10 | 488 | 434316 | 15518 | 18,75 | 828 | 4224 | 10 | 422 | |



* Complete the description with the desired hardness:
40, 55 or 70 tolerance ± 5 Shore A.

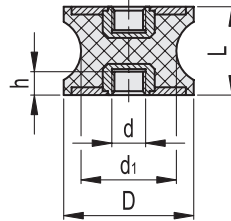
DVC.3 - 15 - 8.5 - 15 - M4 - 55
 D d1 L d Shore A

| Description | D | L | d | d ₁ | h | ⚖ | Hardness 40 Shore A | | | Hardness 55 Shore A | | | Hardness 70 Shore A | | | | | |
|------------------------|----|------|-----|----------------|----|-----|---------------------|--------------|---------------------|---------------------|--------|--------------|---------------------|------------------|--------|--------------|---------------------|------------------|
| | | | | | | | Code | Max load [N] | Max deflection [mm] | Stiffness [N/mm] | Code | Max load [N] | Max deflection [mm] | Stiffness [N/mm] | Code | Max load [N] | Max deflection [mm] | Stiffness [N/mm] |
| DVC.3-15-8.5-15-M4.* | 15 | 15 | M4 | 8.5 | 4 | 6 | 434601 | 94 | 3.75 | 25 | 434501 | 155 | 3.75 | 41 | 434701 | 211 | 3.75 | 56 |
| DVC.3-15-12-15-M4.* | 15 | 15 | M4 | 12 | 4 | 8 | 434606 | 155 | 3.75 | 41 | 434506 | 166 | 3.75 | 44 | 434706 | 223 | 3.75 | 60 |
| DVC.3-20-14-15-M6.* | 20 | 15 | M6 | 14 | 6 | 13 | 434613 | 223 | 3.75 | 60 | 434513 | 289 | 3.75 | 77 | 434713 | 374 | 3.75 | 100 |
| DVC.3-20-14-19-M6.* | 20 | 19 | M6 | 14 | 6 | 16 | 434615 | 374 | 4.75 | 79 | 434515 | 264 | 4.75 | 56 | 434715 | 326 | 4.75 | 69 |
| DVC.3-20-14-20-M6.* | 20 | 20 | M6 | 14 | 6 | 17 | 434617 | 326 | 5 | 65 | 434517 | 261 | 5 | 52 | 434717 | 316 | 5 | 63 |
| DVC.3-21-16-22-M6.* | 21 | 22 | M6 | 16 | 6 | 18 | 434621 | 316 | 5.5 | 57 | 434521 | 281 | 5.5 | 51 | 434721 | 367 | 5.5 | 67 |
| DVC.3-20-12-30-M6.* | 20 | 30 | M6 | 12 | 6 | 19 | 434611 | 281 | 7.5 | 37 | 434511 | 172 | 7.5 | 23 | 434711 | 266 | 7.5 | 35 |
| DVC.3-20-14-30-M6.* | 20 | 30 | M6 | 14 | 6 | 23 | 434619 | 383 | 7.5 | 51 | 434519 | 650 | 7.5 | 87 | 434719 | 277 | 7.5 | 37 |
| DVC.3-25-18-20-M6.* | 25 | 20 | M6 | 18 | 6 | 27 | 434631 | 694 | 5 | 139 | 434531 | 738 | 5 | 148 | 434731 | 1214 | 5 | 243 |
| DVC.3-25-20-20-M6.* | 25 | 20 | M6 | 20 | 6 | 30 | 434636 | 1214 | 5 | 243 | 434536 | 767 | 5 | 153 | 434736 | 1235 | 5 | 247 |
| DVC.3-30-22-20-M8.* | 30 | 20 | M8 | 22 | 8 | 39 | 434643 | 767 | 5 | 153 | 434543 | 1010 | 5 | 202 | 434743 | 1488 | 5 | 298 |
| DVC.3-30-18-25-M8.* | 30 | 25 | M8 | 18 | 8 | 42 | 434641 | 1488 | 6.25 | 238 | 434541 | 597 | 6.25 | 95 | 434741 | 919 | 6.25 | 147 |
| DVC.3-35-25-34-M8.* | 35 | 34 | M8 | 25 | 8 | 53 | 434645 | 2871 | 8.5 | 338 | 434545 | 1469 | 8.5 | 173 | 434745 | 2141 | 8.5 | 252 |
| DVC.3-40-30-25-M8.* | 40 | 25 | M8 | 30 | 8 | 64 | 434655 | 2141 | 6.25 | 343 | 434555 | 2496 | 6.25 | 399 | 434755 | 3326 | 6.25 | 532 |
| DVC.3-40-25-30-M8.* | 40 | 30 | M8 | 25 | 8 | 72 | 434653 | 3326 | 7.5 | 444 | 434553 | 1283 | 7.5 | 171 | 434753 | 2219 | 7.5 | 296 |
| DVC.3-40-33-30-M8.* | 40 | 30 | M8 | 33 | 8 | 80 | 434659 | 2219 | 7.5 | 296 | 434559 | 1378 | 7.5 | 184 | 434759 | 2564 | 7.5 | 342 |
| DVC.3-40-32-50-M8.* | 40 | 50 | M8 | 32 | 8 | 98 | 434657 | 2564 | 12.5 | 205 | 434557 | 682 | 12.5 | 55 | 434757 | 965 | 12.5 | 77 |
| DVC.3-40-20-48-M8.* | 40 | 48 | M8 | 20 | 8 | 86 | 434651 | 965 | 12 | 80 | 434551 | 713 | 12 | 59 | 434751 | 1088 | 12 | 91 |
| DVC.3-50-42-30-M10.* | 50 | 30 | M10 | 42 | 10 | 125 | 434656 | 3326 | 7.5 | 444 | 434556 | 1499 | 7.5 | 200 | 434756 | 2085 | 7.5 | 278 |
| DVC.3-55-44-45-M10.* | 55 | 45 | M10 | 44 | 10 | 150 | 434661 | 2085 | 11.25 | 185 | 434561 | 1247 | 11.25 | 111 | 434761 | 1818 | 11.25 | 162 |
| DVC.3-57-25-45-M10.* | 57 | 45 | M10 | 25 | 10 | 140 | 434666 | 1818 | 11.25 | 162 | 434566 | 1235 | 11.25 | 110 | 434766 | 1673 | 11.25 | 149 |
| DVC.3-60-49-60-M10.* | 60 | 60 | M10 | 49 | 10 | 310 | 434671 | 1673 | 15 | 112 | 434571 | 2995 | 15 | 200 | 434771 | 5181 | 15 | 345 |
| DVC.3-70-45-53-M12.* | 70 | 53 | M12 | 45 | 12 | 336 | 434676 | 5181 | 13.25 | 391 | 434576 | 2597 | 13.25 | 196 | 434776 | 2894 | 13.25 | 218 |
| DVC.3-72-64-33.5-M12.* | 72 | 33.5 | M12 | 64 | 12 | 342 | 434681 | 2894 | 8.38 | 346 | 434581 | 3936 | 8.38 | 470 | 434781 | 5708 | 8.38 | 682 |
| DVC.3-75-60-40-M12.* | 75 | 40 | M12 | 60 | 12 | 360 | 434686 | 5708 | 10 | 571 | 434586 | 3298 | 10 | 330 | 434786 | 4942 | 10 | 494 |
| DVC.3-95-80-75-M16.* | 95 | 75 | M16 | 80 | 16 | 690 | 434691 | 4942 | 18.75 | 264 | 434591 | 10382 | 18.75 | 554 | 434791 | 14873 | 18.75 | 793 |



Machine elements 9

DVC.3-SST



DVC.3 - 15 - 8.5 - 15 - SST - M4 - 55
 D d1 L Stainless steel d Shore A

STAINLESS STEEL

| Description | D | L | d | d1 | h | △ | Hardness 40 Shore A | | | Hardness 55 Shore A | | | Hardness 70 Shore A | | | | | |
|-----------------------------|----|------|-----|-----|----|-----|---------------------|--------------|---------------------|---------------------|--------|--------------|---------------------|------------------|------------|--------------|---------------------|------------------|
| | | | | | | | Code | Max load [N] | Max deflection [mm] | Stiffness [N/mm] | Code | Max load [N] | Max deflection [mm] | Stiffness [N/mm] | Code | Max load [N] | Max deflection [mm] | Stiffness [N/mm] |
| DVC.3-15-8.5-15-SST-M4-55 | 15 | 15 | M4 | 8.5 | 4 | 6 | | 94 | 3,75 | 25 | 434801 | 283 | 3,75 | 76 | | 211 | 3,75 | 56 |
| DVC.3-15-12-15-SST-M4-55 | 15 | 15 | M4 | 12 | 4 | 8 | | 94 | 3,75 | 25 | 434806 | 303 | 3,75 | 81 | | 211 | 3,75 | 56 |
| DVC.3-20-14-15-SST-M6-55 | 20 | 15 | M6 | 14 | 6 | 13 | | 155 | 3,75 | 41 | 434813 | 445 | 3,75 | 119 | | 223 | 3,75 | 60 |
| DVC.3-20-14-19-SST-M6-55 | 20 | 19 | M6 | 14 | 6 | 16 | | 223 | 3,75 | 60 | 434815 | 413 | 4,75 | 87 | | 374 | 3,75 | 100 |
| DVC.3-20-14-20-SST-M6-55 | 20 | 20 | M6 | 14 | 6 | 17 | | 374 | 4,75 | 79 | 434817 | 411 | 5 | 82 | | 326 | 4,75 | 69 |
| DVC.3-21-16-22-SST-M6-55 | 21 | 22 | M6 | 16 | 6 | 18 | | 326 | 5 | 65 | 434821 | 431 | 5,5 | 78 | | 316 | 5 | 63 |
| DVC.3-20-12-30-SST-M6-55 | 20 | 30 | M6 | 12 | 6 | 19 | | 316 | 5,5 | 57 | 434811 | 297 | 7,5 | 40 | | 367 | 5,5 | 67 |
| DVC.3-20-14-30-SST-M6-55 | 20 | 30 | M6 | 14 | 6 | 23 | | 281 | 7,5 | 37 | 434819 | 412 | 7,5 | 55 | | 266 | 7,5 | 35 |
| DVC.3-25-18-20-SST-M6-55 | 25 | 20 | M6 | 18 | 6 | 27 | | 383 | 7,5 | 51 | 434831 | 1823 | 5 | 365 | | 277 | 7,5 | 37 |
| DVC.3-25-20-20-SST-M6-55 | 25 | 20 | M6 | 20 | 6 | 30 | | 694 | 5 | 139 | 434836 | 1889 | 5 | 378 | | 1214 | 5 | 243 |
| DVC.3-30-22-20-SST-M8-55 | 30 | 20 | M8 | 22 | 8 | 39 | ON REQUEST | 1214 | 5 | 243 | 434843 | 2745 | 5 | 549 | ON REQUEST | 1235 | 5 | 247 |
| DVC.3-30-18-25-SST-M8-55 | 30 | 25 | M8 | 18 | 8 | 42 | | 767 | 5 | 153 | 434841 | 1837 | 6,25 | 294 | | 1488 | 5 | 298 |
| DVC.3-35-25-34-SST-M8-55 | 35 | 34 | M8 | 25 | 8 | 53 | | 1488 | 6,25 | 238 | 434845 | 3306 | 8,5 | 389 | | 919 | 6,25 | 147 |
| DVC.3-40-30-25-SST-M8-55 | 40 | 25 | M8 | 30 | 8 | 64 | | 2871 | 8,5 | 338 | 434855 | 4624 | 6,25 | 740 | | 2141 | 8,5 | 252 |
| DVC.3-40-25-30-SST-M8-55 | 40 | 30 | M8 | 25 | 8 | 72 | | 2141 | 6,25 | 343 | 434853 | 3075 | 7,5 | 410 | | 3326 | 6,25 | 532 |
| DVC.3-40-33-30-SST-M8-55 | 40 | 30 | M8 | 33 | 8 | 80 | | 3326 | 7,5 | 444 | 434859 | 3317 | 7,5 | 442 | | 2219 | 7,5 | 296 |
| DVC.3-40-32-50-SST-M8-55 | 40 | 50 | M8 | 32 | 8 | 98 | | 2219 | 7,5 | 296 | 434857 | 1537 | 12,5 | 123 | | 2564 | 7,5 | 342 |
| DVC.3-40-20-48-SST-M8-55 | 40 | 48 | M8 | 20 | 8 | 86 | | 2564 | 12,5 | 205 | 434851 | 1808 | 12 | 151 | | 965 | 12,5 | 77 |
| DVC.3-50-42-30-SST-M10-55 | 50 | 30 | M10 | 42 | 10 | 125 | | 965 | 12 | 80 | 434856 | 3109 | 7,5 | 415 | | 1088 | 12 | 91 |
| DVC.3-55-44-45-SST-M10-55 | 55 | 45 | M10 | 44 | 10 | 150 | | 3326 | 7,5 | 444 | 434861 | 2702 | 11,25 | 240 | | 2085 | 7,5 | 278 |
| DVC.3-57-25-45-SST-M10-55 | 57 | 45 | M10 | 25 | 10 | 140 | 2085 | 11,25 | 185 | 434866 | 2416 | 11,25 | 215 | 1818 | 11,25 | 162 | | |
| DVC.3-60-49-60-SST-M10-55 | 60 | 60 | M10 | 49 | 10 | 310 | 1818 | 11,25 | 162 | 434871 | 5920 | 15 | 395 | 1673 | 11,25 | 149 | | |
| DVC.3-70-45-53-SST-M12-55 | 70 | 53 | M12 | 45 | 12 | 336 | 1673 | 15 | 112 | 434876 | 4419 | 13,25 | 333 | 5181 | 15 | 345 | | |
| DVC.3-72-64-33,5-SST-M12-55 | 72 | 33,5 | M12 | 64 | 12 | 342 | 5181 | 13,25 | 391 | 434881 | 10014 | 8,38 | 1196 | 2894 | 13,25 | 218 | | |
| DVC.3-75-60-40-SST-M12-55 | 75 | 40 | M12 | 60 | 12 | 360 | 2894 | 8,38 | 346 | 434886 | 9566 | 10 | 957 | 5708 | 8,38 | 682 | | |
| DVC.3-95-80-75-SST-M16-55 | 95 | 75 | M16 | 80 | 16 | 690 | 5708 | 10 | 571 | 434891 | 18156 | 18,75 | 968 | 4942 | 10 | 494 | | |

X-ON Electronics

Largest Supplier of Electrical and Electronic Components

Click to view similar products for [Electrical Enclosure Accessories](#) category:

Click to view products by [Elesa & Ganter](#) manufacturer:

Other Similar products are found below :

[60121-06-028 C-325 Black](#) [71884-04-028 CM3-100 Black](#) [71884-18-028 LH43-200 Black](#) [71884-24-028 LH75-200 Black](#) [71885-01-028 CM6-150 Black](#) [72459-02-028 DM-3 BLACK](#) [81501-01-000 XPL, 9VB Black](#) [82402-01 PT-8 ALUM](#) [1335GSKT3](#) [14101FP-PK](#) [CB-1263-BT](#) [1611512-4](#) [HB-11498](#) [RC-7775](#) [HM BLACK PANEL](#) [61033-01-000](#) [115123-01-508 CN-RL RS](#) [115124-01-508 CN-XRL XRS](#) [115119-01-000 CN-RL RS](#) [115123-01-000 CN-RL RS](#) [60121-04-028 C-275 Black](#) [60128-01-072](#) [60222-01-028 CM6-225 Black](#) [60272-01-028 CM3-150 Black](#) [60851-01-028 CM69-120 Black](#) [62291-502-000-KEU-10-BLK](#) [62452-01-000 HML-9VB, EB Black](#) [71884-25-028 LH89-130 Black](#) [AXX2POSTBRCKT](#) [FUPMESK](#) [71884-23-028 LH75-130 Black](#) [1317GSKTSC](#) [8G813V40389](#) [DVA.1-10-15-M4-10-70](#) [DVC.1-60-49-60-M10-28-55](#) [DVC.1-15-8,5-15-M4-10-40](#) [DVC.1-20-12-30-M6-18-40](#) [DVC.1-30-18-25-M8-20-40](#) [DVC.1-35-31-15-M8-20-40](#) [DVC.1-35-31-15-M8-20-70](#) [DVC.1-75-60-40-M12-37-70](#) [DVC.2-30-22-20-M8-20-55](#) [DVC.2-40-30-25-M8-23-55](#) [DVC.2-75-60-40-M12-37-55](#) [DVC.2-21-16-22-M6-18-40](#) [DVC.2-40-20-48-M8-23-40](#) [DVC.2-40-32-50-M8-23-40](#) [DVC.2-20-14-19-M6-18-70](#) [DVC.2-25-18-20-M6-18-70](#) [DVC.3-20-14-20-M6-40](#) [DVC.3-20-14-30-M6-40](#)