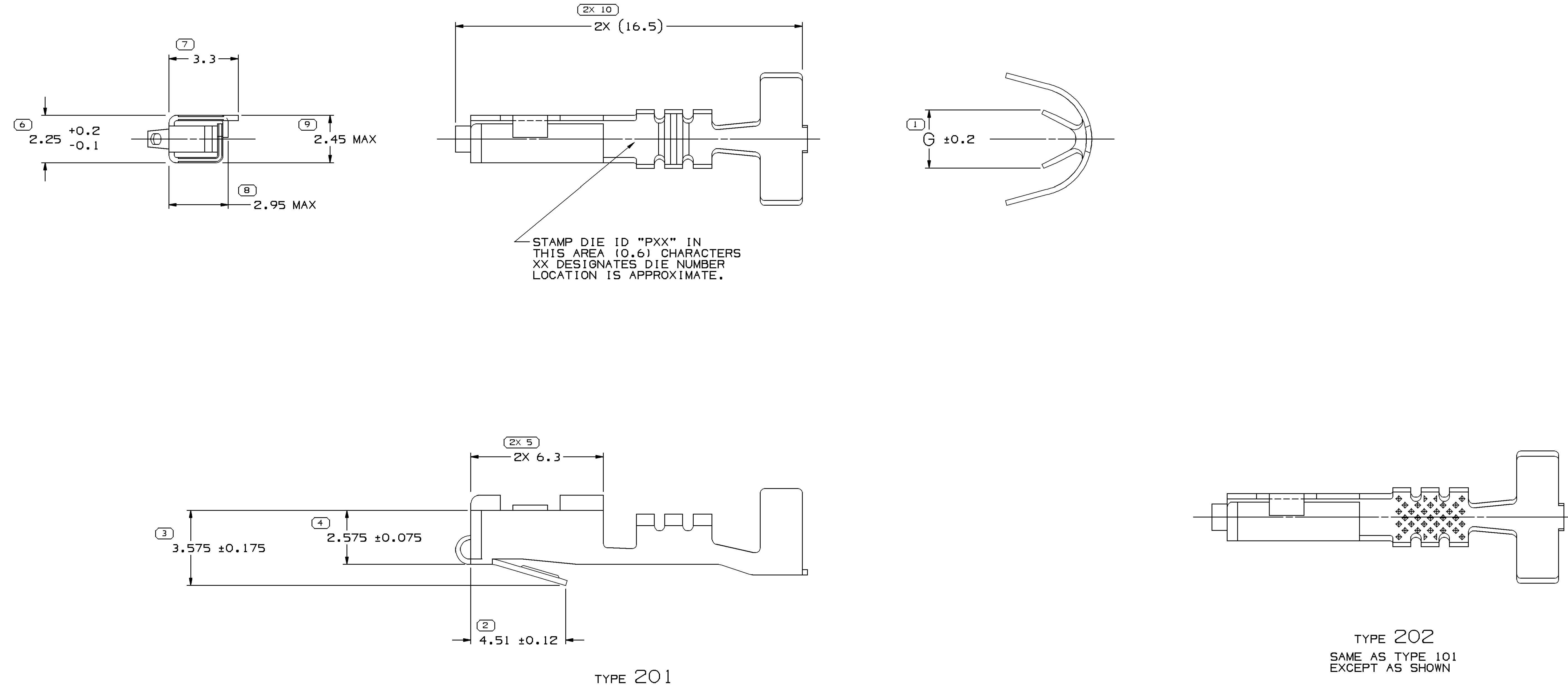


SYMBOL DEFINITION		MISSING SYMBOLS	
A DIMENSION WITHOUT AN INSPECTION REPORT SYMBOL DOES NOT REQUIRE INSPECTION. IT MAY BE CONTROLLED ON THE INDIVIDUAL COMPONENT DRAWING.	TOTAL NO OF INSPECTIONS REQUIRED	12	NO MISSING SYMBOL NUMBER
	LAST NO. USED	10	

DWG STATUS				REVISION HISTORY				AUTH		APVD	
DATE	STG	REV	N/P	CHG	ZONE			DR	APVD	1	2
23MY02	R	10	-	-		ALL PARTS - CLEARED REV COLUMN & REVISED MATERIAL SPECS: 12048074 - UPDATED PDM ATTRIBUTES		222820	HAM	HAM	DLB
22AU02	R	11	-	-		1536607B, 15326396, 15326225, 12160223, 12160222, 12084200 & 12048074 - REVISED MAT'L SIZE AND MAT'L SPEC		211578	ESF	EAR	GMC
06FE03	R	12	-	-		ALL ACTIVE PARTS- UPDATED PDM ATTRIBUTES		236348	MAC	MAC	JMP
140C03	R	13	-	-		1536607B - MAT'L SPEC WAS M3620 HCN4		245588	ADK	TLD	BB
17FE04	-	14	-	-		12048074, 12084200, 12092702, 12160222, 12160223, 15326225, 15326396 & 1536607B - T.O.D. UPDATED		250621	JS	JS	BB
190C04	R	15	-	-		ALL ACTIVE PARTS - ADDED TERMINAL ID NOTE		260108	RTV	JAA	KMW
09MR06	R	16	-	-		12084200 & 15326396 - UPDATED PDM ATTRIBUTES		276509	JBD	AUG	JES
24MY06	R	17	-	-		12092702 - OBSOLETE		280889	SLG	JAA	BD8
16JN06	R	18	-	-		ALL ACTIVE PARTS - PSD WAS #4		281799	JTZ	JVM	BD8



NOTES:

- UNLESS OTHERWISE SPECIFIED AND/OR INDICATED: DIMENSIONS ARE TO FACE OF VIEW SHOWN AND AUTOMATICALLY ROUNDED BY COMPUTER FOR INSPECTION. (SEE MATH MODEL FOR PRECISE DIMENSION) FOR ALL OTHER DIMENSIONS NOT SHOWN BUT REQUIRED FOR TOOL BUILD, SEE MATH MODEL FOR PRECISE TOOL PATH DATA.
- RECOMMENDED MATING BLADE - WIDTH : 1.64/1.4 THICKNESS : 0.86/0.79 LENGTH : 7.1/6.9
- "PXX" INDICATES "P" PLUS LAST TWO DIGITS OF MAKE SERIES NUMBER (P01, P02, P03, ETC).
- DO NOT PROBE, TEST OR OTHERWISE CONTACT THE INTERIOR REGION (THE SPRING OR ANY MOVING PART) OF THIS TERMINAL. SEVERE DAMAGE CAN OCCUR, COMPROMISING THE PERFORMANCE OF THE ELECTRICAL INTERFACE.

PART NO	REV	N/P	STATUS	MAT'L SIZE	MAT'L SPEC	PART NO	REV	N/P	STATUS	MAT'L SIZE	MAT'L SPEC
				0.254 X 29.8	M3620 HN4 654 SLC BRZ 1/2 HD GOLD STR					1-0.8-0.5	
				0.254 X 29.8	M3620 HN4 654 SLC BRZ 1/2 HD GOLD STR					0.5-0.35	
				0.254 X 29.8	M3640929 17410 BECU 1/2 HT SN PLTD					1-0.8-0.5	
				0.254 X 29.8	M3628929 170 BECU 1/4 HM AG/NI PLTD					1-0.8	
				0.254 X 29.8	M3628929 170 BECU 1/4 HM AG/NI PLTD					0.5-0.35	
				0.254 X 29.8	M3606929 654 SLC BRZ 1/2 HD SN PLTD					0.5-0.35	
				0.254 X 30.96	P3604ABP 654 SLC BRZ 1/2 HD SN PLTD					0.35	
				0.254 X 29.8	M3606929 654 SLC BRZ 1/2 HD SN PLTD					1-0.8-0.5	

PART DRAWING	
STYLE	
VOLUME 10/11	DISTR CODE
	D
UNLESS OTHERWISE SPECIFIED	
THIS DOCUMENT IS IN ACCORDANCE WITH ASME Y14.9M-1994 AS MODIFIED BY THE MDCS DIMENSIONING AND TOLERANCING MANUAL (REV. 05/2005) AND RELATED DWTM APPL. REFS. FILE #UPR007 FROM AT INC. DOES NOT APPLY. THE RELATIONSHIP BETWEEN FEATURES IS ESTABLISHED BY ORIENTATION OR LOCATION TOLERANCES. SEPARATE POSITION CALLOUTS MAY BE SHOWN SEPARATELY, REGARDLESS OF DATUM REFERENCE.	
ALL DIMENSIONS ARE IN MILLIMETERS	
DIMENSIONS ENCLOSED IN () INDICATE REFERENCE DIMENSIONS AND NO TOLERANCE LIMITS ARE ESTABLISHED	
DIMENSIONAL RANGE (MM)	CHART D
FROM TO	>12
TOLERANCE UNLESS OTHERWISE SPECIFIED	
+0.1	+0.2
ANGULAR TOLERANCE 22°	
THIRD ANGLE PROJECTION	DO NOT SCALE
USE MATH DATA	UNGRAPHS

DELPHI
DELPHI PACKARD ELECTRIC SYSTEMS
WVREN, OH

DR	DATE
APVD1 G. LIMON A.	26AU96
APVD2 FCO, KOPCA	26AU96
APVD3 T. DUTTLE	220C96
APVD4	
APVD5	

SUBSTANCES OF CONCERN AND RECYCLED CONTENT PER DELPHI 1094001

MATERIALS SEE CHART

DRAWING NAME
TAXI TERM F/M/P 150 TANG

DRAWING NUMBER
12047884

SIZE	SCALE	FRAME NO	SHEET NO	REV	N/P
A0	10:1	11	1	2	OF 1

STG REV N/P R 18 -