

Totalizers mechanic

Stroke, meter and revolution counters

Display 5 digits, manual reset by lever

H 310, M 310, U 310



H 310 - Stroke counter



M 310 - Meter counter



U 310 - Revolution counter

Features

- Stroke, meter and revolution counters
- Adding and/or subtracting
- Display 5-digits
- Reset by lever

Technical data - mechanical design

| | |
|---------------------------|--|
| Number of digits | 5 digits |
| Digit height | 4.5 mm |
| Reset | Manual by reset lever. Do not let snap or make jerky movements. |
| Drive shaft | Both sides, $\varnothing 4$ mm |
| Ambient temperature | 0...+60 °C |
| Housing type | Surface mount housing with mounting plate |
| Housing colour | Grey |
| Dimensions W x H x L | 69 x 48 x 28 mm |
| Dimensions mounting plate | 80 x 48 mm |
| Mounting | Base plate, 6 long mounting holes |
| Weight approx. | 130 g |
| Materials | Housing: Hostaform POM, grey Base plate: steel zinc-coated |

Totalizers mechanic

Stroke, meter and revolution counters

Display 5 digits, manual reset by lever

H 310, M 310, U 310

Technical data - mechanical design

H 310

| | |
|------------------|--|
| Function | Stroke counter |
| Display | White numbers on black |
| Count mode | Adding in a stroke direction to be indicated. 1 stroke = 1 count |
| Stroke | >38° to <60° |
| Stroke lever | To be positioned on shaft at will. Stroke lever relocates automatically to start position. |
| Stroke frequency | ≤500 strokes/min |
| Measuring range | 99 999 |

M 310

| | |
|--------------------|---|
| Function | Meter counter |
| Display | White numbers on black Decimal digits in red |
| Count mode | Adding in a rotational direction to be indicated, subtracting in reverse direction. 5 revs. = 10 counts |
| Measuring speed | <200 m/min (measuring wheel) |
| Measuring accuracy | 1 dm |
| Measuring range | 9999.9 m |

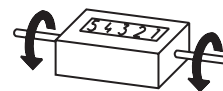
U 310

| | |
|-----------------|--|
| Function | Revolution counter |
| Display | White numbers on black |
| Count mode | Adding in a rotational direction to be indicated, subtracting in reverse direction. 1 rev. = 1 count |
| Operating speed | ≤3000 rpm |
| Measuring range | 99 999 |

Direction of strokes and rotation



Away from user
Sense of rotation or
stroke direction I



Toward user
Sense of rotation or
stroke direction II

Accessories

Measuring wheels for M 310

| | |
|-----------|---|
| MR211.04A | Circumf. 20 cm, knurled aluminium |
| MR241.04D | Circumf. 20 cm, smooth Hytrel TPE-E |
| MR261.04A | Circumf. 20 cm, knopped rubber NBR Nitril |
| MR291.04D | Circumf. 20 cm, grooved Hytrel TPE-E |

Totalizers mechanic

Stroke, meter and revolution counters

Display 5 digits, manual reset by lever

H 310, M 310, U 310

Part number

Stroke counter

H 310.

| | | | |
|-----|---|----|--|
| 010 | A | 01 | |
|-----|---|----|--|

| | | | | |
|--|--|--|--|--|
| | | | | <u>Display / direction of stroke</u> A 5 digits 99 999 / I B 5 digits 99 999 / II <u>Count mode / drive</u> 01 1 stroke = 1 digit / drive shaft on both sides <u>Housing</u> A Surface mount housing, grey <u>Reset</u> 010 With reset lever |
|--|--|--|--|--|

Meter counter

M 310.

| | | | |
|-----|---|----|--|
| 010 | A | 06 | |
|-----|---|----|--|

| | | | | |
|--|--|--|--|---|
| | | | | <u>Display / direction of rotation</u> C 5 digits 9999.9 / I D 5 digits 9999.9 / II <u>Count mode / drive</u> 06 5 revolutions = 10 digits = 1.0 m / drive shaft on both sides <u>Housing</u> A Surface mount housing, grey <u>Reset</u> 010 With reset lever |
|--|--|--|--|---|

Revolution counter

U 310.

| | | | |
|-----|---|----|--|
| 010 | A | 01 | |
|-----|---|----|--|

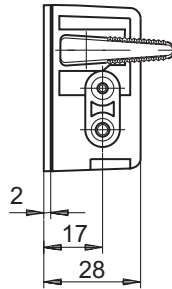
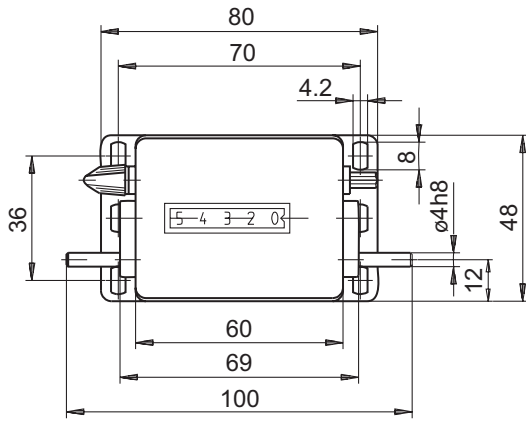
| | | | | |
|--|--|--|--|--|
| | | | | <u>Display / direction of rotation</u> A 5 digits 99 999 / I B 5 digits 99 999 / II <u>Count mode / drive</u> 01 1 revolution = 1 digit / drive shaft on both sides <u>Housing</u> A Surface mount housing, grey <u>Reset</u> 010 With reset lever |
|--|--|--|--|--|

Totalizers mechanic

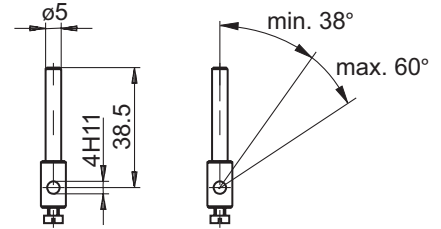
Stroke, meter and revolution counters
Display 5 digits, manual reset by lever

H 310, M 310, U 310

Dimensions



Stroke lever and stroke



X-ON Electronics

Largest Supplier of Electrical and Electronic Components

Click to view similar products for [Counters & Tachometers](#) category:

Click to view products by [Baumer](#) manufacturer:

Other Similar products are found below :

[LC2H-FE-2K-N](#) [H7CN-XLN DC12-48](#) [LC24-F-N](#) [H7CXAWD1NDC1224AC24](#) [H7ER-NV1-H](#) [H7CX-A114S-N AC100-240](#) [H7CX-AWSD-N-DC12-24](#) [H7CX-AU-N AC100-240](#) [GPMZC-SET](#) [CX6S-1P2F](#) [CX6S-1P4F](#) [CX6S-2P2F](#) [CX6S-2P4F](#) [H127.010A01H](#) [H5KLR-11 100-240V AC/DC](#) [H7CX-AUD1-N](#) [H7CX-AW-N](#) [3.550.401.075](#) [3.550.401.351](#) [LC2H-C-2K-N](#) [LC2H-C-30-N](#) [LC2H-F-DL-2KK](#) [LC4H-R4-AC240VS](#) [LC4H-R6-AC240V](#) [1.150.510.012.550](#) [1.150.510.054.550](#) [1.150.510.056.550](#) [6.520.012.300](#) [6.560.010.300](#) [SLE-73-1400-1-4-01](#) [SLIK-94-1521-1-3-001](#) [SLN-94-1421-1-3](#) [SPI-73-1411-1-3-011](#) [CT6S-1P4](#) [Y-50](#) [LC4H-R4-AC24V](#) [LC4H-R4-DC24V](#) [CT6S-2P4](#) [LC2H-F-DL-2KK-B](#) [LC2H-FE-DL-2KK-B](#) [LC2H-FE-FV-30](#) [H127.010A01G](#) [H5KLR-8B 12-48 AC/DC](#) [H7CX-A11-N](#) [H7CX-AD-N](#) [H7CX-AU-N](#) [H7ER-NV1](#) [H8DA 12-48V AC/DC](#) [87622062](#) [99776901](#)