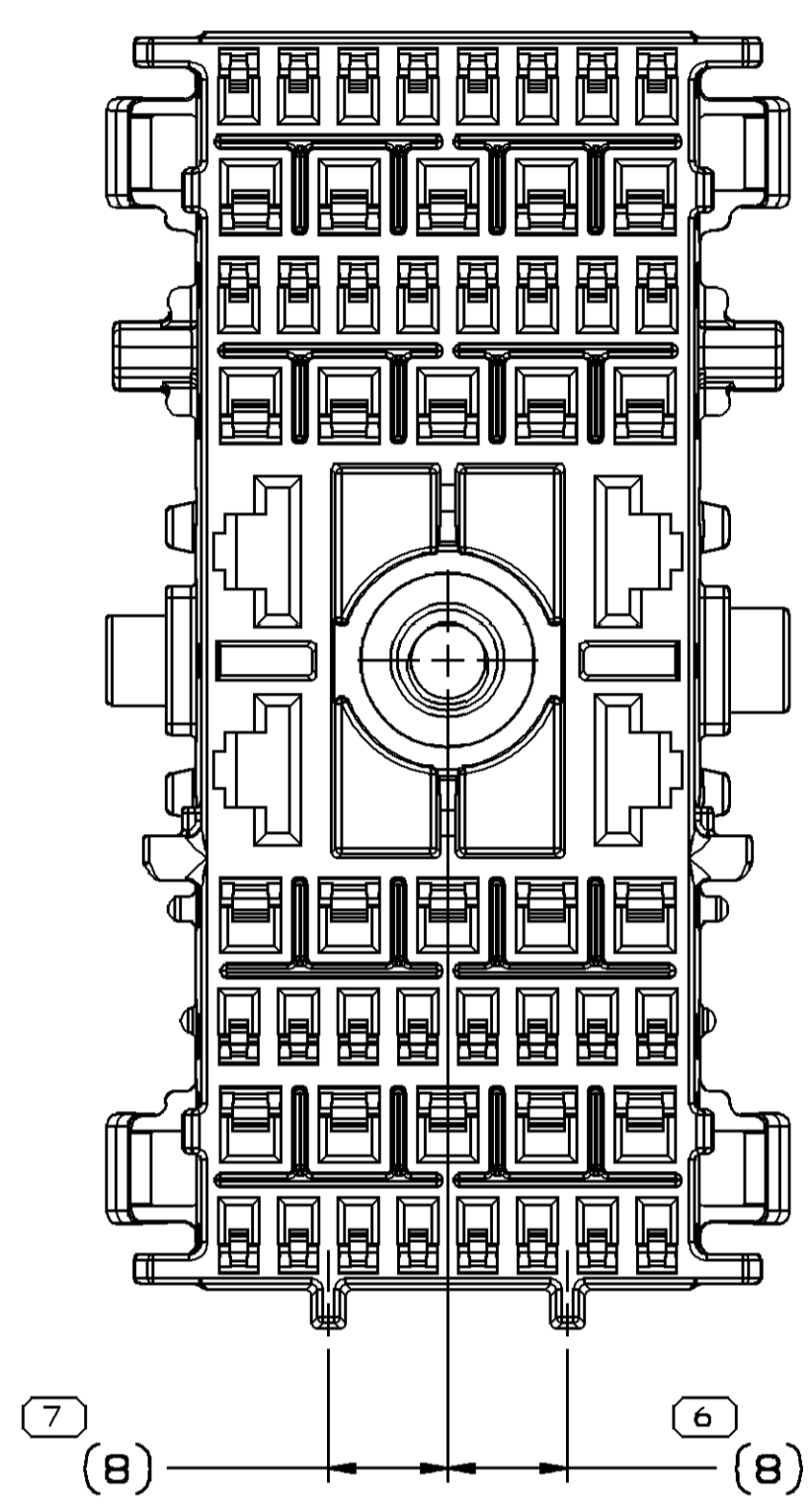
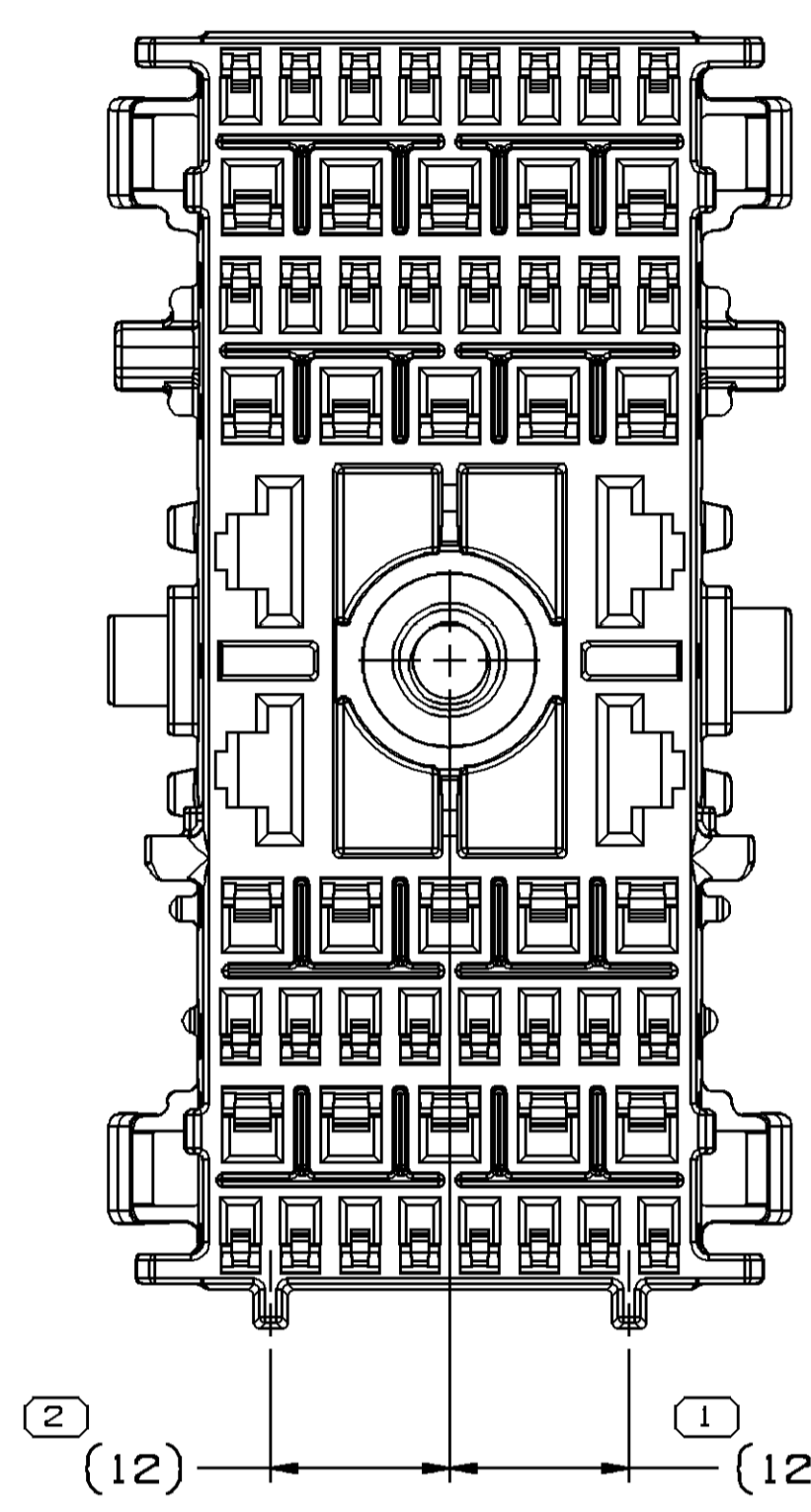


SYMBOL DEFINITION		MISSING SYMBOLS	
A DIMENSION WITHOUT AN INSPECTION REPORT SYMBOL () DOES NOT REQUIRE INSPECTION. IT MAY BE CONTROLLED ON THE INDIVIDUAL COMPONENT DRAWING.	TOTAL NO OF INSPECTIONS REQUIRED	7	NO MISSING SYMBOL NUMBER
	LAST NO. USED	7	

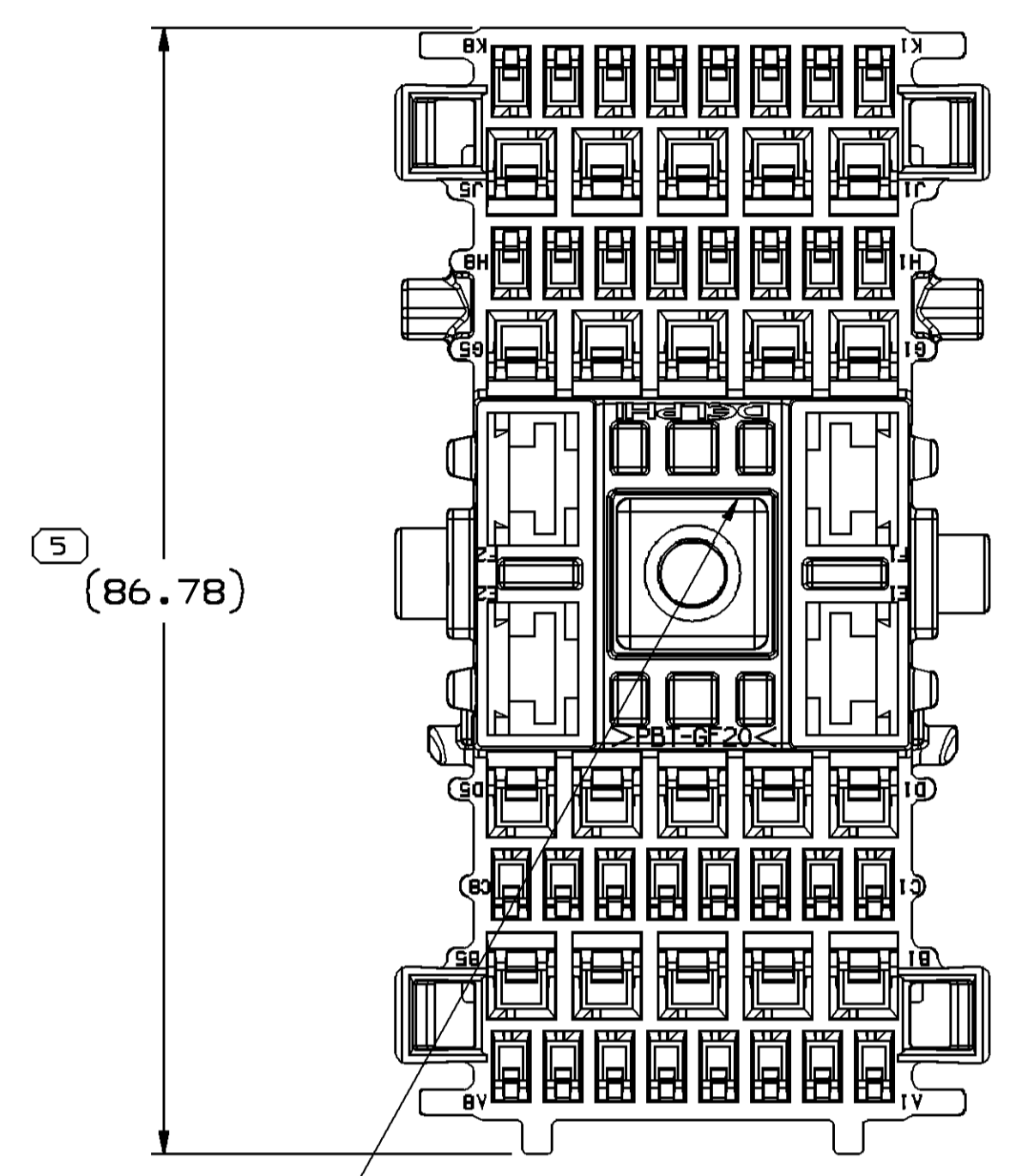
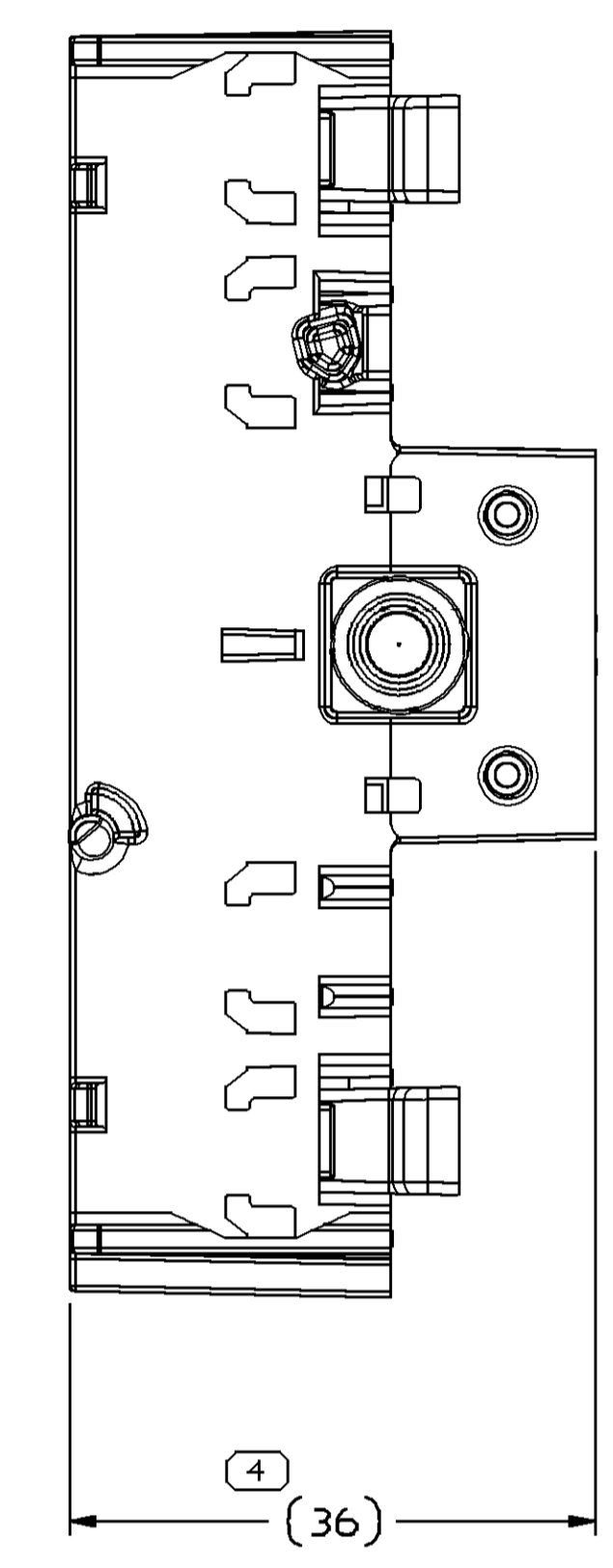
DWS STATUS				REVISION HISTORY				AUTH		DR		APVD	
DATE	STG	REV	N/P	CHG	ZONE								
05DE03	-	01	-	-		ALL PARTS - RELEASED				248626	AKJ	AKJ	ABT
13AU04	R	02	-	-		ALL PARTS - UPDATED GRAPHICS				256856	EGR	EGR	SD
13DE12	R	03	-	-		UPDATED WIRE DRESS COVER PART NUMBER: 13552251 WAS 15486309 (OBSOLETE).				806773	LJN	EAT	RR



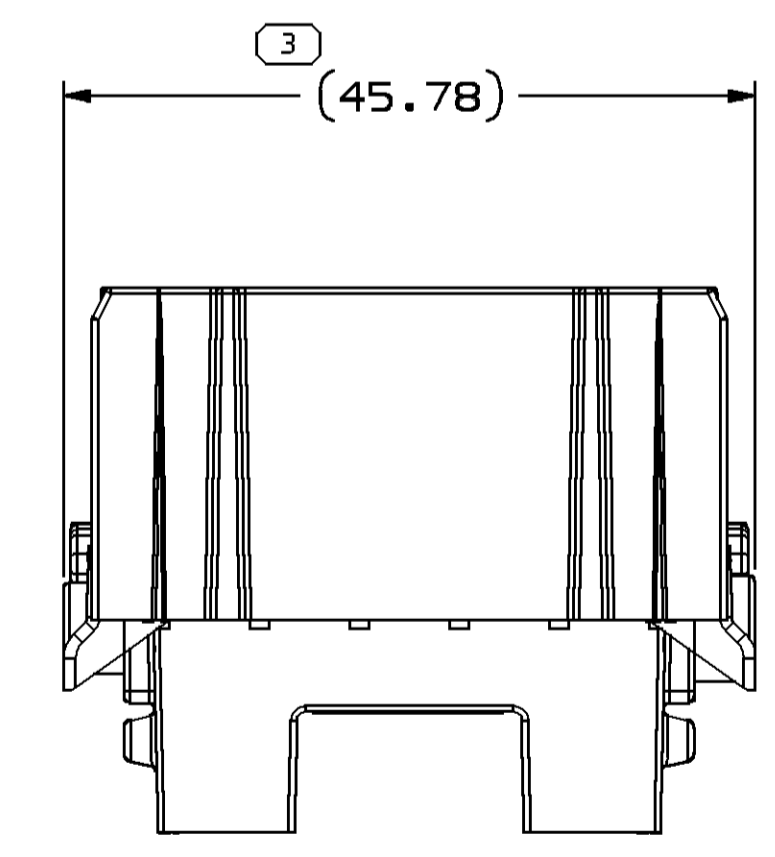
TYPE 102
SAME AS TYPE 101
EXCEPT AS SHOWN



TYPE 101

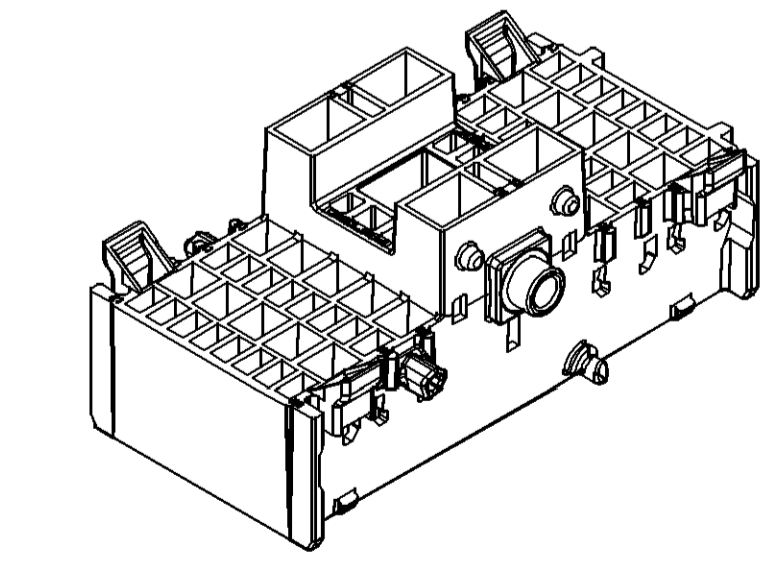


INSERT SEE CHART



NOTES

- UNLESS OTHERWISE SPECIFIED AND/OR INDICATED: DIMENSIONS ARE TO FACE OF VIEW SHOWN AND AUTOMATICALLY ROUNDED BY COMPUTER FOR INSPECTION (SEE MATH MODEL FOR PRECISE DIMENSIONS). FOR ALL OTHER DIMENSIONS NOT SHOWN BUT REQUIRED FOR TOOL BUILD, SEE MATH MODEL FOR PRECISE TOOL PATH DATA.
- SEALING CODE 0 - UNSEALED
- THIS PART ACCEPTS THE FOLLOWING COMPONENTS OR EQUIVALENT: CAVITIES A1 TO A8, C1 TO C8, H1 TO H8 & K1 TO K8 TO ACCEPT 12191811 TERMINAL. MAX INSULATION CRIMP MUST BE LESS THAN XX HIGH AND XX WIDE. CAVITIES B1 TO B5, D1 TO D5, G1 TO G5 & J1 TO J5 TO ACCEPT 15304711 TERMINAL. MAX INSULATION CRIMP MUST BE LESS THAN X HIGH AND X WIDE. CAVITIES E1, E2, F1 & F2 TO ACCEPT 12065915 TERMINAL. MAX INSULATION CRIMP MUST BE LESS THAN X HIGH AND X WIDE. SECONDARY TERMINAL LOCK 15467562. WIRE DRESS COVER 13552251.
- ASSEMBLY NUT INSERT PUSH OUT FORCE IS 800 N MINIMUM. ASSEMBLY NUT SHALL NOT RATTLE AFTER CRIMP PROCESS



TYPE 101

PART NO	STG	REV	N/P	TYPE	CONNECTOR	INSERT
15477823	R	02	-	102	15467561	15410323
15477822	R	02	-	101	15467560	15410323

DIMENSIONAL RANGE (MM)	CHART SET	THIRD ANGLE PROJECTION	DO NOT SCALE
FROM > 0	> 20	> 30	> 70
TO > 20	> 30	> 70	> 100
	100	150	200
	200	250	300
	300	400	
TOLERANCE UNLESS OTHERWISE SPECIFIED		USE MATH DATA	
±0.15 ±0.2 ±0.3 ±0.4 ±0.5 ±0.6 ±0.8 ±1 ±1.2		ANGULAR TOLERANCE ±2°	

DELPHI
DELPHI PACKARD ELECTRICAL/ELECTRONIC ARCHITECTURE
WARREN, OH
COPYRIGHT 2012 DELPHI CORPORATION AND/OR ITS AFFILIATES. ALL RIGHTS RESERVED.
THIS DRAWING IS THE PROPERTY OF DELPHI CORPORATION AND CONTAINS DELPHI CONFIDENTIAL INFORMATION. THE REPRODUCTION, DISTRIBUTION AND UTILIZATION OF THIS DOCUMENT OR ITS RELATED CAD DATA, AS WELL AS COMMUNICATION OF ANY CONTENT TO OTHERS, WITHOUT EXPRESS AUTHORIZATION, IS PROHIBITED.

DR	DATE
APV01 ANAND JAGANATHAN	05DE03
APV02 ANAND JAGANATHAN	05DE03
APV03 ALAN TOOT	05DE03
APV04	

ALL DIMENSIONS ARE IN MILLIMETERS

DRAWING NAME
TAXI ASM CONN F GT 150 280 M/P 800

DRAWING NUMBER
15477821

SHEET NO	STG	REV	N/P
1 OF 1	R	03	-