

## Pliers & Cutters (Swiss Made)



### 1. Features

- High quality ball bearing steel
- **63 - 65 Rockwell Hardness (HRC):** Pyrometer controlled inductive hardening
- All cutters available with three types of cutting blades:
  - **SEMI-FLUSH**, for soft and hard wire.
  - **FLUSH**, for very precise cutting of soft wire.
  - **FULL-FLUSH**, for a perfect cutting of soft wire.



- **2-Component ESD Ergonomic handles**, soft comfortable gripping surface, hard plastic core
- Dual leaf **springs** in blue steel.
- **Matched bearing rings** in order to minimize metal-metal contact and friction.
- **Lap joint with screw** in order to achieve a high level of strength and precision. The nut is made of hardened alloy steel in order to resist high cutting load. The screw is fine-pitched for perfect joint adjustment.

## 2. The cutters

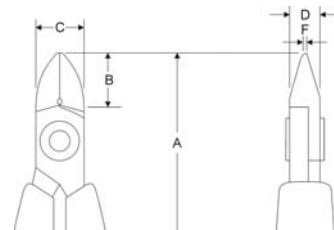
- **Oval**

*Micro*: very slim, relieved to maximize accessibility when limited space

*Small*: robust, slim shape, an optimum balance between durability and accessibility.

*Big*: very strong and durable, for intensive cutting operations.

Product Code	A [mm]	B [mm]	C [mm]	D [mm]	F [mm]	Cutting edges	Cutting capacity Cu-wire [mm]
5130	121	8	8	6.4	0.5	Semi-flush	0.2-1.2
5131	121	8	8	6.4	0.5	Flush	0.1-1.2
5132	121	8	8	6.4	0.5	Full-flush	0.1-0.8
5140	123	10	10	6.4	0.5	Semi-flush	0.2-1.2
5141	123	10	10	6.4	0.5	Flush	0.1-1.2
5142	123	10	10	6.4	0.5	Full-flush	0.1-1.0
5150	125	12.5	12.5	6.4	0.5	Semi-flush	0.3-1.6
5151	125	12.5	12.5	6.4	0.5	Flush	0.2-1.6
5152	125	12.5	12.5	6.4	0.5	Full-flush	0.2-1.2



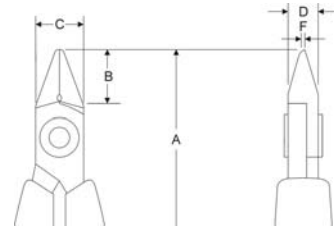
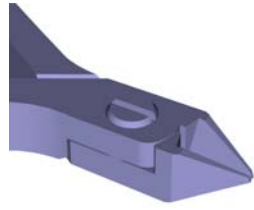
- **Tapered**

*Micro*: pointed head shape, very slim, relieved to maximize accessibility when limited space

*Small*: pointed head shape, slim an optimum balance between durability and accessibility.

*Big*: Robust and versatile. Pointed head shape to increase accessibility when limited space.

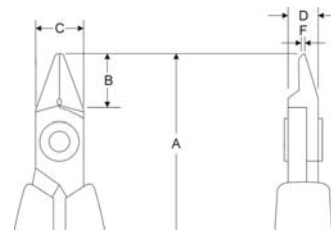
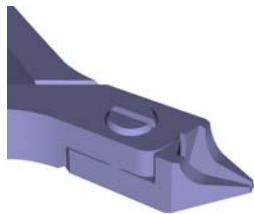
Product Code	A [mm]	B [mm]	C [mm]	D [mm]	F [mm]	Cutting edges	Cutting capacity Cu-wire [mm]
5330	121	8	8	6.4	0.5	Semi-flush	0.2-1.2
5331	121	8	8	6.4	0.5	Flush	0.1-1.2
5332	121	8	8	6.4	0.5	Full-flush	0.1-0.8
5340	123	10	10	6.4	0.5	Semi-flush	0.2-1.2
5341	123	10	10	6.4	0.5	Flush	0.1-1.2
5342	123	10	10	6.4	0.5	Full-flush	0.1-1.0
5350	125	12.5	12.5	6.4	0.5	Semi-flush	0.3-1.6
5351	125	12.5	12.5	6.4	0.5	Flush	0.2-1.6
5352	125	12.5	12.5	6.4	0.5	Full-flush	0.2-1.2



- **Tapered and relieved**

Pointed head shape and deep relief for a very low profile to maximize accessibility when limited space.

Product Code	A [mm]	B [mm]	C [mm]	D [mm]	F [mm]	Cutting edges	Cutting capacity Cu-wire [mm]
<b>5540</b>	123	10	10	6.4	0.5	Semi-flush	0.2-1.2
<b>5541</b>	123	10	10	6.4	0.5	Flush	0.1-1.2
<b>5542</b>	123	10	10	6.4	0.5	Full-flush	0.1-1.0

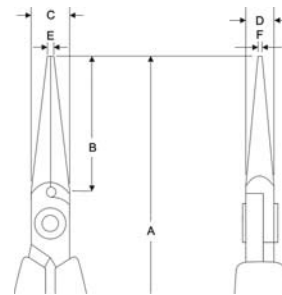


### 3. The Pliers

- **Snipe nose long**

Commonly used in electronic assembly and rework as well as in fine jewellery and beading work. Pliers nose have flat-faced inner jaws.

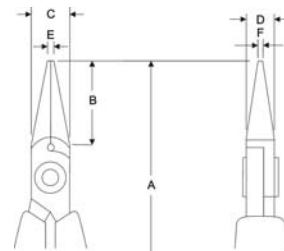
Product Code	A [mm]	B [mm]	C [mm]	D [mm]	E [mm]	F [mm]	Jaw shape
<b>6023</b>	143	30	10	6.4	1.2	1.0	smooth
<b>6024</b>	143	30	10	6.4	1.2	1.0	serrated



- **Snipe nose**

Commonly used in electronic assembly and rework as well as in fine jewellery and beading work. Long bent nose pliers have flat-faced inner jaws.

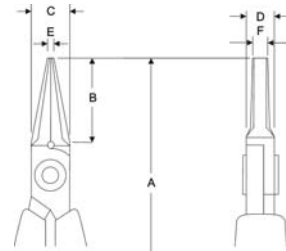
Product Code	A [mm]	B [mm]	C [mm]	D [mm]	E [mm]	F [mm]	Jaw shape
<b>6021</b>	133	20	10	6.4	1.2	1.0	smooth
<b>6022</b>	133	20	10	6.4	1.2	1.0	serrated



- **Flat nose**

Flat nose pliers feature a very fine tip, smooth jaws and inner edges.

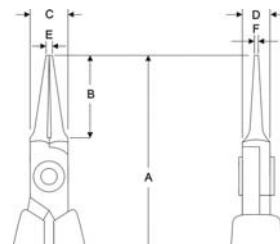
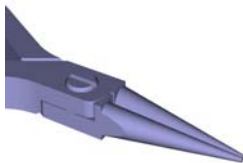
Product Code	A [mm]	B [mm]	C [mm]	D [mm]	E [mm]	F [mm]	Jaw shape
<b>6011</b>	133	20	10	6.4	1.2	4.0	smooth



- **Round nose**

Round nose pliers have jaws formed by two long cones. A round nose pliers is generally used both to clamp and to form loops on leads or wire. The long jaws also provide increased access.

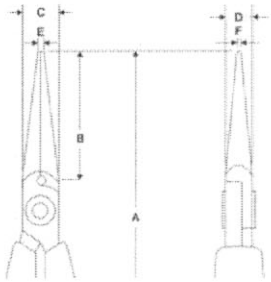
Product Code	A [mm]	B [mm]	C [mm]	D [mm]	E [mm]	F [mm]	Jaw shape
<b>6041</b>	133	20	10	6.4	2.0	∅ 1.0	Very fine



Commonly used in electronic assembly and rework as well as in fine jewellery and beading work. Pliers nose have flat-faced inner jaws.

The thin profile increases tool access. The cone shape can be used for precision loop forming of leads or wire. Needle nose pliers feature very fine tips. Also the inner edges of the jaw are "eased" to protect leads or wire during forming.

Product Code	A [mm]	B [mm]	C [mm]	D [mm]	E [mm]	F [mm]	Jaw shape
<b>6025</b>	146	33	10	6.4	1.2	0.8	smooth



## X-ON Electronics

Largest Supplier of Electrical and Electronic Components

*Click to view similar products for [Pliers & Tweezers](#) category:*

*Click to view products by [Ideal-Tek](#) manufacturer:*

Other Similar products are found below :

[M83723/71R22197 L/C](#) [32750](#) [G77015](#) [0037](#) [282668001](#) [2890-180](#) [76C](#) [RX 8130](#) [RX 8145](#) [RX 8146](#) [RX 8152](#) [DRP10N](#) [0036](#) [64 11 115](#)  
[0020](#) [00 19 55 S4](#) [00 19 72 V01](#) [00 20 72 V06](#) [0030](#) [30 11 140](#) [30 21 160](#) [30 25 160](#) [72 01 160](#) [102ACA](#) [72 11 160](#) [HLCP180](#) [72 21 160](#)  
[7224](#) [32954](#) [33507](#) [33521](#) [3400](#) [34 12 130](#) [34688](#) [34689](#) [34690](#) [34700](#) [34729](#) [34743](#) [35 22 115 ESD](#) [3-653-15](#) [3-657-15](#) [3-669-15](#) [3-672-](#)  
[15](#) [3-675-15](#) [37450](#) [74 06 180](#) [74 06 200](#) [38189](#) [431013](#)