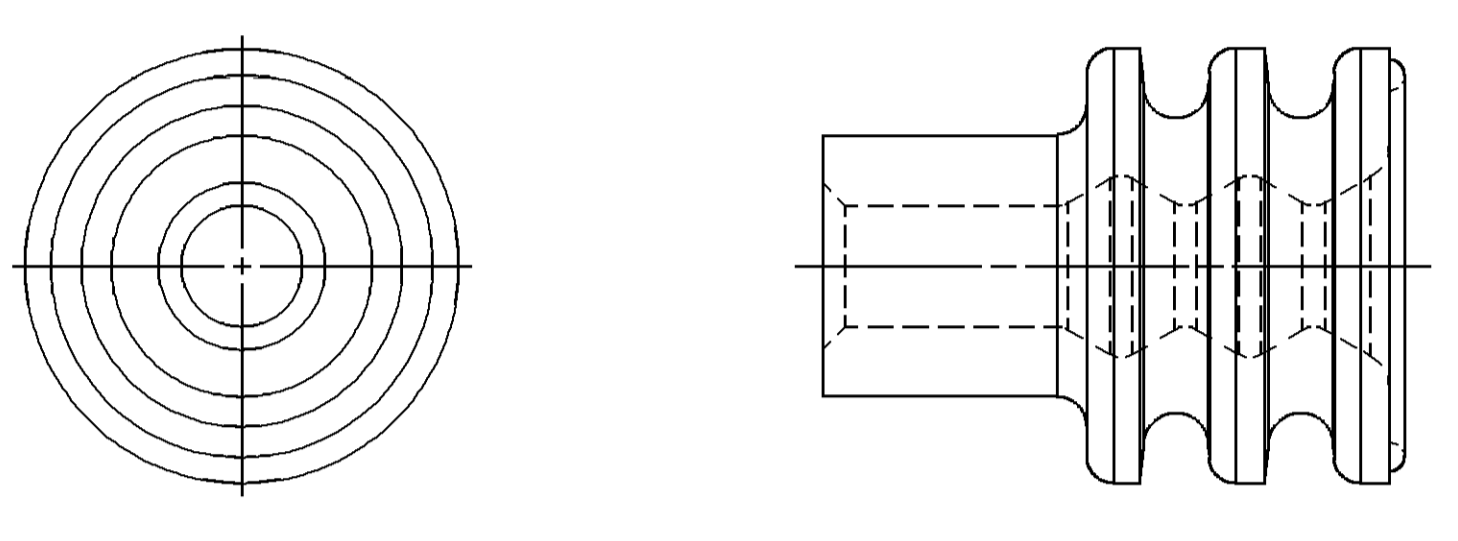
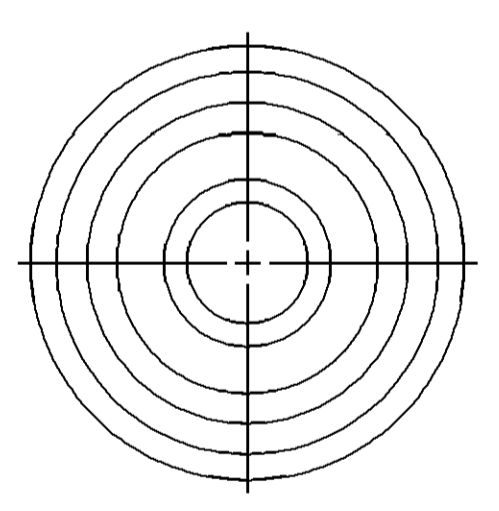
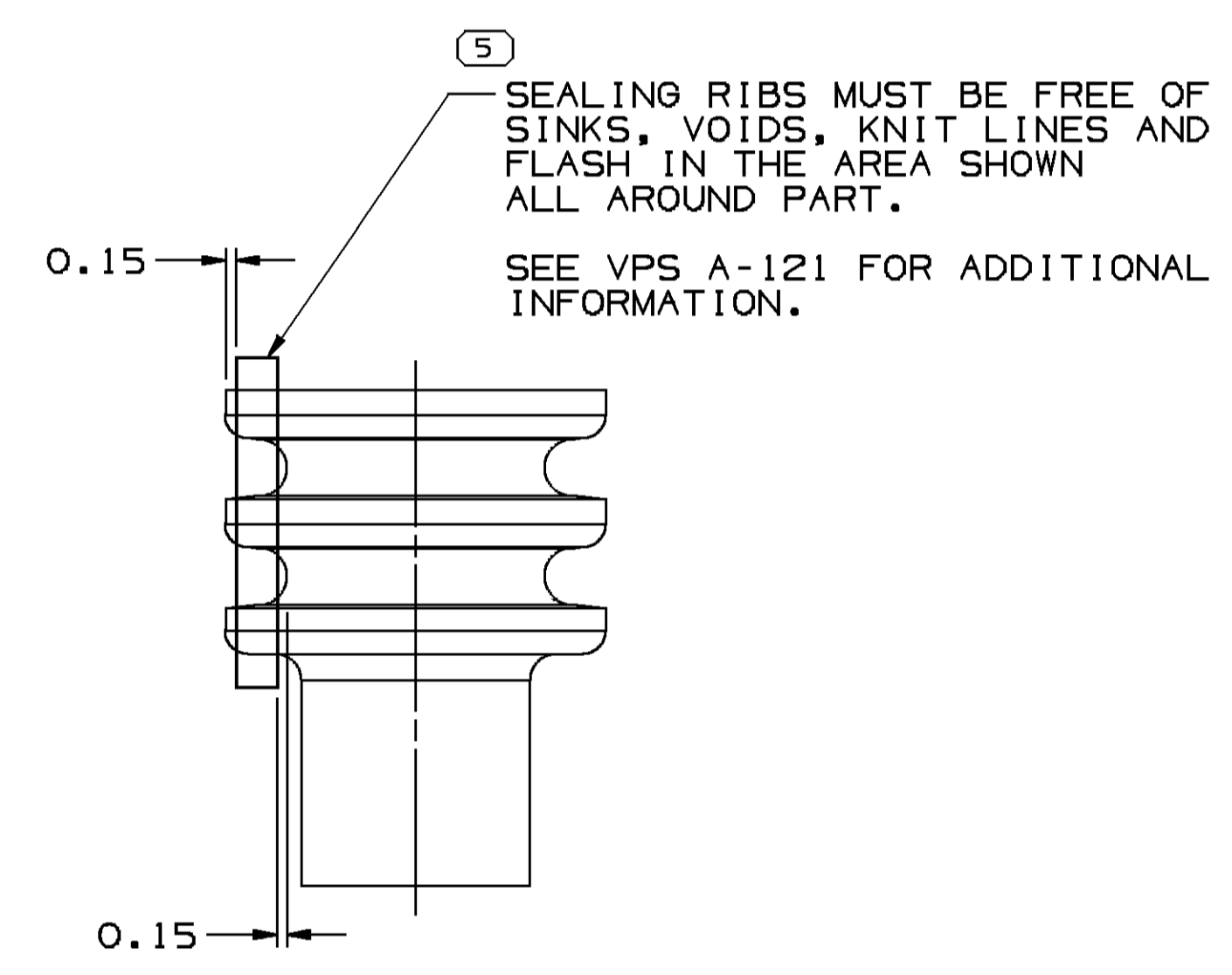


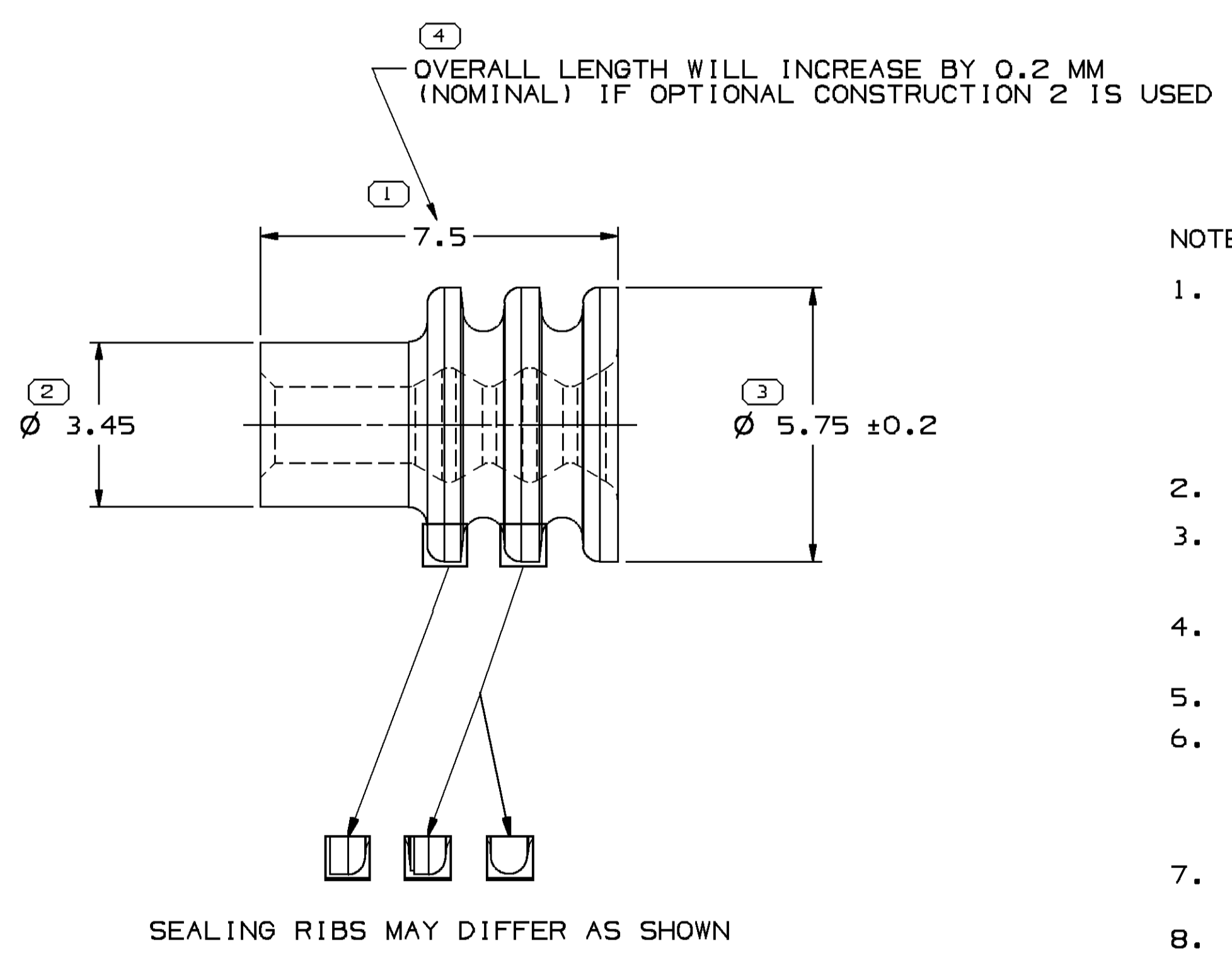
OPTIONAL CONSTRUCTION 1  
(ANTI-STICK RING)



OPTIONAL CONSTRUCTION 2  
THIS IS THE PREFERRED CONSTRUCTION FOR NEW  
TOOL BUILDS  
(ANTI-STICK RING)

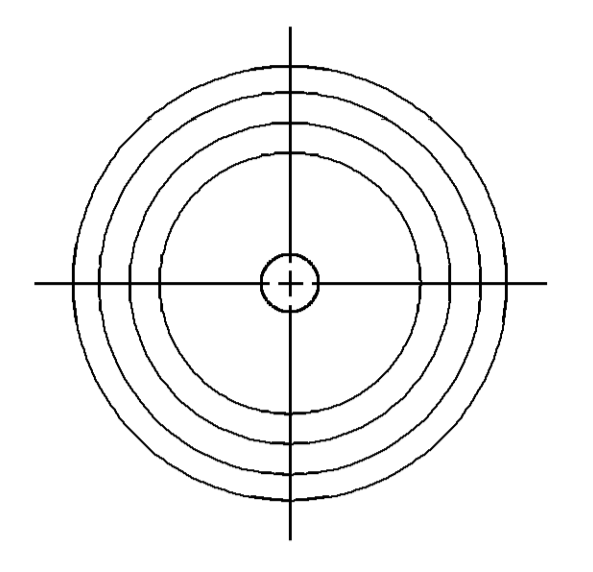


TYPE 401

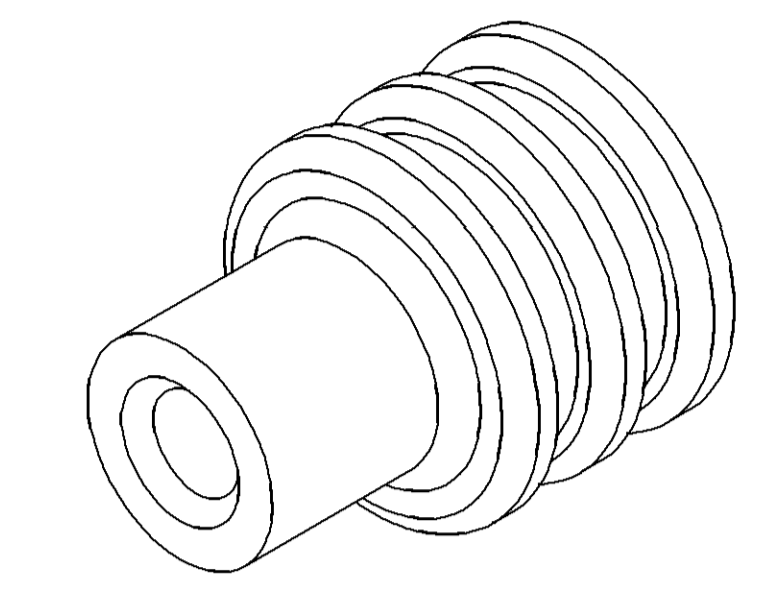
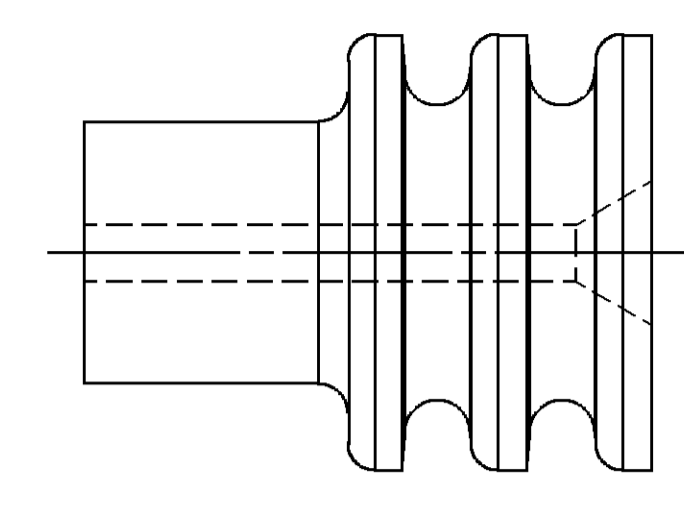


SEALING RIBS MAY DIFFER AS SHOWN

SYMBOL DEFINITION		MISSING SYMBOLS	
A DIMENSION WITHOUT AN INSPECTION REPORT SYMBOL DOES NOT REQUIRE INSPECTION. IT MAY BE CONTROLLED ON THE INDIVIDUAL COMPONENT DRAWING.	TOTAL NO OF INSPECTIONS REQUIRED	NO MISSING SYMBOL NUMBER	
	5		
LAST NO. USED	5		



TYPE 402  
SAME AS TYPE 401  
EXCEPT AS SHOWN



DATE	STG	REV	N/P	CHG	ZONE	REVISION HISTORY	AUTH	DR	AP/VD
03DE99	R	001	-	-	-	ALL PARTS - REDRAWN TO PD	990009	EOV	CMP/RH
03DE99	R	002	-	-	-	15324973-76 & 15324979 - RELEASED	990005	EOV	CMP/RH
17MY00	R	003	-	-	-	15393249 - RELEASED	000005	MAC	MAC/MM
07N000	R	004	-	-	-	15324973-76 & 15324979 - REVISED	202978	JLZ	EAR/JR
07N000	R	005	-	-	-	15393249 - REVISED MYLAR & CABLE SEAL ASM COLUMN	204413	EAR	EAR/JR
19JA01	R	006	-	-	-	UPDATED PDM ATTRIBUTES	205150	JLZ	JLZ/JR
09JA01	R	007	-	-	-	15393249 - PM009216 WAS PM002196 AND "Ø" DIM WAS 5.75 +/- 0.15	205774	MAC	MAC/TP
29MR01	R	008	-	-	-	15393249 - MAT'L SPEC WAS PM009216	207669	FMH	FMH/MLP
06N001	R	009	-	-	-	12048086 - UPDATED PDM ATTRIBUTES	215063	MRL	MRL/DLB
10FE03	R	10	-	-	-	15324974 AND 15324976 - UPDATED PDM ATTRIBUTES	236300	BRB	BRB/MLP
05AP04	R	11	-	-	-	12052925, 12052924, 15393249, 15324979, 15324976, 15324975, 15324973, 12186769, 12129926, 12110213, 12089678, 12089441, 12084193, 12048087, AND 12048086 - UPDATED MAT'L SPECS. REMOVED MAT'L SPEC NOTES. NOTE 9 WAS 10 AND REMOVED OLD NOTE 9, REMOVED "Ø" DIM 2 PLCS AND "A" COLUMN FROM CHART, ADDED COLOR COLUMN TO CHART	251238	BRB	BRB/MR
19N004	R	12	-	-	-	REVISED CHART	261378	MLM	MLM/MR
23FE05	R	13	-	-	-	12048086, 12048087, 12084193, 12089678, 12110213, 12186769, 12052924, 12052925, 12124669, 12089442 AND 12186770 ADDED RESTRICTED STATUS; 15324973-4976 AND 15324979 MAT'L SPEC WAS M3466; ADDED NOTES COLUMN TO CHART; NOTE 7 WAS 9, NOTE 8 WAS 7 AND NOTE 9 WAS 8; REMOVED DIM "C" FROM TYPE 402 VIEW	265239	RH	RH/MR
10JN05	R	14	-	-	-	REVISED GRAPHICS	269180	QPS	JVM/MPR
17FE06	R	15	-	-	-	REVISED CHART	277502	MM	MM/MR
03MR06	R	16	-	-	-	15324973-76 & 15324979 - MAT'L SPEC WAS M3469	277946	HCB	JVM/MR
17AU06	R	17	-	-	-	15324975 - OBSOLETE	273517	CCV	AUG/MR
03OC06	R	18	-	-	-	ALL ACTIVE PARTS - ADDED SEALING RIBS VIEWS, OVERALL LENGTH LABEL, SEALING RIBS LABEL, ANTI-STICK RING OPTIONAL CONSTRUCTION 1 & 2 VIEWS AND DIMS (2 PLCS); 12084193 & 12124669 - REMOVED RESTRICTED, OPTIONAL CONSTRUCTION VIEWS, CONSTRUCTION LINE VIEWS, TYPES 404, 405 & 406 VIEWS AND COLUMNS C, F & Ø FROM CHART; DIM Ø 3.45 WAS Ø C, DIM Ø 5.75 Ø 0.2 WAS Ø Ø & DIM 7.5 WAS F, CABLE ØD RANGE 1.2 - 1.7 WAS 1.29 - 1.7 AND EQUIVALENT CABLE SEAL COLUMN; 15324973-74, 15324976 & 15324979 - MAT'L SPEC M3469 WAS M3466 & ADDED ALTERNATE MAT'L SPEC M3466XXX	285225	JBD	FRG/MPR
11OC07	R	19	-	-	-	ALL ACTIVE PARTS - ADDED NOTE 10, USAGE COLUMN AND CHAMFER TO TYPES 401, REVISED TYPE 403 TO 401	402596	RH	RH/MPR
30SE08	R	20	-	-	-	13713910 & 13713911 - RELEASED	406278	RRR	AGN/RRR
01MY09	R	21	-	-	-	ALL ACTIVE PARTS - UPDATED MAT'L SPEC TO GENERIC CALLOUT, REMOVED ALTERNATE MAT'L SPEC COLUMN FROM CHART; 12186769 - REMOVED NOTE FROM CHART AND 13713910 & 13713911 - OBSOLETE	407894	RTV	AUG/MPR
03JN09	R	22	-	-	-	13766444 - RELEASED	408127	ECB	AUG/JGS
24JL09	R	23	-	-	-	ALL PARTS - ADDED VOLUME COLUMN AND REMOVED COLOR COLUMN	408462	ECB	AUG/MPR
30OC09	R	24	-	-	-	12084193 - UPDATED PDM ATTRIBUTES	409370	JAR	JAR/MPR
15MY10	R	25	-	-	-	UPDATED PDM ATTRIBUTES	410847	MAL	MAL/JFB
15JN10	R	26	-	-	-	12052924-25, 12089442, 12124669, 12146011, 12186770 & 13713910 - MOVED TO SHIT 6; 12048086-B7 & 12089678 - OBSOLETE AND ADDED "REPLACED BY" COLUMN ON CHART	411067	AGM	JAA/MPR
12JA11	R	27	-	-	-	15324973 - UPDATED PDM ATTRIBUTES	413028	AHY	DMC/GEM

NOTES

- UNLESS OTHERWISE SPECIFIED AND/OR INDICATED: DIMENSIONS ARE TO FACE OF VIEW SHOWN AND AUTOMATICALLY ROUNDED BY COMPUTER FOR INSPECTION (SEE MATH MODEL FOR PRECISE DIMENSIONS). FOR ALL OTHER DIMENSIONS NOT SHOWN BUT REQUIRED FOR TOOL BUILD, SEE MATH MODEL FOR PRECISE TOOL PATH DATA.
- SEALING RIBS ARE IDENTICAL, EXCEPT AS SHOWN.
- PARTS NOT MADE ON FLASHLESS MOLDS MUST BE DEFLASHED, WASHED AND DRIED AFTER MOLDING. WASHING SHOULD OCCUR WITHIN 12 HOURS AFTER MOLDING.
- PARTS ARE TO BE PACKAGED IN SEALED PLASTIC BAGS. GROSS WEIGHT INCLUDING CARTON IS NOT TO EXCEED 34 POUNDS.
- PARTS MUST BE MADE FROM VIRGIN MATERIAL ONLY.
- TO IMPROVE SEAL PROCESSING ON SLIPPERY OR SMOOTH CABLE INSULATION, THE APPLICATION ENGINEER MAY SURFACE THE NEXT SMALLER SEAL SIZE P/N IN PLACE OF THE INDICATED SEAL FOR THE "CABLE O.D." LISTED IN THE CHART.
- DESIGNED FOR 0.8 MM<sup>2</sup> SOLID CORE DRAIN WIRE Ø 1.002 ± 0.007
- PARTS MADE OF FLUOROSILICONE MUST BE POST-CURED FOR 4 HRS AT 400° F.
- THIS PRODUCT IS NOT CATEGORIZED AS AN APPEARANCE ITEM. MINOR IMPERFECTIONS INCLUDING, BUT NOT LIMITED TO, FLOW MARKS, COLOR BLEMISHES, GATE VESTIGE, AND SOFT FLASH THAT DO NOT AFFECT THE FIT, FORM, OR FUNCTION OF THE PART ARE PERMISSIBLE PER DPNP-4.7-CS-01.
- P/N 13713911 MUST BE POST-BAKED FOR 4 HOURS AT 400° F.
- SEE 12010295 SHEET 6 FOR MYLAR ASSEMBLY INFORMATION.

PART NO	REV	N/P	STATUS	MATERIAL SPECIFICATION AND COLOR	TYPE	CABLE O.D. ±0.05 SEE NOTE #5	CAVITY ID	EQUIVALENT CABLE SEAL	NOTES	VOLUME	REPLACED BY
13766444	01	AA	-	SILICONE METHYL/VINYL GRAY	401	2.15-1.6	5.2	15324979	-	0.099	-
13713911	01	AA	OBSOLETE	SILICONE METHYL/VINYL GREEN	401	2.85-2.03	5.2	-	SEE NOTE 10	0.092	-
15393249	01	AJ	-	FLUOROSILICONE METHYL/VINYL GREEN	401	2.15-1.6	5.2	-	SEE NOTE 8	0.099	-
15324979	01	AJ	-	SILICONE METHYL/VINYL GRAY	401	2.15-1.6	5.2	12186769	-	0.099	-
15324976	01	AJ	-	SILICONE METHYL/VINYL WHITE	401	2.15-1.6	5.2	12089678	-	0.099	-
15324975	01	AF	OBSOLETE	SILICONE METHYL/VINYL OCHER	402	1.009-0.995	5.2	-	SEE NOTE 7	0.109	-
15324974	01	AK	-	SILICONE METHYL/VINYL BLUE	401	1.7-1.2	5.2	12048087	-	0.105	-
15324973	01	AK	-	SILICONE METHYL/VINYL REDDISH BROWN	401	2.85-2.03	5.2	12048086	-	0.092	-
12186769	B9	-	-	SILICONE METHYL/VINYL GRAY	401	2.15-1.6	5.2	15324979	-	0.099	-
12129926	B7	-	-	FLUOROSILICONE METHYL/VINYL ORANGE	401	1.7-1.29	5.2	-	SEE NOTE 8	0.105	-
12110213	B8	-	-	FLUOROCARBON BLUE	401	2.65-1.85	5.2	-	-	0.099	-
12089678	A10	-	OBSOLETE	SILICONE METHYL/VINYL WHITE	401	2.15-1.6	5.2	15324976	-	0.099	15324976
12084193	B	-	OBSOLETE	SILICONE METHYL/VINYL YELLOW	401	2.15-1.6	5.2	-	-	0.099	-
12084193	AB	-	-	SILICONE METHYL/VINYL TAN	402	1.009-0.995	5.2	-	SEE NOTE 7	0.109	-
12048087	02	AH	OBSOLETE	SILICONE METHYL/VINYL BLUE	401	1.7-1.29	5.2	15324974	-	0.105	15324974
12048086	02	AG	OBSOLETE	SILICONE METHYL/VINYL REDDISH BROWN	401	2.85-2.03	5.2	15324973	-	0.092	15324973

DIMENSIONAL RANGE (MM)	CHART SET
FROM > 0	> 20
> 20	> 30
> 30	> 40
> 40	> 50
> 50	> 60
> 60	> 70
> 70	> 80
> 80	> 90
> 90	> 100
> 100	> 150
> 150	> 200
> 200	> 250
> 250	> 300
> 300	> 400
> 400	> 500
> 500	> 600
> 600	> 700
> 700	> 800
> 800	> 900
> 900	> 1000

DRW TYPE: PART DRAWING

STILE: [Symbol]

VOLUME (QWP): [Symbol]

DISTR CODE: [Symbol]

UNLESS OTHERWISE SPECIFIED THIS DOCUMENT IS IN ACCORDANCE WITH ASME Y14.5M-1994 AS MODIFIED BY THE 0M GLOBAL DIMENSIONING AND TOLERANCING ADDENDUM - 1997. ALL GEOMETRIC TOLERANCES AND RELATED DATUMS APPLY PER RULE #1 EXCEPT FORM MCM DOES NOT APPLY WHEN RELATIONSHIP BETWEEN FEATURES IS ESTABLISHED BY ORIENTATION OR LOCATION TOLERANCES. SEPARATE POSITION CALLOUTS MAY BE SHOWN SEPARATELY. ALL DIMENSIONS ARE IN MILLIMETERS.

PROCESS SENSITIVE DIMENSION [Symbol]

DIMENSIONS ENCLOSED IN ( ) INDICATE REFERENCE DIMENSIONS AND NO TOLERANCE LIMITS ARE ESTABLISHED.

THIRD ANGLE PROJECTION [Symbol]

DO NOT SCALE [Symbol]

USE MATH DATA [Symbol]

**DELPHI**  
DELPHI PACKARD ELECTRICAL/ELECTRONIC ARCHITECTURE  
WARREN, OH

OR: J. HOUJELMAN, T. MUDREY, A. HERMANN, AP/VD4

DATE: 13JAB9, 26JAB9, 31JAB9

SUBSTANCES OF CONCERN AND RECYCLED CONTENT PER DELPHI (0449901)

MATERIAL SEE CHART

DRAWING NAME: TAXI SEAL CBL 1W M/P

DRAWING NUMBER: 12010295

SIZE: A0, SCALE: 10:1, FRAME NO: 1 OF 2, SHEET NO: 4 OF 4, STG: R, REV: 27