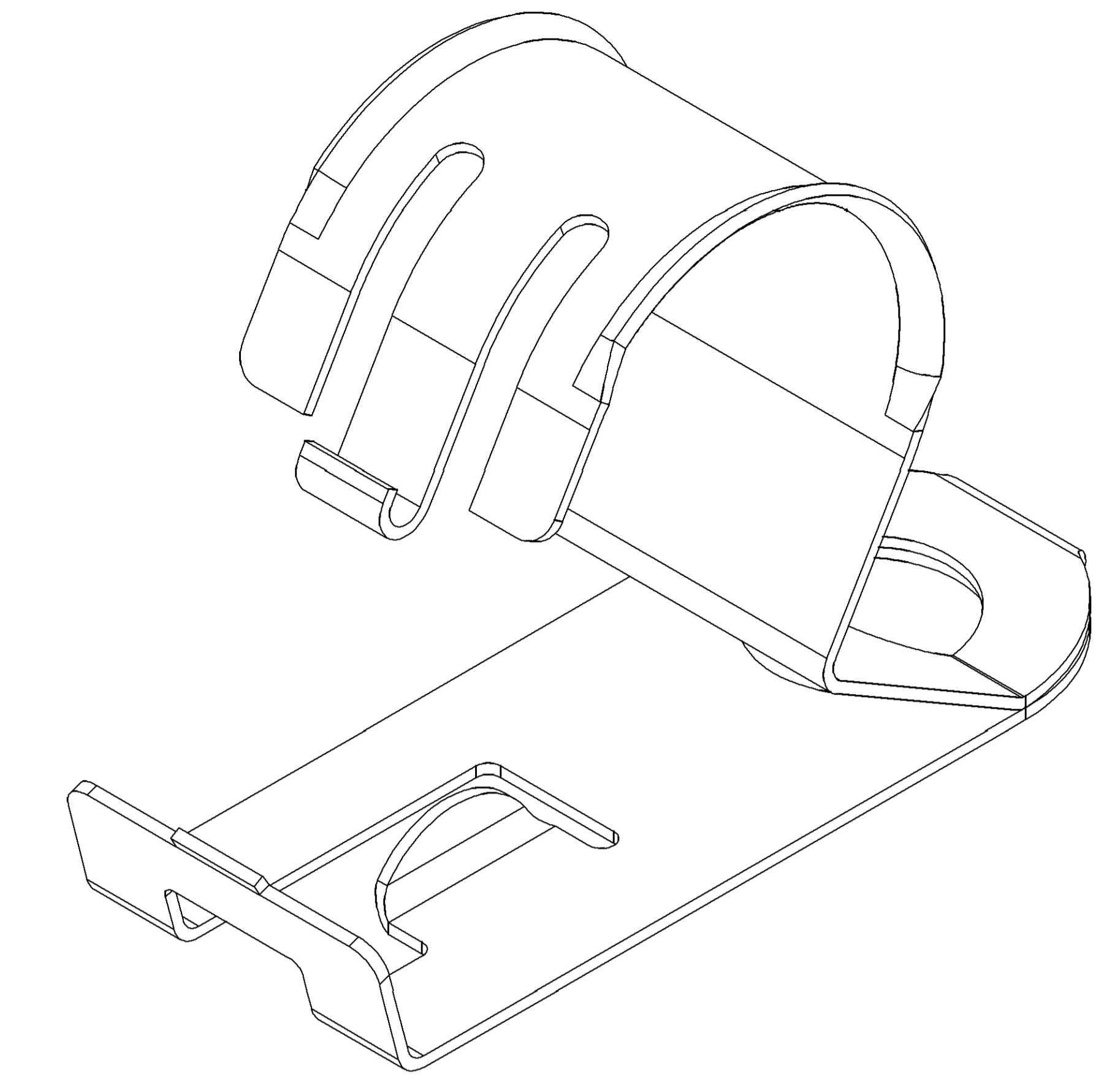
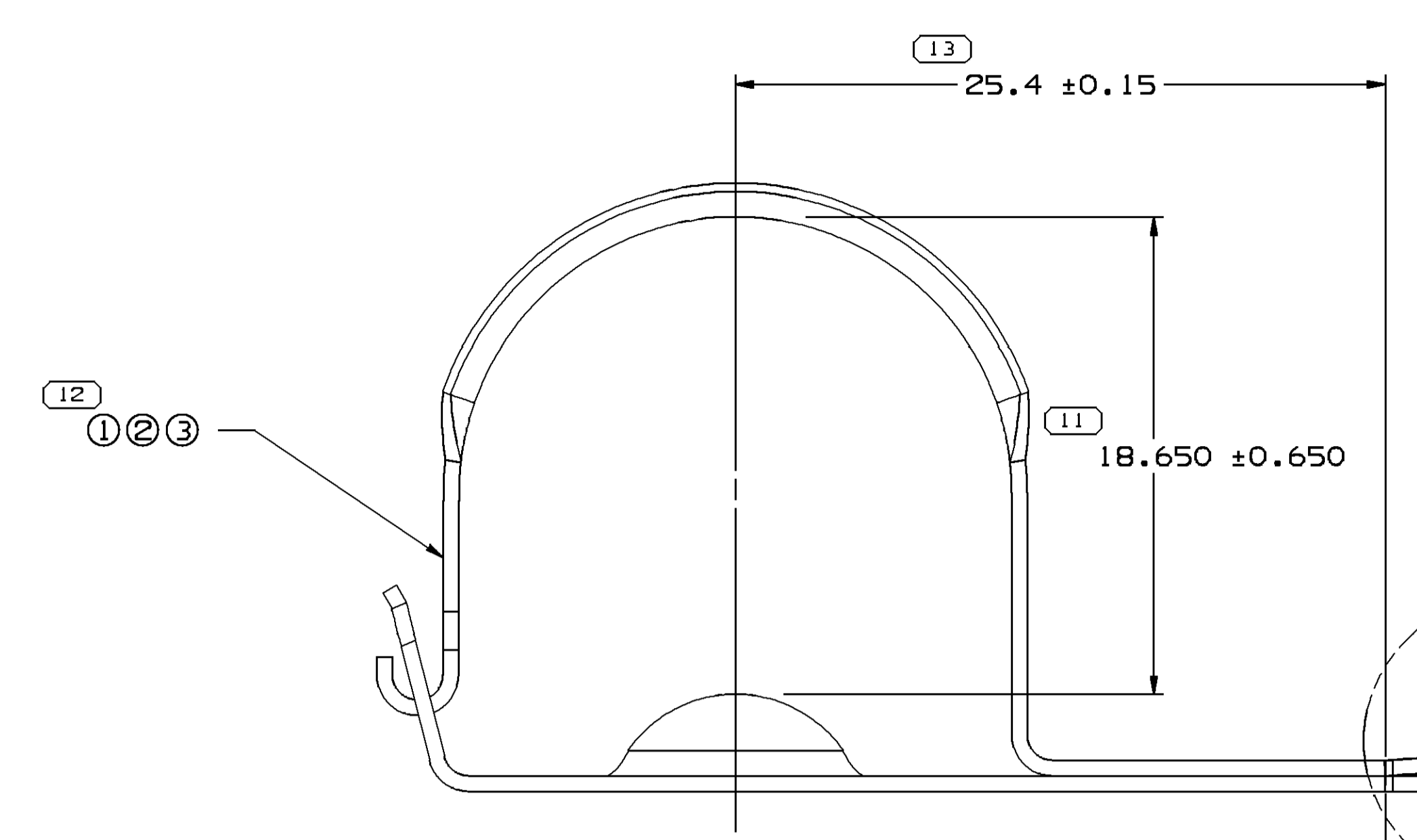


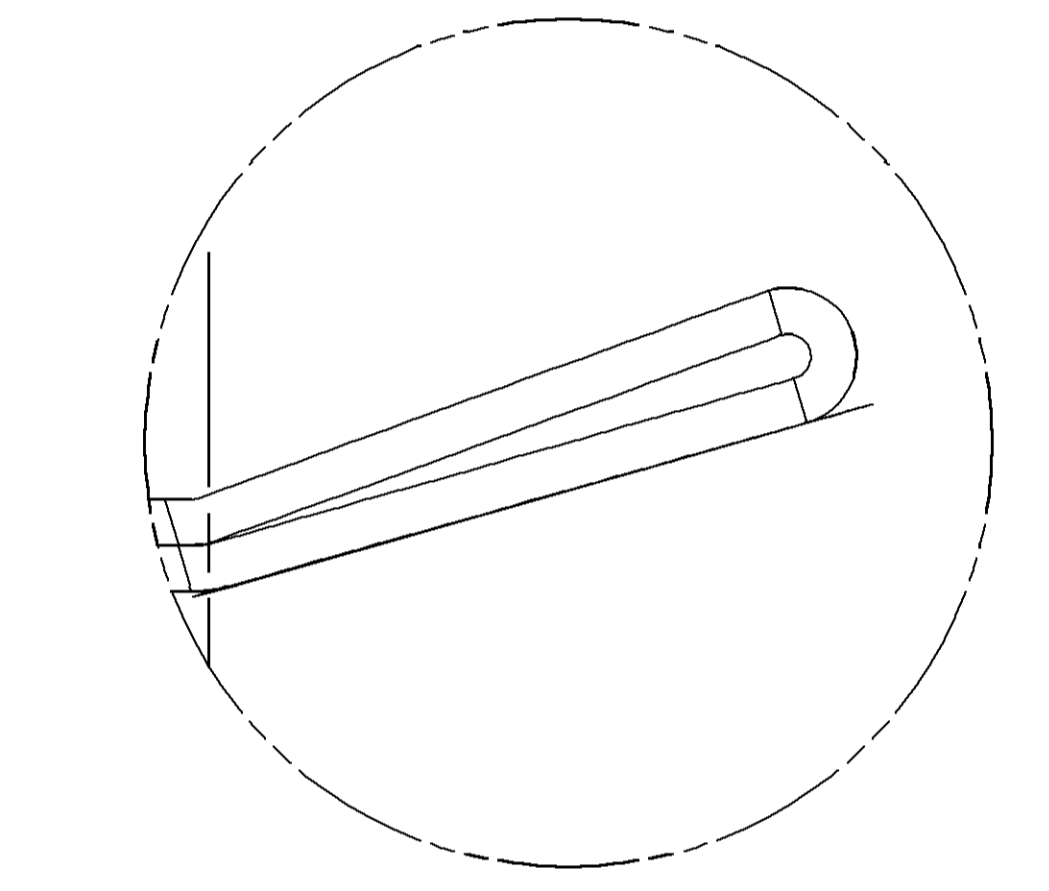
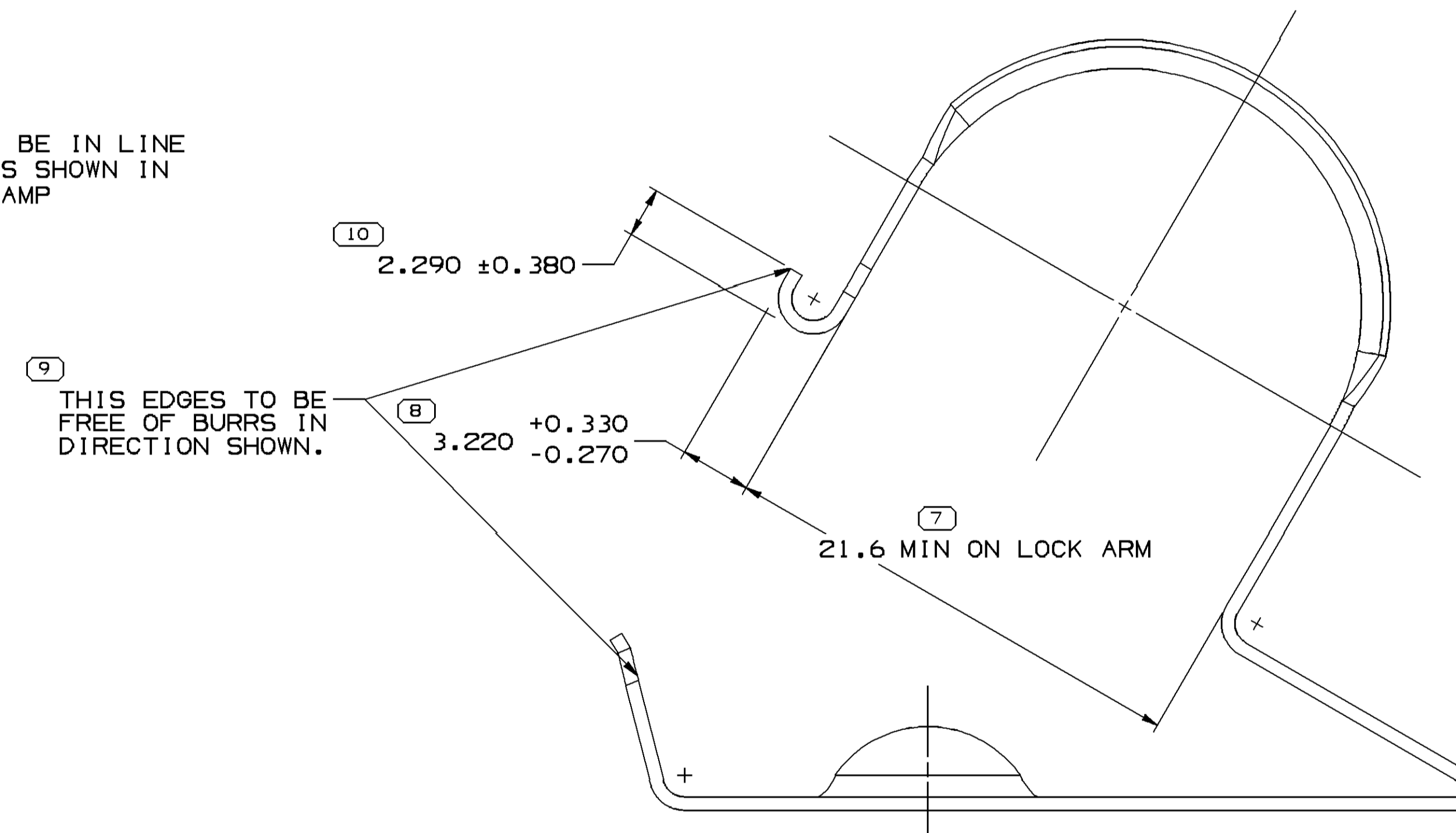
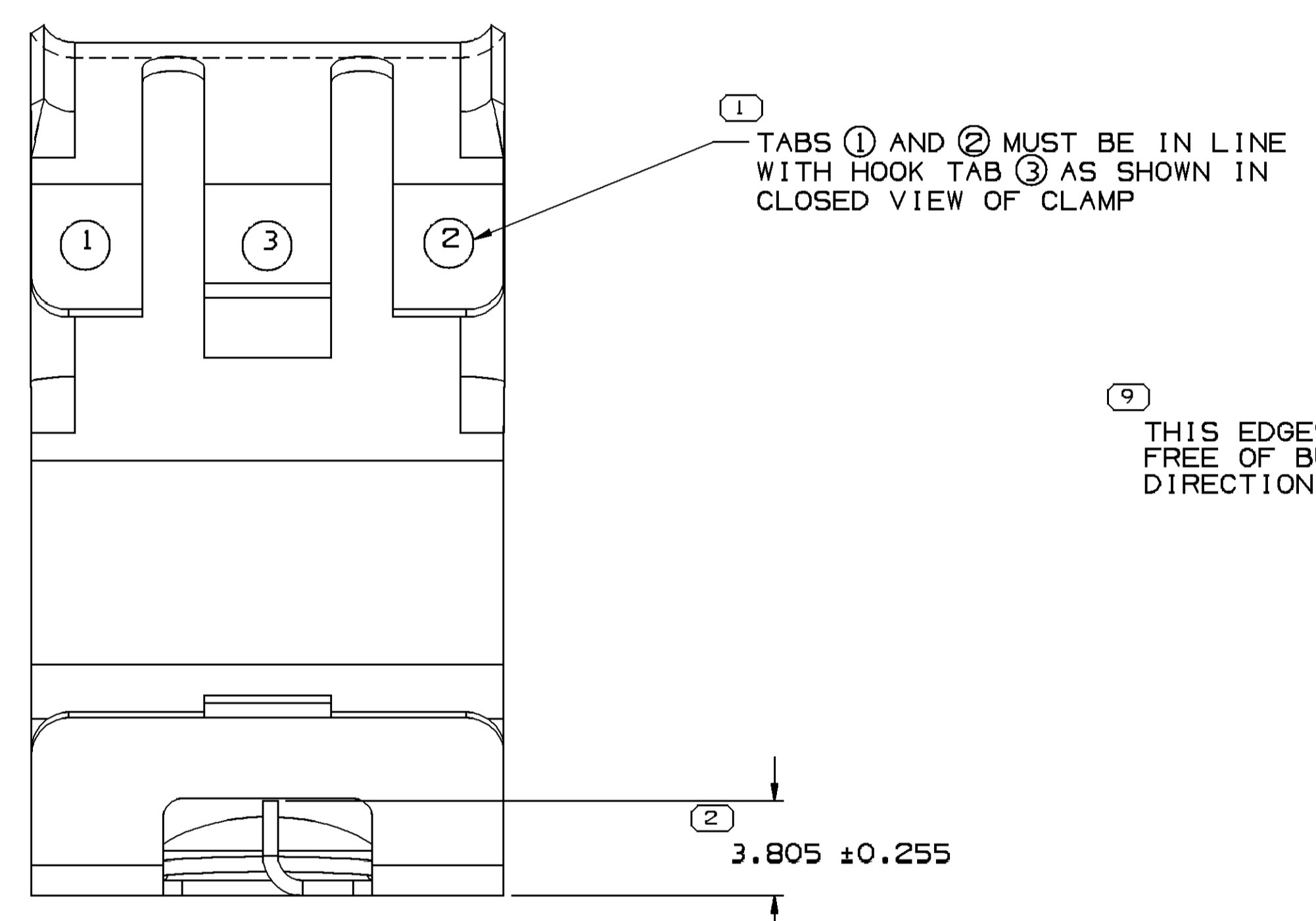
SYMBOL DEFINITION		TOTAL NO OF INSPECTIONS REQUIRED		MISSING SYMBOL NUMBER	
A	DIMENSION WITHOUT AN INSPECTION REPORT SYMBOL DOES NOT REQUIRE INSPECTION. IT MAY BE CONTROLLED ON THE INDIVIDUAL COMPONENT DRAWING.		13		
		LAST NO. USED	13		

DWS STATUS		ZONE		REVISION HISTORY		AUTH		DR		APVD	
DATE	STG	REV	N/P	CHG							
14JN04	R	01	-	-		CLEARED REV COLUMN AND REDRAWN TO PD: 12092430 - OBSOLETE AND ADDED NOTE 6	253207	ESH	JAA	JAA	SAN
04AU04	R	02	-	-		154495916, 15495917, 15495918 - RELEASED, ADDED PROCESS NOTES 5 & 6	257561	ADK	ADK	JAA	SAN
26MR05	R	03	-	-		ALL ACTIVE PARTS - DRAWING NAME WAS MOUN CLAMP CDT	266201	CCV	JAA	JAA	TP
28OC05	R	04	-	-		12020286, 12059353 & 12129641 - OBSOLETE	273406	JTZ	JAA	JAA	P8D
13AP06	R	05	-	-		ALL ACTIVE PARTS - CREATED TODAY, UPDATED LAYOUT DWG & REMOVED NOTE #6: 13580718 - RELEASED & ADDED PROCESS NOTE #7	278775	RMG	JAA	JAA	TP
06NO14	R	06	-	-		12084584 - ADDED "PN TO USE" NOTE & ON CHART	428095	IMF	RL6	RL6	RL6
05DE14	R	07	-	-		ALL ACTIVE PARTS - DIM 21.6 WAS 20.320	428373	VHG	VMR	VHG	VHG
19FE15	R	08	-	-		ALL ACTIVE PARTS - ADDED PREFERRED, ALTERNATIVE MAT'L SPEC IN CHART, UPDATED MAT'L CALLOUT & REVISED PROCESS NOTES	428898	VHG	VMR	VHG	VHG
26MR15	R	09	-	-		ALL ACTIVE PARTS - DIM 21.6 MIN ON LOCK ARM WAS 21.6 ON LOCK ARM	429111	VHG	VMR	VHG	VHG
14AP15	R	10	-	-		12084584, 13580718, 15495917 & 15495916 - UPDATED PHYSICAL REVISION	429355	VHG	VMR	VHG	VHG



CLOSED VIEW OF CLAMP

SEE DETAIL E



OPTIONAL CONSTRUCTION DETAIL E SCALE 10:1

- 1.82 (THREE STOCK THICKNESS MIN)
- NO CRACKS PERMISSIBLE.
- INSIDE SURFACES OF CLAMP MAY BE VOID OF PLATING IN THIS AREA.

PROCESS NOTES:

- ZINC PLATE, RELIEVE HYDROGEN EMBRITTLEMENT (4 HOURS AT 375° TO 450°F), AND GOLD CHROMATE TREAT PER GM-4342-M CODE 10 D 24.
- BLACK PHOSPHATE/ORGANIC/OIL TYPE 6M-6174-M.
- PLATE TO .0003 INCH ZINC, BLACK CHROMATE AND CLEAR DIP. PLATING MUST WITHSTAND 168 HOURS MINIMUM TO RED RUST IN NEUTRAL SALT FOG, EXCEPT FOR "SHARP" EDGES AND SHOULD BE BLACK IN COLOR. PLATING SHALL NOT CRACK, PEEL OR FLAKE OFF WHEN ANY PART OF CLAMP IS BENT 90° AND BACK ONCE AROUND A 1/8" (3.18 MM) ROD OR MANDRILL AND WHEN CLAMP IS OPENED THRU A 90° ARC THEN CLOSED & LOCKED.
- PRE-PLATE MATERIAL WITH NICKEL ZINC - COAT PLUS TO .00015" MIN. PER SIDE. IF PREFERRED MATERIAL IS USED THIS NOTE DOES NOT APPLY.
- PLATE PER DX551245-P ZINC WITH CLEAR TRIVALENT CHROME AND TOPCOAT. IF PREFERRED MATERIAL IS USED THIS NOTE DOES NOT APPLY.
- PLATE PER DX551318-P ZINC NICKEL WITH CLEAR TRIVALENT CHROME AND TOPCOAT. MUST WITHSTAND 400 HRS MINIMUM TO RED RUST IN NEUTRAL SALT FOG. IF PREFERRED MATERIAL IS USED THIS NOTE DOES NOT APPLY.
- PLATING MUST WITHSTAND 400 HRS. MINIMUM TO RED RUST IN NEUTRAL SALT-FOG, EXCEPT FOR SHARP EDGES.

NOTES

- UNLESS OTHERWISE SPECIFIED AND/OR INDICATED: DIMENSIONS ARE TO FACE OF VIEW SHOWN AND AUTOMATICALLY ROUNDED BY COMPUTER FOR INSPECTION (SEE MATH MODEL FOR PRECISE DIMENSIONS). FOR ALL OTHER DIMENSIONS NOT SHOWN BUT REQUIRED FOR TOOL BUILD, SEE MATH MODEL FOR PRECISE TOOL PATH DATA.
- DIMENSIONS OTHER THAN 3 PLACES SHOWN ON THIS DRAWING ARE REFERENCE DIMENSIONS INTENDED FOR DESIGN CRITERIA ONLY.
- THIS PART IS NOT CONTROLLED FOR AUTOMATIC FEEDING.
- ROCKWELL HARDNESS "15 T" TO BE 79-86.
- 0.13 HIGH BURR PERMISSIBLE, EXCEPT AS NOTED.
- 13971028 RECOMMENDED PN TO USE. COMMUNIZING ALL FEATURES WITH PERFORMANCE ENHANCEMENTS PER ENVIRONMENTAL TESTING'S.

PART NO	REV	N/P	PREFERRED MAT'L	ALTERNATIVE MAT'L	PROCESS	Ø A	Ø B	C	D	MOUNTING BOLT SIZE	MOUNTING HOLE SIZE AFTER FORM MINIMUM	CONDUIT HOLE SIZE (MM)	RECOMMENDED PN (SEE NOTE)
13580718	02	-	FERROUS ASTM A653 SS 9RD 40	METL SAE 1008-1010 STRIP STEEL #3 1/4 HD	7	10.3	11	4.500 / 4.240	43.65	3/8	10.05	16	-
15495918	01	AE	FERROUS ASTM A653 SS 9RD 40	METL SAE 1008 1/4 HD	5	13 ± 0.15	14.33 ± 0.15	3.3 / 3	45.27	M12	12.2 ± 0.15	16	-
15495917	02	-	FERROUS ASTM A653 SS 9RD 40	METL SAE 1008 1/4 HD	6	10.3	11	4.500 / 4.240	43.65	3/8	10.05	16	-
15495916	02	-	FERROUS ASTM A653 SS 9RD 40	METL SAE 1008 1/4 HD	5	10.3	11	4.500 / 4.240	43.65	3/8	10.05	16	-
12129641	A2	-	-	METL SAE 1008 1/4 HD	1	13 ± 0.15	14.33 ± 0.15	3.3 / 3	45.27	M12	12.2 ± 0.15	16	-
12092430	A1	-	-	METL SAE 1008 1/4 HD	1	11.9	12.68 ± 0.15	3.83 / 3.57	44.44	7/16	12.07 ± 0.15	16	-
12084584	03	-	FERROUS ASTM A653 SS 9RD 40	METL SAE 1008 1/4 HD	4	6.43	7.24	6.500 / 6.250	41.72	M6	6.2	16	6
12059353	B2	-	-	METL SAE 1008 1/4 HD	2	10.3	11	4.500 / 4.240	43.65	3/8	10.05	16	-
12020286	B2	-	-	METL SAE 1008 1/4 HD	1	10.3	11	4.500 / 4.240	43.65	3/8	10.05	16	-

LINE DRAWN THROUGH A PART NUMBER INDICATES THAT PHYSICAL PARTS ARE NOT AVAILABLE FOR ORDERING.

PART NUMBERS THAT DO NOT HAVE A LINE PRESENT INDICATE THAT PHYSICAL PARTS ARE AVAILABLE FOR ORDERING.

CONTACT DELPHI SALES TO ASSURE AVAILABILITY OF PARTS.

DWG TYPE: PART DRAWING

UNLESS OTHERWISE SPECIFIED THIS DOCUMENT IS IN ACCORDANCE WITH ASME Y14.5M-1994 AS MODIFIED BY THE 2003 SUPPLEMENT AND TELEPHONING ADDENDUM-2001. SEPARATE PATTERNS OF FEATURES MAY BE SHOWN SEPARATELY REGARDLESS OF DATUM REFERENCES.

ALL DIMENSIONS ARE IN MILLIMETERS

REFERENCE:

2 PROCESS SENSITIVE DIMENSION DIMENSIONS ENCLOSED IN () INDICATE REFERENCE DIMENSIONS AND NO TOLERANCE LIMITS ARE ESTABLISHED

THIRD ANGLE PROJECTION

DO NOT SCALE USE MATH DATA

DELPHI
DELPHI PACKARD ELECTRICAL/ELECTRONIC ARCHITECTURE

WARREN, OH
COPYRIGHT 1985 DELPHI CORPORATION AND/OR ITS AFFILIATES. ALL RIGHTS RESERVED.
THIS DRAWING IS THE PROPERTY OF DELPHI CORPORATION AND CONTAINS DELPHI CONFIDENTIAL INFORMATION. THE REPRODUCTION, DISTRIBUTION AND UTILIZATION OF THIS DOCUMENT OR ITS CONTENTS TO OTHERS, AS WELL AS COMMUNICATION OF ANY CONTENT TO OTHERS, WITHOUT EXPRESS AUTHORIZATION, IS PROHIBITED.

DRAWING NAME: TAXI MOUN CLAMP CDT 16MM

DRAWING NUMBER: 12059354

DATE: 10-10-15

SIZE: A0 SCALE: 5:1 FRAME NO: 1 OF 1 SHEET NO: 1 OF 1 STG REV: N/P