

ROHS COMPLIANT

INSULATOR: PA66, rated UL 94V-0
 Insulator color: Green
 Electrical:
 Contact: Brass, Tin plated
 Operation voltage: 300 VAC max
 Current rating: 8 Amps max
 Contact resistance: 20 mohms max
 Insulation resistance: 500 Mohms min @ 500 VDC
 Dielectric withstanding voltage: 2,000 VAC for 1 minute
 Environmental:
 Operating temperature: -40°C to +105°C
 Lead free, RoHS compliant.

SPECIFICATIONS:

Material:

Insulator: PA66, rated UL 94V-0

Insulator color: Green

Contact: Brass, Tin plated

Electrical:

Operation voltage: 300 VAC max

Current rating: 8 Amps max

Contact resistance: 20 mohms max

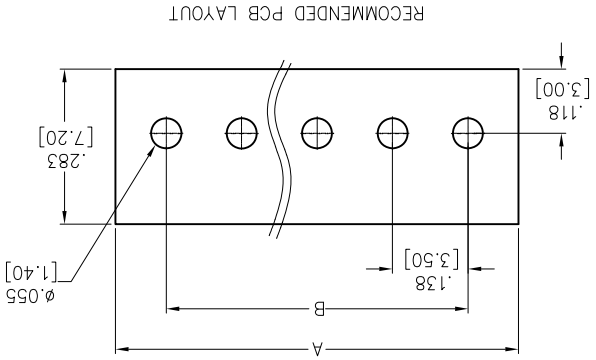
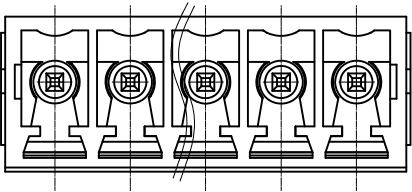
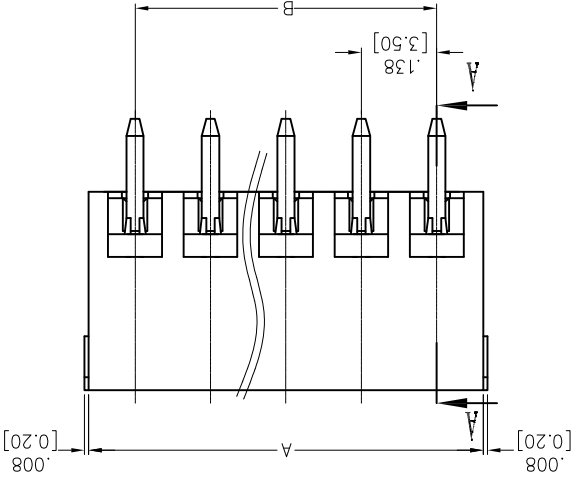
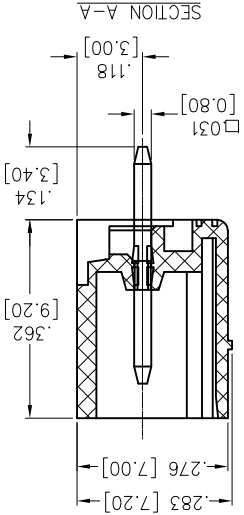
Insulation resistance: 500 Mohms min @ 500 VDC

Dielectric withstanding voltage: 2,000 VAC for 1 minute

Environmental:

Operating temperature: -40°C to +105°C

Lead free, RoHS compliant.



Positions: 02 thru 24
 A = .138 [3.50] x No. of Spaces + .169 [4.30]
 B = .138 [3.50] x No. of Spaces

APPROVALS		DATE
X	±.10	∅X ±.10
XX	±.020	∅XX ±.015
XXX	±.015	∅XXX ±.010

UNLESS OTHERWISE SPECIFIED

ALL DIMENSIONS ARE INCHES [MM]

TOLERANCES: EXCEPT AS NOTED

INCHES

HOLES

∅X ±.10

∅XX ±.020

∅XXX ±.015

APPROVALS

DATE

6/13/14

AY

6/13/14

APPROVED

CHECKED

DRAWN

DATE

APPROVALS

DATE

6/13/14

AY

6/13/14

2

1

REF: S00067C

SCALE: NTS

SHEET 1 OF 1

SIZE

PART NO.

EBRA-XX-A

REV.

A

TERMINAL BLOCK, STRAIGHT, .138" [3.50] PITCH

TITLE

909 Rahway Avenue, Union, NJ 07083
 Phone: 908-687-5000 Fax: 908-687-5710

ADAM TECH

APPROVED: _____

DATE: _____ TITLE: _____

Rev	AWO #	Description	Date	Appr
-		RELEASED	6/13/14	
A		UPDATE SHAPE	10/27/14	AY/NP

2

1

X-ON Electronics

Largest Supplier of Electrical and Electronic Components

Click to view similar products for [Pluggable Terminal Blocks](#) category:

Click to view products by [Adam](#) manufacturer:

Other Similar products are found below :

[57.404.7553](#) [57.504.0053.7](#) [57.510.0053](#) [57.910.6153](#) [01.112.1453](#) [CTB932VE/6](#) [MC 1.5/ 6-ST-3.5 GY AU](#) [ET02015000J0G](#) [734-104](#) [734-302](#) [734-304](#) [8-141-P](#) [FKCT 2.5/ 3-ST KMGY](#) [860505](#) [860508](#) [860516](#) [860810](#) [861908](#) [GBPACX-12](#) [93.731.4953.0](#) [PV05-5,08-K](#) [PVP02-5,00](#) [PVP04-3,50](#) [PVS02-5,00](#) [1-1986160-3](#) [H-10](#) [1546228-5](#) [ELFP03110](#) [ELVP03100](#) [ELXH03100](#) [ELXP041G0](#) [ELXT046G0](#) [1700101](#) [1700410](#) [1700425](#) [1703176](#) [1703243](#) [1705229](#) [1710175](#) [1714537](#) [1717806](#) [1719600](#) [1728941](#) [1729386](#) [1734692](#) [1734795](#) [1736036](#) [1740194](#) [1740291](#) [1740628](#)