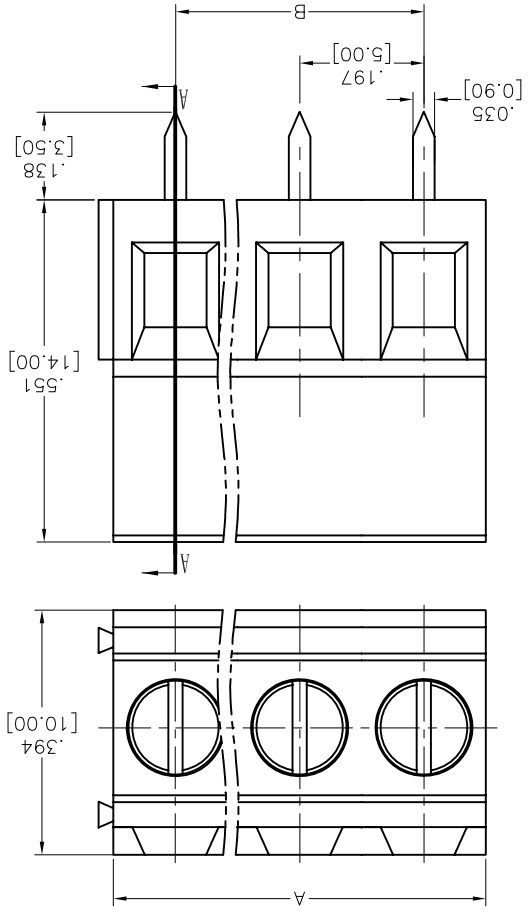
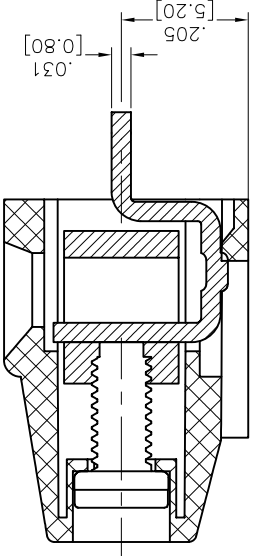
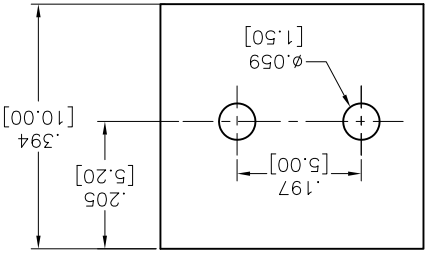


|     |       |             |        |      |
|-----|-------|-------------|--------|------|
| Rev | AWO # | Description | Date   | Appr |
| -   |       | RELEASED    | 8/2/13 |      |

APPROVED: \_\_\_\_\_ DATE: \_\_\_\_\_



RECOMMENDED PCB LAYOUT



Positions: 2 thru 24  
 A = .197 [5.00] x No. of Positions  
 B = .197 [5.00] x No. of Spaces

|                                |             |           |      |
|--------------------------------|-------------|-----------|------|
| UNLESS OTHERWISE SPECIFIED     |             | APPROVED  |      |
| ALL DIMENSIONS ARE INCHES [MM] |             | CHECKED   | NP   |
| TOLERANCES: EXCEPT AS NOTED    |             | DRAWN     | AV   |
| INCHES                         |             | APPROVALS | DATE |
| X ± .10                        | ØX ± .10    |           |      |
| XX ± .020                      | ØXX ± .015  |           |      |
| XXX ± .015                     | ØXXX ± .010 |           |      |
| SIZE                           | X           |           |      |
| PART NO.                       | EBVA-XX-C   |           |      |
| REV.                           | -           |           |      |

**ADAM TECH**  
 909 Rahway Avenue, Union, NJ 07083  
 Phone: 908-687-5000 Fax: 908-687-5710

TITLE  
 TERMINAL BLOCK, .197 [5.00] PITCH

REF: S00067C  
 SCALE: NTS  
 SHEET 1 OF 1



**SPECIFICATIONS:**  
 Material: Insulator: PA66, rated UL 94V-0  
 Screw: Steel, M2.5/Zinc plated  
 Cage: Brass, Tin plated  
 Pin Header: Brass, Tin plated  
 Electrical:  
 Voltage rated: 300 VAC  
 Current rated: 15 Amps  
 Contact resistance: 20 mΩ  
 Insulation resistance: 500 MΩ @ 500 VDC  
 Withstanding voltage: 2000V AC/1 Min  
 Mechanical:  
 Solid wire: 30-14AWG 2.5mm<sup>2</sup>  
 Torque (Lb-in): 0.4Nm (3.5lb-in)  
 Strip length: 6-7mm  
 Temperature Rating:  
 Operating temperature: -40°C to +105°C  
 Environmental:  
 Lead free, RoHS compliant.

1 2 3 4 5 6

A B C D

## X-ON Electronics

Largest Supplier of Electrical and Electronic Components

*Click to view similar products for [Pluggable Terminal Blocks](#) category:*

*Click to view products by [Adam](#) manufacturer:*

Other Similar products are found below :

[57.404.7553](#) [57.504.0053.7](#) [57.510.0053](#) [57.910.6153](#) [01.112.1453](#) [CTB932VE/6](#) [MC 1.5/ 6-ST-3.5 GY AU](#) [ET02015000J0G](#) [734-104](#) [734-302](#) [734-304](#) [8-141-P](#) [FKCT 2.5/ 3-ST KMGY](#) [860505](#) [860508](#) [860516](#) [860810](#) [861908](#) [GBPACX-12](#) [93.731.4953.0](#) [PV05-5,08-K](#) [PVP02-5,00](#) [PVP04-3,50](#) [PVS02-5,00](#) [1-1986160-3](#) [H-10](#) [1546228-5](#) [ELFH09150](#) [ELFH16150](#) [ELFP03110](#) [ELFT06250](#) [ELFT07250](#) [ELVF09400](#) [ELVP03100](#) [ELXH03100](#) [ELXH071G0E](#) [ELXP041G0](#) [ELXT046G0](#) [1700101](#) [1700410](#) [1700425](#) [1703176](#) [1705229](#) [1710175](#) [1714537](#) [1717806](#) [1719600](#) [1729386](#) [1734692](#) [1734795](#)