



Zakład Mechaniki i Elektroniki
ZAMEL sp.j.
J.W. Dzida, K. Łodzińska

zAMEL

ul. Zielona 27, 43-200 Pszczyna, Poland
Tel. +48 (32) 210 46 65, Fax +48 (32) 210 80 04
www.zamelcet.com, e-mail: marketing@zamel.pl

DESCRIPTION

The ED-1 electromechanical bell may be used in various systems, where acoustic signalling is needed (e.g. phase decay signalling). The bell is designed for mounting on TH35 rail.

FEATURES

- ☞ Electromechanical bell,
- ☞ Brass bell gong in a plastic casing,
- ☞ Designed for acoustic signalling at home and industrial systems,
- ☞ Either surface-mounted or TH35 rail mounted,
- ☞ Double-module casing,
- ☞ Sound level: approximately 68 dB.



CAUTION

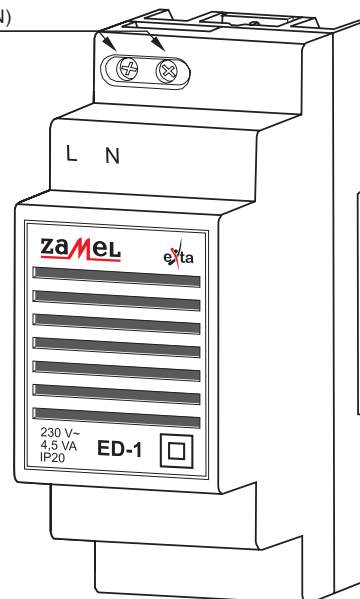
The device should be connected to a single-phase system accordingly to current standards. The device connections will be described in this manual. Only qualified electricians are allowed to mount, connect and adjust the bell. It is necessary to read this manual before the device mounting. Do not disassembly the timer casing or you will lose any warranty rights and expose yourself to the electric shock hazard. Before mounting operation make sure of disconnecting the connection wires from the electric network. Use a cross-head screwdriver of 3.5 mm diameter to mount the device. The bell should be carried, stored and used in an appropriate way. Do not mount the bell in case of any device parts lack, damage or deformation. In case of malfunction please notify the manufacturer.

TECHNICAL DATA

ED - 1	
Power terminals:	L, N
Rated voltage:	230 V~
Rated voltage tolerance:	-15 ÷ +10 %
Rated frequency:	50 / 60 Hz
Rated current:	4,5 VA
Switch-ON control:	electromechanical bell
Connection terminals quantity:	2
Connection wire section:	0,2 ÷ 2,50 mm ²
Operating temperature:	0 ÷ +35 °C
Operating position:	optional
Casing fastening:	TH 35 rail (accordingly to PN-EN 60715)
Casing IP:	IP20 (PN-EN 60529)
Protection class:	II
Overvoltage category:	II
Pollution level:	2
Dimensions:	double-module (35 mm) 90 x 35 x 66 mm
Weight:	92 g
Standard conformity:	PN-EN 60669-1; PN-EN 60669-2-1 PN-EN 61000-4-2,3,4,5,6,11

APPEARANCE

Power terminals (L, N)

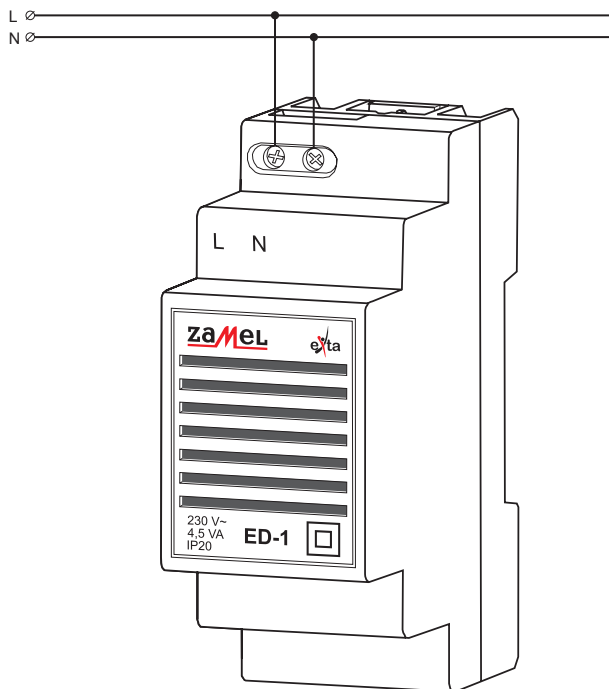


ASSEMBLY, OPERATION

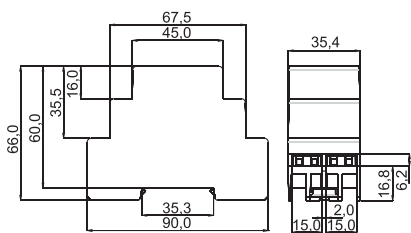
1. Disconnect the electric network by means of an appropriate cut-off, current-limiting circuit-breaker or separator.
2. Check if there is no any voltage between power leads by means of an appropriate gauge.
3. Mount the bell on TH 35 rail.
4. Connect the system leads according to the electrical diagram.
5. Connect power supply circuit.

The bell is ready to work just right after its appropriate connecting. The bell starts operation after supplying the device. The device generates the sound until it is supplied.

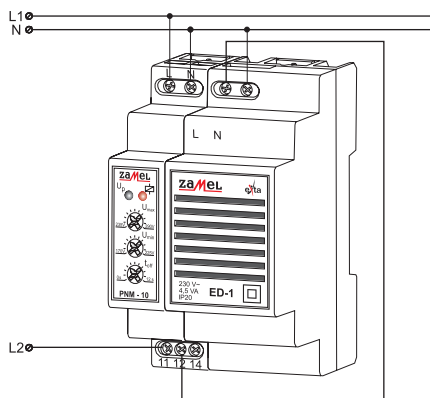
CONNECTIONS



CASING DIMENSIONS



APPLICATION



Control and L1 phase voltage drop signalling circuit.

When L1 voltage drops below the value preset on PNM-10 voltage relay (e.g. 200 V) the circuit will switch ON alarm signal (the ED -1 bell).

NOTE: The bell is supplied from L2 phase. Therefore it is necessary to maintain 230 V on this phase.

PRODUCT FAMILY

The ED-1 signalling bell is a member of the EDM product family.

EDM - xx

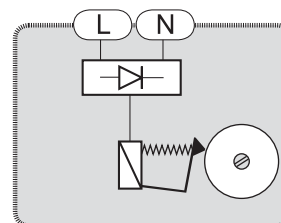
Device version:
01 - continuous operation
02 - erasable
1 - bell

Device type

TIME DIAGRAM



UNIT DIAGRAM



WARRANTY

The product warranty is for a period of 24 months

1. ZMIE ZAMEL SP. J. assures 24 months guarantee for the product.
2. The manufacturer's guarantee does not cover any of the following actions:
 - a) mechanical damage during transport, loading / unloading or under other circumstances,
 - b) damage caused by incorrect product mounting or misuse,
 - c) damage caused by unauthorised modifications made by the PURCHASER or any third parties to the product or any other devices needed for the product functioning,
 - d) damage caused by Act of God or any other incidents independent of the manufacturer.
3. The PURCHASER shall lay any claims in writing to the dealer or ZMIE ZAMEL SP. J.
4. ZMIE ZAMEL SP. J. is liable for processing any claim according to current Polish legislation.
5. ZMIE ZAMEL SP. J. shall process the claim at its own discretion: product repair, replacement or money return.
6. The manufacturer's guarantee is valid in the Republic of Poland.
7. The PURCHASER's statutory rights in any applicable legislation whether against the retailer arising from the purchase contract or otherwise are not affected by this warranty.

Dealer signature & stamp, purchase date

X-ON Electronics

Largest Supplier of Electrical and Electronic Components

Click to view similar products for [Mounting Fixings](#) category:

Click to view products by [Zamel](#) manufacturer:

Other Similar products are found below :

[007310](#) [007541](#) [6-141-P](#) [620HA038NF09](#) [620HA038NF11](#) [71-074914-006](#) [71-146610-6H](#) [712HA170B23128-N](#) [71-441549-19S](#) [71-490451-4H](#) [75-69211-3P](#) [75-69220-27S](#) [75-69224-5S](#) [770-006A109](#) [770-006A109R](#) [770-006A207](#) [770-006A208W1](#) [770-006A209](#) [770-006A306](#) [770-006A703W1](#) [770-006A704](#) [770-006A704W1](#) [770-006A705](#) [770-006A706](#) [770-006A706W1](#) [770-006A707](#) [770-006A709](#) [770-007A203](#) [770-007A203W1](#) [770-007A204W1](#) [770-007A207W1](#) [770-007A703](#) [770-007A704W1](#) [770-007A706](#) [770-007A707W1](#) [770-010Y208](#) [770-010Y308](#) [770-010Y705](#) [770-010Y706](#) [770-010Y707W1](#) [770-011T201](#) [770-011T203](#) [770-011T701W1](#) [770-011T702](#) [770-011T702W1](#) [770-011T703](#) [770-013210W1](#) [770-013311](#) [770-013312](#) [770-013709](#)