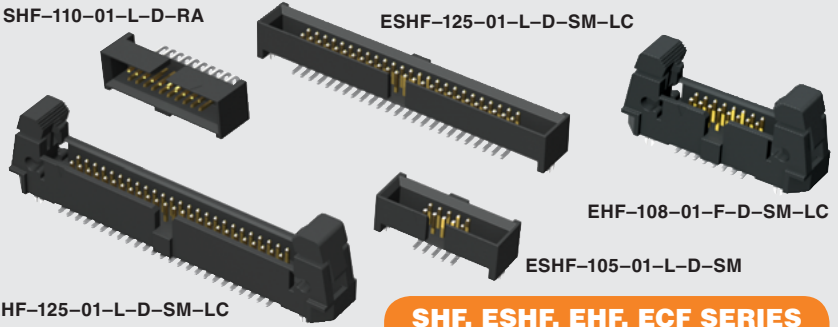


SHF-110-01-L-D-RA

ESHF-125-01-L-D-SM-LC



EHF-108-01-F-D-SM-LC

ESHF-105-01-L-D-SM

EHF-125-01-L-D-SM-LC

SHF, ESHF, EHF, ECF SERIES

(1,27 mm) .050"

SHROUDED & EJECTOR IDC HEADER

SHF, ESHF Mates with:
FFSD, FFTP (SHF)

EHF Mates with:
FFSD*, FFTP

SPECIFICATIONS

For complete specifications see www.samtec.com?SHF, www.samtec.com?ESHF or www.samtec.com?EHF

Insulator Material:
Black Liquid Crystal Polymer

Terminal Material:
Phosphor Bronze

Plating:
Sn or Au over

50µ" (1,27 µm) Ni

Operating Temp Range:
-55°C to +125°C

RoHS Compliant:
Yes

Processing:
Lead-Free Solderable:

Yes

SMT Lead Coplanarity:
(0,10 mm) .004" max

RECOGNITIONS

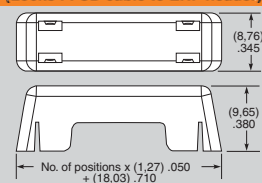
For complete scope of recognitions see www.samtec.com/quality



ALSO AVAILABLE
(MOQ Required)

- Other sizes
- Contact Samtec.

EJECTOR HEADER CAP
(Locks FFSD cable to EHF header)



ECF	NO. PINS PER ROW
	05, 08, 10, 13, 17, 20, 25

***Important Note:**
EHF will not mate to FFSD with strain relief (-SR option), see ESHF series.

Note: Some lengths, styles and options are non-standard, non-returnable.

TYPE STRIP	1	NO. PINS PER ROW	01	PLATING OPTION	D	TAIL STYLE	OTHER OPTION
SHF = Mates with FFSD without Strain Relief		04, 05, 06, 08, 10, 11, 12, 13, 15, 17, 20, 25 (Standard sizes)		-L = 10µ" (0,25 µm) Gold on post, Matte Tin on tail		-TH = Through-hole -RA = Right Angle -SM = Surface Mount	-LC = Locking Clip (Not available with -RA) (Manual placement required) -TR = Tape & Reel Packaging -K = (6,50 mm) .256" DIA Polyimide Film Pick & Place Pad (-SM only)
ESHF = Mates with FFSD with Strain Relief							

TYPE STRIP	A
SHF	No. of pins x (1,27) .050 + (6,35) .250
ESHF	No. of pins x (1,27) .050 + (10,16) .400

EHF	1	NO. PINS PER ROW	01	PLATING OPTION	D	TAIL OPTION	OTHER OPTION
		04, 05, 08, 10, 13, 17, 20, 25 (Standard sizes)		-F = Gold flash on post, Matte Tin on tail -L = 10µ" (0,25 µm) Gold on post, Matte Tin on tail		Leave blank for Through-Hole version -SM = Surface Mount -RA = Right Angle	- "XX" = Polarized Position (-RA not available) -LC = Locking Clip (-SM only) (Manual placement required) -K = (7,50 mm) .295" DIA Polyimide Film Pick & Place Pad -P = Pick & Place Pad (-SM only) -TR = Tape & Reel Packaging (-LC not available)

X-ON Electronics

Largest Supplier of Electrical and Electronic Components

Click to view similar products for [Headers & Wire Housings](#) category:

Click to view products by [Samtec](#) manufacturer:

Other Similar products are found below :

[95000-104TRLF](#) [10135584-644402LF](#) [DF62W-EP2022PCA](#) [95000-106TRLF](#) [DF62W-2022SCA](#) [DF62W-EP2022PC](#) [2203348](#) [DF62W-2022SC](#) [1084018](#) [1029039](#) [1084017](#) [802-10-012-10-002000](#) [1112640](#) [1112639](#) [000-34000](#) [0009482033](#) [0009507031](#) [57102-S06-03LF](#) [57202-S52-04LF](#) [PCN6-15S-2.5E](#) [0039019024](#) [58102-G61-06LF](#) [582553-1](#) [0009485154](#) [0009508121](#) [0022285053](#) [0050291907](#) [018731A](#) [LY20-4P-DT1-P1E-BR](#) [02.125.8002.8](#) [60101931](#) [60598-1 \(Cut Strip\)](#) [M1625-3R/100](#) [61062-3](#) [61082-181009](#) [636-1427](#) [638009-1](#) [641938-9](#) [641991-4](#) [644168-1](#) [647662-1](#) [65039-019ELF](#) [65781-047](#) [65817-002LF](#) [65817-015LF](#) [65863-015LF](#) [66207-023LF](#) [67016-026LF](#) [67046-001LF](#) [67095-007LF](#)