

EK Enclosures

Product presentation

For modular flexibility

Because EK enclosures are fully modular, this range stretches to fit, from a single module to extensive enclosure panels. EK comes in a large size range, with various depths and a host of accessories.

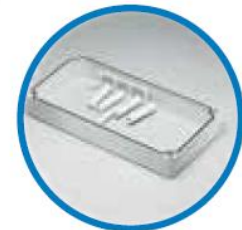
EK is available with flange openings providing several options to use wide selection of accessories or connect enclosures to each other so as to form larger enclosure panel. EK FSH-models include wide opening hinges.



Modular structure for larger enclosure panels



Wide accessory selection



Extension frame multiplies usage options

EK Enclosures

Ideal for single or modular enclosure solutions.
Wide selection and extensive range of accessories.



Enclosure

- 1 Base
- 2 Cover, grey or transparent
- 3 Cover screws, different versions

Accessories

- 4 Fastening lugs, 2 pcs. incl. screws
- 5 Mounting plate, electro-galvanised steel stable and impact-resistant
- 6 DIN rail different sizes TS 35
- 7 Intermediate frame, polycarbonate, (from size 2819) PUR gasket (height 50mm)
- 8 Membrane cable gland for flexible applications

EK Enclosures

Features



High ingress protection – IP 66/67

High impact resistance – IK 08 (side, flange mounted) IK 09 (front)

UV resistance

Good chemical resistance

Sizes from 190x190x130 up to 760x560x250

UL approved

Available with flange openings (metric, membrane)

Covers available in grey and transparent

Screws for mounting plate as well as cover included

Extensive range of accessories

Extension frame multiplies application options

Modular structure for larger enclosure panels

EK Enclosures

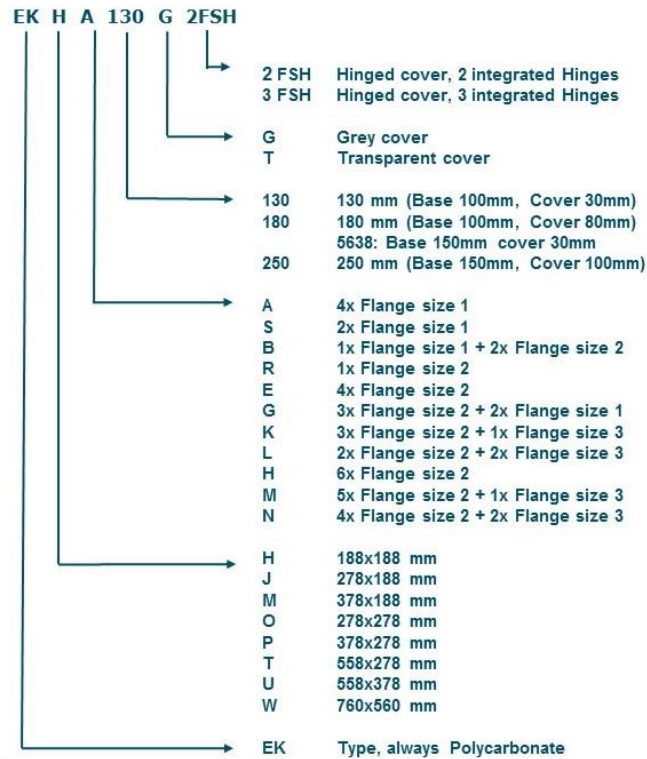
Technical information and approvals

EK technical information		Confirmity to standards
Property	Polycarbonate (PC)	
Ingress Protection (EN 60529)	IP 66/IP 67	USA Enclosures for Electrical Equipment PC: UL Type 1, 3, 3S, 4, 4X, 6, 6P or 12; UL File E75645 Vol 1 Sec 2; UL 746C-5VA flame test (UL 50/508)*
Impact Resistance (EN 62262)	IK 08 (side surface) IK 09 (front surface)	
Température Range Celsius (short term) Fahrenheit	-40°...120°C -40°...250°F	Canada Industrial Control Equipment Enclosures for Electrical Equipment/ULc*
Température Range Celsius (continuous) Fahrenheit	-40°...80°C -40°...175°F	
Electrical Insulation	Totally insulated ☑	Europe Empty enclosures for low-voltage switchgear and controlgear assemblies EN 62208:2003 Europe Safety of Information Technology Equipment EN 60950 RoHS directive 2002/95/EC
Light Grey Parts Colour	RAL 7035 Industry Gray	
Transparent Clear PC Cover	Clear transparent	Russia GostR - Gost Russian certificate of conformity
Cover Screws	RAL 7035	
Cover Screws	Polyamide (PA)	*UL label on request
Gasket	PUR/EPDM	
Enclosure Flammability Rating	UL 746C 5V*	
Glow Wire Test (IEC 695-2-1) Self-extinguishing (PC)	960°C	
Non-toxicity	Halogen Free	
UV resistance	UL 508 720 hours in "Weatherometer"	
Chemical Resistance *	Good	
Data subject to change without notice. ** Consult separate raw material data for more detailed information		

EK Enclosures



Product Key EK



EK Enclosures

Extensive range of accessories

- Mounting plates



- DIN-35 Mounting rails



- Din rail frames



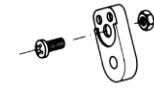
- Extension frames



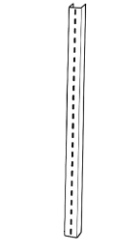
- Front plates with DIN-openings



- Hinges and wall mounting



- Cover screws



- Key-Lock Set



- Metric and Membrane Flanges



- Ect.

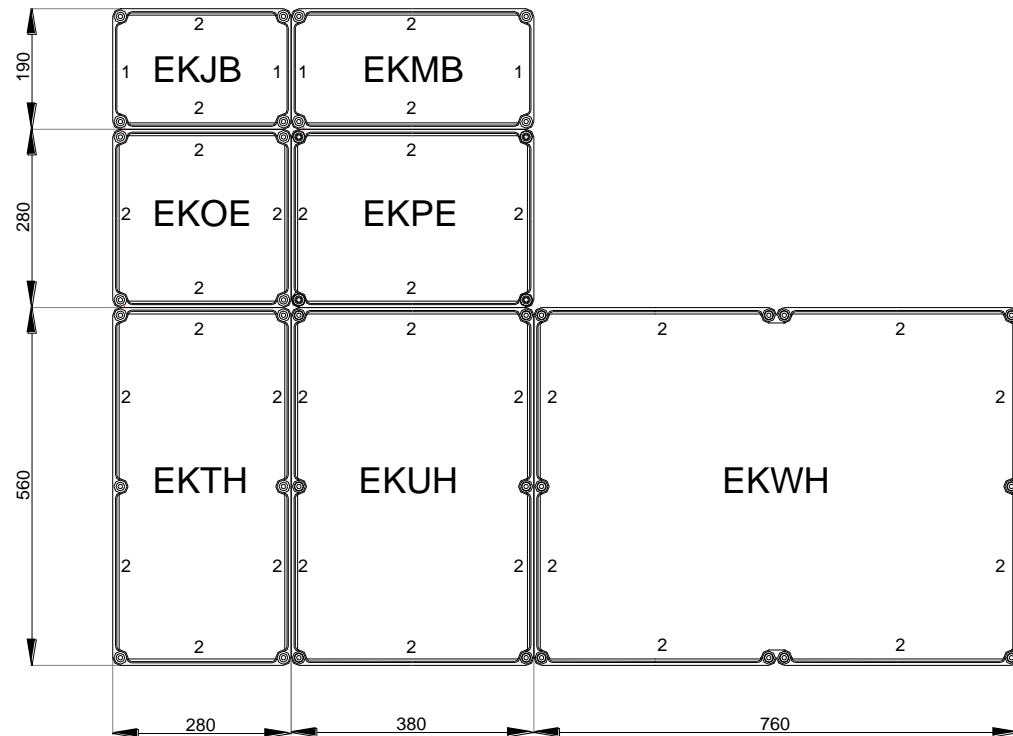


[See EK accessorie-programme](#)

EK Enclosures

Product sizes

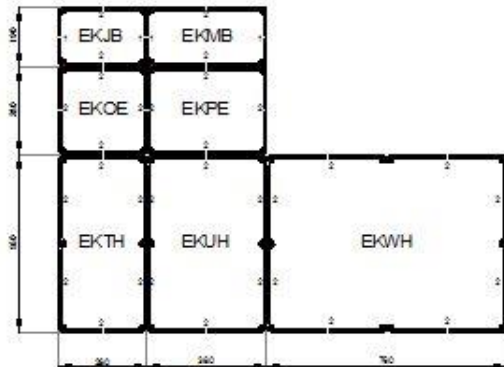
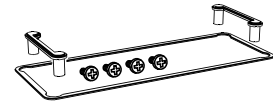
- EKHA: 190x190 mm
- EKMB: 190x380 mm
- EKPE: 380x280 mm
- EKUH: 560x380 mm
- EKJB: 190x280 mm
- EKOE: 280x280 mm
- EKTH: 560x280 mm
- EKWH: 760x560 mm



EK Enclosures

A strong modular system

- Power distribution panels up to 630A
- Connector sets guarantee stability of the modular system
- 3 sizes of flange openings



Opening widths	Connector	Gasket
1	MB 10671	MK 10437
2	MB 10670	MK 10438
3	MB 10672	MK 10439

EK and SOLID Enclosures

Similarities and differences

Features	EK	SOLID
Side flanges	Available - Single housing and modular housing systems	Only smooth sides Single housing
Material	Only PC	PC, ABS
Accessories		Almost the entire EK accessory is also compatible with SOLID housings
Applications		Identical with EK
Certification		Identical with EK

EK and SOLID Enclosures

SOLID and EK – Typical applications



EK and SOLID Enclosures

Learn more:

- www.fibox.com
 - [EK products](#)
 - [EK accessories](#)
- Catalogues:
 - [Fibox Enclosure and Cabinet Overview:](#)
 - [Enclosure catalogue 5.0](#)

X-ON Electronics

Largest Supplier of Electrical and Electronic Components

Click to view similar products for [Mounting Fixings](#) category:

Click to view products by [Fibox](#) manufacturer:

Other Similar products are found below :

[5912235-2](#) [007310](#) [007541](#) [6-141-P](#) [620HA038NF09](#) [620HA038NF11](#) [CTJ420E028-513](#) [M81714/60-12-01](#) [M81714/60-22-01](#) [L/C](#)
[MA1EAF1200](#) [70-584649-01P](#) [71-074914-006](#) [71-215091-8S](#) [712HA170B23128-N](#) [71-344699-4S](#) [71-441549-19S](#) [71-441864-5S](#) [71-](#)
[490451-4H](#) [EX-13-3-B-16-325PN](#) [75-69116-8S](#) [75-69211-3P](#) [75-69220-27S](#) [75-69224-5S](#) [75-69614-2S](#) [770-006A109](#) [770-006A109R](#) [770-](#)
[006A207](#) [770-006A208W1](#) [770-006A209](#) [770-006A306](#) [770-006A703W1](#) [770-006A704](#) [770-006A704W1](#) [770-006A705](#) [770-006A706](#)
[770-006A706W1](#) [770-006A707](#) [770-006A709](#) [770-007A203](#) [770-007A203W1](#) [770-007A204W1](#) [770-007A207W1](#) [770-007A703](#) [770-](#)
[007A704W1](#) [770-007A706](#) [770-007A707W1](#) [770-010Y208](#) [770-010Y308](#) [770-010Y705](#) [770-010Y706](#)