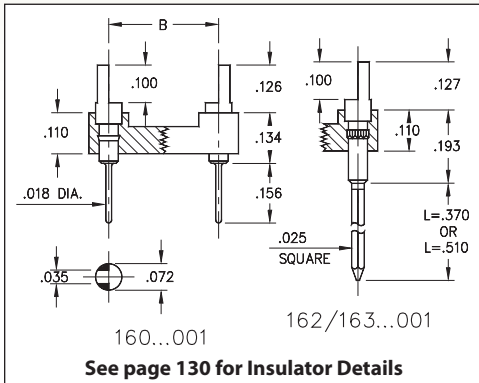
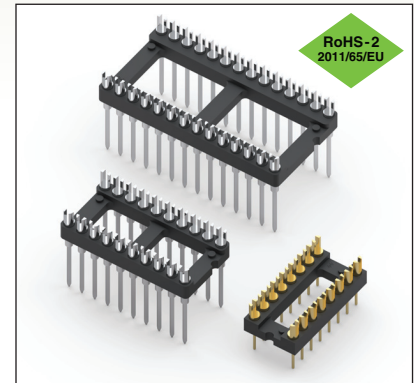


DUAL-IN-LINE HEADERS

SERIES 160, 162, 163 • SLOTTED, SOLDER TAIL & WRAPOST • OPEN FRAME



- Series 160, 162, and 163 DIL Headers are equipped with slotted heads to accept wires or component leads
- Series 160 terminations are pluggable .018" dia. solder tails MM #0282, See page 216 for details. Series 162 and 163 terminations are two or three level wraposts MM #1106. See page 228 for details
- Insulators are high temperature thermoplastic, suitable for all soldering operations
- For Electrical, Mechanical and Environmental Data, see page 264 for details



Total number of pins				Quantity per tube	ORDERING INFORMATION					
	A	B	C		Solder Tail	L = .370 (2 Level Wrapost)	L = .510 (3 Level Wrapost)			
10	0.5	0.2	0.3	41	160-XX-210-00-001000	162-XX-210-00-001000	163-XX-210-00-001000			
4	0.2	0.3	0.4	102	160-XX-304-00-001000	162-XX-304-00-001000	163-XX-304-00-001000			
6	0.3	0.3	0.4	67	160-XX-306-00-001000	162-XX-306-00-001000	163-XX-306-00-001000			
8	0.4	0.3	0.4	50	160-XX-308-00-001000	162-XX-308-00-001000	163-XX-308-00-001000			
10	0.5	0.3	0.4	40	160-XX-310-00-001000	162-XX-310-00-001000	163-XX-310-00-001000			
14	0.7	0.3	0.4	28	160-XX-314-00-001000	162-XX-314-00-001000	163-XX-314-00-001000			
16	0.8	0.3	0.4	25	160-XX-316-00-001000	162-XX-316-00-001000	163-XX-316-00-001000			
18	0.9	0.3	0.4	22	160-XX-318-00-001000	162-XX-318-00-001000	163-XX-318-00-001000			
20	1.0	0.3	0.4	20	160-XX-320-00-001000	162-XX-320-00-001000	163-XX-320-00-001000			
22	1.1	0.3	0.4	18	160-XX-322-00-001000	162-XX-322-00-001000	163-XX-322-00-001000			
24	1.2	0.3	0.4	16	160-XX-324-00-001000	162-XX-324-00-001000	163-XX-324-00-001000			
28	1.4	0.3	0.4	14	160-XX-328-00-001000	162-XX-328-00-001000	163-XX-328-00-001000			
20	1.0	0.4	0.5	20	160-XX-420-00-001000	162-XX-420-00-001000	163-XX-420-00-001000			
22	1.1	0.4	0.5	18	160-XX-422-00-001000	162-XX-422-00-001000	163-XX-422-00-001000			
24	1.2	0.4	0.5	16	160-XX-424-00-001000	162-XX-424-00-001000	163-XX-424-00-001000			
28	1.4	0.4	0.5	14	160-XX-428-00-001000	162-XX-428-00-001000	163-XX-428-00-001000			
32	1.6	0.4	0.5	12	160-XX-432-00-001000	162-XX-432-00-001000	163-XX-432-00-001000			
24	1.2	0.6	0.7	16	160-XX-624-00-001000	162-XX-624-00-001000	163-XX-624-00-001000			
28	1.4	0.6	0.7	14	160-XX-628-00-001000	162-XX-628-00-001000	163-XX-628-00-001000			
32	1.6	0.6	0.7	12	160-XX-632-00-001000	162-XX-632-00-001000	163-XX-632-00-001000			
36	1.8	0.6	0.7	11	160-XX-636-00-001000	162-XX-636-00-001000	163-XX-636-00-001000			
40	2.0	0.6	0.7	10	160-XX-640-00-001000	162-XX-640-00-001000	163-XX-640-00-001000			
42	2.1	0.6	0.7	9	160-XX-642-00-001000	162-XX-642-00-001000	163-XX-642-00-001000			
48	2.4	0.6	0.7	8	160-XX-648-00-001000	162-XX-648-00-001000	163-XX-648-00-001000			
50	2.5	0.6	0.7	8	160-XX-650-00-001000	162-XX-650-00-001000	163-XX-650-00-001000			
52	2.6	0.6	0.7	7	160-XX-652-00-001000	162-XX-652-00-001000	163-XX-652-00-001000			
50	2.5	0.9	1.0	8	160-XX-950-00-001000	162-XX-950-00-001000	163-XX-950-00-001000			
52	2.6	0.9	1.0	7	160-XX-952-00-001000	162-XX-952-00-001000	163-XX-952-00-001000			
64	3.2	0.9	1.0	6	160-XX-964-00-001000	162-XX-964-00-001000	163-XX-964-00-001000			
<div style="border: 1px solid black; border-radius: 50%; padding: 5px; display: inline-block;"> XX=Plating Code See to Right </div>					SPECIFY PLATING CODE XX =		10 ◆	90	40 ◆	
					Pin Plating	10 μ" Au	200 μ" Sn/Pb	200 μ" Sn		



X-ON Electronics

Largest Supplier of Electrical and Electronic Components

Click to view similar products for [Sockets & Adapters](#) category:

Click to view products by [Mill-Max](#) manufacturer:

Other Similar products are found below :

[6508-0-00-01-00-00-33-0](#) [AC164341](#) [AC164348](#) [1262](#) [C8051F350-TB](#) [KITPF0100SKTEVBE](#) [LFVDBJR](#) [SK-AX2-CQ256-KITTOP](#)
[AC164334](#) [AC164353](#) [AC164383](#) [SOCKET-ADM106XTQZ](#) [SPC564A80CAL176](#) [ST5M1267-001](#) [FP3-10PIN-ADAPTER-KIT](#) [CY3675-](#)
[LCC4A](#) [TDGL015](#) [ATF15XXDK3-SAA100](#) [LFBGADATC](#) [SM64TQ-ACTEL-1](#) [SM68P-ACTEL](#) [8.06.03](#) [AC164358](#) [ATSTK600-RC99](#)
[76002056](#) [DS91230+](#) [OM13019,598](#) [09185058](#) [AC164369](#) [AC164409](#) [AC164402](#) [SMPA-ISP-ACTEL-3-KIT](#) [ICESABCM81-01](#) [LFVDBGF](#)
[AC164408](#) [LFBGADAU1A](#) [KIT 70601-3](#) [S5U13U00P00C100](#) [AC164352](#) [PN-Q208/5256V](#) [PN-T100/LC4256](#) [LFBGAINTM55U1QA](#)
[AC164370](#) [AC164355](#) [AC164367](#) [LFDAS12XEFT](#) [CY3675-TSSOP20B](#) [SPC563M64AVB144](#) [ATF15XXDK3-SAA44](#) [AC164410](#)