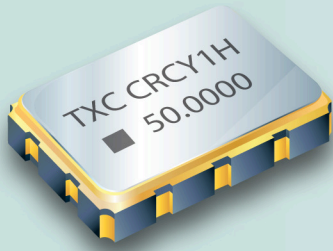


SMD CMOS VCXO - Single End Output 5.0 x 3.2 x 1.2 mm CR Series



Features

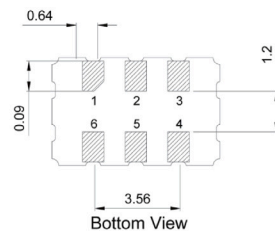
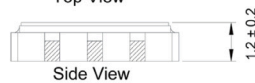
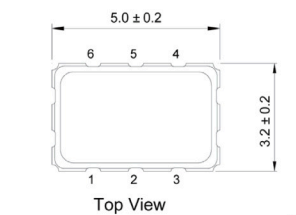
- Voltage Controlled Crystal Oscillator (VCXO).
- Fundamental solution.
- CMOS output, output frequencies 50 MHz to 200 MHz.
- Wide pull range and good linearity.
- Excellent low phase noise and jitter.
- Tri-State function available.
- Main applications : SDH / SONET, Ethernet, Base Stations.
- RoHS Compliant / Pb Free.

Electrical Specifications

| Item / Type | CR |
|-------------------------------------|----------------------------|
| Output Type | CMOS |
| Output Load | 15 pF |
| Oscillation Mode | Fundamental |
| Supply Voltage (VDD) | 3.3 V |
| Frequency Range | 50 ~ 200 MHz |
| Frequency Stability | ± 50 ppm |
| Operating Temperature Range | - 40 ~ + 85 °C |
| Storage Temperature Range | - 55 ~ + 125 °C |
| Voltage Vol (Max.) / Voh (Min.) | 0.1 VDD / 0.9 VDD |
| Rise (Tr) / Fall (Tf) Time | 5 nS Max. |
| Supply Current | 60 mA Max. |
| Symmetry | 45 ~ 55 % |
| Start-up Time | 10 mS Max. |
| Absolute Pulling Range (APR) * | ± 50 ppm Min. , or specify |
| Nominal Control Voltage | 0.5 VDD |
| Control Voltage Range | 0 ~ VDD |
| Linearity | 10 % Max. |
| Phase Jitter (12 KHz ~ 20 MHz) | 1 pS Max. |

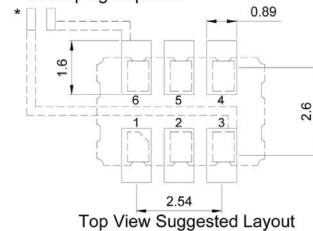
* APR=(Pull Range) - (Frequency tolerance at 25 °C, variation over temperature, supply voltage variation, and aging.)

Dimensions



PAD FUNCTION:
 1: CONTROL VOLTAGE
 2: ENABLE CONTROL or NC
 3: GND
 4: OUT
 5: NC
 6: VDD

* :External high frequency power supply decoupling required.



Units: mm

Remark : Specification subject to change without prior notice. Please confirm with our sales.

X-ON Electronics

Largest Supplier of Electrical and Electronic Components

Click to view similar products for [TCVCXO Oscillators](#) category:

Click to view products by [TXC Corporation](#) manufacturer:

Other Similar products are found below :

[FOX923CH-19.20M](#) [TG-5006CG-12H 26.0000M3](#) [TG-5035CG-13N 19.2000M3](#) [SIT5000ACC8E-33VQ-19.200000X](#) [TG5032SGN](#)
[40.0000M-CBGHNAB](#) [LFTVXO022175Bulk](#) [KT7050A10000KAW33TAD](#) [MAOC-009266-PKG003](#) [ASVTX-09-19.200MHZ-T](#)
[SiT5000AICGE-33E0-25.000000X](#) [LFTVXO075674CUTT](#) [ASVTX-12-C-19.200MHz-I15-T](#) [LFTVXO075803Cutt](#) [LFTVXO076348CUTT](#)
[LFTVXO075802Cutt](#) [LFTVXO076344CUTT](#) [KT2016K40000DAZ18TAV](#) [KT2016K27600ZAW18TCS](#) [LFTVXO076343CUTT](#)
[LFTVXO073010Cutt](#) [LFTVXO072344CUTT](#) [LFTVXO073008Cutt](#) [LFTVXO076347CUTT](#) [LFTVXO076349CUTT](#) [LFTVXO076194CUTT](#)
[ASVTX-09-20.000MHz-T](#) [KT1612A26000ACW28TAN](#) [LFTVXO009901BULK](#) [ASGTX-C-100.000MHz-1](#) [ASGTX-C-120.000MHz-1](#)
[ASGTX-D-100.000MHz-1](#) [ASGTX-D-1.000GHz-1](#) [ASGTX-D-125.000MHz-1](#) [ASGTX-D-500.000MHz-1](#) [ASGTX-P-1.000GHz-1](#) [ASGTX-](#)
[P-1.500GHz-1](#) [ASGTX-P-500.000MHz-2](#) [ASGTX-D-1.000GHZ-2](#) [ASVTX-09-14.400MHZ-T](#) [ASVTX-09-16.000MHZ-T](#) [ASVTX-09-](#)
[16.800MHZ-T](#) [ASVTX-11-A-38.400MHz-T](#) [ASVTX-12-A-19.200MHZ-H10-T](#) [ASVTX-12-D-16.369MHz-I05-T](#) [ASVTX-12-D-19.200MHz-](#)
[I05-T](#) [ASVTX-13-C-16.369MHz-I05-T](#) [ASVTX-13-C-19.200MHz-I05-T](#) [ASVTX-13-C-26.000MHz-I05-T](#) [ASVTX-13-C-26.000MHz-I15-T](#)
[ASVTX-13-C-32.000MHz-I15-T](#)