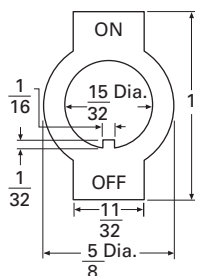
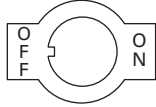
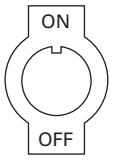
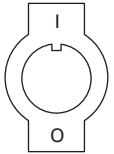


# Toggle switch accessories

**Table 1. Indicating Plates for 15/32-Inch Bushing-Mounted Switches**

Keyway Location	Marking		Material	Finish	Part Number	
	Opposite Keyway	Keyway Side				
Keyway on bottom 	ON	OFF	0.032 inch steel	Plain	<b>30-5632</b>	
			0.032 inch steel	Statuary bronze	<b>30-5632-3</b>	
			0.032 inch steel	Burnished nickel	<b>30-5632-4</b>	
			0.032 inch brass	Black cupric oxide ①	<b>30-2899-3</b>	
	RAD	PHO	0.032 inch steel	Statuary bronze	<b>30-5632-7</b>	
			0.032 inch steel	Burnished nickel	<b>30-5632-6</b>	
	RUN	START	0.032 inch steel	Burnished nickel	<b>30-5632-11</b>	
	HOT	COLD	0.032 inch steel	Burnished nickel	<b>30-5632-15</b>	
	HI	LOW	0.032 inch steel	Burnished nickel	<b>30-5632-16</b>	
	ON	STOP	0.032 inch steel	Burnished nickel	<b>30-5632-17</b>	
	FOR	REV	0.032 inch steel	Burnished nickel	<b>30-2899-2</b>	
	AUTO	TEST	0.032 inch steel	Burnished nickel	<b>30-2899-6</b>	
	PUSH	START	0.032 inch steel	Burnished nickel	<b>30-2899-7</b>	
	RUN	TEST	0.032 inch steel	Burnished nickel	<b>30-2899-9</b>	
	BLANK	BLANK	0.032 inch steel	Plain	<b>30-5632-5</b>	
			0.032 inch steel	Burnished nickel	<b>30-5632-8</b>	
			0.032 inch brass	Brushed	<b>30-5632-9</b>	
	Keyway on side 	ON	OFF	0.032 inch steel	Burnished nickel	<b>30-5632-13</b>
		OFF	ON	0.032 inch steel	Burnished nickel	<b>30-2899-8</b>
Keyway on top 	T	B	0.032 inch steel	Burnished nickel	<b>30-5632-12</b>	
	OFF	ON	0.032 inch steel	Burnished nickel	<b>30-5632-14</b>	
	SET	RUN	0.032 inch steel	Burnished nickel	<b>30-2899-10</b>	
	BLANK	RESET	0.032 inch steel	Burnished nickel	<b>30-2899-12</b>	
Keyway on top 	O	I	0.032 inch steel	Burnished nickel	<b>30-5632-23</b>	
	I	O	0.032 inch steel	Burnished nickel	<b>30-5632-19</b>	

① White lettering.



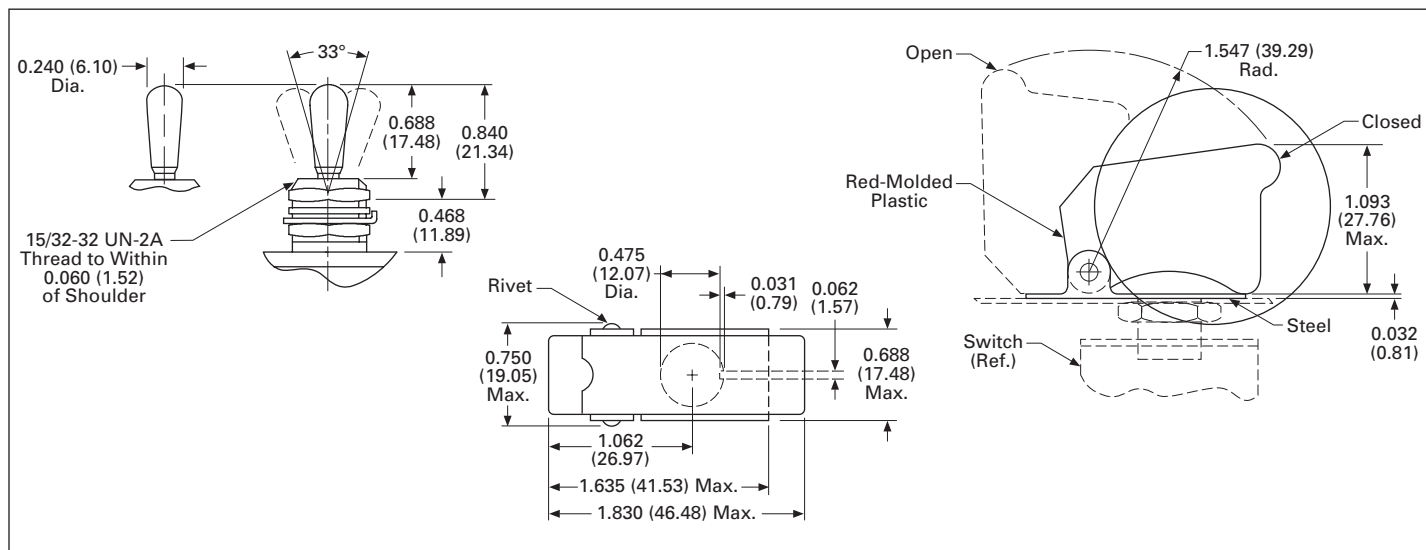
Powering Business Worldwide

Effective February 2013

**Table 2. Switch Guards** ①

Switch Positions	Keyway Location	Mounting	Catalog Number
2	Opposite hinged end	OHM	E10TA104

① Red phenolic lever material.



**Figure 1. Switch Guard—Approximate Dimensions in Inches (mm)**

**Table 3. Mounting Hardware for One-Hole Mounting Switches—Dimensions in mm (Inches)** ①②

Size	Description	Material	Thickness (Dim. A)	Inside Diameter (Dim. B)	O.D. or Dim. Across Flats (Dim. C)	Dim. Across Corners (Dim. D)	Catalog Number
<b>Mounting Nuts</b>							
15/32-32	Hexagon locknut	Zinc-chromate treated	1.91 (0.075)	—	15.88 (0.625)	—	<b>15-192</b>
		Bright nickel-plated brass	1.98 (0.078)	—	13.87 (0.546)	15.88 (0.625)	<b>15-2525-58</b>
		Nickel-plated brass	1.98 (0.078)	—	13.87 (0.546)	15.88 (0.625)	<b>15-2525-59</b>
		Zinc-chromate treated	4.76 (0.188)	19.89 (0.783)	25.80 (1.125)	—	<b>15-2528-2</b>
	Hexagon facenut	Nickel-plated brass	1.98 (0.078)	—	14.27 (0.562)	16.66 (0.656)	<b>15-966-2</b>
		Semi-lustre nickel-plated brass	1.98 (0.078)	—	14.27 (0.562)	16.66 (0.656)	<b>19-966-6</b>
	Knurled facenut	Bright nickel-plated brass	1.68 (0.066)	14.27 (0.562)	14.27 (0.562)	—	<b>15-124F1</b>
		Black cupric oxide-plated brass	1.68 (0.066)	14.27 (0.562)	14.27 (0.562)	—	<b>15-124F5</b>
		Nickel-plated brass	2.77 (0.109)	15.88 (0.625)	15.88 (0.625)	—	<b>15-90</b>
	Chamfered dress nut	Bright nickel-plated brass	3.84 (0.151)	7.92 (0.312)	17.45 (0.687)	—	<b>15-994-2</b>
Standard knurl nut with shoulder	Nickel-plated brass	2.77 (0.109)	—	15.06 (0.593)	—	<b>15-2534-14</b>	
Dress nut	Satin chrome-plated brass	3.18 (0.125)	—	14.27 (0.562)	—	<b>15-2523-4</b>	
	Black nylon	4.75 (0.187)	9.91 (0.390)	16.26 (0.640)	—	<b>15-1048-3</b>	
Knurled dress nut	Chrome-plated brass	4.75 (0.187)	7.92 (0.312)	16.26 (0.640)	—	<b>15-189-5</b>	
<b>Mounting Washers and Locking Ring</b>							
For 15/32 bushing	Plain washer	Cadmium-plated steel	0.79 (0.031)	12.29 (0.484)	19.05 (0.750)	—	<b>16-1382</b>
	Internal tooth lockwasher	Trivalent zinc-plated steel	0.53 (0.021)	11.96 (0.471)	15.06 (0.593)	—	<b>16-3557</b>
	Locking ring	Zinc-plated steel	1.02 (0.040)	12.07 (0.475)	18.24 (0.718)	—	<b>29-761-5</b>

① Hardware items are sold for use with Eaton switches only. Minimum ordering quantity on all items is 100. All bushing-mounted switches are furnished with two mounting nuts. One nut is mounted behind the panel to prevent the bushing sleeve from being distorted if the front panel is overtightened. Eaton accepts no responsibility for damage to switches mounted without the backup nuts.

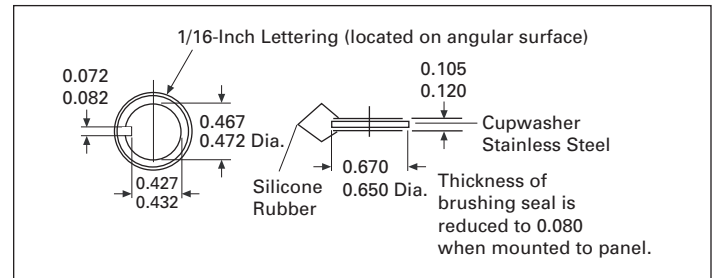
② Refer to **Table 4** for dimensional diagrams.

**Table 4. Dimensions—Approximate in mm (Inches)**

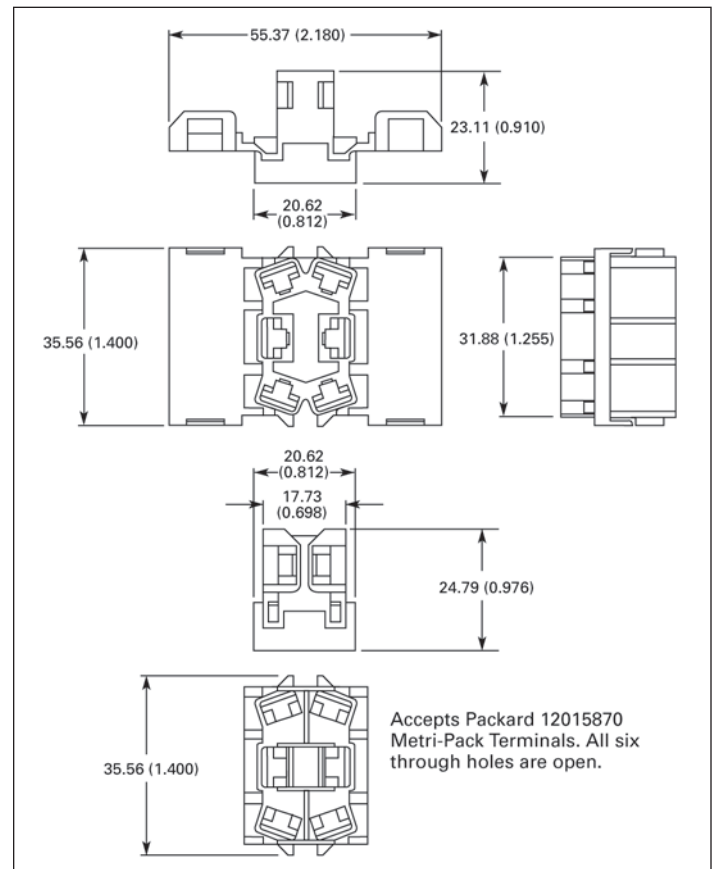
<p>Hexagon Locknuts or Facenuts</p>	<p>Knurled Dress Nut Catalog Number <b>15-1048-3</b></p>
<p>Knurled Facenut</p>	<p>Dress Nut Catalog Number <b>15-2523-4</b></p>
<p>Knurled Nut with Shoulder</p>	<p>Plain Washer</p>
<p>Chamfered Dress Nut Catalog Number <b>15-994-2</b></p>	<p>Internal Tooth Lockwasher</p>
<p>Knurled Dress Nut Catalog Number <b>15-189-5</b></p>	<p>Locking Ring</p>

**Panel seal**

- Prevents moisture and contaminants from entering panel enclosure
- Behind panel mounting
- Stainless steel cup washer ensures proper seating of silicone rubber seal
- Seal withstands 20 psi water pressure
- Catalog Number 32-341



**Figure 2. Panel Seal—Dimensions in Inches**



**Figure 3. Two-Pole Base Connector, Catalog Number 28-3426—Dimensions in mm (Inches)**

**Eaton Corporation**  
Electrical Sector  
1111 Superior Avenue  
Cleveland, OH 44114 USA  
Eaton.com

© 2013 Eaton Corporation  
All Rights Reserved  
Printed in USA  
Publication No. TD07002001E / Z13275  
February 2013



Eaton is a registered trademark  
of Eaton Corporation.

All other trademarks are property  
of their respective owners.

## X-ON Electronics

Largest Supplier of Electrical and Electronic Components

*Click to view similar products for [Switch Accessories](#) category:*

*Click to view products by [Eaton](#) manufacturer:*

Other Similar products are found below :

[896809000](#) [01500](#) [01010](#) [01501](#) [7101MD9V30B](#) [7103KZBE](#) [7103P3YAVGE](#) [7209MD9ABE](#) [7209SY9AQE](#) [7209SYCBE](#) [7303KZQE](#)  
[F1302](#) [F1403](#) [760201000](#) [764300000](#) [785105000](#) [785106000](#) [789009000](#) [7T0062](#) [7T0073](#) [MJ1216](#) [MJ33](#) [MJ612](#) [849PT01A](#)  
[91321314655637182-1-MEV](#) [A0107X](#) [A0141A](#) [A0141E](#) [A0142M2SP](#) [A0142N5](#) [A0143G](#) [A0143H](#) [A0161G](#) [A0162A](#) [A0162F](#) [A019307](#)  
[A01RTC8](#) [A0214X](#) [A0215X](#) [A02504](#) [A02512](#) [A0261A](#) [A0263D](#) [A029303](#) [A02MXB](#) [A168P1](#) [A274](#) [A3A-7310](#) [A3PA571124E](#) [A466](#)