

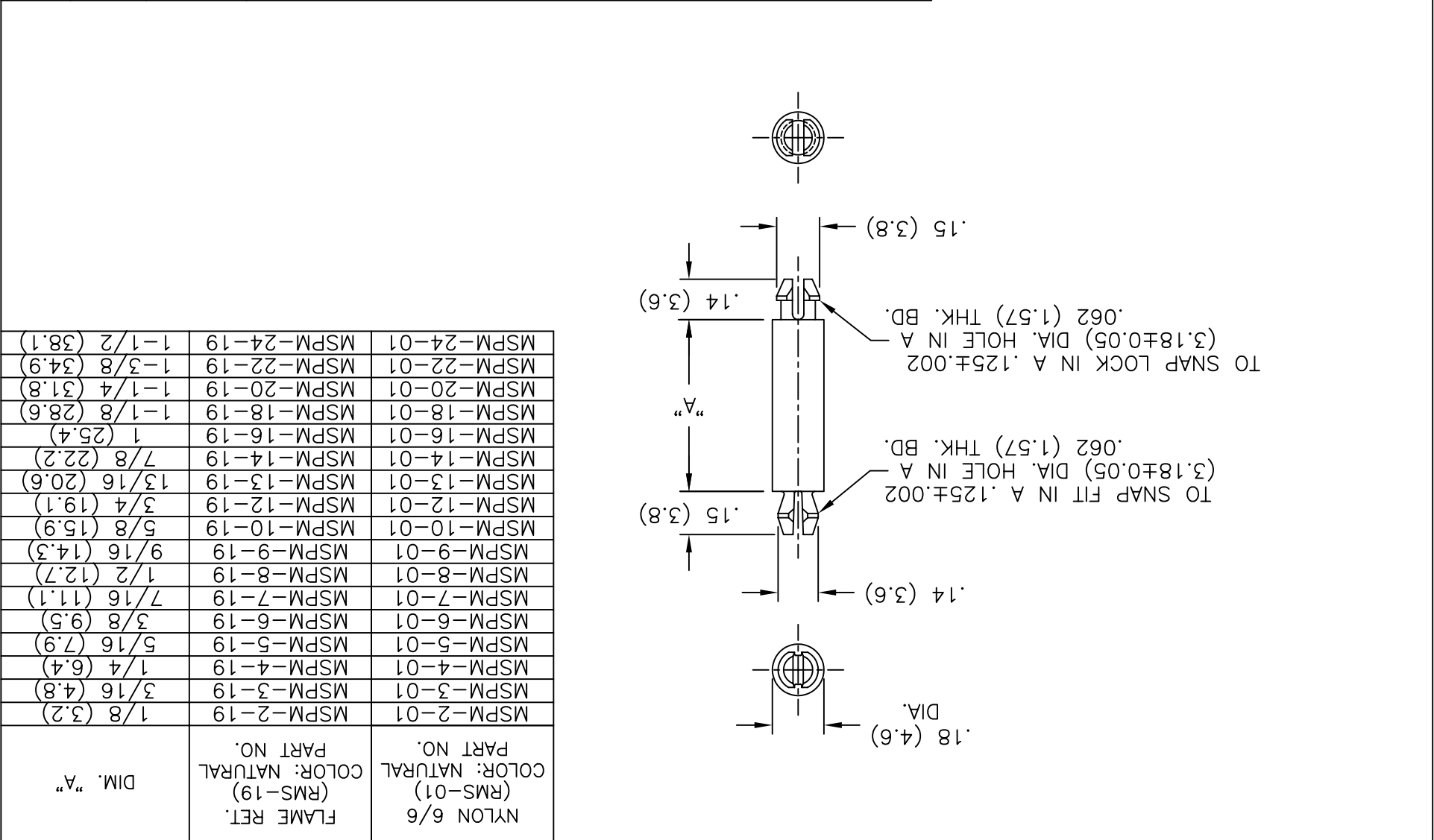
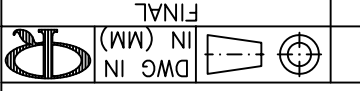
REV	DESCRIPTION	ENGR DATE
A	ADDED -9 PART NO.	JB 04.19.96
B	ADDED -13 PART NO.	RT 11.06.96
C	MAT'L RMS-19 ADDED	J.L. 12.29.97
D	TOP VIEW ADDED	J.L. 12.8.98
E	REMOVED NOTES; ADDED COLUMN "-19" AND CHANGED FILE NO.	SM 08.15.02

TOLERANCES  
UNLESS NOTED  
.XX=±.010  
.XXX=±.005  
FRAC=1/64  
ANG=±1°

FILE # MSPM  
MAT'L: SEE TABLE  
RE: RICHCO, INC.

DWN: P.B.  
APP:  
DT: 03-11-94 DT:  
RICHCO INC.  
PO BOX 804238, CHICAGO, 60680  
(773) 539-4060

PART #  
MSPM-SERIES  
PRINT TYPE  
CA



MSPM-2-01	MSPM-2-19	1/8 (3.2)
MSPM-3-01	MSPM-3-19	3/16 (4.8)
MSPM-4-01	MSPM-4-19	1/4 (6.4)
MSPM-5-01	MSPM-5-19	5/16 (7.9)
MSPM-6-01	MSPM-6-19	3/8 (9.5)
MSPM-7-01	MSPM-7-19	7/16 (11.1)
MSPM-8-01	MSPM-8-19	1/2 (12.7)
MSPM-9-01	MSPM-9-19	9/16 (14.3)
MSPM-10-01	MSPM-10-19	5/8 (15.9)
MSPM-12-01	MSPM-12-19	3/4 (19.1)
MSPM-13-01	MSPM-13-19	13/16 (20.6)
MSPM-14-01	MSPM-14-19	7/8 (22.2)
MSPM-16-01	MSPM-16-19	1 (25.4)
MSPM-18-01	MSPM-18-19	1-1/8 (28.6)
MSPM-20-01	MSPM-20-19	1-1/4 (31.8)
MSPM-22-01	MSPM-22-19	1-3/8 (34.9)
MSPM-24-01	MSPM-24-19	1-1/2 (38.1)

NYLON 6/6  
COLOR: NATURAL  
(RMS-01)  
PART NO.

FLAME RET.  
(RMS-19)  
COLOR: NATURAL  
PART NO.

DIM. "A"

TITLE: MINI SUPPORT POST, MICRO

DWG IN (MM) FINAL

PART #

MSPM-SERIES

PRINT TYPE  
CA

## X-ON Electronics

Largest Supplier of Electrical and Electronic Components

*Click to view similar products for [Headers & Wire Housings](#) category:*

*Click to view products by [Richco](#) manufacturer:*

Other Similar products are found below :

[95000-104TRLF](#) [10135584-644402LF](#) [DF62W-EP2022PCA](#) [95000-106TRLF](#) [DF62W-2022SCA](#) [DF62W-EP2022PC](#) [2203348](#) [DF62W-2022SC](#) [1084018](#) [1029039](#) [1084017](#) [802-10-012-10-002000](#) [1112640](#) [1112639](#) [000-34000](#) [0009482033](#) [0009507031](#) [57102-S06-03LF](#) [57202-S52-04LF](#) [PCN6-15S-2.5E](#) [0039019024](#) [58102-G61-06LF](#) [582553-1](#) [0009485154](#) [0009508121](#) [0022285053](#) [0050291907](#) [018731A](#) [LY20-4P-DT1-P1E-BR](#) [02.125.8002.8](#) [60101931](#) [60598-1 \(Cut Strip\)](#) [M1625-3R/100](#) [61062-3](#) [61082-181009](#) [636-1427](#) [638009-1](#) [641938-9](#) [641991-4](#) [644168-1](#) [647662-1](#) [65039-019ELF](#) [65817-002LF](#) [65817-015LF](#) [65863-015LF](#) [66207-023LF](#) [67016-026LF](#) [67046-001LF](#) [67095-007LF](#) [67230-005LF](#)