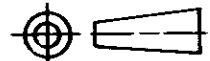


DO NOT SCALE

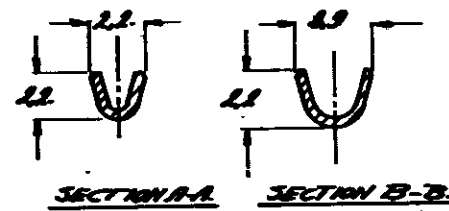
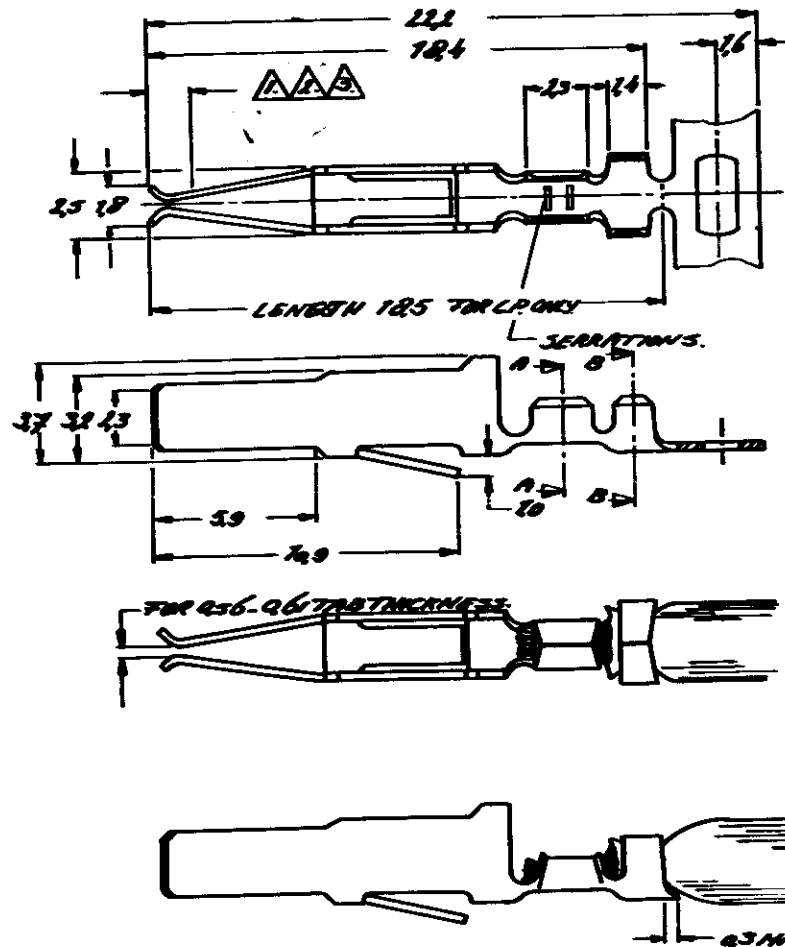
DIMENSIONS IN mm

METRIC

THIRD ANGLE PROJECTION



LTR	REVISION RECORD	DATE	DWN	APVD
D	REVISED PER ECO-15-005333	08JUL2015	AP	RP



FOR REFERENCE ONLY
WILL NOT BE UP - DATED

- NOTES:**
- ▲ EIC 60603-2 PERFORMANCE LEVEL I OVER 1.25µm NICKEL, REMAINDER 1.25µm NICKEL.
 - ▲ EIC 60603-2 PERFORMANCE LEVEL II OVER 1.25µm NICKEL, REMAINDER 1.25µm NICKEL.
 - ▲ EIC 60603-2 PERFORMANCE LEVEL III OVER 1.25µm NICKEL, REMAINDER 1.25µm NICKEL.

16632-3.	SEE NOTE A	P.H. BRONZE	16646-4.
16632-2.	SEE NOTE A	P.H. BRONZE	16646-3.
16632-1.	SEE NOTE A	P.H. BRONZE	16646-2.
LOOSE PIECE.	FINISH	MATERIAL	PART NUMBER
CUSTOMER DRAWING	STE TE Connectivity		
FOR REFERENCE ONLY WILL NOT BE UPDATED	THIS DRAWING IS UNPUBLISHED / RELEASED FOR PUBLICATION		
	© COPYRIGHT IS BY AMP-HOLLAND B.V. ALL INTERNATIONAL RIGHTS RESERVED. AMP PRODUCTS MAY BE COVERED BY U.S. AND FOREIGN PATENTS AND/OR PATE. ITS PENDING.		
DR. <i>TR. Huisman 12-3-83</i>	WIRE RANGE 0.2-0.5 mm	NAME CRIMP ON / SNAP-IN	REV. DATE D M Y
CHK. <i>[Signature]</i>	WIRE RANGE 0.2 - 1.0 mm	TAB RECEPTACLE STRIP	A 05 83
REV. <i>[Signature]</i>	SIZE AS	SHEET 1 OF 1	REV. LTR. D
	DRAWING NO C-166460-E		

8 7 6 5 4 3 2 1

X-ON Electronics

Largest Supplier of Electrical and Electronic Components

Click to view similar products for [DIN 41612 Connectors](#) category:

Click to view products by [TE Connectivity](#) manufacturer:

Other Similar products are found below :

[09231126901](#) [PCN10F-24P-2.54DS\(72\)](#) [004.767](#) [02221602702](#) [024069](#) [602427301412000](#) [013275](#) [691327-1](#) [74670-0732](#) [74680-0340](#)
[75880-0015](#) [76453-0014](#) [86093159ALF](#) [923454](#) [QLC260R](#) [120X10099X](#) [120X10019X](#) [120X10089X](#) [120X10129X](#) [121A10039X](#)
[121A10309X](#) [122A10019X](#) [122A10029X](#) [122A10249X](#) [122A10669X](#) [122A11089X](#) [122A13089X](#) [121B10409X](#) [122A10089X](#)
[122A10129X](#) [122A10349X](#) [122A13359X](#) [1377391-4](#) [DIN-048CPC-SR1-MH](#) [1393583-2](#) [1393726-7](#) [140X10059X](#) [140X10129X](#) [143-1913-](#)
[000](#) [143-1908-000](#) [1484472-1](#) [173052](#) [2110070-1](#) [2110070-2](#) [CBC20T00-008FDS5-0-1-002VR](#) [983-0SE12-12P6](#) [17041102202](#) [172699-](#)
[5036](#) [173051](#) [20 8457096 010 025](#)