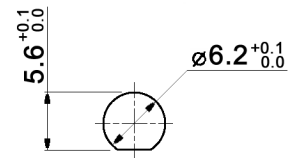


**PANEL MOUNTING**



**CONTACT ARRANGEMENT**

code for x	function	toggle towards keyway	toggle opposite to keyway
N	On-On	1-2, 4-5, 7-8, 10-11	2-3, 5-6, 8-9, 11-12
R	Mom-On		

code for x	function	toggle towards keyway	toggle in center	toggle opposite to keyway
P	On-Off-On			
S	Mom-Off-Mom	1-2, 4-5, 7-8, 10-11	open	2-3, 5-6, 8-9, 11-12
T	Mom-Off-On			
PA	On-On-On			
SA	Mom-On-Mom	1-2, 4-5, 7-8, 10-11	2-3, 4-5, 7-8, 11-12	2-3, 5-6, 8-9, 11-12
TA	Mom-On-On			

**Specifications:**

- Contact rating:** 3A, 250V AC / 6A, 125V AC  
 4A, 30V DC / 5A, 12V DC  
 6A, 6V DC
- Contact resistance:** 20mOhm max.
- Insulation resistance:** 1 000MOhm min. at 500V DC
- Dielectric strength:** 1 500V, 50Hz for the duration of 1 minute
- Operating temperature:** -45°C to +140°C
- Mechanical life:** min. 200 000 cycles (SA, TA: 100 000 cycles)
- Soldering conditions:** hand-soldering: max.: 420°C, 3sec., 60W  
 auto-soldering: max.: 270°C, 5sec.
- Mounting instruction:** max. torque: 49Ncm
- Material:** Terminal: brass, C1020 silver plated  
 Case: DAP  
 Housing: stainless steel, CNS9265  
 Bushing: copper alloy, C3604BD nickel plated  
 Actuator: copper alloy, C3604BD chrome plated
- Included accessories:** 1 pc. nut M6x0.75, nickel plated, 9mm wrench size  
 1 pc. tooth washer  
 1 pc. O-ring
- Sealing:** IP 67



Tolerances: 0.00: ±0.25mm 0.0: ±0.40mm	Date	Name	<b>MTE 406 x</b>	<b>30 19 59</b>	Page
	11/09	dr			
Dimension	01/11	dr	<b>knitter-switch</b>	<b>30 19 59</b>	
Sealing	12/10	dr			
Modifications	Date	Name			

## X-ON Electronics

Largest Supplier of Electrical and Electronic Components

*Click to view similar products for [Toggle Switches](#) category:*

*Click to view products by [Knitter-Switch](#) manufacturer:*

Other Similar products are found below :

[8A1-C-222](#) [60012L](#) [6006L](#) [6663](#) [7101MD9V30GE](#) [7101SPDV30BE](#) [7103SDV30BE](#) [7105D](#) [7108P3YAV2BE](#) [71YY50282](#)  
[7201MD9AVBE](#) [7301K38](#) [7306K36](#) [7310K36](#) [7314K36](#) [7506K4](#) [7592K6](#) [7691K14](#) [7700K1](#) [8396K108](#) [8824K14](#) [8828K13](#) [G2VX](#) [G3VX](#)  
[PS83-121G](#) [A101MD9AB04](#) [A101SD9AB04](#) [A101SDCQ04](#) [A103SD9AQ04](#) [A107TZB04](#) [A123P32YZQ](#) [A123S1YZG](#) [A127S1YCQ](#) [1-](#)  
[1825192-0](#) [A131S1YZQ](#) [A201SCWZB04](#) [A207SYCB04](#) [A208J61ZQ0004](#) [A221K12KAG](#) [A221S1YZQ](#) [A221T1TCQ](#) [A232K12KZQ](#)  
[A232M1YCQ](#) [A323S1CWZQ](#) [A423S1CWZG-M8](#) [A423S1YZQ](#) [12149A-3V](#) [12156AX408](#) [12147AGKX679](#) [12149AD2G0383VX408](#)