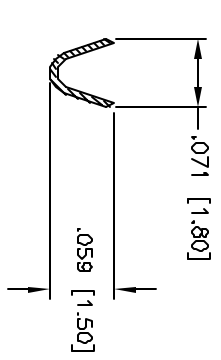
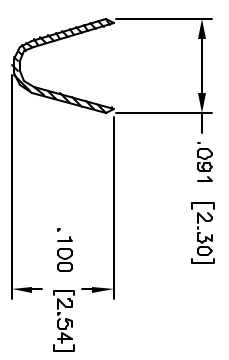
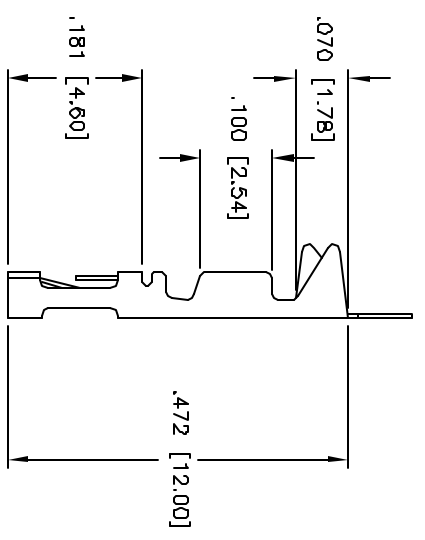
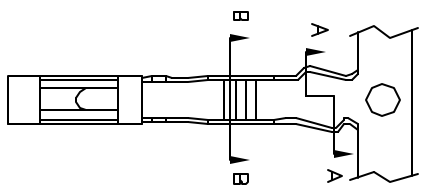


Rev	AWG #	Description	Date	Appr
-		RELEASED	4/7/05	

APPROVED: _____
 DATE: _____ TITLE: _____



SECTION B-B

SECTION A-A

SPECIFICATIONS:

Material: Phosphor Bronze
 Plating: Gold flash over Nickel underplate, Tin over Copper underplate on crimp area
 Electrical:
 Operating voltage: 250 VAC max
 Wire range: 22-28 AWG
 Current rating: 3 Amps max
 Contact resistance: 20 mohms max
 Temperature Rating:
 Operating temperature: -65°C to +105°C
 Packaging:
 R = 6,000 piece reel
 B = 1,000 pieces loose cut
 Environmental:
 Lead free, RoHS compliant



UNLESS OTHERWISE SPECIFIED ALL DIMENSIONS ARE INCHES [MM] TOLERANCES: EXCEPT AS NOTED	
INCHES	HILES
.XX ± .010	ØXX ± .010
.XX ± .020	ØXXX ± .010
.XXX ± .015	ØXXX ± .010
APPROVALS	DATE
DRAWN SS	4/7/05
CHECKED	
APPROVED	

ADAM TECH
 909 Rahway Avenue, Union, NJ 07083
 Phone: 908-687-5000 Fax: 908-687-5710

TITLE		SIZE	PART NO.	SCALE	SHEET	OF
CRIMP CONTACT		X	MTEC-X	NIB	1	1
REV.						

X-ON Electronics

Largest Supplier of Electrical and Electronic Components

Click to view similar products for [Headers & Wire Housings](#) category:

Click to view products by [Adam](#) manufacturer:

Other Similar products are found below :

[95000-104TRLF](#) [10135584-644402LF](#) [DF62W-EP2022PCA](#) [95000-106TRLF](#) [DF62W-2022SCA](#) [DF62W-EP2022PC](#) [2203348](#) [DF62W-2022SC](#) [1084018](#) [1029039](#) [1084017](#) [802-10-012-10-002000](#) [1112640](#) [1112639](#) [891-007-9SS-BST1T](#) [000-34000](#) [0008550134](#) [0009482033](#) [0009507031](#) [57102-F02-18ULF](#) [57102-S06-03LF](#) [57202-S52-04LF](#) [PCN6-15S-2.5E](#) [0039019024](#) [58102-G61-06LF](#) [582553-1](#) [0009485154](#) [0009508121](#) [0022285053](#) [0050291907](#) [018731A](#) [LY20-4P-DT1-P1E-BR](#) [02.125.8002.8](#) [60101931](#) [60598-1 \(Cut Strip\)](#) [M1625-3R/100](#) [61062-3](#) [61082-181009](#) [CSU011177004](#) [636-1427](#) [638009-1](#) [641938-9](#) [641991-4](#) [644168-1](#) [644827-2](#) [647662-1](#) [65039-019ELF](#) [65692-001LF](#) [65781-018](#) [65781-047](#)