

CONTACT ARRANGEMENT

| code for x | function | toggle towards keyway | toggle opposite to keyway | actuation force typically |
|------------|----------|-----------------------|---------------------------|---------------------------|
| N | On-On | 1-2, 4-5 | 2-3, 5-6 | 2N +/- 1N |
| R | Mom-On | 1-2, 4-5 | 2-3, 5-6 | 2N +/- 1N |

| code for x | function | toggle towards keyway | toggle in center | toggle opposite to keyway | actuation force typically |
|------------|-------------|-----------------------|------------------|---------------------------|---------------------------|
| P | On-Off-On | 1-2, 4-5 | open | 2-3, 5-6 | 4N +/- 1N |
| S | Mom-Off-Mom | | | | |
| T | Mom-Off-On | | | | |
| PA | On-On-On | 1-2, 4-5 | 2-3, 4-5 | 2-3, 5-6 | 4N +/- 1N |
| SA | Mom-On-Mom | | | | |
| TA | Mom-On-On | | | | |

Specifications:

Contact rating: 3A, 250V AC / 6A, 125V AC
 4A, 30V DC / 5A, 12V DC
 6A, 6V DC

Contact resistance: 20mOhm max.

Insulation resistance: 1 000MOhm min. at 500V DC

Dielectric strength: 1 500V, 50Hz for the duration of 1 minute

Operating temperature: -45°C to +140°C

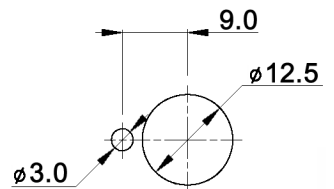
Mechanical life: min. 200 000 cycles (SA, TA: 100 000 cycles)

Soldering conditions: hand-soldering: max.: 420°C, 3sec., 60W
 auto-soldering: max.: 270°C, 5sec.

Mounting instruction: max. torque: 137Ncm

Material: Terminal / contact: brass, silver plated
 Case: DAP
 Housing: stainless steel, CNS9265
 Bushing: copper alloy, C3604BD nickel plated
 Actuator: copper alloy, C3604BD chrome plated

PANEL MOUNTING



Included accessories: 2 pcs. nut 15/32-32, nickel plated, 14mm wrench size
 1 pc. tooth washer
 1 pc. locking washer



| | | | | | |
|---|-------|------|-----------------------|-----------------|------|
| Tolerances: 0.00: ±0.25mm 0.0: ±0.40mm | Date | Name | MTG 206 x | 30 18 02 | Page |
| | 04/09 | dr | | | |
| | | | | | |
| | | | | | |
| | | | | | |
| | | | knitter-switch | | 1/1 |
| Contact arrangement | 07/10 | dr | | | |
| Modifications | Date | Name | | | |

X-ON Electronics

Largest Supplier of Electrical and Electronic Components

Click to view similar products for [Toggle Switches](#) category:

Click to view products by [Knitter-Switch](#) manufacturer:

Other Similar products are found below :

[A19HV](#) [8A1-C-222](#) [60012L](#) [6006L](#) [6663](#) [7101MD9V30GE](#) [7101SPDV30BE](#) [7103SDV30BE](#) [7105D](#) [7108P3YAV2BE](#) [71YY50282](#)
[7201MD9AVBE](#) [7301K38](#) [7306K36](#) [7310K36](#) [7314K36](#) [7506K4](#) [7592K6](#) [7691K14](#) [7700K1](#) [8396K108](#) [8824K14](#) [8828K13](#) [G2VX](#) [G3VX](#)
[PS83-121G](#) [A101MD9AB04](#) [A101SD9AB04](#) [A101SDCQ04](#) [A103SD9AQ04](#) [A107TZB04](#) [A123P32YZQ](#) [A123S1YZG](#) [A127S1YCQ](#) [1-](#)
[1825192-0](#) [A131S1YZQ](#) [A201SCWZB04](#) [A207SYCB04](#) [A208J61ZQ0004](#) [A221K12KAG](#) [A221S1YZQ](#) [A221T1TCQ](#) [A232K12KZQ](#)
[A232M1YCQ](#) [A323S1CWZQ](#) [A423S1CWZG-M8](#) [A423S1YZQ](#) [12149A-3V](#) [12156AX408](#) [12147AGKX679](#)