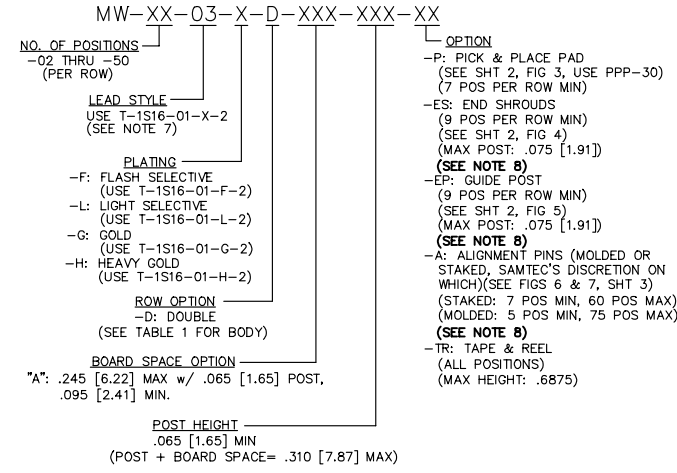
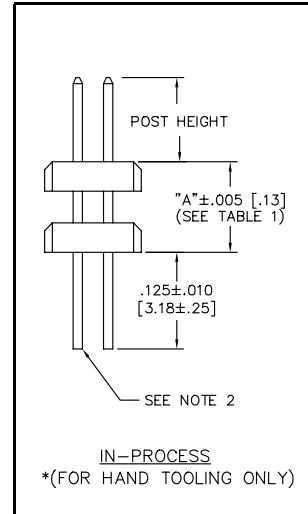
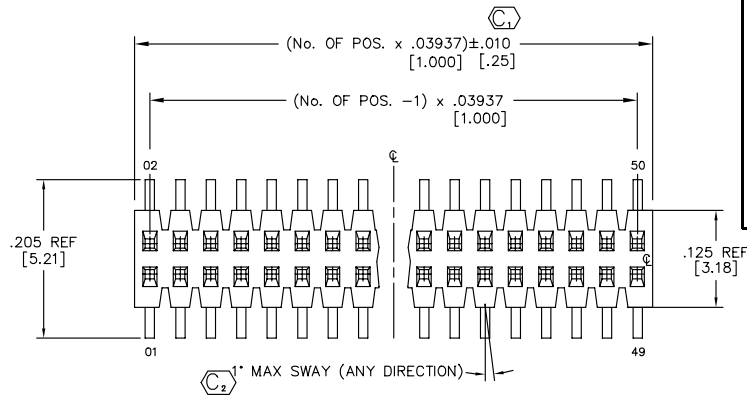
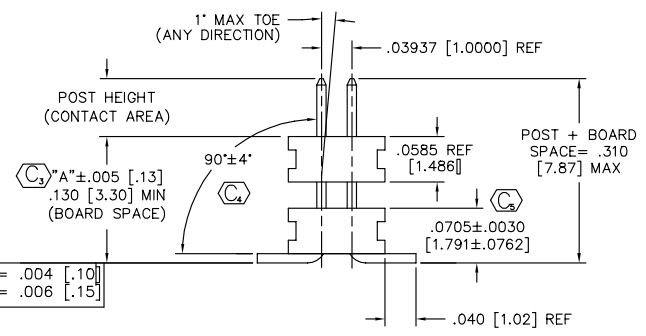
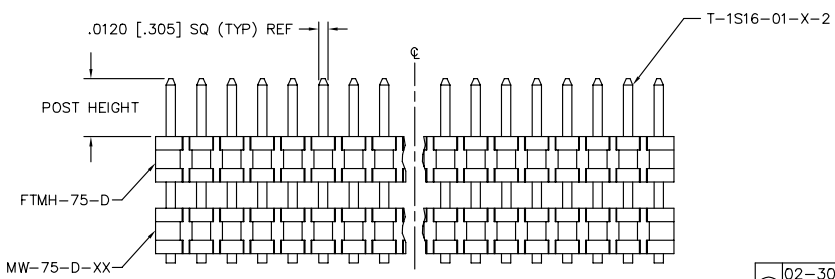


"A" RANGE	BODY STYLE		FIG.
	UPPER	LOWER	
.095 - .129 [2.41 - 3.28]	FTM-50-D	FTM-50-D	2
.130 - .245 [3.30 - 6.22]	FTMH-75-D	MW-75-D	1

SEE NOTES 5 & 6



- NOTES:
- PARTS MAY BE CUT TO POSITION; .010 MAX CUT FLASH.
  - SHEAR TAILS TO DIMENSION SHOWN; .003 MAX BURR. (FOR HAND TOOLING ONLY)
  - Ⓢ REPRESENTS A CRITICAL DIMENSION
  - PACKAGE POSITIONS 05 THROUGH 50 IN TUBES; LAYER PACKAGE POSITIONS 02 THROUGH 04.
  - HAND ASSEMBLED PARTS TO BE 2 BLACK BODIES AND MACHINED ASSEMBLED TO BE TOP: BLACK BOTTOM: NATURAL
  - FOR HAND FILL, USE FTMH-75-D FOR LOWER BODY.
  - FOR MACHINE FILLED, USE T-1S16-03-X-2.
  - AVAILABLE ONLY WITH BOARD SPACE .130 TO .245.



02-30 POS. = .004 [.10]
31-50 POS. = .006 [.15]

FIG. 1

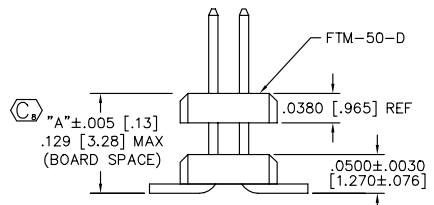


FIG. 2

(DIFFERENT AS SHOWN, OTHERWISE SAME AS FIGURE 1)

PROPRIETARY NOTE  
THIS DOCUMENT CONTAINS INFORMATION CONFIDENTIAL AND PROPRIETARY TO SAMTEC AND SHALL NOT BE REPRODUCED OR TRANSMITTED IN ANY FORM OR BY ANY MEANS, ELECTRONIC OR MECHANICAL, INCLUDING PHOTOCOPYING, RECORDING, OR BY ANY INFORMATION STORAGE AND RETRIEVAL SYSTEM, WITHOUT THE WRITTEN PERMISSION OF SAMTEC.

MATERIAL:  
FTM-50-D & FTMH-75-D  
LIQUID CRYSTAL POLYMER  
COLOR: BLACK  
MW-75-D-XX  
LIQUID CRYSTAL POLYMER  
COLOR: NATURAL  
TERMINAL:  
PHOS BRONZE  
MAX FLASH ALLOWED:  
.002 [.05]  
MAX GATE VESTIGE  
ALLOWED: .002 [.05]



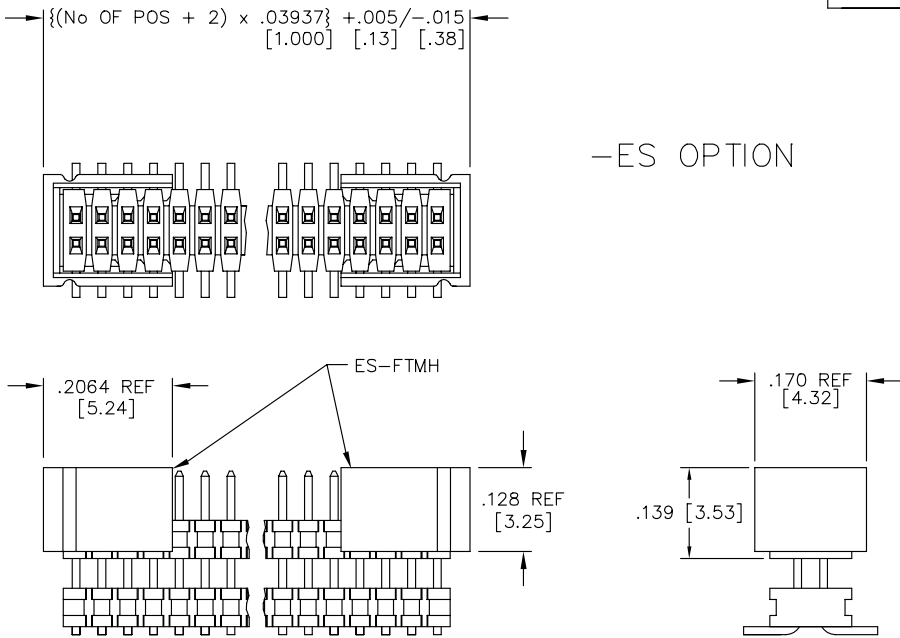
520 PARK EAST BLVD. NEW ALBANY, INDIANA 47150  
PHONE (812) 944-6733 P.O. BOX 1147  
CODE 55322

MADE BY: BRATCHER 4-3-95

REV. AG

FIG. 4

(DIFFERENT AS SHOWN, OTHERWISE SAME AS FIG. 1)



UNLESS OTHERWISE NOTED  
 DIMENSIONS ARE IN INCHES  
 TOLERANCES ARE:  
 ONE PLACE DECIMALS  $\pm .1$  [2.5] THREE PLACE DECIMALS  $\pm .005$  [.13]  
 TWO PLACE DECIMALS  $\pm .01$  [.3] FOUR PLACE DECIMALS  $\pm .0020$  [.051]

TITLE:  
 1mm x 1mm CENTERLINE  
 SURFACE MOUNT BOARD  
 STACKER ASSEMBLY

DWG NO:  
 MW-XX-03-X-D-XXX-XXX-XX  
 SHEET 2 OF 3

FIG. 3

(DIFFERENT AS SHOWN, OTHERWISE SAME AS FIG. 1)

NOTE: "M" = USED MEASURED DIMENSION (REF)  
 "P" =  $\{( "M" - .200 [5.08] ) / 2 \} \pm .020 [0.51]$

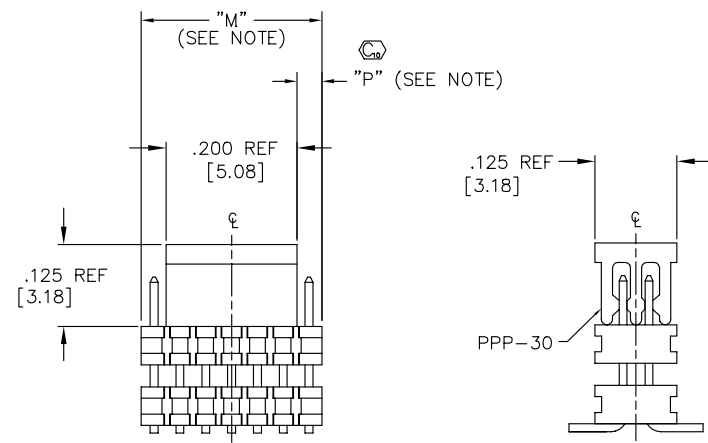
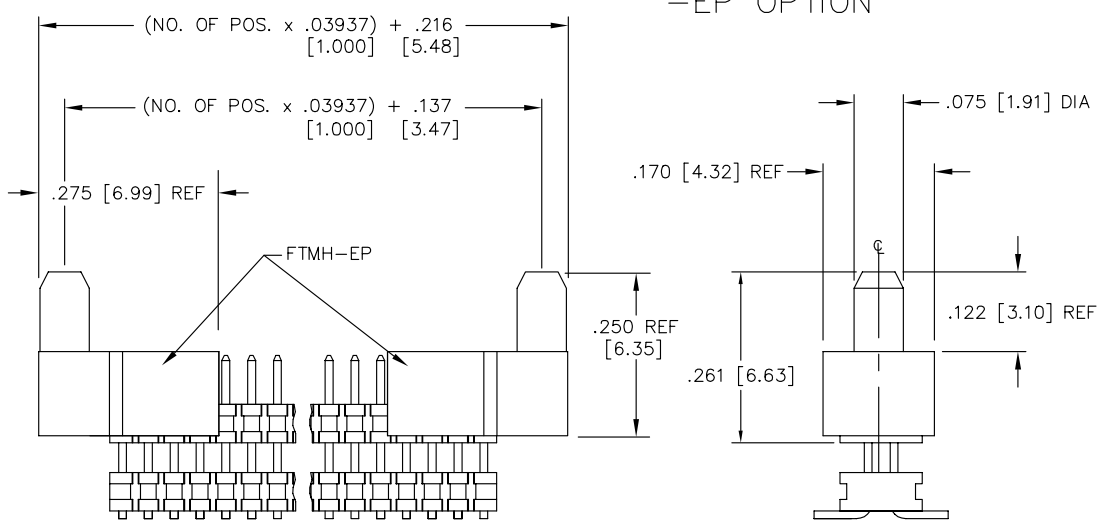


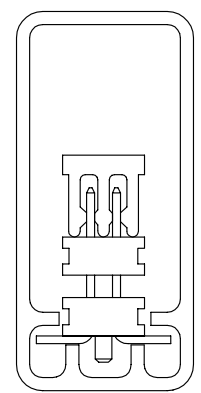
FIG. 5

(DIFFERENT AS SHOWN, OTHERWISE SAME AS FIG. 1)

-EP OPTION



PACKAGING VIEW  
 PARTS TO BE PACKAGED IN  
 PT-1-24-02-60 TUBE USING  
 2 TP-03 PLUGS.



PLOT SCALE: 1 = .15

**samtec**

520 PARK EAST BLVD. NEW ALBANY, INDIANA 47150  
 PHONE (812) 944-6733 P.O. BOX 1147  
 CODE 55322

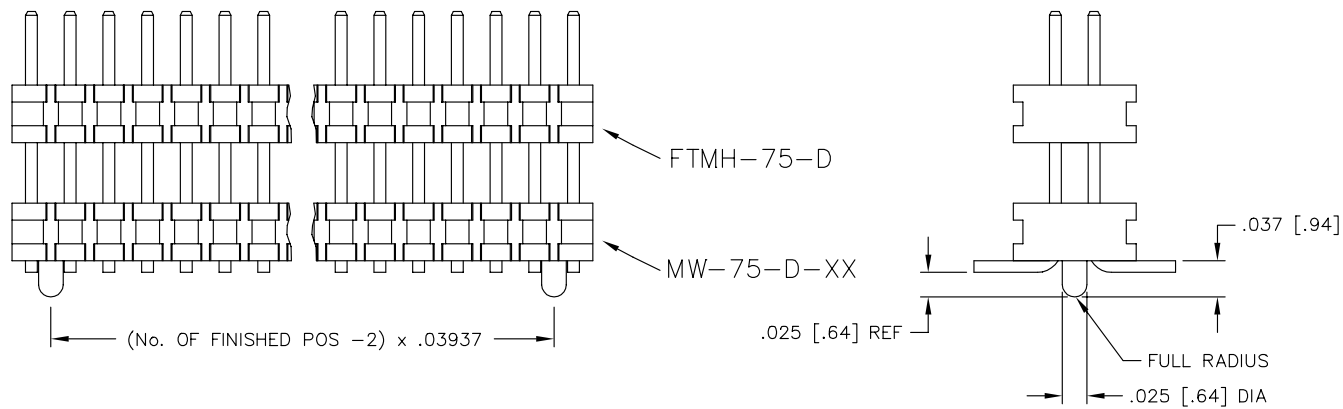
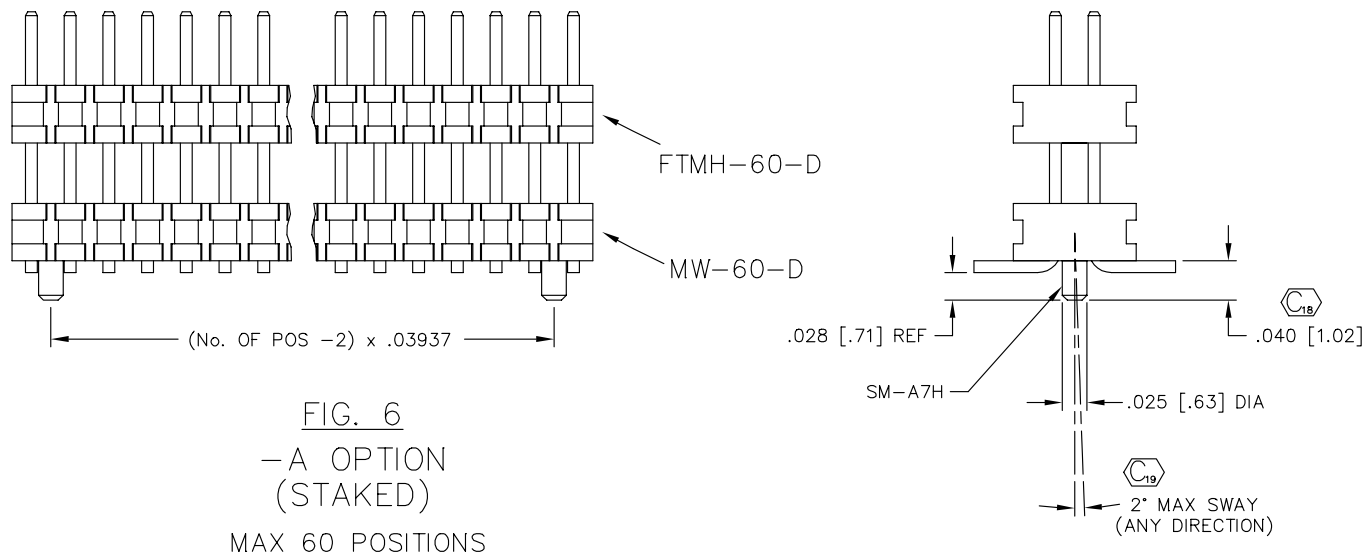
SHT 2 MADE BY:  
 JONES 1-17-97

ENG.  
 APPROVAL

MW-XX-03-X-D-XXX-XXX-XX  
 SHEET 2 OF 3

PROPRIETARY NOTE  
 THIS DOCUMENT CONTAINS INFORMATION  
 CONFIDENTIAL AND PROPRIETARY TO  
 SAMTEC INC. AND SHALL NOT BE  
 REPRODUCED OR TRANSMITTED IN  
 ANY FORM OR BY ANY MEANS,  
 ELECTRONIC OR MECHANICAL,  
 INCLUDING PHOTOCOPYING, RECORDING,  
 OR BY ANY INFORMATION STORAGE  
 AND RETRIEVAL SYSTEM, WITHOUT THE  
 WRITTEN CONSENT OF SAMTEC INC.

DIMENSIONS ARE IN INCHES		UNLESS OTHERWISE NOTED	TOLERANCES ARE:	TITLE: 1mm x 1mm CENTERLINE SURFACE MOUNT BOARD STACKER ASSEMBLY	DWG NO: MW-XX-03-X-D-XXX-XXX-XX
ONE PLACE DECIMALS $\pm .1$ [2.5]	THREE PLACE DECIMALS $\pm .005$ [.13]	ANGLES $\pm 3^\circ$			
TWO PLACE DECIMALS $\pm .01$ [.3]	FOUR PLACE DECIMALS $\pm .0020$ [.051]				SHEET 3 OF 3



PROPRIETARY NOTE  
THIS DOCUMENT CONTAINS INFORMATION  
CONFIDENTIAL AND PROPRIETARY TO  
SAMTEC INC. AND SHALL NOT BE  
REPRODUCED OR TRANSMITTED TO  
OTHER DOCUMENTS OR INCORPORATED  
OTHERS OR USED FOR ANY PURPOSE  
OTHER THAN THAT FOR WHICH IT WAS  
OBTAINED WITHOUT THE EXPRESSED  
WRITTEN CONSENT OF SAMTEC INC.

PLOT SCALE: 1 = .1  
EXISPROD\ASSEMBLY\1MM  
MW-ASM3

**samtec**

520 PARK EAST BLVD. NEW ALBANY, INDIANA 47150  
PHONE (812) 944-6733 P.O. BOX 1147  
CODE 55322

SHT 2 MADE BY: JONES 1-17-97	ENG. APPROVAL	MW-XX-03-X-D-XXX-XXX-XX SHEET 3 OF 3
---------------------------------	------------------	---

## X-ON Electronics

Largest Supplier of Electrical and Electronic Components

*Click to view similar products for [Board to Board & Mezzanine Connectors](#) category:*

*Click to view products by [Samtec](#) manufacturer:*

Other Similar products are found below :

[10135583-642402LF](#) [89885-310LF](#) [589158040000018](#) [6-1393048-0](#) [68683-613](#) [MDF7-12DP-2.54DSA](#) [MDF7-18P-2.54DSA\(01\)](#) [MDF7-20DP-2.54DSA](#) [MDF7-26D-2.54DSA\(55\)](#) [MDF7-3P-2.54DSA\(01\)](#) [MDF7B-3P-2.54DSA\(55\)](#) [MDF7C-11P-2.54DSA\(55\)](#) [MDF7C-18P-2.54DSA\(55\)](#) [MDF7C-5P-2.54DSA\(01\)](#) [MDF7P-5P-2.54DSA\(55\)](#) [75234-0516](#) [FCN-230C068-11](#) [FCN-268F012-G/BD](#) [FCN-268F036-G/BD](#) [FCN-268M012-G/0D](#) [FCN-268M024-G/1D](#) [FCN-360C008-C](#) [FCN-360C040-C](#) [FCN-723J004/1](#) [MIS-048-01-F-D-DP-K](#) [832-10-034-10-001000](#) [93696-325LF](#) [11828-1FA](#) [AXK630345P](#) [18097-0013](#) [ICA-328STT](#) [2007042-2](#) [304400-2](#) [FCN-214Q030-G/0](#) [FCN-215Q040-G/0](#) [FCN-230C068-ESA](#) [FCN-234P048-G/0](#) [FCN-235D050-G/C](#) [FCN-360A3](#) [FCN-360C040-B](#) [210-93-314-41-105000](#) [2-22603-0](#) [379-064-521-202](#) [MDF7-12P-2.54DSA\(01\)](#) [MDF7-16P-2.54DS\(56\)](#) [MDF7-40DP-2.54DSA\(55\)](#) [MDF7-8P-2.54DSA\(55\)](#) [MDF7B-16P-2.54DSA\(55\)](#) [AXG720047](#) [5031084030](#)