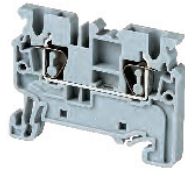


CX SERIES

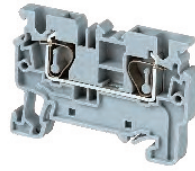
SPRING TERMINAL BLOCKS

FEED THROUGH TERMINAL BLOCKS

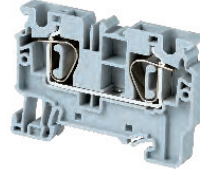
CX2.5



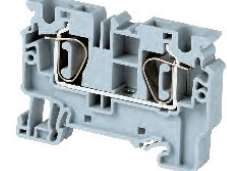
CX4



CX6



CX10



Dimensions

Width	5 mm	6 mm	8 mm	10 mm
Length	49.7 mm	54.8 mm	67.1 mm	71.7 mm
Height w DIN Rail	35 x 7.5 mm 35 x 15 mm	38.0 mm 45.5 mm	38.0 mm 45.5 mm	43.0 mm 50.5 mm
				49.5 mm 57.0 mm

Technical Data/Ratings

Approvals								
Wire Size (solid / stranded)	24-12 AWG / 0.2-2.5 mm ²		24-10 AWG / 0.2-4 mm ²		24-8 AWG / 0.2-6 mm ²		24-6 AWG / 0.2-10 mm ²	
Voltage Rating	600 V / 1000 V		600 V / 1000 V		600 V / 1000 V		600 V / 1000 V	
Current Rating	20 A / 24 A		30 A / 32 A		50 A / 41 A		65 A / 57 A	
Insulation Material	Polyamide 66		Polyamide 66		Polyamide 66		Polyamide 66	

Installation Instructions

Wire Stripping Length	10 mm	10 mm	10 mm	18 mm
Screwdriver	0.5x3 mm	0.6x3.5 mm	0.8x4 mm	0.8x4 mm

Terminal Blocks

	Cat. No.	Std. Pk.	Cat. No.	Std. Pk.	Cat. No.	Std. Pk.	Cat. No.	Std. Pk.
Grey (standard)	CX2.5	100	CX4	100	CX6	100	CX10	50
Red R	CX2.5/R	100	CX4/R	100	CX6/R	100	CX10/R	50
Blue BU	CX2.5/BU	100	CX4/BU	100	CX6/BU	100	CX10/BU	50
Black BL	CX2.5/BL	100	CX4/BL	100	CX6/BL	100	CX10/BL	50
Orange O	CX2.5/O	100	CX4/O	100	CX6/O	100	CX10/O	50
Green G	CX2.5/G	100	CX4/G	100	CX6/G	100	CX10/G	50
Yellow Y	CX2.5/Y	100	CX4/Y	100	CX6/Y	100	CX10/Y	50
White W	CX2.5/W	100	CX4/W	100	CX6/W	100	CX10/W	50

Accessories

	Cat. No.	Std. Pk.	Cat. No.	Std. Pk.	Cat. No.	Std. Pk.	Cat. No.	Std. Pk.
End Plate	EPCX2.5	50	EPCX4	50	EPCX6	50	EPCX10	20
Partition Plate	PPCX4	20	PPCX4	20	PPCX10	20	PPCX10	20
DIN Rail	2511120 CA701-15/S	20 20	2511120 CA701-15/S	20 20	2511120 CA701-15/S	20 20	2511120 CA701-15/S	20 20
End Stop	CA702 CA802 CA103	50 50 50	CA702 CA802 CA103	50 50 50	CA702 CA802 CA103	50 50 50	CA702 CA802 CA103	50 50 50
Shorting Link/ Jumpers	2 pole JX2.5/2 3 pole JX2.5/3 4 pole JX2.5/4 10 pole JX2.5/10	100 50 50 10	JX4/2 JX4/3 JX4/4 JX4/10	100 50 50 10	JX6/2 JX6/3 JX6/4 JX6/10	100 50 50 10	JX10/2 JX10/3 JX10/4 JX10/10	20 - - -
Warning Label	WLX2.5	100	WLX4	100	WLX6	100	WLX10	100
Test Plug	TX2.5	50	TX4	50	TX6	50	TX10	50
Marking Tag	MT5	100	MT6	100	MT8	100	MT10	100

X-ON Electronics

Largest Supplier of Electrical and Electronic Components

Click to view similar products for [Terminal Block Tools & Accessories](#) category:

Click to view products by [Altech](#) manufacturer:

Other Similar products are found below :

[1029563](#) [00171430102](#) [00171420102](#) [014415](#) [CSTSPC1-2](#) [9-1437653-4](#) [928358-1](#) [QC209/J](#) [HCL10-6](#) [1437403-6](#) [1437403-9](#) [1437403-8](#)
[EC0037-000](#) [MT2/H--](#) [MT2/H-32](#) [MT6/H-N](#) [MT6/V-GRND](#) [MT8/H-101-110](#) [BB2-09BF](#) [EP2.5/4UN/BG](#) [1707755](#) [1735590](#) [1755480](#)
[1760336](#) [BO3-02](#) [1789281](#) [1840227](#) [1840230](#) [1893164](#) [2-1437402-1](#) [2-1437644-9](#) [JB2-09/J](#) [2202307](#) [2302463](#) [2305949](#) [2310581](#) [8TK2-24](#)
[91.201.1](#) [L2U2](#) [2778.0](#) [2890137](#) [2901107](#) [2901123](#) [2901699](#) [2MP/J](#) [2MV-06](#) [1705126](#) [1756294](#) [F03-25](#) [1810532](#)