

**ELECTRONIC BI-STABLE
 PULSE RELAY**

**BIS-411i
 24V**

WARRANTY. The F&F products are covered by a warranty of the 24 months from the date of purchase. Effective only with proof of purchase. Contact your dealer or directly with us. More information how to make a complaint can be found on the website: www.fif.com.pl/reklamacja

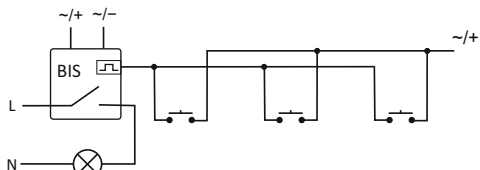


Do not dispose of this device to a garbage bin with other unsorted waste!
 In accordance with the Waste Electrical and Electronic Equipment Act any household electro-waste can be turned in free of charge and in any quantity to a collection point established for this purpose, as well as to the store in the event of purchasing new equipment (as per the old for new rule, regardless of brand). Electro-waste thrown in the garbage bin or abandoned in the bosom of nature pose a threat to the environment and human health.



PURPOSE

Electronic bi-stable pulse relays BIS-411i 24V enables the user to actuate lighting or other devices from various locations by means of control buttons in parallel connection.

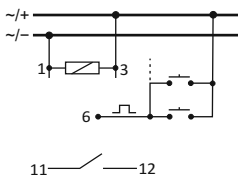


- 1 -

TECHNICAL DATA

power supply	9÷30V AC/DC
contact / current load AC-1	separated 1NO / <16A (160A/20ms)
control pulse	9÷30V AC <5mA
activation delay	0.1±0.2sec
signalling of supply	green LED
signalling of activation	red LED
power consumption	
standby	0.15W
on	0.6W
working temperature	-25÷50°C
connection	2.5mm ² screw terminals
tightening torque	0.4 Nm
dimensions	1 module (18mm)
fixing	on the TH-35 rail
ingress protection	IP20

WIRING DIAGRAM



SUPPLY

1-3 power relay: 9÷30V AC/DC

CONTROL INPUTS

6 control input

CONTACT

11-12 output: NO contact (active)

- 3 -

FUNCTIONING

The receiver is actuated by means of a current pulse triggered by pushing any bell push connected to the relay. The receiver is deactivated by another pulse or after a preset time. The relay does not „memorize” the position of the relay contact, i.e. in case of supply voltage decay and the subsequent return of supply voltage, the relay contact will be set in the off position. Such a solution prevents the automatic actuation of the receivers controlled that might occur without proper supervision after a long-lasting decay of supply voltage.

Relay version "i" is to pin adapted to cooperate with the receivers with high starting current, such as LED fluorescent lamps, ESL fluorescent lamps, electronic transformers, discharge lamps, etc.

ASSEMBLY

1. Turn OFF the power.
2. Put on the relay on the rail in the switchgear box.
3. Connect the power cable to contact 1-3: for AC voltage any polarity; for DC voltage: „+” connect to contact 3 and „-” to contact 1.
4. The timers switching which are connect in parallel connect to contact 6 and to cable which is connect to contact 3.
5. The activated receiver connect in series to contact 11-12.

ATTENTION!

The BIS-411 24V not compatible with bell pushes equipped with fluorescent lamps.



- 2 -

Connection scheme (example)

different supply voltages of the relay and receiver

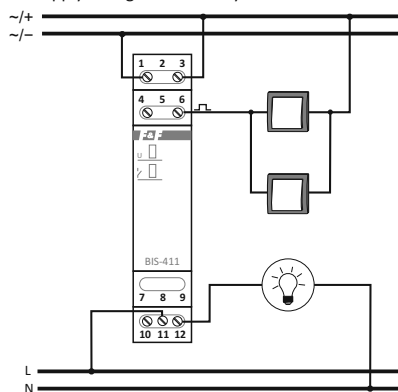


Table of power

incandescent	halogen	fluorescent	energy-saving	LED
2000W	1250W	1000W	500W	250W

The above data are indicative and will heavily depend on the design of a specific receiver (that is especially important for LED bulbs, energy-saving lamps, electronic transformers and pulse power supply units), switching frequency and operating conditions.

For more information visit www.fif.com.pl

D160121

- 4 -

X-ON Electronics

Largest Supplier of Electrical and Electronic Components

Click to view similar products for [General Purpose Relays](#) category:

Click to view products by [F&F](#) manufacturer:

Other Similar products are found below :

[APF30318](#) [JVN1AF-4.5V-F](#) [PCN-105D3MHZ](#) [5JO-10000S-SIL](#) [5JO-1000CD-SIL](#) [5JO-400CD-SIL](#) [LY2S-AC220/240](#) [LYQ20DC12](#)
[6031007G](#) [6131406HQ](#) [6-1393099-3](#) [6-1393099-8](#) [6-1393122-4](#) [6-1393123-2](#) [6-1393767-1](#) [6-1393843-7](#) [6-1415012-1](#) [6-1419102-2](#) [6-1423698-4](#) [6-1608051-6](#) [6-1608067-0](#) [6-1616170-6](#) [6-1616248-2](#) [6-1616282-3](#) [6-1616348-2](#) [6-1616350-1](#) [6-1616350-8](#) [6-1616358-7](#) [6-1616359-9](#) [6-1616360-9](#) [6-1616931-6](#) [6-1617039-1](#) [6-1617052-1](#) [6-1617090-2](#) [6-1617090-5](#) [6-1617347-5](#) [6-1617353-3](#) [6-1617801-8](#) [6-1617802-2](#) [6-1618107-9](#) [6-1618248-4](#) [M83536/1-027M](#) [CX-4014](#) [MAHC-5494](#) [MAVCD-5419-6](#) [703XCX-120A](#) [7-1393100-5](#) [7-1393111-7](#)
[7-1393144-5](#) [7-1393767-8](#)