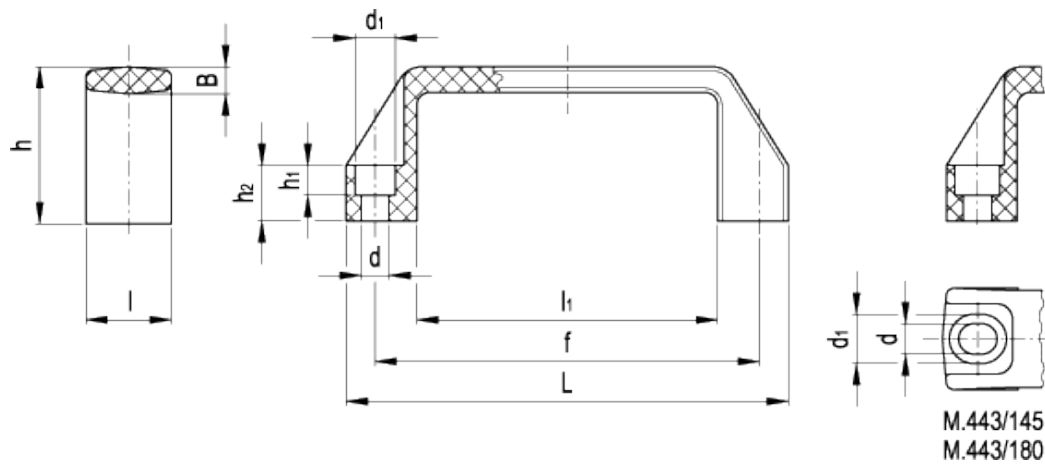


M.443 CH

Handles



technical informations

Material

Glass-fibre reinforced polyamide based (PA) technopolymer. Resistant to solvents, oils, greases and other chemical agents.

Colour

RAL 9005 black, RAL 2004 orange, RAL 7031 grey, RAL 3000 red, matte finish.

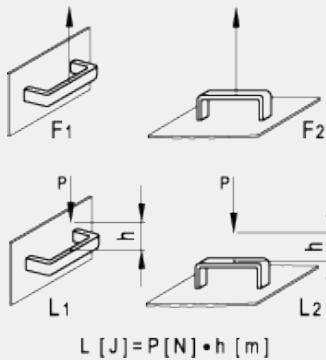


Assembly

Through holes for cylindrical-head screws with hexagon socket.
Execution M.443/180-CH: slotted assembly holes for fitting hole centres from 149 to 152 mm.

Technical data

Tensile stress and impact strength: F₁, F₂, L₁ and L₂ values reported in the table are the result of breaking tests carried out with the appropriate dynamometric equipment under the test conditions shown in the figure with ambient temperature.



RAL 9005 RAL 2004 RAL 7031 RAL 3000

Standard Elements				Description	Main dimensions							Mounting holes				F ₁	F ₂	L ₁	L ₂	Weight
Black	Orange	Grey	Red		L	f	h	B	I	l ₁	d	d ₁	h ₁	h ₂	[N]	[N]	[J]	[J]	g	
37001	37002	37004	-	M.443/110-CH*	109	93.5±0.5	38	6	21	74	6.5	10.5	7	13	3500	2500	15	8	26	
37111	-	-	-	M.443/140-6-CH*	137	117±1	41	7	26	93	6.5	10.5	6	15	4500	2500	20	13	44	
37101	37102	37104	37105	M.443/140-8-CH*	137	117±1	41	7	26	93	8.5	13.5	8.5	15	4500	2500	20	13	42	
37145	-	-	-	M.443/145-CH*	142	120÷122±1	41	7	26	100	8.5	13.5	8.5	15	3700	2500	25	14	44	
37151	37152	37154	-	M.443/150-CH*	150	132±1	45	7	27	108	8.5	13.5	8.5	16	3500	2500	27	14	47	
37191	37192	37193	-	M.443/180-CH*	172	149÷152±1	47	7	27	125	8.5	13.5	8.5	17	3000	2600	27	15	53	
37201	37202	37204	37205	M.443/200-CH*	196	179±1	50	7.5	28	151	8.5	13.5	8.5	17	2800	2700	28	17	70	
37251	37252	37254	-	M.443/260-CH*	260	235±1	54	8.5	30	201	10.5	16.5	10.5	20	3200	3500	30	22	118	

* Complete the code and the description of the standard item needed by adding one of the available colour listed in the code column.



ELESA and GANTER models all rights reserved in accordance with the law. Always mention the source when reproducing our drawings.

STANDARD MACHINE ELEMENTS WORLDWIDE

X-ON Electronics

Largest Supplier of Electrical and Electronic Components

Click to view similar products for [Mounting Fixings](#) category:

Click to view products by [Elesa & Ganter](#) manufacturer:

Other Similar products are found below :

[5912235-2](#) [007310](#) [007541](#) [6-141-P](#) [620HA038NF09](#) [620HA038NF11](#) [CTJ420E028-513](#) [M81714/60-12-01](#) [M81714/60-22-01](#) [L/C](#)
[MA1EAF1200](#) [70-584649-01P](#) [71-074914-006](#) [71-215091-8S](#) [712HA170B23128-N](#) [71-344699-4S](#) [71-441549-19S](#) [71-441864-5S](#) [71-](#)
[490451-4H](#) [EX-13-3-B-16-325PN](#) [75-69116-8S](#) [75-69211-3P](#) [75-69220-27S](#) [75-69224-5S](#) [75-69614-2S](#) [770-006A109](#) [770-006A109R](#) [770-](#)
[006A207](#) [770-006A208W1](#) [770-006A209](#) [770-006A306](#) [770-006A703W1](#) [770-006A704](#) [770-006A704W1](#) [770-006A705](#) [770-006A706](#)
[770-006A706W1](#) [770-006A707](#) [770-006A709](#) [770-007A203](#) [770-007A203W1](#) [770-007A204W1](#) [770-007A207W1](#) [770-007A703](#) [770-](#)
[007A704W1](#) [770-007A706](#) [770-007A707W1](#) [770-010Y208](#) [770-010Y308](#) [770-010Y705](#) [770-010Y706](#)