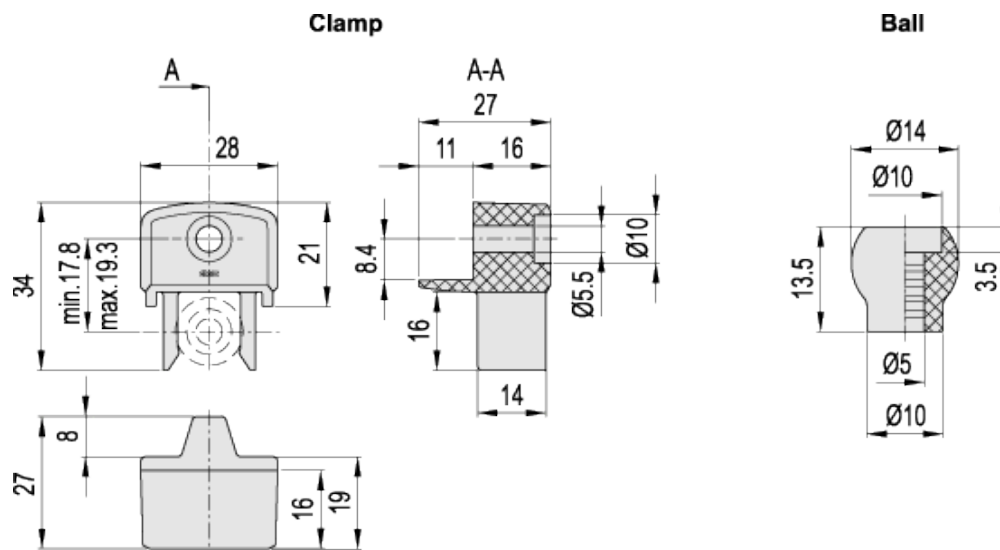


# BPS

Ball-shaped door lock



ELESA Original design



## technical informations

### Clamp

Acetal based (POM) technopolymer. Resistant to solvents, oils, greases and other chemical agents.

### Ball

Glass-fibre reinforced polyamide based (PA) technopolymer. Resistant to solvents, oils, greases and other chemical agents.

### Colour

Black, matte finish.

### Assembly

Self-tapping screw  $\varnothing$  4.8 mm. UNI 7981 B or M5 cylindrical head screw with hexagon socket DIN 912.

*Accessories on request*

BPS.30-SP: acetal based (POM) technopolymer spacers kit 5, 10, 15 mm (sold separately), black colour in order to compensate possible differences in width between frame and door.

*Features and applications*

BPS ball-shaped door lock (ELESA patent) consists of a clamp to be fixed to a frame and a ball to be fixed to a door. The clamp, in which the ball fixed to the closing door is inserted, is a mechanical stop device also to the door movement, thanks to its shape.

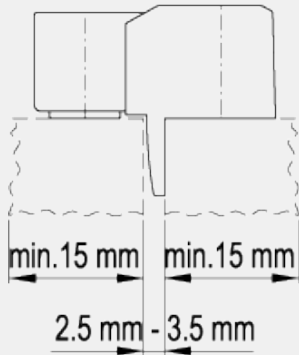
The screws, that fix the clamp and the ball respectively to the frame and to the door, are identical. Thus, making the assembly easier.

Under specific tests, the clamp showed constant performances for more than 20.000 cycles.

The ball-shaped door lock has been conceived for use with both shutter doors and sliding doors.

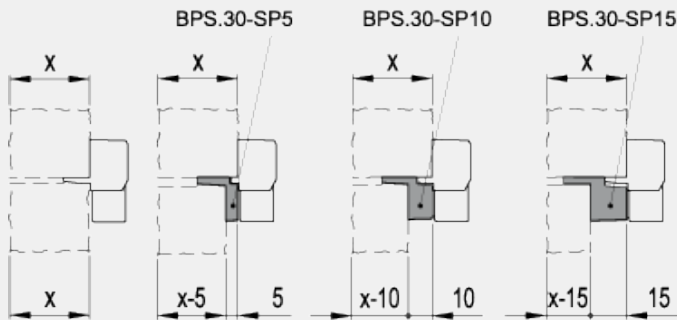
The minimum thickness for the profile suitable for use is 15 mm, while the distance between door and frame must be within 2.5 mm and 3.5 mm (fig.1).

Fig.1

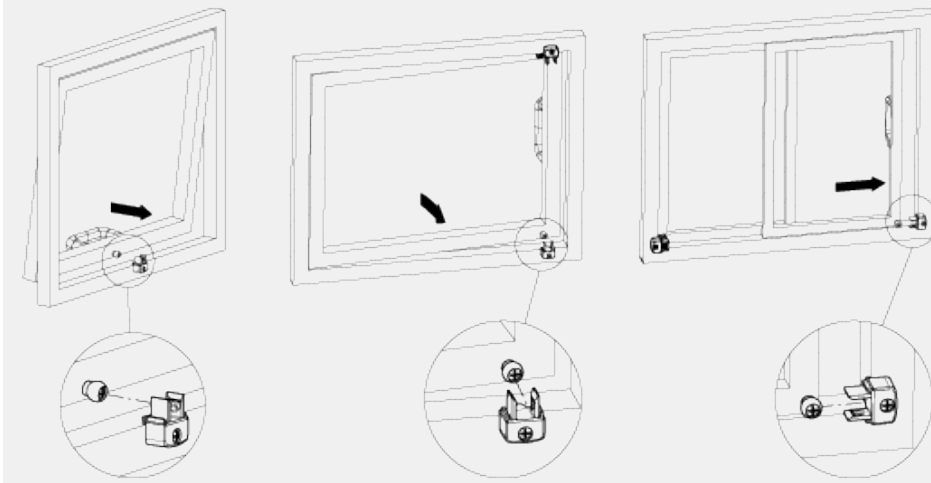


Thickness differences between frame and door	Spacer to be used	Description
0	-	-
5 mm	5 mm	BPS.30-SP5
10 mm	10 mm	BPS.30-SP10
15 mm	15 mm	BPS.30-SP15
20 mm	10 mm + 10 mm	BPS.30-SP10 + BPS.30-SP10
25 mm	10 mm + 15 mm	BPS.30-SP10 + BPS.30-SP15
30 mm	15 mm + 15 mm	BPS.30-SP15 + BPS.30-SP15

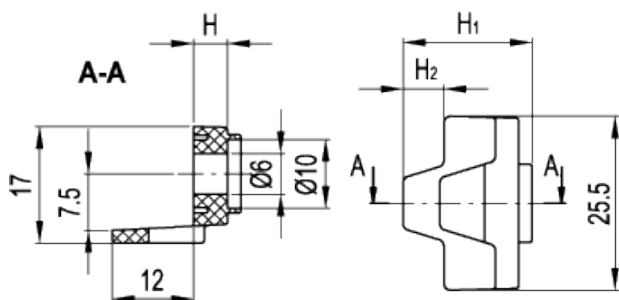
Examples of BPS.30-SP spacers assembly



Application examples



Standard Elements		Opening release strength	Weight
Code	Description	[N]	g
6251	BPS.30	30	10



Standard Elements		Main dimensions			Weight
Code	Description	H	H <sub>1</sub>	H <sub>2</sub>	g
6253	BPS.30-SP5	5	19	6	3
6254	BPS.30-SP10	10	23	8	4
6255	BPS.30-SP15	15	28	9	5



ELESA and GANTER models all rights reserved in accordance with the law. Always mention the source when reproducing our drawings.

STANDARD MACHINE ELEMENTS WORLDWIDE

## X-ON Electronics

Largest Supplier of Electrical and Electronic Components

*Click to view similar products for [Mounting Fixings](#) category:*

*Click to view products by [Elesa & Ganter](#) manufacturer:*

Other Similar products are found below :

[007310](#) [007541](#) [6-141-P](#) [620HA038NF09](#) [620HA038NF11](#) [71-074914-006](#) [71-146610-6H](#) [712HA170B23128-N](#) [71-441549-19S](#) [71-490451-4H](#) [75-69211-3P](#) [75-69220-27S](#) [75-69224-5S](#) [770-006A109](#) [770-006A109R](#) [770-006A207](#) [770-006A208W1](#) [770-006A209](#) [770-006A306](#) [770-006A703W1](#) [770-006A704](#) [770-006A704W1](#) [770-006A705](#) [770-006A706](#) [770-006A706W1](#) [770-006A707](#) [770-006A709](#) [770-007A203](#) [770-007A203W1](#) [770-007A204W1](#) [770-007A207W1](#) [770-007A703](#) [770-007A704W1](#) [770-007A706](#) [770-007A707W1](#) [770-010Y208](#) [770-010Y308](#) [770-010Y705](#) [770-010Y706](#) [770-010Y707W1](#) [770-011T201](#) [770-011T203](#) [770-011T701W1](#) [770-011T702](#) [770-011T702W1](#) [770-011T703](#) [770-013210W1](#) [770-013311](#) [770-013312](#) [770-013709](#)