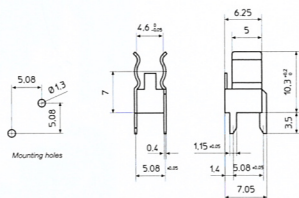
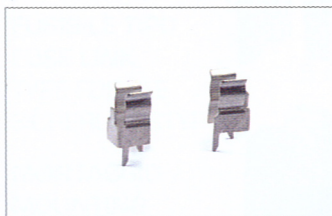


ACCESSORI
ACCESSORIES
ACCESSOIRES
ZUBEHÖR

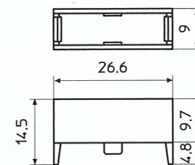
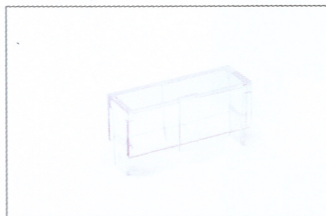
CT134
CONTATTI / CLIPS / CONTACTS / KONTAKTE



Materiale / Material **Cu Zn 37**
Matériau / Material

Trattamento galvanico / Plating **Ni + Sn**
Traitement galvanique / Plating Veredelung

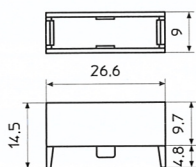
BS140NA
CAPPUCCIO / COVER / CAPUCHON / DECKEL



Materiale / Material **PC - UL 94 V2**
Matériau / Material

Colore / Colour **Trasparente / Clear transparent**
Couleur / Farbe **Transparent / Durchsichtig**

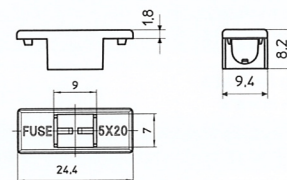
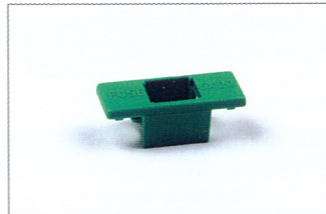
BS140ANA
CAPPUCCIO / COVER / CAPUCHON / DECKEL



Materiale / Material **PC - UL 94 V0**
Matériau / Material

Colore / Colour **Opaco / Opaque**
Couleur / Farbe

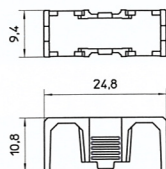
BS232
CAPPUCCIO / COVER / CAPUCHON / DECKEL



Materiale / Material **PA - UL94 V0**
Matériau / Material

Colore standard / Standard colour **Verde / Green**
Couleur standard / Standard Farbe **Vert / Grün**
Altri colori / Other colours **A richiesta / On demand**
Autres couleurs / Andere Farben **Sur demande / Auf Anfrage**

BS613
CAPPUCCIO / COVER / CAPUCHON / DECKEL



Materiale / Material **PA - UL94 V0**
Matériau / Material

Colore standard / Standard colour **Nero / Black**
Couleur standard / Standard Farbe **Noir / Schwarz**

Altri colori / Other colours **A richiesta / On demand**
Autres couleurs / Andere Farben **Sur demande / Auf Anfrage**

TABELLA DI CORRISPONDENZA DEGLI ACCESSORI
TABLEAU DE CORRESPONDANCE DES ACCESSOIRES

ACCESSORIES CORRESPONDANCE TABLE
TABELLE KORRESPONDENZZUBEHÖR

	PTF/15	PTF/15B	PTF/18	PTF/75	PTF/76	PTF/77	PTF/78
BS140NA	•	•					
BS140ANA	•	•					
BS232				•	•	•	•
BS613			•				

X-ON Electronics

Largest Supplier of Electrical and Electronic Components

Click to view similar products for [Fuse Holder](#) category:

Click to view products by [Stelvio Kontek](#) manufacturer:

Other Similar products are found below :

[570-290-741P40](#) [570-290-751P40](#) [0031.1351.01](#) [020417G](#) [020418E](#) [80910030](#) [8601.2020](#) [9-3557-GP REV A](#) [15600-08-10](#) [BK1-HTC-45M](#)
[BK/FHN19G](#) [BK/HJM-HH](#) [BK/HKP-CCHH](#) [BK/HKP-E-CC](#) [BK/HKP-E-HH](#) [BK/HKP-EH-HH](#) [BK/HKP-U-HH](#) [BK/HTJ-LES-FUSE](#)
[HMG-241](#) [2086-1](#) [2193](#) [RTMF-SC](#) [2602](#) [2650](#) [FHN31G1](#) [G4PB8](#) [2660](#) [2799](#) [CQ-209V](#) [345621A](#) [3794](#) [4202](#) [4408](#) [4413](#) [4423](#) [4482](#)
[4532](#) [4537](#) [TSD1404-12](#) [BK/FHN31G1](#) [BK/HKP-H-CC](#) [BK/HKP-JQ-BB](#) [BK/HKP-JQW-BB](#) [BK/HKP-N-HH](#) [BK/HKP-S-CC](#) [BK/HKP-W-](#)
[BBHH](#) [BP/HHS](#) [BPHHU](#) [55900008011](#) [C1933](#)