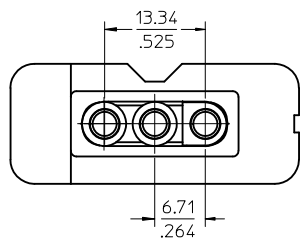
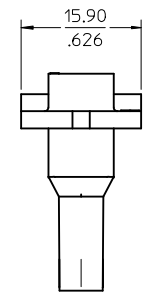
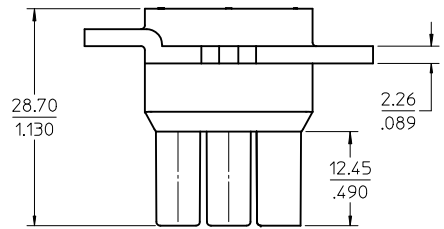
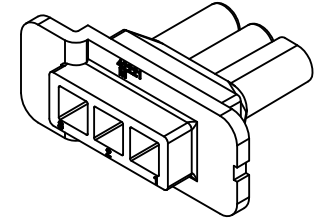
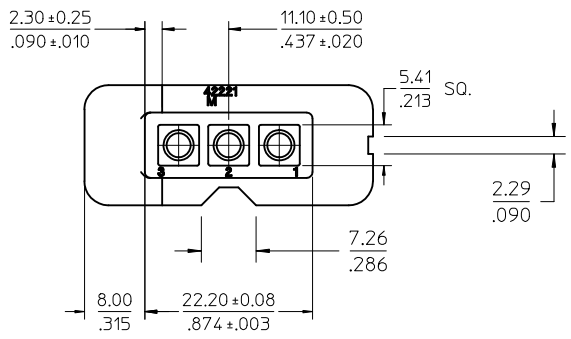


- NOTES:
1. MATERIAL: NYLON, TYPE 6/6, UL94V-2, COLOR: NATURAL
 2. FINISH: NONE
 3. PRODUCT SPECIFICATION: N/A
 4. PACKAGING INFORMATION: BULK

PLUG

REDRAW FROM MODEL EC NO: UCP2011-1528 DRWNC: STEWART 2010/11/30 CHKD: APPR: FSMITH 2010/12/06	QUALITY SYMBOLS	GENERAL TOLERANCES (UNLESS SPECIFIED)	DIMENSION STYLE	SCALE	DESIGN UNITS	THIRD ANGLE PROJECTION
	▽=0 ▽=0	mm INCH 4 PLACES ± --- ± --- 3 PLACES ± --- ± .010 2 PLACES ± .25 ± .015 1 PLACE ± .38 ± --- ANGULAR ± 1/2°	MM/IN	2:1	INCH	☉ □ THIRD ANGLE PROJECTION
	DRAWN BY: RWK CHECKED BY: RHR APPROVED BY: FSMITH	DATE: 1988/03/04 DATE: 1988/03/04 DATE: 2010/12/06	TITLE .093/(2.36) HOUSING PLUG AND RECEPTACLE, 3 CIRCUIT .264/(6.70) CENTERS		MOLEX INCORPORATED	
	MATERIAL NO. 19-09-2035	DOCUMENT NO. SD-42221-3*	SHEET NO. 1 OF 2		THIS DRAWING CONTAINS INFORMATION THAT IS PROPRIETARY TO MOLEX INCORPORATED AND SHOULD NOT BE USED WITHOUT WRITTEN PERMISSION	



- NOTES:
1. MATERIAL: NYLON, TYPE 6/6
UL94V-2, COLOR: NATURAL
 2. FINISH: NONE
 - PRODUCT SPECIFICATION: N/A
 4. PACKAGING INFORMATION: BULK

RECEPTACLE

REDRAW FROM MODEL EC NO: UCP2011-1528 DRWNC: STEWART 2010/11/30 CHKD: APPR: FSMITH 2010/12/06	QUALITY SYMBOLS	GENERAL TOLERANCES (UNLESS SPECIFIED)	DIMENSION STYLE	SCALE	DESIGN UNITS	THIRD ANGLE PROJECTION															
	$\nabla=0$ $\nabla=0$	<table border="1"> <thead> <tr> <th></th> <th>mm</th> <th>INCH</th> </tr> </thead> <tbody> <tr> <td>4 PLACES</td> <td>± .---</td> <td>± .---</td> </tr> <tr> <td>3 PLACES</td> <td>± .---</td> <td>± .010</td> </tr> <tr> <td>2 PLACES</td> <td>± .25</td> <td>± .015</td> </tr> <tr> <td>1 PLACE</td> <td>± .38</td> <td>± .---</td> </tr> </tbody> </table>		mm	INCH	4 PLACES	± .---	± .---	3 PLACES	± .---	± .010	2 PLACES	± .25	± .015	1 PLACE	± .38	± .---	MM/IN	2:1	INCH	
		mm	INCH																		
	4 PLACES	± .---	± .---																		
3 PLACES	± .---	± .010																			
2 PLACES	± .25	± .015																			
1 PLACE	± .38	± .---																			
	<table border="1"> <thead> <tr> <th>DRAWN BY</th> <th>DATE</th> </tr> </thead> <tbody> <tr> <td>RWK</td> <td>1988/03/04</td> </tr> <tr> <th>CHECKED BY</th> <th>DATE</th> </tr> <tr> <td>RHR</td> <td>1988/03/04</td> </tr> <tr> <th>APPROVED BY</th> <th>DATE</th> </tr> <tr> <td>FSMITH</td> <td>2010/12/06</td> </tr> </tbody> </table>	DRAWN BY	DATE	RWK	1988/03/04	CHECKED BY	DATE	RHR	1988/03/04	APPROVED BY	DATE	FSMITH	2010/12/06	TITLE .093/(2.36) HOUSING PLUG AND RECEPTACLE, 3 CIRCUIT .264/(6.70) CENTERS							
DRAWN BY	DATE																				
RWK	1988/03/04																				
CHECKED BY	DATE																				
RHR	1988/03/04																				
APPROVED BY	DATE																				
FSMITH	2010/12/06																				
	DRAFT WHERE APPLICABLE MUST REMAIN WITHIN DIMENSIONS	MATERIAL NO. 19-09-1035	MOLEX INCORPORATED		SHEET NO. 2 OF 2																

THIS DRAWING CONTAINS INFORMATION THAT IS PROPRIETARY TO MOLEX INCORPORATED AND SHOULD NOT BE USED WITHOUT WRITTEN PERMISSION

X-ON Electronics

Largest Supplier of Electrical and Electronic Components

Click to view similar products for [Pin & Socket Connectors](#) category:

Click to view products by [Molex](#) manufacturer:

Other Similar products are found below :

[6450822-1](#) [770392-1](#) [794042-1](#) [796885-1](#) [8-794535-1](#) [881459-2](#) [R929993003](#) [1-350779-3](#) [1403611-1](#) [1-480349-5](#) [152302-5](#) [1586092-1](#)
[1586129-1](#) [1586487-1](#) [1586681-4](#) [1586700-1](#) [1586065-1](#) [1586077-1](#) [1586368-1](#) [1586380-1](#) [1586616-1](#) [1586680-5](#) [1586681-2](#) [1604996-1](#)
[16-06-0038](#) [164164-5](#) [1-6609930-1](#) [172296-1](#) [1-794714-6](#) [19-09-2035](#) [1969804-1](#) [200503-1](#) [200788-2](#) [201046-7](#) [202648-4](#) [2029076-2](#)
[2029090-4](#) [2029095-4](#) [2-66102-6](#) [925061-7](#) [926681-1](#) [293734-4](#) [293737-2](#) [1-765362-4](#) [1-794606-3](#) [1871534-1](#) [1969795-1](#) [1969798-1](#)
[1969800-1](#) [200833-4](#)