

Cat.6 Keystone Inline Coupler

Technical Features

Category 6 Class E 250 MHz

ISO/IEC 11801 and TIA/EIA 568B.2-1

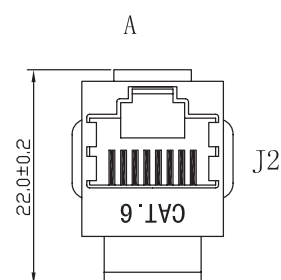
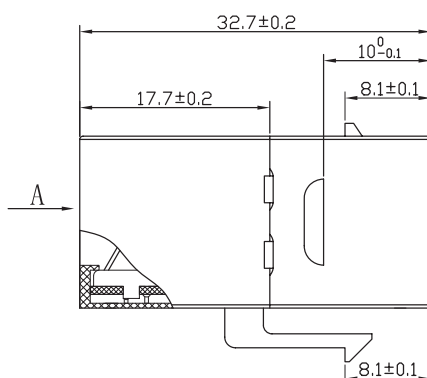
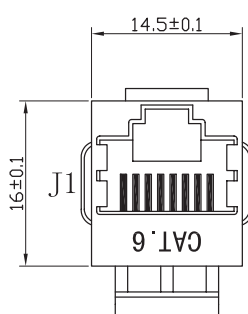
Snap-in mounting

Pin configuration: 1:1

2x RJ45 jack, fully shielded / unshielded

Technical Drawings

NK4011



www.logilink.com



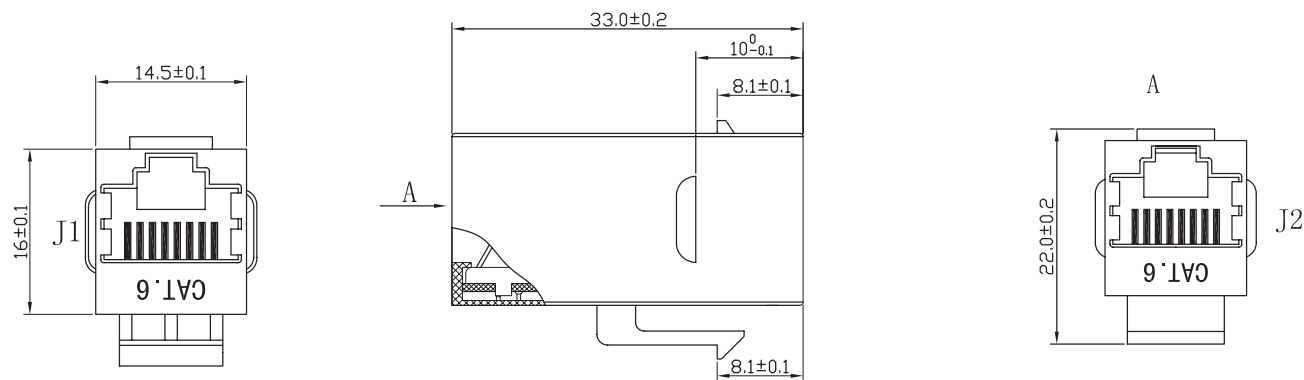
RoHS
compliant



Made in China

* The specifications and pictures are subject to change without notice.
*All trade names referenced are the registered trademark of their respective owners.

NK4012



Part no.	Type	EAN Code
NK4011	fully shielded	4052792026856
NK4012	unshielded	4052792026870

Package Contents

Packaging Informations(NK4011)

Packing Dimension	33 x 22 x 20mm
Packing Weight	0.04g
Carton Dimension	350 x 300 x 380mm
Carton Q'ty	500pcs
Carton Weight	15kg

Made in China

* The specifications and pictures are subject to change without notice.
*All trade names referenced are the registered namework of their respective owners.

Packaging Informations(NK4012)

Packing Dimension	33 x 22 x 20mm
Packing Weight	0.02g
Carton Dimension	350 x 300 x 380mm
Carton Q'ty	500pcs
Carton Weight	7.3kg

X-ON Electronics

Largest Supplier of Electrical and Electronic Components

Click to view similar products for [Modular Connectors](#) / [Ethernet Connectors](#) category:

Click to view products by [Logilink](#) manufacturer:

Other Similar products are found below :

[RJE231881317T](#) [MP1010RX-1000](#) [MP44RX-1000](#) [GAX-3-66](#) [GAX-8-62](#) [93606-0253](#) [GD-A-44](#) [GDCX-PA-66-50](#) [GDCX-PN-64](#) [GDCX-PN-66](#) [GDCX-PN-66-50](#) [GDLX-A-66](#) [GDLX-A-88](#) [GDLX-N-66](#) [GDLX-S-88K](#) [GDTX-S-88-50](#) [GDX-PA-1010](#) [GLX-A-44](#) [GLX-N-1010M-BLK](#) [GLX-N-44M](#) [GLX-S-88M-BLK](#) [GMX-N-1010](#) [GMX-S-1010](#) [GMX-S-66](#) [GMX-SMT2-N-1010](#) [GMX-SMT2-N-64-50](#) [GMX-SMT2-S6-88](#) [GMX-SMT4-N-88](#) [GPX-2-64](#) [GRT1-BT1-5](#) [GSGX-N-2-88](#) [GSX-NS2-88-3.05](#) [GSX-NS2-88-3.05-50](#) [GSX-NS-88-3.05-30](#) [GSX-NS-88-3.05-50](#) [GSX-NS-88-3.68](#) [1-1775629-2](#) [GWLX-S-88-GR](#) [GWLX-S9-88-YG](#) [1300500326](#) [1300500227](#) [1300530003](#) [1300570002](#) [1324640-4](#) [RJ11FTVC2G](#) [RJ11FTVC2N](#) [RJFTVX2SA1G](#) [132764-001](#) [1400000](#) [1413176](#)