

High Selectivity Super Het Receiver

SAW FILTERED & HIGH SENSITIVITY

RX-4MM3++/F

P.N. 650201138G

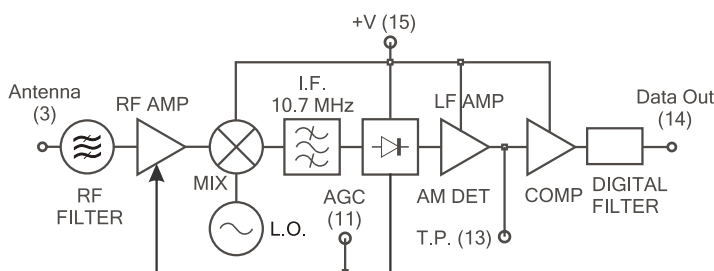
Descrizione

Ricevitore supereterodina AM OOK miniaturizzato ad elevata sensibilità in ingresso, alta immunità ai campi elettromagnetici interferenti, ottenuta con l'impiego del filtro SAW in ingresso. Grazie a una nuova tecnica circuitale, rende il ricevitore ideale per applicazioni dove sia necessaria un'ottima immunità ai disturbi creati da motori a spazzole.

Description

Super-het receiver of AM modulated digital data, working at 433,92 Mhz frequency. Pin to pin compatible with all OOK AUREL receivers. High selectivity and sensitivity obtained by a front-end SAW filter. Ideal for applications needs an higher noise immunity created by brushes electrical motor.

Block diagram



TECHNICAL SPECIFICATION

Ta = 25 °C

Characteristics		Min	Typ	Max	Unit
Supply Voltage	Alimentazione	3	3.3	3.6	Vdc
Supply Current	Corrente Assorbita		7.5	8.6	mA
Reception frequency	Frequenza di ricezione		433.92		MHz
RF sensitivity ⁽¹⁾	Sensibilità RF ⁽¹⁾	-110	-113 ⁽¹⁾		dBm
IF Bandwidth - 3dB	Banda passante IF a - 3dB		280		KHz
Interference rejection at ± 10 Mhz	Reiezione alle Interferenze a ± 10 Mhz	60			dB
Square wave output	Onda quadra in uscita	0.1	2	3	KHz
Output high voltage	Livello alto d'uscita	0.8Vd ⁽⁴⁾			V
Output low voltage	Livello basso d'uscita			0.2Vd ⁽⁴⁾	V
Antenna RF emission	Emissioni RF spurie in antenna			- 60 ⁽²⁾	dB
Switch-on time	Tempo di accensione			300	ms
Operating temperature range	Temperatura di lavoro	-20		+80	°C

Nota 1: Sensibilità ottenuta mediante generatore RF modulato 100%

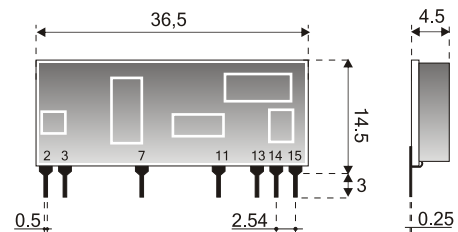
Nota 2: La misura dell'emissione RF è stata ottenuta collegando direttamente l'analizzatore di spettro sul Pin 14 del RX.

Nota 4: Valori ottenuti con carico massimo di 10K.

P.N. 650201138G

AUREL S.p.A. • Via Foro dei Tigli, 4 • I 47015 Modigliana (FC) Italy • Phone : +39 (0546) 941124 • Fax : +39 (0546) 941660
<http://www.aurelwireless.com> • email: rfcomm@aurel.it

Dimensions



Component Side



Pin-Out

- 2) Ground
- 3) Antenna
- 7) Ground
- 11) AGC On-Off
- 13) RSSI Out - Test point
- 14) Data Out
- 15) +V

Applications

- Apricancello
- Attuatori
- Avvolgibili
- Pompe idrauliche

X-ON Electronics

Largest Supplier of Electrical and Electronic Components

Click to view similar products for [RF Modules](#) category:

Click to view products by [Aurel](#) manufacturer:

Other Similar products are found below :

[HMC-C009](#) [HMC-C011](#) [nRF24L01P-MODULE-PCB](#) [HMC-C021](#) [HMC-C024](#) [XB9XT-DPRS-721](#) [XBP9B-DMUTB022](#) [nRF24L01P-MODULE-SMA](#) [CMD-KEY2-418-CRE](#) [XM-C92-2P-UA](#) [XB9XT-DPUS-721](#) [V640-A90](#) [HMC-C583](#) [MAAM-008818-TR3000](#) [MTSMC-H5-U](#) [SIMSA868-PRO](#) [SIMSA915C-PRO](#) [SIMSA868C-PRO](#) [SIMSA433C-PRO](#) [SIMSA915-PRO](#) [XBP9B-DMUT-042](#) [HMC-C582](#) [HMC-C022](#) [XBP9B-DPST-041](#) [XBP9B-DMWT-042](#) [SM-MN-00-HF-RC](#) [HMC-C031](#) [MT-02](#) [M1002GB](#) [702-W](#) [SIMSA868C-N-PRO](#) [SIMSA433C-N-PRO](#) [SIMSA915C-N-PRO](#) [ADP-R202-00B](#) [PEPPER WIRELESS C1 USB](#) [S2-10732-Z1T61](#) [S2-107XB-Z2356-Z2352](#) [S2-10672-Z1L85](#) [S2-10686-Z1L1D](#) [S2-10688-Z1L1T](#) [S2-106BA-Z1P20](#) [S2-1060C-Z1F0A](#) [S2-106R4-Z1Q6F-Z1Q6Q](#) [S2-106R4-Z1Q6J-Z1Q6Q](#) [S2-106RB-Z1Q6V-Z1Q6Q](#) [S2-107DR-Z1Y5B](#) [SU60-2230C-PU](#) [RC-TFSK3-868](#) [NANO RFID POE](#) [650201424G](#)