

6

5

4

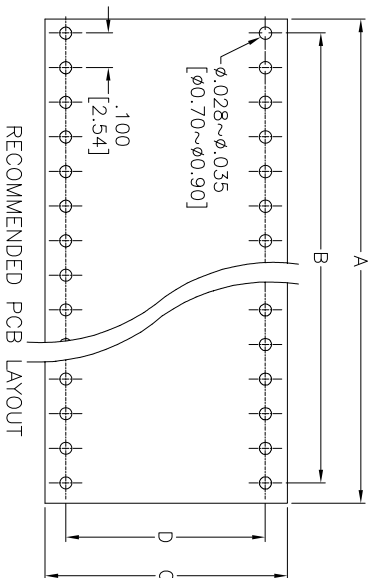
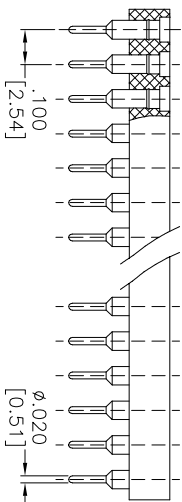
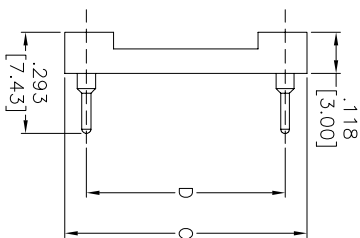
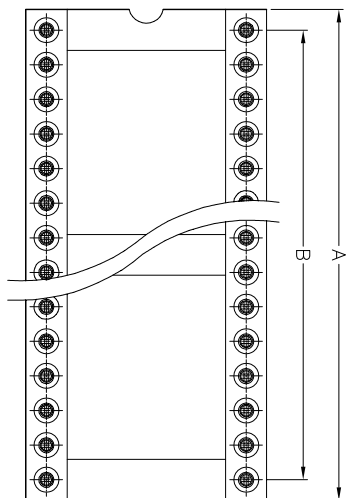
3

2

1

APPROVED: \_\_\_\_\_  
 DATE: \_\_\_\_\_ TITLE: \_\_\_\_\_

Rev	AWO #	Description	Date	Appr
-		RELEASED	3/30/05	
A		REVISED SPEC.	10/25/11	



Series	POSITION	A	B	C	D
ICM-3XX	6	.300 [7.62]	.200 [5.08]		
	8	.400 [10.16]	.300 [7.62]		
	10	.500 [12.70]	.400 [10.16]		
	14	.700 [17.78]	.600 [15.24]	.400	
	16	.800 [20.32]	.700 [17.78]	.400	.300
	18	.900 [22.86]	.800 [20.32]	.400	.300
	20	1.00 [25.40]	.900 [22.86]		
	24	1.20 [30.48]	1.10 [27.94]		
	28	1.40 [35.56]	1.30 [33.02]		

**ADAM TECH**

909 Railway Avenue, Union, NJ 07083  
 Phone: 908-687-5000 Fax: 908-687-5710

TITLE  
 SCREW MACHINE IC SOCKET  
 .300" ROW SPACING

UNLESS OTHERWISE SPECIFIED  
 ALL DIMENSIONS ARE INCHES [MM]  
 TOLERANCES: EXCEPT AS NOTED

.X	$\pm .10$	$\phi$ X	$\pm .10$
.XX	$\pm .020$	$\phi$ XX	$\pm .015$
.XXX	$\pm .015$	$\phi$ XXX	$\pm .010$

APPROVALS

DRAWN	SS	3/30/05
CHECKED		
APPROVED		

SIZE	PART NO.	REV.
X	ICM-3XX-1-GT	A
REF:	S00007T	SHEET 1 OF 1
SCALE:	NIS	

**SPECIFICATIONS:**

- Material:**  
 Insulator: Glass filled thermoplastic polyester, rated UL 94V-0  
 Insulator color: Black  
 Contacts: Brass  
 Clip: Beryllium copper  
 Plating:  
 Gold over Nickel underplate on inner contacts,  
 Tin over Copper underplate on outer sleeve  
 Electrical:  
 Current rating : 3amps/contact max.  
 Current resistance :  $\leq 4m\Omega$  / contact  
 Insulation resistance :  $\geq 10,000M\Omega$  at 500 VAC  
 Rated voltage : 100 VRMS / 150VDC  
 Mechanical:  
 Operating temperature : Gold plated : -55°C to + 125°C  
 (Continuous) Tin plated : -40°C to + 105°C  
 Average insertion force : < 250g  
 Average withdrawal force : > 50g  
 With steel pin of  $\phi 0.17$  [0.43mm]  
 With steel pin of  $\phi 0.17$  [0.43mm]  
 Mechanical life : min. 200  
 Environmental:  
 Lead free, RoHS compliant.

6

5

4

3

2

1



## X-ON Electronics

Largest Supplier of Electrical and Electronic Components

*Click to view similar products for [IC & Component Sockets](#) category:*

*Click to view products by [Adam](#) manufacturer:*

Other Similar products are found below :

[714-43-102-31-012000](#) [0066-3-17-15-30-14-02-0](#) [0134-0-15-15-32-27-04-0](#) [614-DG5](#) [6527-0-00-15-00-00-03-0](#) [670](#) [672](#) [673](#) [712-93-120-41-001000](#) [714-93-104-31-018000](#) [8059-4G1-LF](#) [807-22-001-10-001101](#) [807-22-001-10-003101](#) [807-22-001-10-004101](#) [807-22-001-10-006101](#) [807-22-001-30-011101](#) [807-22-001-30-012101](#) [807-22-001-30-013101](#) [807-22-001-30-014101](#) [8-1437531-4](#) [8150-6P10](#) [833-93-034-10-001000](#) [835-43-014-10-001000](#) [851-41-006-10-001000](#) [851-43-008-20-001000](#) [851-43-014-20-001000](#) [851-93-006-20-001000](#) [851-93-010-20-001000](#) [852-10-026-10-001000](#) [853-43-020-10-001000](#) [86.010.0053.0](#) [116-43-306-41-003000](#) [116-43-308-41-007000](#) [116-87-308-41-007101](#) [PX-68LCC](#) [PX-84LCC](#) [121-13-318-41-001000](#) [121-13-320-41-001000](#) [121-13-308-41-001000](#) [123-43-314-41-801000](#) [123-43-420-41-001000](#) [123-43-636-41-001000](#) [123-87-320-41-001101](#) [122-13-316-41-001000](#) [123-13-624-41-001000](#) [123-43-306-41-001000](#) [123-43-322-41-801000](#) [123-43-428-41-001000](#) [123-43-624-41-001000](#) [12-3513-11](#)