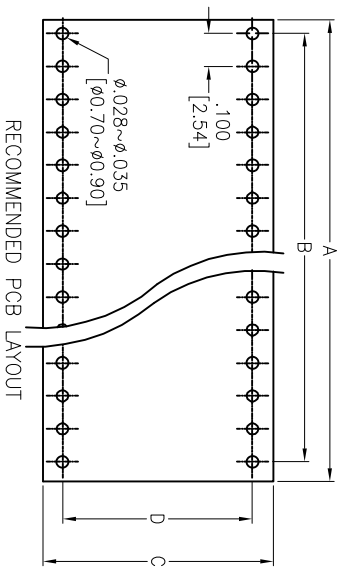
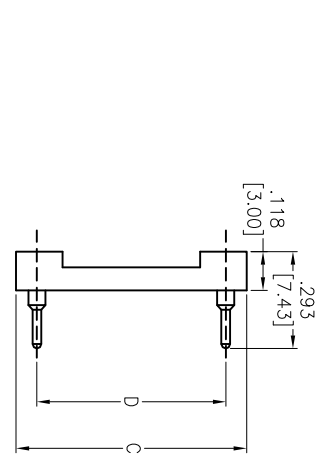
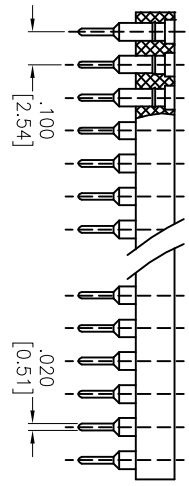
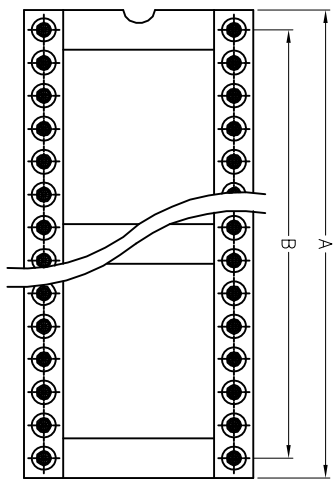


APPROVED: _____
 DATE: _____ TITLE: _____

Rev	AWO #	Description	Date	Appr
-		RELEASED	3/30/05	
A		REVISED & REDRAWN	10/06/11	
B		REVISED SPEC.	10/25/11	
C		REVISED DIM.	03/08/12	



Series	POSITION	A	B	C	D
24	1.20 [30.48]	1.10 [27.94]			
28	1.40 [35.56]	1.30 [33.02]			
32	1.60 [40.64]	1.50 [38.10]			
36	1.80 [45.72]	1.70 [43.18]	.700		
40	2.00 [50.80]	1.90 [48.26]	.600		
42	2.10 [53.34]	2.00 [50.80]	[17.78]	[15.24]	
48	2.40 [60.96]	2.30 [58.42]			
50	2.50 [63.50]	2.40 [60.96]			
52	2.60 [66.04]	2.50 [63.50]			

SPECIFICATIONS:

Material:

Insulator: Glass filled thermoplastic polyester, rated UL 94V-0

Insulator color: Black

Contacts: Brass

Clip: Beryllium copper

Plating:

Gold over Nickel underplate on inner contacts,
 Tin over Copper underplate on outer sleeve

Electrical :

Current rating : 3amps/contact max.

Current resistance : $\leq 4m\Omega$ / contact

Insulation resistance : $\geq 10,000M\Omega$ at 500 VAC

Rated voltage : 100 VRMS / 150VDC

Mechanical :

Operating temperature : -55°C to + 125°C

(Continuous) Tin plated : -40°C to + 105°C

Average insertion force : < 250g

With steel pin of $\phi .017$ [0.43mm]

Average withdrawal force : > 50g

With steel pin of $\phi .017$ [0.43mm]

Mechanical life : min. 200

Environmental:

Lead free, RoHS compliant.



ADAM TECH

909 Railway Avenue, Union, NJ 07083
 Phone: 908-687-5000 Fax: 908-687-5710

SCREW MACHINE IC SOCKET
 .600" ROW SPACING

UNLESS OTHERWISE SPECIFIED ALL DIMENSIONS ARE INCHES [MM]		TITLE	
TOLERANCES: EXCEPT AS NOTED		SCREW MACHINE IC SOCKET	
INCHES		.600" ROW SPACING	
.X	$\pm .10$	ϕ X	$\pm .10$
.XX	$\pm .020$	ϕ XXX	$\pm .015$
.XXX	$\pm .015$	ϕ XXX	$\pm .010$
APPROVALS		DATE	
DRAWN	SS	3/30/05	
CHECKED			
APPROVED			
SIZE	PART NO.	REV.	
X	ICM-6XX-1-GT	C	
REF: S0007T	SCALE: NTS	SHEET 1 OF 1	

X-ON Electronics

Largest Supplier of Electrical and Electronic Components

Click to view similar products for [IC & Component Sockets](#) category:

Click to view products by [Adam](#) manufacturer:

Other Similar products are found below :

[714-43-102-31-012000](#) [0066-3-17-15-30-14-02-0](#) [0134-0-15-15-32-27-04-0](#) [614-DG5](#) [6527-0-00-15-00-00-03-0](#) [670](#) [672](#) [673](#) [712-93-120-41-001000](#) [714-93-104-31-018000](#) [8059-4G1-LF](#) [807-22-001-10-001101](#) [807-22-001-10-003101](#) [807-22-001-10-004101](#) [807-22-001-10-006101](#) [807-22-001-30-011101](#) [807-22-001-30-012101](#) [807-22-001-30-013101](#) [807-22-001-30-014101](#) [8-1437531-4](#) [8150-6P10](#) [833-93-034-10-001000](#) [835-43-014-10-001000](#) [851-41-006-10-001000](#) [851-43-008-20-001000](#) [851-43-014-20-001000](#) [851-93-006-20-001000](#) [851-93-010-20-001000](#) [852-10-026-10-001000](#) [853-43-020-10-001000](#) [86.010.0053.0](#) [116-43-306-41-003000](#) [116-43-308-41-007000](#) [116-87-308-41-007101](#) [PX-68LCC](#) [PX-84LCC](#) [121-13-318-41-001000](#) [121-13-320-41-001000](#) [121-13-308-41-001000](#) [123-43-314-41-801000](#) [123-43-420-41-001000](#) [123-43-636-41-001000](#) [123-87-320-41-001101](#) [122-13-316-41-001000](#) [123-13-624-41-001000](#) [123-43-306-41-001000](#) [123-43-322-41-801000](#) [123-43-428-41-001000](#) [123-43-624-41-001000](#) [12-3513-11](#)