

6

5

4

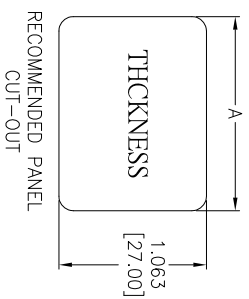
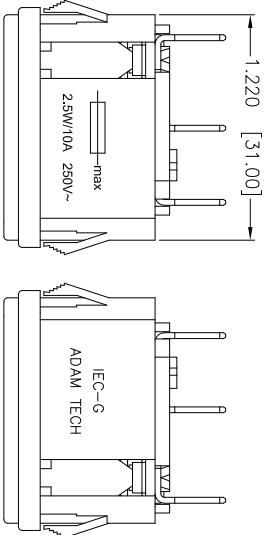
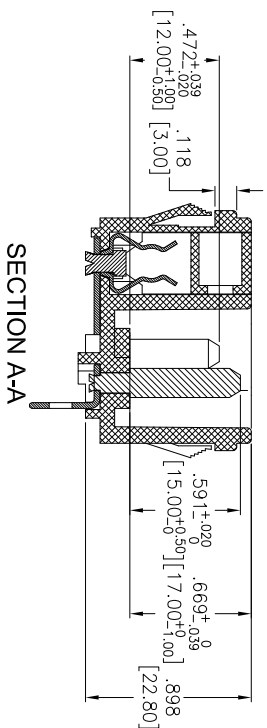
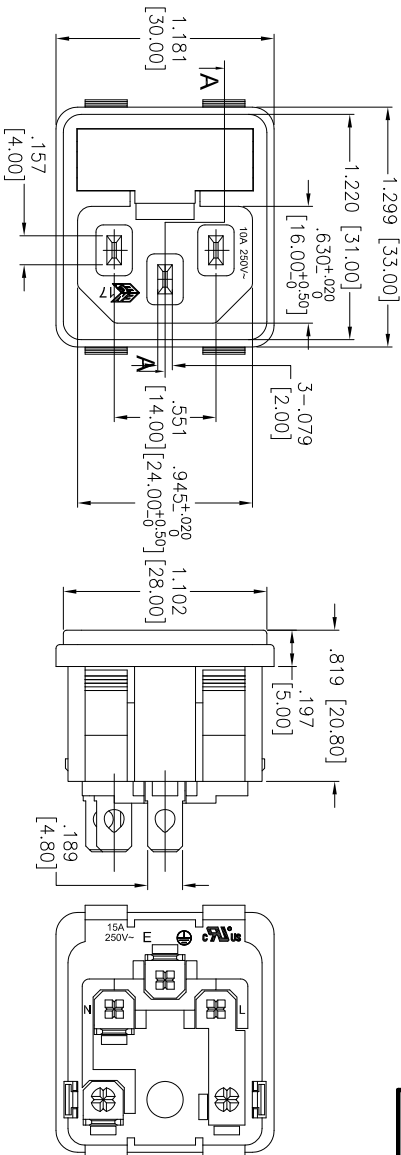
3

2

1

APPROVED: _____
DATE: _____ TITLE: _____

Rev	AWO #	Description	Date	Appr
-		RELEASED	6/17/05	
A		CHANGE TERMINAL	8/15/08	
B		REDRAWN	3/12/09	SS
C		UPDATED MARKINGS	12/18/12	SS
D		REVISED SPEC.	12/20/12	
E		REDRAWN	12/20/12	



PANEL THICKNESS	DIMENSIONS	
	A	
.031-.071 [0.80-1.80]	1.240	[31.50]
.075-.126 [1.90-3.20]	1.248	[31.70]

TERMINAL OPTIONS		
-1	-2	-3
.187 Q.C.	.250 Q.C.	.157 Solder

ADAM TECH

909 Railway Avenue, Union, NJ 07083
Phone: 908-687-5000 Fax: 908-687-5710

TITLE: IEC MALE INLET, SNAP-IN PANEL MOUNT
5 X 20mm FUSE HOLDER

SIZE	PART NO.	REV.
X	IEC-G-X	E
REF:	S00087C	SCALE: NTS
		SHEET 1 OF 1

SPECIFICATIONS:

Material: Insulator: Nylon 66, glass reinforced, rated UL 94V-0
Insulator color: Black
Contacts: Brass
Plating: Tin over Copper underplate overall
Electrical: Operating voltage: 250 VAC
Current rating: UL & CSA: 15 Amps max
ENEC: 10 Amps max
Insulation resistance: 100 Mohms min @ 500 VDC
Dielectric withstanding voltage: 3,000 VAC for 1 minute
Environmental: Lead free, RoHS compliant



A

B

C

D

A

B

C

D

6

5

4

3

2

1

X-ON Electronics

Largest Supplier of Electrical and Electronic Components

Click to view similar products for [AC Power Entry Modules](#) category:

Click to view products by [Adam](#) manufacturer:

Other Similar products are found below :

[0098.0050](#) [6-1609987-9](#) [6167.0002](#) [7-6609955-2](#) [FN389-4-22](#) [FN9233ER-12-06](#) [FN9233S1-10-06](#) [FN9233S1-8-06](#) [FN9233S1B-8-06](#)
[FN9233S1R-1-06](#) [FN9233S1R-12-06](#) [FN9233SB-1-06](#) [FN9233SB-12-06](#) [FN9233SB-8-06](#) [FN9233SR-10-06](#) [FN9233SR-3-06](#) [FN9244B-15-06](#)
[HI](#) [FN9244EB-3-06](#) [FN9244EB-8-06](#) [FN9244ER-15-06](#) [FN9244ER-8-06](#) [FN9244ES1-8-06](#) [FN9244ESB-8-06](#) [FN9244EU-6-06](#)
[FN9244R-12-06](#) [FN9244R-3-07](#) [FN9244R-8-06](#) [FN9244S1-10-06](#) [FN9244S1-12-06](#) [FN9244S1-3-06](#) [FN9244S1B-6-06](#) [FN9244S1R-3-06](#)
[FN9244S-6-06](#) [FN9244SB-10-06](#) [FN9244SB-6-06](#) [FN9244SB-8-06](#) [FN9244SR-10-06](#) [FN9244SR-6-06](#) [FN9244U-3-06](#) [FN9244U-8-06](#)
[FN9260A-6-06](#) [PE00SSSXB](#) [Fuse-H-EUR-1](#) [Fuse-H-USA-1](#) [PM00XD000](#) [PS0SSDBX0](#) [PS0SXSH3B](#) [A-0701-HT-H](#) [RAPC3FG](#) [15EJMS8](#)