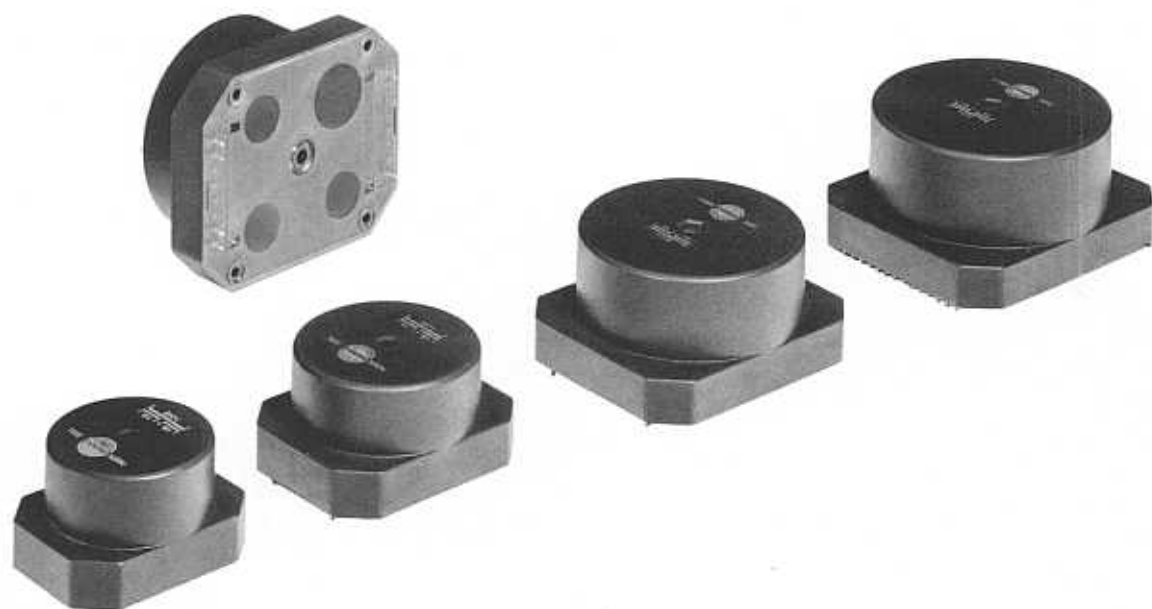


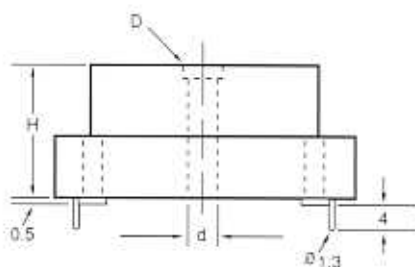
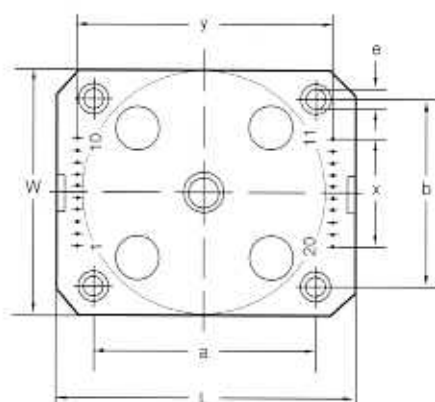
# Standard Toroidal Transformer, PC Mount, 35 VA–160 VA, 230 V or 240V Primary, 50/60 Hz

**Advantages:** Lower strayfield, higher efficiency, reduced "standby" current and lower weight.



Power VA	Dimensions										Weight Kg
	L ± 0.3	W ± 0.2	H ± 0.2	x ± 0.2	y ± 0.2	a ± 0.2	b ± 0.2	d ± 0.2	e ± 0.2	D (Hex) ± 0.2	
35	80.0	63.1	43.3	5 x 5	70	50	50	5.1	3.4	7	0.72
50	90.2	73.2	43.4	7 x 5	80	60	60	5.1	3.4	7	0.72
90	100.0	83.5	43.4	9 x 5	90	70	70	5.1	3.4	7	1.00
110	112.2	93.3	50.5	11 x 5	100	80	80	6.1	3.4	10	1.35
160	120.3	103.3	55.5	13 x 5	110	90	90	6.1	3.4	10	1.80

Power VA	Part Number		Sec. Full Load V	Eff. %	Reg. ΔV @20° C	Schematic	
	115V	230V				Primary	Secondary
35	6400K	6500K	2 x 7	83	18.6		
	6401K	6501K	2 x 9				
	6402K	6502K	2 x 12				
	6403K	6503K	2 x 15				
	6404K	6504K	2 x 18				
	6405K	6505K	2 x 24				
50	6410K	6510K	2 x 7	85	15.2		
	6411K	6511K	2 x 9				
	6412K	6512K	2 x 12				
	6413K	6513K	2 x 15				
	6414K	6514K	2 x 18				
	6415K	6515K	2 x 24				
90	6420K	6520K	2 x 7	89	11.5		
	6421K	6521K	2 x 9				
	6422K	6522K	2 x 12				
	6423K	6523K	2 x 15				
	6424K	6524K	2 x 18				
	6425K	6525K	2 x 24				
110	6430K	6530K	2 x 7	87	10.1		
	6431K	6531K	2 x 9				
	6432K	6532K	2 x 12				
	6433K	6533K	2 x 15				
	6434K	6534K	2 x 18				
	6435K	6535K	2 x 24				
160	6440K	6540K	2 x 7	90	9.5		
	6441K	6541K	2 x 9				
	6442K	6542K	2 x 12				
	6443K	6543K	2 x 15				
	6444K	6544K	2 x 18				
	6445K	6545K	2 x 24				
6446K	6546K	2 x 30					



### Options

- Dual primaries and multiple secondaries with different voltage ratings
- Magnetic and/or electrostatic copper shielding
- Fuses
- Temperature switches

Note: 160VA only – Secondary pin connection for 2 x 7V will be 15+16 - 18+19 and 24+25 - 27+28

## X-ON Electronics

Largest Supplier of Electrical and Electronic Components

*Click to view similar products for [Power Transformers](#) category:*

*Click to view products by [Talema](#) manufacturer:*

Other Similar products are found below :

[1-1672275-3](#) [A41-43-20A20](#) [DST5-120B39](#) [14A-56-36B42](#) [EN2997SE61808F8](#) [9-1611461-2](#) [29768](#) [1654308-1](#) [170R](#) [ST2-12B42](#) [ST3-12B5](#) [ST6118T-R](#) [PE-68421NL](#) [PL2.5-12-130B-C](#) [PoE4W3x5.0-R](#) [POE7W3X3.3-R](#) [4000-20C02K999](#) [4001-09W15AE777](#) [48RO-5000G-SIL](#) [TRA-0130-R](#) [XON7-15/2](#) [47045010](#) [1-1611760-0](#) [EN2997SE61808F9](#) [OPT110F-EAS00004AU](#) [XON25-9/24](#) [XON01349](#) [XON01200](#) [XDCA001/INER01](#) [PE-68414NL](#) [F-91X](#) [F-29U](#) [DST4-16B10](#) [P-8577](#) [T50-24M3](#) [1-1672277-2](#) [1-1672277-0](#) [1-1672275-5](#) [1-1672275-0](#) [PC-24-180B18](#) [750315125](#) [POE13W2VERS-R](#) [PA2380NL](#) [14A-10-12B9](#) [PE-68411NL](#) [750315126](#) [DPC-28-160B50](#) [PA0803NL](#) [750315836](#) [20AMPS-CSTNLKIT](#)