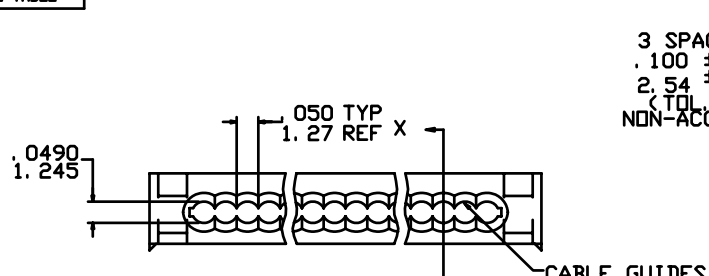


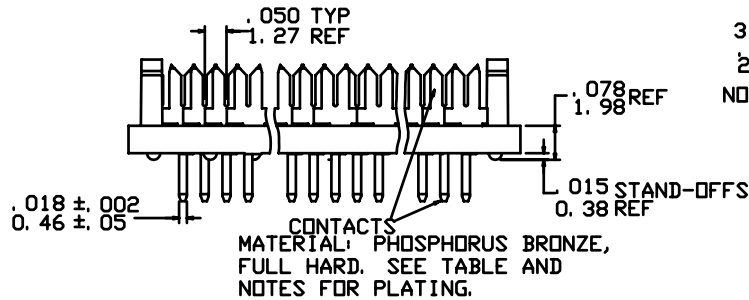
Tous droits strictement réservés. Reproduction ou communication a des tiers interdite sous quelque forme que ce soit sans autorisation écrite du propriétaire.
 Property of ©BERG ELECTRONICS. Copyright ©BERG ELECTRONICS INC. Droits de reproduction BERG ELECTRONICS INC.

All rights strictly reserved. Reproduction or issue to third parties in any form whatever is not permitted without written authority from the proprietor.
 Property of ©BERG ELECTRONICS. Copyright ©BERG ELECTRONICS INC.

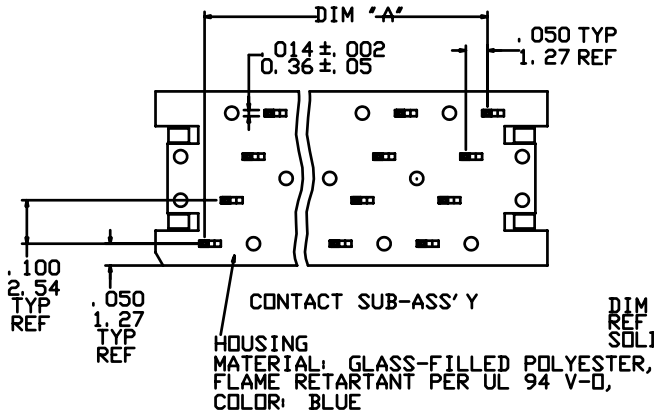
PRODUCT NO.
SEE TABLE



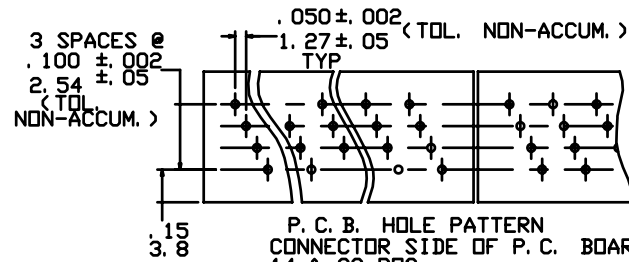
COVER X
 CABLE GUIDES
 MATERIAL: 30% GLASS-FILLED POLYESTER,
 FLAME RETARTANT PER UL 94 V-D,
 COLOR: BLUE



CONTACTS
 MATERIAL: PHOSPHORUS BRONZE,
 FULL HARD. SEE TABLE AND
 NOTES FOR PLATING.

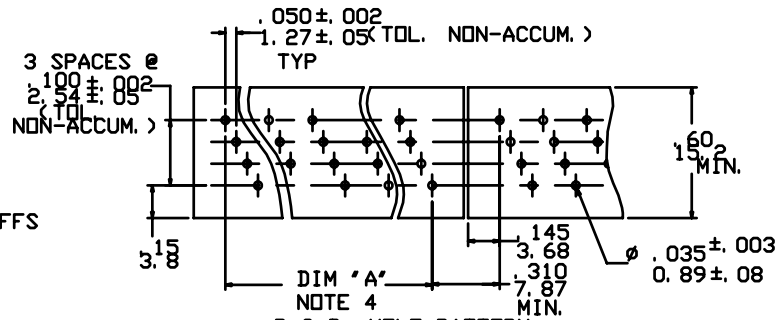


CONTACT SUB-ASS'Y
 HOUSING
 MATERIAL: GLASS-FILLED POLYESTER,
 FLAME RETARTANT PER UL 94 V-D,
 COLOR: BLUE

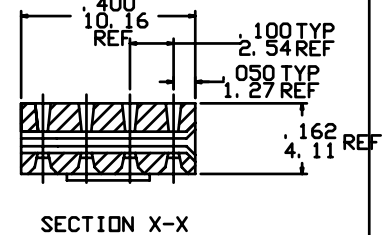
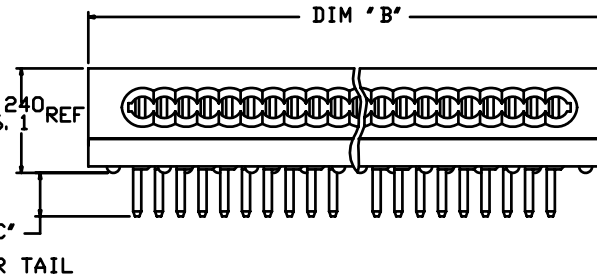


P. C. B. HOLE PATTERN
 CONNECTOR SIDE OF P. C. BOARD SHOWN
 14 & 30 POS.

SCALE 4/1



P. C. B. HOLE PATTERN
 CONNECTOR SIDE OF P. C. BOARD SHOWN (NOTE 3)
 10, 26, 34 & 50 POS.
 SCALE 4/1



SECTION X-X

mat'l. code				tolerances unless otherwise specified		CUSTOMER COPY	BERG ELECTRONICS		
ltr	ecn no	dr	date	linear	.XX ±.01		projection 	title	
P	V11058	JM	6/12/91		.XXX ±.005	QUICKIE P.C.B. CONNECTOR			
R	V50805	LSS	7/5/95	angles	.XXXX ±.0020	INCH/MM 	product family		
S	N05-0123	ZC	5/9/05		0° ±2°		size dwg no		
				dr	J.MUSTARD 6/12/91	scale 2.5:1	A 65495		
				enrg	M.SMYK 6/12/91		code	-	
				chr	W.FUNK 6/12/91		sheet	1 of 2	
				appd	M.SMYK 6/12/91				
sheet index	revision sheet	S	S				cage code		
		1	2				22526		

	NO. OF POS.	DIM 'A'	DIM 'B'	DIM 'C' REF	SEE NOTE
65495-017(LF)	10	. 450/11. 43	. 700/17. 78	. 100/2. 54	1
-018(LF)				2	
-019(LF)				1	
-020(LF)				2	
-021(LF)	26	1. 250/31. 75	1. 500/38. 10	. 100/2. 54	1
-022(LF)				2	
-023(LF)				1	
-024(LF)				2	
-025(LF)	34	1. 650/41. 91	1. 900/48. 26	. 100/2. 54	1
-026(LF)				2	
-027(LF)				1	
-028(LF)				2	
-029(LF)	50	2. 450/62. 23	2. 700/68. 58	. 100/2. 54	1
-030(LF)				2	
-031(LF)				1	
-032(LF)				2	
-033(LF)	14	. 650/16. 51	. 900/22. 86	. 100/2. 54	1
-034(LF)				2	
-035(LF)				1	
-036(LF)				2	
-037(LF)	30	1. 450/36. 83	1. 700/43. 18	. 100/2. 54	1
-038(LF)				2	
-039(LF)				1	
65495-040(LF)				2	

NOTES:

- ① 50u"/1. 27uM MIN. Ni UNDERPLATE OVER ENTIRE TERMINAL.
AND Au FLASH ON SOLDER TAIL ONLY.
- ② 65495-***: 150u"/3. 81uM MIN. TIN/LEAD 93/7 OVER ENTIRE TERMINAL.
50u"/1. 27uM MIN. Ni UNDERPLATE.
65495-***LF: 150u"/3. 81uM MIN. MATTE TIN OVER ENTIRE TERMINAL.
50u"/1. 27uM MIN. Ni UNDERPLATE.
- ③ SEE TA 247 FOR MORE INFORMATION.
4. PATTERN SHOWN FOR CENTER TEN CONTACTS IS TYPICAL FOR ALL CONNECTOR LENGTHS, EXCEPT 14 & 30 POSITIONS.
5. SUB-ASSEMBLY & COVER PACKED SEPARATELY.
6. THE HOUSING OF XXXXX-XYLF WILL WITHSTAND EXPOSURE TO 260°C PEAK TEMPERATURE FOR 10 SECONDS IN A WAVE SOLDER PROCESS.

mat'l. code				tolerances unless otherwise specified		CUSTOMER COPY	BERG ELECTRONICS
ltr	ecn no	dr	date	linear	.XX ±.01/.0±.3		
S				linear	.XXX ±.005/.00±.13	projection 	title QUICKIE P.C.B CONNECTOR 10,14,26,30,34,& 50 POS.
				angles	.xxx ±.0020/.000±.051		
					0° ±2°	INCH/MM 	product family size dwg no
				dr	J.MUSTARD 6/11/91		
				enrg	M.SMYK 6/11/91	scale 1:1	A 65495
				chr	W.FUNK 6/11/91		
				appd	M.SMYK 6/11/91		code -
sheet	revision	S					sheet
index	sheet	2					2 of

X-ON Electronics

Largest Supplier of Electrical and Electronic Components

Click to view similar products for [Headers & Wire Housings](#) category:

Click to view products by [Amphenol](#) manufacturer:

Other Similar products are found below :

[95000-104TRLF](#) [10135584-644402LF](#) [DF62W-EP2022PCA](#) [95000-106TRLF](#) [DF62W-2022SCA](#) [DF62W-EP2022PC](#) [2203348](#) [DF62W-2022SC](#) [1084018](#) [1029039](#) [1084017](#) [802-10-012-10-002000](#) [1112640](#) [1112639](#) [891-007-9SS-BST1T](#) [000-34000](#) [0008550134](#) [0009482033](#) [0009507031](#) [57102-F02-18ULF](#) [57102-S06-03LF](#) [57202-S52-04LF](#) [PCN6-15S-2.5E](#) [0039019024](#) [58102-G61-06LF](#) [582553-1](#) [0009485154](#) [0009508121](#) [0022285053](#) [0050291907](#) [018731A](#) [LY20-4P-DT1-P1E-BR](#) [02.125.8002.8](#) [60101931](#) [60598-1 \(Cut Strip\)](#) [M1625-3R/100](#) [61062-3](#) [61082-181009](#) [CSU011177004](#) [636-1427](#) [638009-1](#) [641938-9](#) [641991-4](#) [644168-1](#) [644827-2](#) [647662-1](#) [65039-019ELF](#) [65692-001LF](#) [65781-018](#) [65781-047](#)