

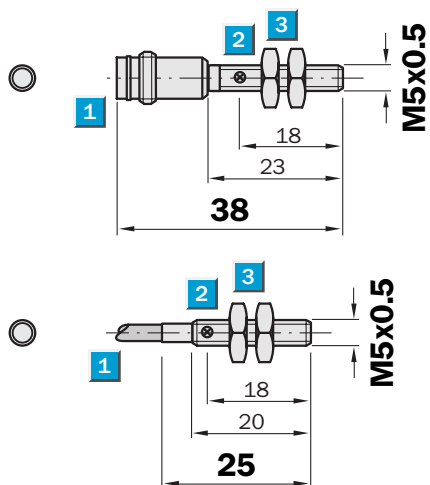
Inductive sensor, IM05, DC 3-wire, Miniature series, Flush

Sensing range
0.8 mm

Inductive sensor

- Can be installed flush
- High switching frequency
- Short-circuit protection (pulsed)
- Robust stainless steel housing with fine thread M5 x 0.5 mm
- Enclosure rating IP 67

Dimensional drawing



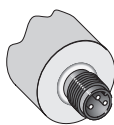
- 1 Connection
- 2 Display LED
- 3 Fastening nuts (2 x); width across 7, stainless steel



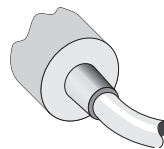
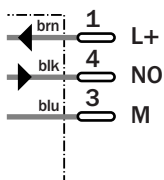
See chapter Accessories
Connector, M8, 3-pin

Connection type

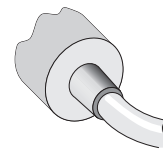
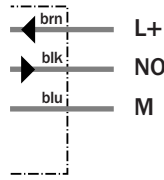
IM05-0B8NS-ZT1	IM05-0B8NS-ZW1	IM05-0B8NO-ZW1
IM05-0B8PS-ZT1	IM05-0B8PS-ZWB	
	IM05-0B8PS-ZW1	



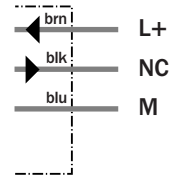
M8, 3-pin



3 x 0.14 mm²



3 x 0.14 mm²



Technical specifications		IM05-	OB8NO-ZW1	OB8NS-ZT1	OB8NS-ZW1	OB8PS-ZT1	OB8PS-ZWB	OB8PS-ZW1				
Sensing range S_n	0.8 mm											
Electrical configuration	DC 3-wire											
Supply voltage V_s	DC 10 ... 30 V											
Ripple U_{pp}	$\leq 20\%$ ¹⁾											
Voltage drop U_d	$\leq 2\text{ V}$ ²⁾											
Power consumption	$\leq 10\text{ mA}$ ³⁾											
Continuous current I_a	$\leq 200\text{ mA}$											
Time delay before availability t_v	$\leq 10\text{ ms}$											
Hysteresis H, of s_r	10 %											
Repeatability R	$\leq 1.5\%$ (U_b and T_a constant)											
Temperature drift, of s_r	$\pm 10\%$											
EMC	According to EN 60947-5-2											
Switching output	NPN											
	PNP											
Output function	Normally closed											
	Normally open											
Installation	Flush											
Connection type	Cable, PVC, 2 m											
	Connector, M8, 3-pin											
	Cable, PVC, 5 m											
Enclosure rating	IP 67 ⁴⁾											
Max. switching frequency	5,000 Hz											
Dimensions	M5 x 0.5 ⁵⁾											
Short-circuit protection	\checkmark ⁶⁾											
Reverse polarity protection	\checkmark											
Power-up pulse suppression	\checkmark											
Shock/vibration stress	30 g, 11 ms/10 ... 55 Hz, 1 mm											
Ambient temperature T_a	-25 °C ... +70 °C											
Housing material	Stainless steel, plastic											
Tightening torque	1.5 Nm											

¹⁾ of U_b
²⁾ at $I_a = 200\text{ mA}$

³⁾ without load
⁴⁾ according to EN 60529

⁵⁾ Thread diameter x pitch (mm)
⁶⁾ (pulsed)

Order information	
Type	Order no.
IM05-OB8NO-ZW1	6 020 157
IM05-OB8NS-ZT1	6 020 158
IM05-OB8NS-ZW1	6 020 155
IM05-OB8PS-ZT1	6 020 110
IM05-OB8PS-ZWB	6 021 575
IM05-OB8PS-ZW1	6 011 591

X-ON Electronics

Largest Supplier of Electrical and Electronic Components

Click to view similar products for [Proximity Sensors](#) category:

Click to view products by [Sick](#) manufacturer:

Other Similar products are found below :

[01.001.5653.1](#) [70.340.1028.0](#) [70.360.2428.0](#) [70.364.4828.0](#) [70.810.1053.0](#) [72.360.1628.0](#) [73.363.6428.0](#) [9221350022](#) [980659-1](#) [QT-12](#)
[E2EX10D1NN](#) [E2E-X14MD1-G](#) [E2E-X2D1-G](#) [E2EX2ME2N](#) [E2E-X3D1-N](#) [10M](#) [E2E-X4MD1-G](#) [E2FMX1R5D12M](#) [E2K-F10MC1](#) [5M](#)
[EI1204TBOSL-6](#) [EI5515NPAP](#) [BSA-08-25-08](#) [IC08ANC15PO-K](#) [IMM2582C](#) [25.161.3253.0](#) [25.332.0653.1](#) [25.352.0653.0](#) [25.352.0753.0](#)
[25.523.3253.0](#) [9151710023](#) [922FS1.5C-A4P-Z774](#) [SC606ABV0S30](#) [SM952A126100LE](#) [SM956A132600](#) [A1220EUA-T](#) [F3S-A162-U](#) [CL18](#)
[QT-08L](#) [34.110.0010.0](#) [TL-C2MF1-M3-E4](#) [IA08BLF15NOM5](#) [IA08BSF15NOM5](#) [IA12ASF04DOM1](#) [IMM32188C](#) [IS2](#) [IS31SE5000-](#)
[UTLS2-TR](#) [34.110.0021.0](#) [34.110.0022.0](#) [CA150-120VACDC](#) [VM18VA3000Q](#) [XS508BSCBL2](#)