

## NTE1934 Integrated Circuit Positive Voltage Regulator, 5V, 2A

**Features:**

- 3 Pin Plastic Package TO3P
- Precise Setting Voltage of  $\pm 2\%$
- Wide Input Voltage Range ( $\sim 45V$ )
- Built-in Current Foldback Protection
- Ideal Combination of Passivated Power Transistor and High Reliability Flip-Chip Circuit

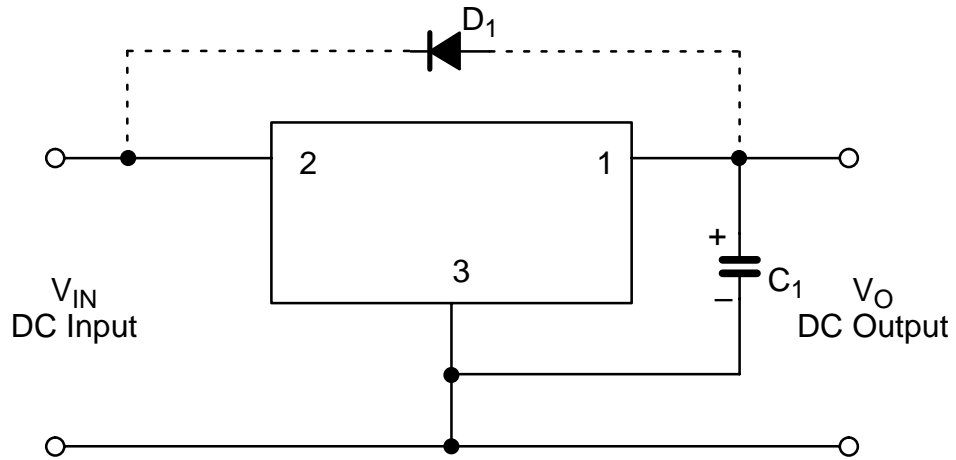
**Absolute Maximum Ratings:** ( $T_A = +25^\circ C$  unless otherwise specified)

DC Input Voltage, $V_{IN}$ .....	45V
Power Dissipation, $P_C$ ( $T_C = +25^\circ C$ ) .....	50W
(No Fin) .....	2W
Thermal Resistance, Junction-to-Case, $R_{thJC}$ .....	$2^\circ C/W$
Junction Temperature Range, $T_j$ .....	$-30^\circ$ to $+125^\circ C$
Operating Ambient Temperature Range, $T_{op}$ .....	$-20^\circ$ to $+80^\circ C$
Storage Temperature Range, $T_{stg}$ .....	$-30^\circ$ to $+125^\circ C$

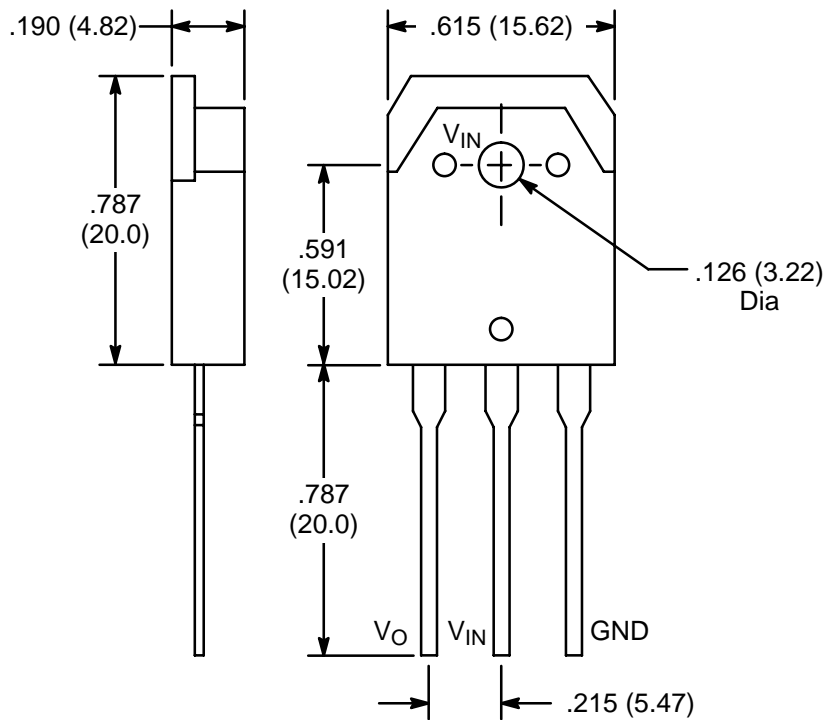
**Electrical Characteristics:** ( $T_A = +25^\circ C$  unless otherwise specified)

Parameter	Symbol	Test Conditions	Min	Typ	Max	Unit
DC Input Voltage	$V_{IN}$	$I_O = 2A$	8	–	30	V
Output Voltage	$V_O$	$V_{IN} = 10V, I_O = 0.5A$	4.9	5.0	5.1	V
Output Current	$I_O$		0	–	2	A
Line Regulation	$\Delta V_{LINE}$	$V_{IN} = 8.5V$ to $11.5V, I_O = 0.5A$	–	2	10	mV
Load Regulation	$\Delta V_{LOAD}$	$V_{IN} = 10V, I_O = 0$ to $2A$	–	40	100	mV
Temperature Coefficient	$K_t$		–	$\pm 0.5$	–	mV/ $^\circ C$
Ripple Rejection		100 to 120Hz	–	60	–	dB
Foldback Current	$I_{S1}$		2.4	–	–	A
Short-Circuit Current	$I_{S2}$		–	–	0.6	A

External Circuit



- Note 1. Output capacitor  $C_1$  (47 to 100 $\mu$ f) shall be connected directly to output terminal (Pin1) and GND terminal (Pin3) as shown above.
- Note 2. When wiring between the regulator and the load is long, another capacitor (47 to 100 $\mu$ f) shall be added in parallel with the load.
- Note 3. If there is a possibility of reverse biasing between input and output, a protection diode ( $D_1$ ) is to be added. The recommended diode for  $D_1$  is NTE116.



## X-ON Electronics

Largest Supplier of Electrical and Electronic Components

*Click to view similar products for [Linear Voltage Regulators](#) category:*

*Click to view products by [NTE manufacturer](#):*

Other Similar products are found below :

[LV56831P-E](#) [LV5684PVD-XH](#) [MCDTSA6-2R](#) [L4953G](#) [L7815ACV-DG](#) [PQ3DZ53U](#) [LV56801P-E](#) [TCR3DF13,LM\(CT](#)  
[TCR3DF39,LM\(CT](#) [TLE42794G](#) [L78L05CZ/1SX](#) [L78LR05DL-MA-E](#) [L78MR05-E](#) [033150D](#) [033151B](#) [090756R](#) [636416C](#)  
[NCV78M15BDTG](#) [702482B](#) [714954EB](#) [TLE42794GM](#) [TLE42994GM](#) [ZMR500QFTA](#) [BA033LBSG2-TR](#) [NCV78M05ABDTRKG](#)  
[NCV78M08BDTRKG](#) [NCP7808TG](#) [NCV571SN12T1G](#) [LV5680P-E](#) [CAJ24C256YI-GT3](#) [L78M15CV-DG](#) [L9474N](#)  
[TLS202B1MBV33HTSA1](#) [L79M05T-E](#) [NCP571SN09T1G](#) [MAX15006AASA/V+](#) [MIC5283-5.0YML-T5](#) [L4969URTR-E](#) [L78LR05D-MA-E](#)  
[NCV7808BDTRKG](#) [L9466N](#) [NCP7805ETG](#) [SC7812CTG](#) [NCV7809BTG](#) [NCV571SN09T1G](#) [NCV317MBTG](#) [MC78M15CDTT5G](#)  
[MC78M12CDTT5G](#) [L9468N](#) [LT1054IS8#TRPBF](#)