



**ELECTRONICS, INC.**  
 44 FARRAND STREET  
 BLOOMFIELD, NJ 07003  
 (973) 748-5089

## NTE2343 (NPN) & NTE2344 (PNP) Silicon Complementary Transistors Darlington Power Amp, Switch

### Absolute Maximum Ratings:

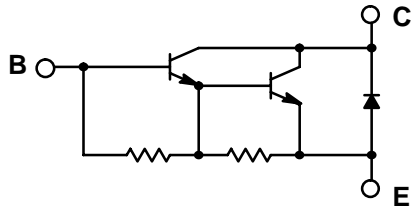
Collector–Base Voltage, $V_{CBO}$ .....	120V
Collector–Emitter Voltage, $V_{CEO}$ .....	120V
Collector Current, $I_C$	
DC .....	12A
Pulse .....	15A
Base Current, $I_B$ .....	200mA
Collector Dissipation ( $T_C = +25^\circ\text{C}$ ), $P_C$ .....	80W
Operating Junction Temperature, $T_J$ .....	+150°C
Storage Temperature Range, $T_{stg}$ .....	–65° to +150°C
Thermal Resistance, Junction–to–Case, $R_{thJC}$ .....	1.56°C/W

### Electrical Characteristics: ( $T_A = +25^\circ\text{C}$ unless otherwise specified)

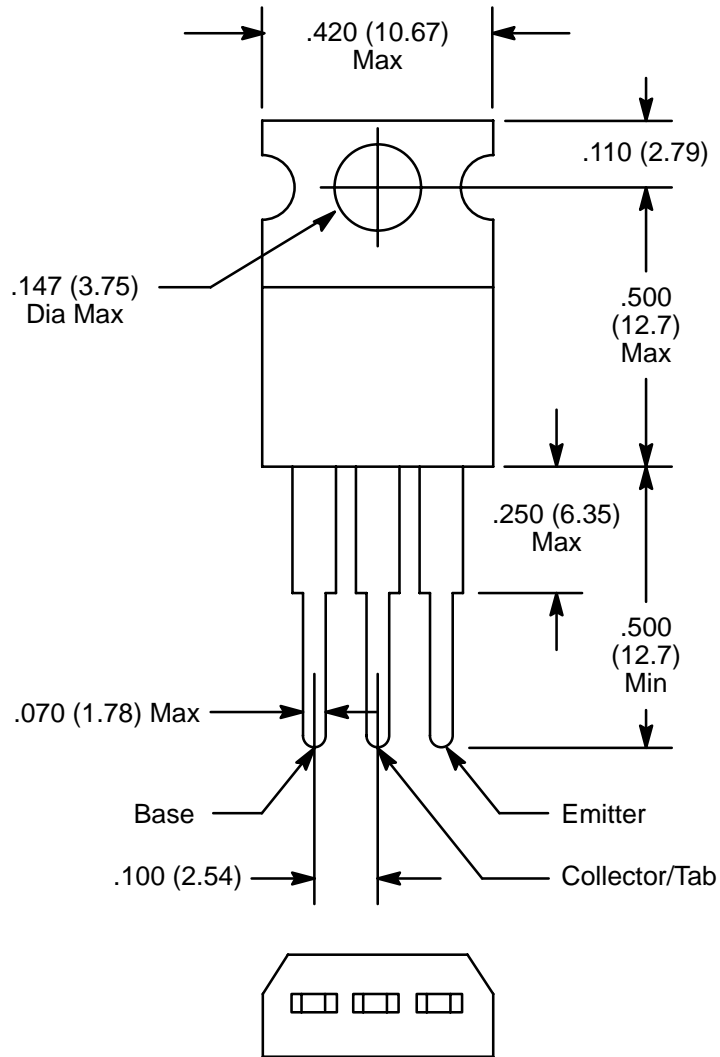
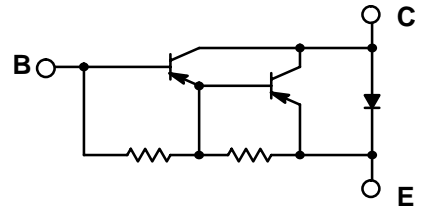
Parameter	Symbol	Test Conditions	Min	Typ	Max	Unit
Collector–Emitter Sustaining Voltage	$V_{CEO(sus)}$	$I_C = 100\text{mA}$ , $I_B = 0$ , Note 1	100	–	–	V
Collector Cutoff Current	$I_{CBO}$	$V_{CB} = 100\text{V}$ , $I_E = 0$	–	–	100	$\mu\text{A}$
	$I_{CEO}$	$V_{CE} = 100\text{V}$ , $I_B = 0$	–	–	1	mA
Emitter Cutoff Current	$I_{EBO}$	$V_{EB} = 5\text{V}$ , $I_C = 0$	–	–	2	mA
DC Current Gain	h <sub>FE</sub>	$V_{CE} = 3\text{V}$ , $I_C = 3\text{A}$	1000	–	–	
		$V_{CE} = 3\text{V}$ , $I_C = 5\text{A}$	750	–	1000	
		$V_{CE} = 3\text{V}$ , $I_C = 10\text{A}$	100	–	–	
Collector–Emitter Saturation Voltage	$V_{CE(sat)}$	$I_C = 5\text{A}$ , $I_B = 20\text{mA}$ , Note 1	–	–	2.0	V
		$I_C = 10\text{A}$ , $I_B = 100\text{mA}$ , Note 1	–	–	3.0	V
Base–Emitter Saturation Voltage	$V_{BE(sat)}$	$I_C = 5\text{A}$ , $I_B = 20\text{mA}$ , Note 1	–	–	2.5	V
		$I_C = 10\text{A}$ , $I_B = 100\text{mA}$ , Note 1	–	–	4.0	V
Parallel Diode Forward Voltage	$V_f$	$I_f = 5\text{A}$ , Note 1	–	1.3	2.0	V
		$I_f = 10\text{A}$ , Note 1	–	1.8	4.0	V
Small–Signal Current Gain	h <sub>fe</sub>	$I_C = 1\text{A}$ , $V_{CE} = 10\text{V}$ , $f = 1\text{MHz}$	20	–	–	

Note 1. Pulse Test: Pulse Width = 300 $\mu\text{s}$ , Duty Cycle = 1.5%.

**NTE2343**  
(NPN)



**NTE2344**  
(PNP)



## X-ON Electronics

Largest Supplier of Electrical and Electronic Components

*Click to view similar products for [Darlington Transistors](#) category:*

*Click to view products by [NTE manufacturer](#):*

Other Similar products are found below :

[281287X](#) [SMMBT6427LT1G](#) [2N7371](#) [BDV64B](#) [JANTXV2N6287](#) [028710A](#) [SMMBTA64LT1G](#) [2N6350](#) [2SB1214-TL-E](#)  
[SMMBTA14LT1G](#) [SBSP52T1G](#) [NJVMJD117T4G](#) [Jantx2N6058](#) [2N6353](#) [LB1205-L-E](#) [500-00005](#) [2N6053](#) [NJVMJD112G](#) [Jan2N6350](#)  
[Jantx2N6352](#) [Jantx2N6350](#) [BULN2803LVS](#) [ULN2001N](#) [2SB1383](#) [2SB1560](#) [2SB852KT146B](#) [TIP112TU](#) [TIP122TU](#) [BCV27](#) [MMBTA13-](#)  
[TP](#) [MMBTA14-TP](#) [MMSTA28T146](#) [BSP50H6327XTSA1](#) [KSH122TF](#) [NTE2557](#) [NJVNJD35N04T4G](#) [TIP115](#) [MPSA29-D26Z](#) [MJD127T4](#)  
[FJB102TM](#) [BCV26E6327HTSA1](#) [BCV46E6327HTSA1](#) [BCV47E6327HTSA1](#) [BSP61H6327XTSA1](#) [BU941ZPFI](#) [2SB1316TL](#) [2SD1980TL](#)  
[NTE2350](#) [NTE245](#) [NTE246](#)