



ELECTRONICS, INC.
 44 FARRAND STREET
 BLOOMFIELD, NJ 07003
 (973) 748-5089

NTE971

Linear Integrated Circuit Voltage Regulator, Negative, -24V, 1A

Description:

The NTE924 fixed-voltage regulator is a monolithic integrated circuit in a TO220 type package designed for use in a wide variety of applications including local, on-card regulation. This regulator employs internal current limiting, thermal shutdown, and safe-area compensation. With adequate heat sinking it can deliver output currents in excess of 1A. Although designed primarily as a fixed regulator, this device can be used with external components to obtain adjustable voltages and currents.

Features:

- No External Components Required
- Internal Thermal Overload Protection
- Internal Short-Circuit Current Limiting
- Output Transistor Safe-Area Compensation

Absolute Maximum Ratings: ($T_A = +25^\circ\text{C}$ unless otherwise specified)

Input Voltage, V_{IN}	-40V
Internal Power Dissipation, P_D	Internally Limited
Derate Above $+25^\circ\text{C}$	15.4mW/ $^\circ\text{C}$
Internal Power Dissipation ($T_C = +25^\circ\text{C}$), P_D	Internally Limited
Derate Above $+75^\circ\text{C}$	200mW/ $^\circ\text{C}$
Maximum Junction Temperature Range, T_J	-55° to $+150^\circ\text{C}$
Storage Temperature Range, T_{stg}	-65° to $+150^\circ\text{C}$
Thermal Resistance, Junction-to-Ambient, R_{thJA}	65 $^\circ\text{C}/\text{W}$
Thermal Resistance, Junction-to-Case, R_{thJC}	5 $^\circ\text{C}/\text{W}$

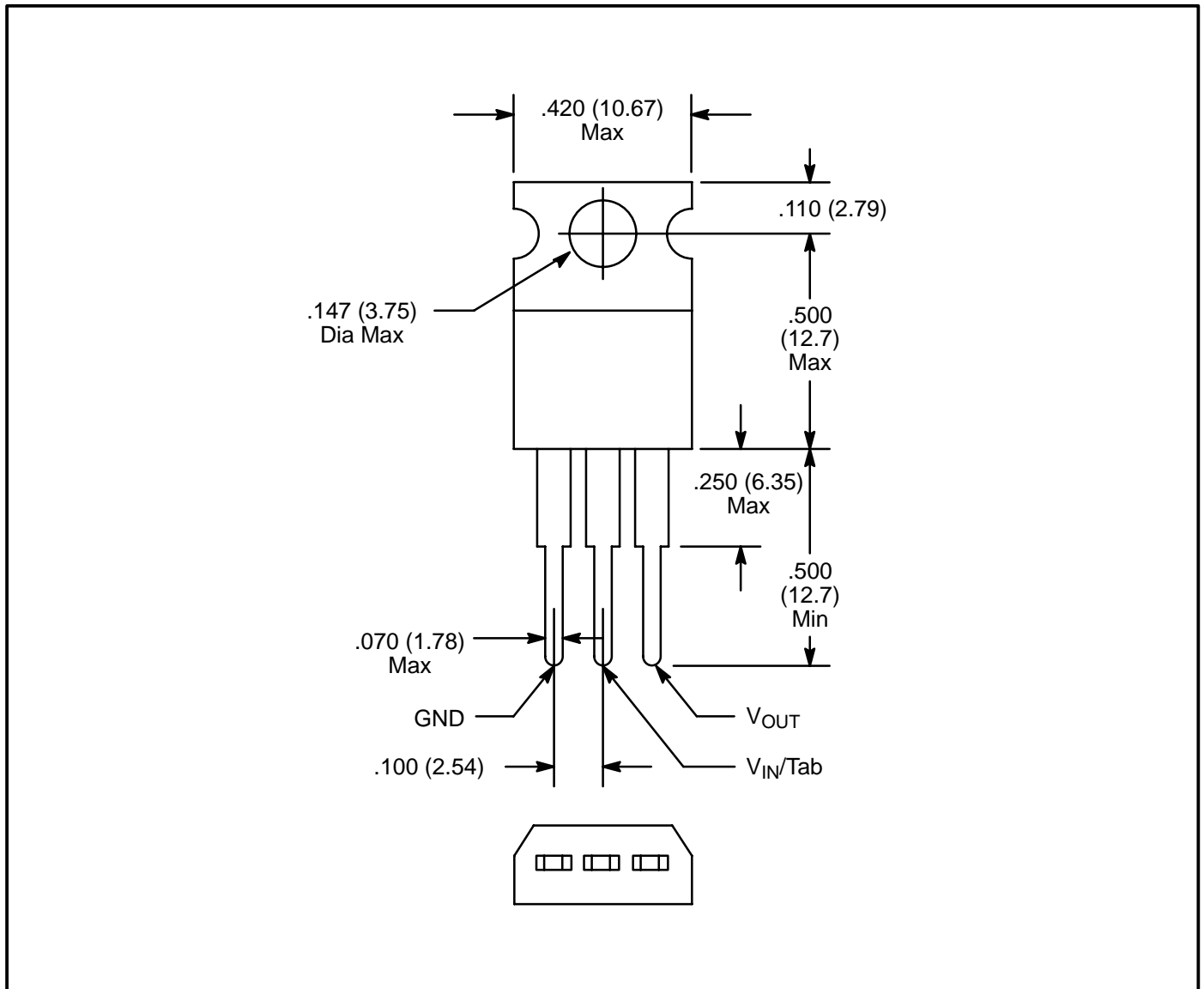
Electrical Characteristics: ($V_{IN} = -33\text{V}$, $I_O = 500\text{mA}$, $T_J = 0^\circ$ to $+125^\circ\text{C}$ unless otherwise specified)

Parameter	Symbol	Test Conditions	Min	Typ	Max	Unit	
Output Voltage	V_O	$T_J = +25^\circ\text{C}$	-23.0	-24.0	-25.0	V	
		$5\text{mA} \leq I_O \leq 1\text{A}$, $P_O \leq 15\text{W}$, $-38\text{V} \leq V_{IN} \leq -27\text{V}$	-22.8	-24.0	-25.2	V	
Line Regulation	Reg_{Line}	$T_J = +25^\circ\text{C}$, Note 1	$-38\text{V} \leq V_{IN} \leq -27\text{V}$	-	31	480	mV
			$-36\text{V} \leq V_{IN} \leq -30\text{V}$	-	14	240	
Load Regulation	Reg_{Load}	$T_J = +25^\circ\text{C}$, Note 1	$5\text{mA} \leq I_O \leq 1.5\text{A}$	-	60	480	mV
			$250\text{mA} \leq I_O \leq 750\text{mA}$	-	25	240	

Electrical Characteristics: ($V_{IN} = -33V$, $I_O = 500mA$, $T_J = 0^\circ$ to $+125^\circ C$ unless otherwise specified)

Parameter	Symbol	Test Conditions	Min	Typ	Max	Unit
Quiescent Current	I_B	$T_J = +25^\circ C$	-	4.6	8.0	mA
Quiescent Current Change	ΔI_B	$-38V \leq V_{IN} \leq -27V$	-	-	1.0	mA
		$5mA \leq I_O \leq 1A$	-	-	0.5	
Ripple Rejection	RR	$38V \leq V_{IN} \leq 28V$, $f = 120Hz$	-	54	-	dB
Dropout Voltage	$V_{IN} - V_O$	$T_J = +25^\circ C$, $I_O = 1A$	-	2.0	-	V
Output Noise Voltage	V_n	$T_A = +25^\circ C$, $10Hz \leq f \leq 100kHz$	-	10	-	$\mu V/V_O$
Output Resistance	r_O	$f = 1kHz$	-	20	-	$m\Omega$
Short-Circuit Current Limit	I_{sc}	$T_A = +25^\circ C$, $V_{IN} = 35V$	-	0.2	-	A
Peak Output Current	I_{max}	$T_J = +25^\circ C$	-	2.2	-	A
Average Temperature Coefficient of Output Voltage	TCV_O		-	-1.5	-	$mV/^\circ C$

Note 1. Load and line regulation are specified at constant junction temperature. Changes in V_O due to heating effects must be taken into account separately. Pulse testing with low duty cycle is used.



X-ON Electronics

Largest Supplier of Electrical and Electronic Components

Click to view similar products for [Linear Voltage Regulators](#) category:

Click to view products by [NTE manufacturer](#):

Other Similar products are found below :

[LV56831P-E](#) [LV5684PVD-XH](#) [MCDTSA6-2R](#) [L4953G](#) [L7815ACV-DG](#) [PQ3DZ53U](#) [LV56801P-E](#) [TCR3DF13,LM\(CT](#)

[TCR3DF39,LM\(CT](#) [TLE42794G](#) [L78L05CZ/1SX](#) [L78LR05DL-MA-E](#) [L78MR05-E](#) [033150D](#) [033151B](#) [090756R](#) [636416C](#)

[NCV78M15BDTG](#) [702482B](#) [714954EB](#) [TLE42794GM](#) [TLE42994GM](#) [ZMR500QFTA](#) [BA033LBSG2-TR](#) [NCV78M05ABDTRKG](#)

[NCV78M08BDTRKG](#) [NCP7808TG](#) [NCV571SN12T1G](#) [LV5680P-E](#) [CAJ24C256YI-GT3](#) [L78M15CV-DG](#) [L9474N](#)

[TLS202B1MBV33HTSA1](#) [L79M05T-E](#) [NCP571SN09T1G](#) [MAX15006AASA/V+](#) [MIC5283-5.0YML-T5](#) [L4969URTR-E](#) [L78LR05D-MA-E](#)

[NCV7808BDTRKG](#) [L9466N](#) [NCP7805ETG](#) [SC7812CTG](#) [NCV7809BTG](#) [NCV571SN09T1G](#) [NCV317MBTG](#) [MC78M15CDTT5G](#)

[MC78M12CDTT5G](#) [L9468N](#) [LT1054IS8#TRPBF](#)