

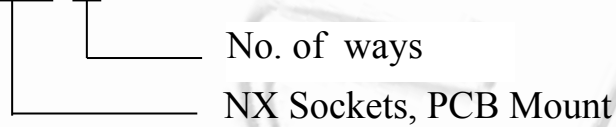
NX Sockets, PCB Mount, 2.0 mm Pitch



Specification:

- 1) Voltage Rating: 100V AC
- 2) Current Rating: 2A
- 3) Contact Resistance: 20m Ω max.
- 4) Dielectric Withstandeing Voltage: 800V AC/1min.
- 5) Insutation Resistance: 1000 M Ω min.
- 6) Material Insutation: Nylon 66 (UL 94V-0)
- 7) Material Contact: Brass
- 8) Plating: Tin
- 9) Temperature Range: -25°C ~ +85°C

NXW-02



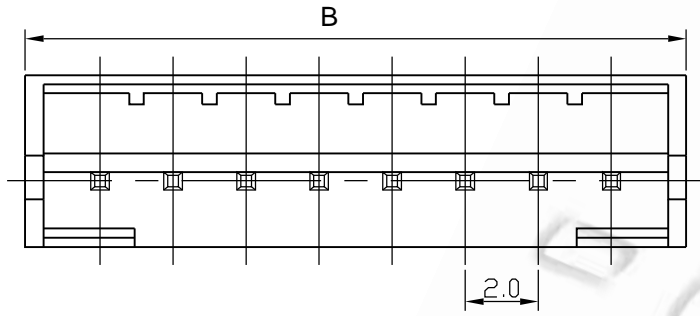
No of ways Dimension mm (inch)

	A	B
2	2.0 (0.079)	6.1 (0.240)
3	4.0 (0.157)	8.1 (0.318)
4	6.0 (0.236)	10.1 (0.397)
5	8.0 (0.315)	12.1 (0.476)
6	10.0 (0.394)	14.1 (0.555)
7	12.0 (0.472)	16.1 (0.634)
8	14.0 (0.551)	18.1 (0.713)
9	16.0 (0.630)	20.1 (0.791)
10	18.0 (0.709)	22.1 (0.870)
11	20.0 (0.787)	24.1 (0.949)
12	22.0 (0.886)	26.1 (1.028)
13	24.0 (0.945)	28.1 (1.106)
14	26.0 (1.024)	30.1 (1.185)
15	28.0 (1.102)	32.1 (1.263)
16	30.0 (1.181)	34.1 (1.343)
17	32.0 (1.259)	36.1 (1.421)
18	34.0 (1.338)	38.1 (1.500)
19	36.0 (1.417)	40.1 (1.579)
20	38.0 (1.496)	42.1 (1.657)

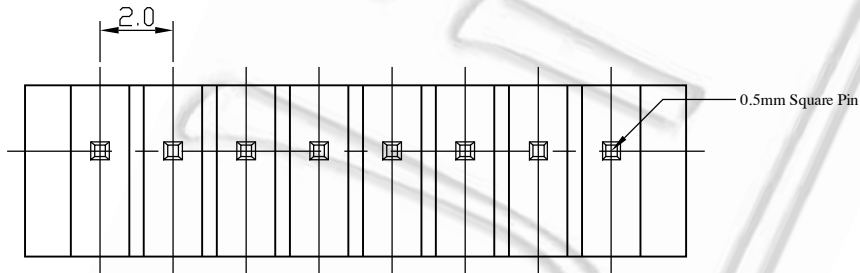
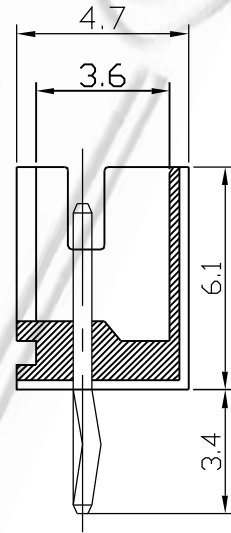
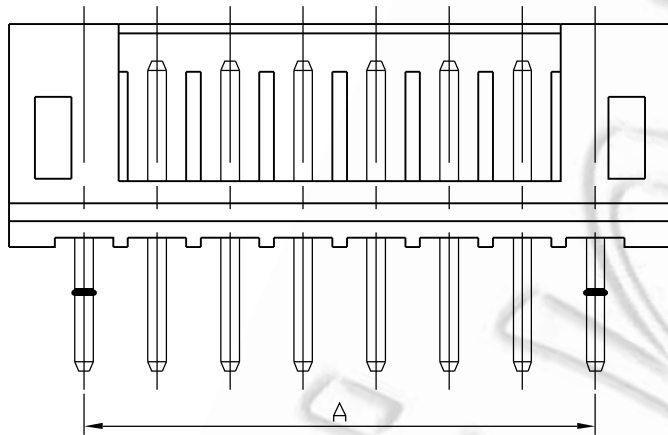
Ninigi

D A T A S H E E T

NX Sockets, PCB Mount, 2.0 mm Pitch



RECOMMENDED P.C. BOARD HOLE DIMM.



X-ON Electronics

Largest Supplier of Electrical and Electronic Components

Click to view similar products for [I/O Connectors](#) category:

Click to view products by [Ninigi](#) manufacturer:

Other Similar products are found below :

[571763P](#) [58098-0628](#) [61-168618-12P](#) [D38999/20FJ24PA L/C](#) [D38999/20FJ29SB L/C](#) [D38999/24FG11SN L/C](#) [72.250.1628.2](#) [72.250.2428.2](#)
[74720-0505](#) [747680210](#) [76.350.0729.0](#) [76871-1403](#) [FCN-244F080-G/1](#) [FCN-260A9920](#) [FCN-268D024-G/2F#10X-R10](#) [MP-5T180MUNNA-005](#) [MP-5XRJ45UNNB-003](#) [PCS-E50FA](#) [PCS-XE26LKA](#) [PCS-XE26MA+](#) [PCS-XES68MS+](#) [G38A71314B](#) [91-569719-35R](#) [9776-18-6](#)
[DX40-50P\(55\)](#) [1571250010](#) [157-22500-3](#) [MS3471L14-19P L/C](#) [MS3476W12-10S L/C](#) [171224-6031](#) [1888020-8](#) [91-569786-35H](#) [91-569786-35M](#) [91-644626-35P](#) [172501-4002](#) [172501-6002](#) [FCN-260C008-A/L0](#) [FCN-260C024-AL0](#) [FCN-261Z008](#) [FCN-268D008-G/1K](#) [2000314-1](#)
[200331-1](#) [2007498-2](#) [PCR-E28LMDAG1+](#) [PCR-E36FC+](#) [PCS-E28FS+](#) [PCS-XE26SLFD+](#) [PCS-XE26SLFDT+](#) [G38A71214B](#) [HDRA-E68W1LFDTC-SL+](#)