

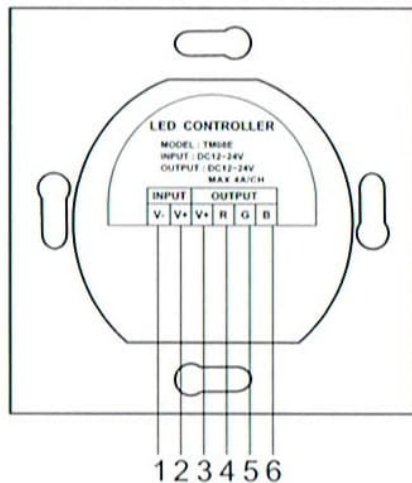
USER MANUAL



I. Main technical parameters

- Working temperature: -20-60°C
- Power supply voltage: DC 12~24V
- Output: 3 channel
- Connect way: common anode
- Output current: < 4A(each channel)
- Output power: 12V:< 144W, 24V:< 288W
- Static power consumption: <1W
- Net weight: 130g
- Gross weight: 181g
- External dimension: L80XW80XH41.8 mm
- Packing size: L105XW105XH53mm

II. Interface instruction

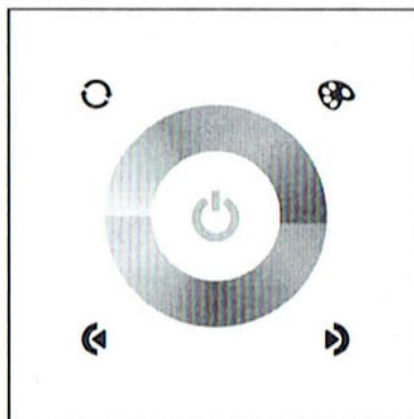


INPUT: power input pin, the range of input voltage is 12-24V, "1" is cathode, "2" is anode.

OUTPUT: power output pin, output voltage is 12-24V, output maximum current is 4A, "3" is anode, "4" is red light interface, "5" is green light interface, "6" is blue light interface.

III. operating instructions

1. Button function instruction



: Touch the color wheel, whether in a static or dynamic mode will switch to touch the ring on the corresponding static color.



: Under any state, can open or close controller output; when controller in open state, long press this key more than 3s, can open or close the buzzer output.



: 19 kinds of dynamic mode Loop switch.



: 20 kinds of static mode loop switch.



: Static state brightness minus, 25 levels, dynamic state speed minus, 100 levels.



: Static state brightness add, 25 levels, dynamic state speed add, 100 levels.

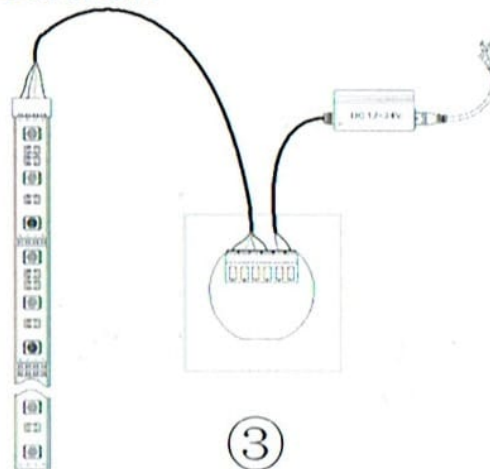
Dynamic state mode as below:

No.	Modes	No.	Modes	No.	Modes
1	Red burst flashing	8	Three color jumpy changing	15	Purple fade in and out
2	Green burst flashing	9	Six color jumpy changing	16	White fade in and out
3	Blue burst flashing	10	Red fade in and out	17	Three color fade in and out
4	Yellow burst flashing	11	Yellow fade in and out	18	Seven color fade in and out
5	White burst flashing	12	Green fade in and out	19	Seven color gradual changing
6	Three color burst flashing	13	Cyan fade in and out		
7	Three color flash	14	Blue fade in and out		

Static state mode as below:

No.	Modes	No.	Modes	No.	Modes
1	Red	8	Cyan	15	Brown
2	Orange	9	Light blue	16	White
3	Deep yellow	10	Sky blue	17	Milk white
4	Yellow	11	Blue	18	Pink white
5	Pale yellow	12	Dark blue	19	yellowish white
6	Green	13	Lyons blue	20	blue-white
7	Light green	14	Purple		

IV. Typical Application



V. Installation Method

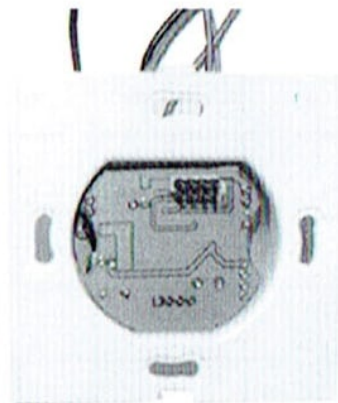
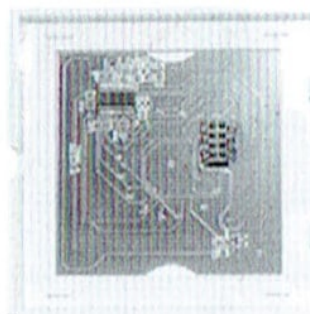
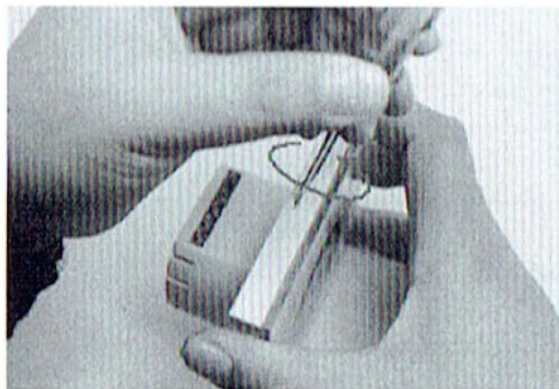
1. Wiring

In the Typical Application. Reference typical application circuit.



2. Open the touch panel

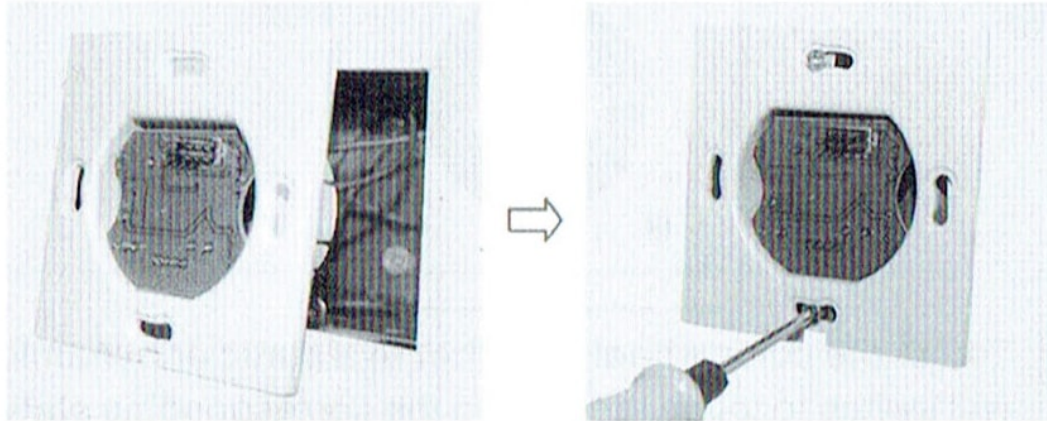
As shown in figure, use screwdriver in touch panel gently pry gaps, take the panel.



④

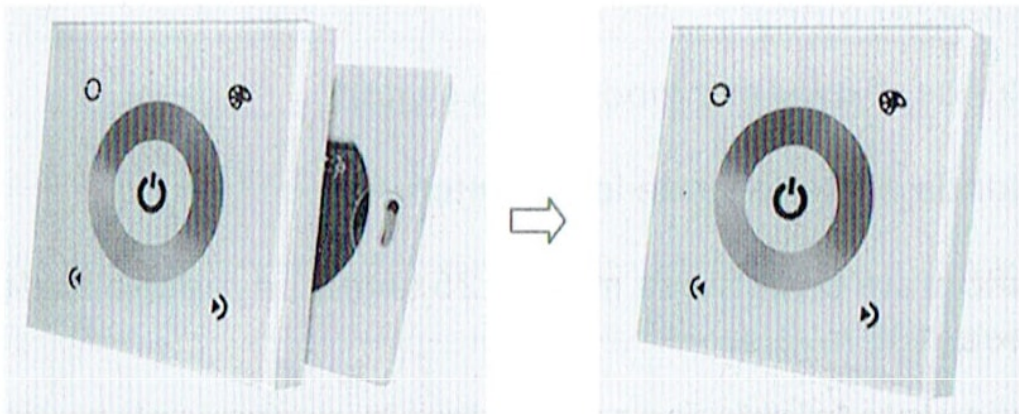
3. Installation switch base

As shown in figure, connected line will touch installed on the wall in the cassette controller, screw in screw, make fixed in the wall, will be installed base to the wall.



4. Cover touch panel

Look the panel direction, then cover panel, as shown in the figure.



⑤

VI. Remark

1. Connect the load wire at first, following by the power wire; **Please ensure short circuit can not occur between connecting wire before you turn on the power.**

2. Power supply voltage range is DC12~24V, more than voltage range maybe will burnout the controller.

X-ON Electronics

Largest Supplier of Electrical and Electronic Components

Click to view similar products for [LED Displays & Accessories](#) category:

Click to view products by [Optoflash](#) manufacturer:

Other Similar products are found below :

[LTC-2721WC](#) [LTC-4624JD](#) [LTC-4627G](#) [LTC-4627WC](#) [LTD-5021AWC](#) [LTM-8522G](#) [LTP-4323P](#) [LTP-747G](#) [LTS-3361JG-06](#)
[F416SYGWA/S530-E3](#) [EADST040RA2](#) [1668](#) [HT-F196NB-5323](#) [IPD2131-27](#) [SA03-12EWA](#) [LDD-E2802RD](#) [LDD-E306MI](#) [LDQ-N514RI](#)
[LDS-A3506RD](#) [LDS-A3926RI](#) [LDT-M516RI](#) [SC03-12HDB](#) [SI-B9T151550WW](#) [SI-B9V171550WW](#) [SLC-3PF-WL](#) [1624](#) [LTC-2621JD](#)
[LTC-2623WC](#) [LTC-4624P](#) [LTC-4627JD](#) [LTD-2601E](#) [LTD-322G](#) [LTD-482PC](#) [LTP-1457AKR](#) [LTP-3784G-01](#) [LTS-313AP](#) [LTS-4812SKR-](#)
[P](#) [LTS-547AE](#) [LTS-6780P](#) [446010401-3](#) [HV-7W30-6829](#) [CA12240_MINNIE-WWW-MTG-ASSY](#) [DA43-11GWA](#) [LDD-A516RI-17](#) [LDD-](#)
[E305RI](#) [LDQ-M513RI](#) [LDQ-M5204RI-SI](#) [LDQ-N3402RI](#) [LDQ-N3606RI](#) [LDS-A3924RI-SI](#)