

Ordering Information:


C5080HI -04P-XX

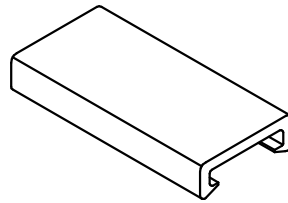
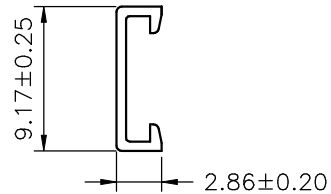
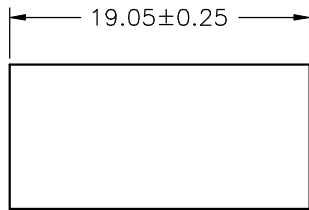
1 2 3

1. Series No.
2. No. of Circuits
3. AWG Of Wire
 - 16 - AWG#16
 - 18 - AWG#18
 - 20 - AWG#20
 - 22 - AWG#22

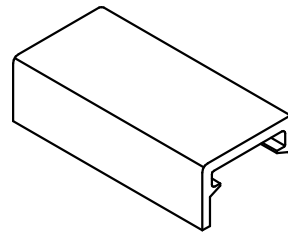
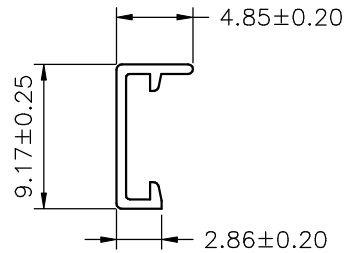
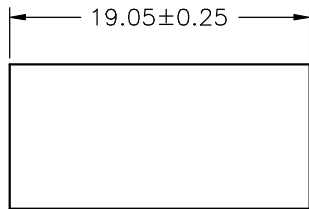
SPECIFICATIONS

Current Rating: 10A AC,DC
 Voltage Rating: 250V AC,DC
 Temperature Range: -25°C ~ +85°C
 Contact Resistance: 10mΩ Max
 Insulation Resistance: 1000MΩ Min
 Withstanding Voltage: 1500V AC/minute
 Terminal: Phosphor Bronze/Tin-plated
 Material: Nylon 66,UL94V-2
 Color: Natural(Translucent)

				JOINT TECH ELECTRONIC IND. CO., LTD. JOY DAY INDUSTRIAL CO., LTD.	
		UNIT	SCALE	SHEET	TITLE:
		mm		1 of 1	
		DRAWN BY	APPROVED BY		5.08mm PITCH I. D. C. HOUSING
		歐陽小強	董正一		
		2007.04.25	2007.04.25		
		GENERAL TOLERANCE			
		X. X±0.25	ANGLE±		DRAW NO. : C5080HI -04P-XX
A0	NEW RELEASE	2007.04.25	X. XX±0.15		
REV.	DESCRIPTION	DATE	X. XXX±0.05		REV. A0



C5080HI-C(Through type)



C5080HI-CA(End type)

SPECIFICATIONS

Current Rating: 10A AC,DC
 Voltage Rating: 250V AC,DC
 Temperature Range: -25°C ~ +85°C
 Contact Resistance: 10mΩ Max
 Insulation Resistance: 1000MΩ Min
 Withstanding Voltage: 1500V AC/minute
 Material: Nylon 66,UL94V-2
 Color: Natural(Translucent)



JOINT TECH ELECTRONIC IND. CO., LTD.
 JOY DAY INDUSTRIAL CO., LTD.

			UNIT	SCALE	SHEET	TITLE:
			mm		1 of 1	
			DRAWN BY	APPROVED BY		5.08mm PITCH COVER OF I. D. C. HOUSING
			董正一 2001.02.01	董正一 2001.02.01		
			GENERAL TOLERANCE			DRAW NO. : C5080HI-C(A)
			X. X±0.25	ANGLE±	REV. B0	
B0	NEW RELEASE	2005.12.12	X. XX±0.15	▽		
REV.	DESCRIPTION	DATE	X. XXX±0.05	⊕		

X-ON Electronics

Largest Supplier of Electrical and Electronic Components

Click to view similar products for [DC Power Connectors](#) category:

Click to view products by [Joint manufacturer](#):

Other Similar products are found below :

[1600206-1](#) [163-0301-EX](#) [163-0302](#) [163-0308-EX](#) [163-0310-EX](#) [163-1061-EX](#) [163-1100-EX](#) [163-4024](#) [163-4117-EX](#) [163-4118-EX](#) [163-5005-E](#) [163-7421](#) [163-MJ22-EX](#) [171-0721-EX](#) [171-0725-EX](#) [171-3118-EX](#) [171-3210-E](#) [171-3221-EX](#) [171-3222-EX](#) [171-A1326-EX](#) [173-23507-ST-EX](#) [173-5521TIP-EX](#) [173-6330TIP-EX](#) [KLDVX-SMT-02-ATR](#) [KLDX-0201-AHT-1](#) [KLDX-0202-AHT](#) [KLDX-SMT-0202-BP](#) [KLDX-SMT-0202-BPTR](#) [163-0179-EX](#) [163-0307-E](#) [163-0309-EX](#) [163-4007-EX](#) [163-4015-EX](#) [163-4025](#) [163-4119-E](#) [163-4303-E](#) [16PJ101-EX](#) [171-0702-EX](#) [171-0722-E](#) [171-0726-EX](#) [171-2122-EX](#) [171-3216-EX](#) [171-3218-EX](#) [171-3219-EX](#) [171-3220-EX](#) [171-7391](#) [173-3413-ST-EX](#) [173-4017-ST-EX](#) [RAPCBRK](#) [K596](#)