

## M23 Field Attachable Connectors

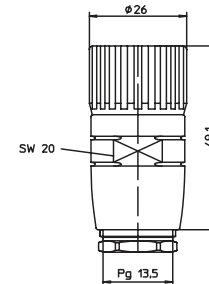
RKC.../13.5 | RKCW...13.5



### Female, 12- and 19-Pole

Field attachable connector, M23 male connector 12- and 19-pole with threaded joint, external thread, assembling with solder connections.

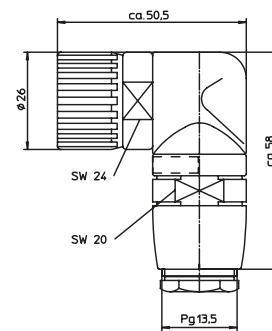
RKC.../13.5



### Female, 12- and 19-Pole

Field attachable connector, M23 male connector 12- and 19-pole, right angle with threaded joint, external thread, assembling with solder connections.

RKCW...13.5



## Pin Assignments

M23 - Male

12 poles



19 poles





# Be Certain with Belden

## M23 Field Attachable Connectors

RKC.../13.5 | RKCW...13.5

### Technical Data

#### Environmental





Degree of protection IP 67  
 Operating temperature range -40°C (-40°F) / +125°C (+257°F)

#### Mechanical

Housing / Molded body CuZn, nickel-plated  
 Insert PBT GF  
 Contact CuZn, pre-nickel and 0.8 microns gold-plated  
 Receptacle shell CuZn, nickel-plated  
 O-ring FKM  
 Mode of connection solder connection  
 Connectable conductor max. 1.0 mm<sup>2</sup>

#### Electrical

Contact resistance ≤ 5 mΩ  
 Nominal current at 40°C 12 poles 7.5 A  
 19 poles 7.5 A pin Ø 1 mm, 10 A pin Ø 1.5 mm  
 Nominal voltage 12 poles 240 V  
 19 poles 120 V  
 Rated voltage 12 poles 250 V  
 19 poles 125 V  
 Test voltage 12 poles 2.5 kV eff./ 60 s  
 19 poles 1.5 kV eff./ 60 s  
 Insulation resistance > 10<sup>9</sup> Ω  
 Pollution degree 3

Part Number		Pins	Cable Diameter Range	Characteristics
<b>Female</b>	<b>Female 90°</b>			
RKC 120/13.5	RKCW 120/13.5	12	Ø 10.0 - 14.0 mm	 
RKC 190/13.5	RKCW 190/13.5	19	Ø 10.0 - 14.0 mm	 

## X-ON Electronics

Largest Supplier of Electrical and Electronic Components

*Click to view similar products for [Circular MIL Spec Connector](#) category:*

*Click to view products by [Lumberg](#) manufacturer:*

Other Similar products are found below :

[89075GULPR](#) [0025-262-542](#) [0025-264-3014](#) [58-570121-04S](#) [0134-213-1208](#) [0134-213-2209](#) [0025-258-000](#) [60-042022-07P](#) [60-042022-19P](#)  
[60-042022-23P](#) [60-042217-10P](#) [0114-201-1278](#) [012-0467-000](#) [602GB06EG24-61SN](#) [0134-201-1207](#) [0134-213-1006](#) [6104-207-2302](#) [6104-](#)  
[208-1902](#) [61-168211-04P](#) [61-168617-10P](#) [6131-202-19149P](#) [6131-204-21149P](#) [6131-208-13149P](#) [6131-209-17149P](#) [6131-210-11149P](#) [6131-](#)  
[211-19149P](#) [6131-216-19149P](#) [6131-259-21149P](#) [6131-259-23149P](#) [6131-265-17149P](#) [6131-265-19149P](#) [CS3100A18-1P-472](#) [CS3100A-36-](#)  
[77P](#) [CS3101A-16-55P](#) [CS3102A-10SL-55P](#) [CS3102A-14S-58P](#) [CS3102A-32-17P](#) [CS3102A32-25S](#) [CS3102C18-4P-472](#)  
[CS3106A10SL3S004](#) [CS3106A-18-73S](#) [CS3108A-14S-52S](#) [CS3108A-28-51S](#) [6162-233-1277](#) [6162-324-1231](#) [M243082296Z](#)  
[M2884010AC1S1](#) [CT0-24-10SC](#) [CT0M20-7PCAU](#) [M28840/17AC1G3](#)