

Product Facts

- Designed to international standard CEE-22
- Recognized under the Component Recognition Program of Underwriters Laboratories Inc., File No. E28476
- Certified by Canadian Standards Association, File No. LK7189
- VDE approved, License No. 70442 and 70443
- Mate with standard international plugs
- Machine applied, crimp, snap-in contacts
- Same contact design for ground and power — one inventory item
- Rear of housing is egg-crated for maximum protection — no post termination sleeving required

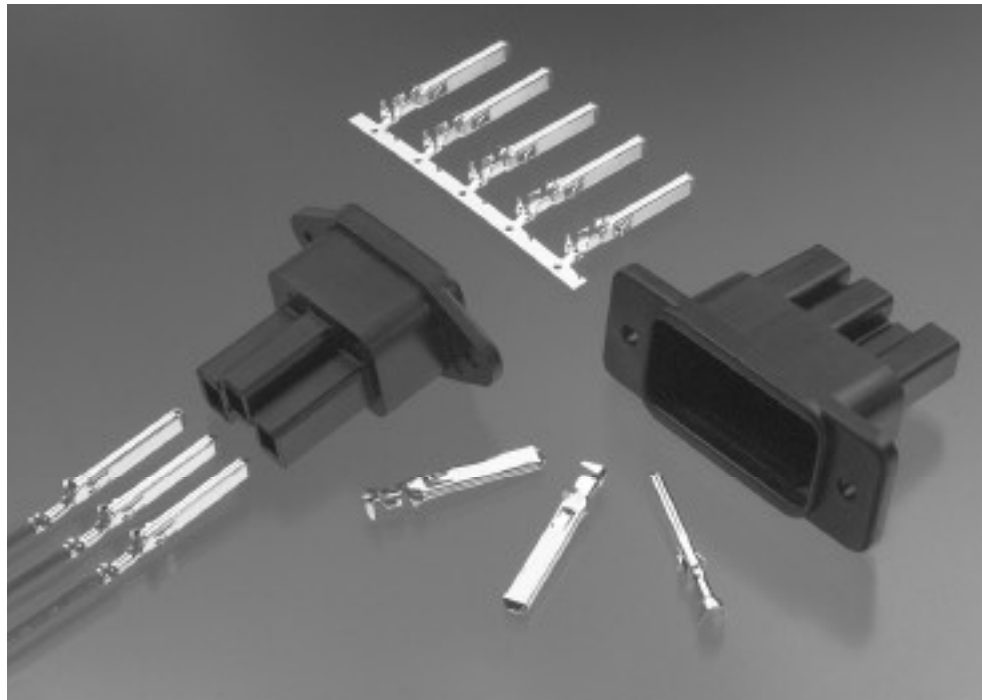


Photo 42670

Technical Document

- Instruction Sheets
- 408-7711
 - 408-7686 - Power Cord Receptacle Housing PN 206637-1
 - Extraction Tool PN 91106-1

Application Specification

- 114-10044 - Power Cord Receptacle Housing PN 206637-1

AMP Power Cord Receptacles are designed to electrical specification CEE-22, the international standard used by most European nations.

AMP Power Cord receptacles are available in a 3-position and a 5-position male configuration with a polarized, thermoplastic housing suitable for rack or panel mounting. The crimp, snap-in contacts are tin plated and have a rectangular cross section. The ground contact extends .118 [3] farther forward than the power contacts when

installed in the housing, to provide for proper grounding prior to power engagement.

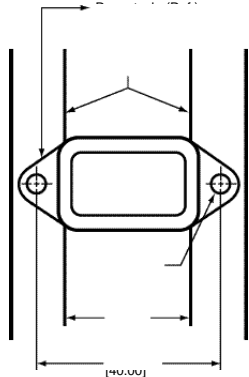
They are recognized by Underwriters Laboratories Inc., under the Component Recognition Program, at 250 volts, 15 amperes when wired with appropriate 16 AWG [1.25-1.4mm²] wire per table 400-5 of the national electrical code. CSA certifies the receptacles for 250 volts, 15 amps. Because of configuration controls, CEE rates them for 250 volts, 10 amperes. VDE certifies

them for 250 volts, 10 amperes.

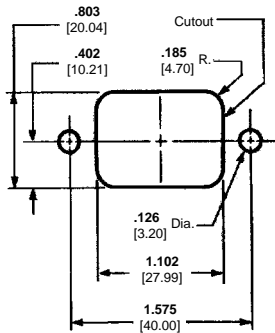
Contacts are available in strip form for high-speed, automatic machine application at lowest cost, and loose-piece contacts are available for hand tool application for repair or maintenance.

In addition to economies of application by automatic machine, the egg crate design at the rear of the housing cavities eliminates the need for costly post-termination insulation sleeving.

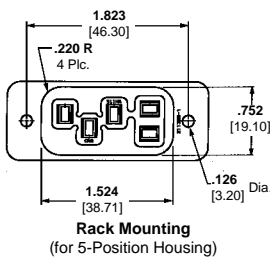
Materials and Finish
Housing – Thermoplastic,
 94V-0 rated; 90° C temperature
 rating; black
Contact – Brass
Contact Finish – Tin



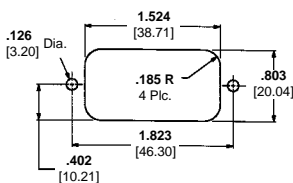
Rack Mounting
(for 3-Position Housing)



Panel Mounting
(for 3-Position Housing)

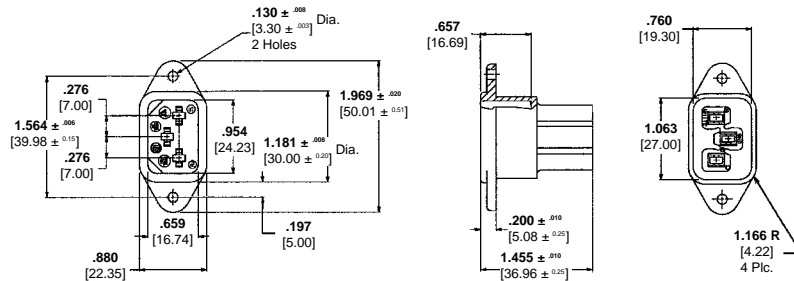


Rack Mounting
(for 5-Position Housing)

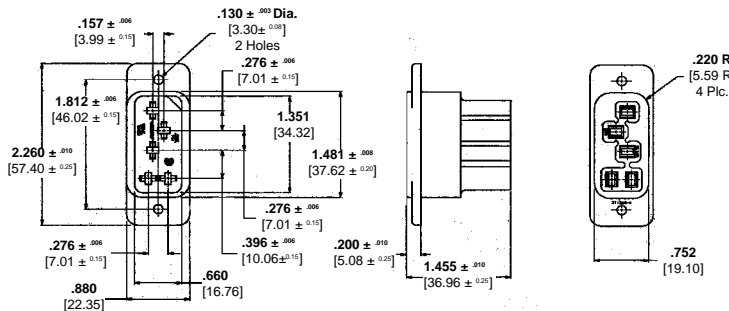


Panel Mounting
(for 5-Position Housing)

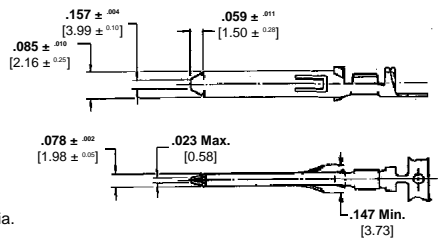
3-Position Housing
Part Number 206637-1



5-Position Housing
Part Number 211395-1



Pin Contacts



Wire Insulation Range .080/.135 Dia.
[2.03 - 3.43]

Wire Size Range AWG	Wire Size Range mm ²	Ins. Dia. Range	Pin Contact Part Number		Applicator Part Number
			Strip Form	Loose Piece	
20-16	0.5-1.4	.080-.135 2.08-3.43	206638-2	206638-3	466136-2
18-14	0.8-2.0	.080-.135	208914-2	—	567188-2

Extraction Tool Part Number 91106-1

AMP-O-LECTRIC

Terminating Machine

A complete line of application tooling is available to meet a wide range of production needs — from precision hand tools and bench-mounted semiautomatic machines to fully automatic lead making machines. Consult AMP (for 3-Position Housing) for the exact machines for specific applications.



Photo 81169

X-ON Electronics

Largest Supplier of Electrical and Electronic Components

Click to view similar products for te connectivity manufacturer:

Other Similar products are found below :

[570416-000](#) [CLTEQ-M81CE-SSRELAY-4-20V](#) [4-1633138-8](#) [D38999/24FJ4AN](#) [4-1195131-0](#) [650069-000](#) [SMD100-2](#) [2EDL4CM](#)
[DTS20W19-11PD-3028](#) [DTS20W19-11PD-3028-LC](#) [DTS20W19-32SD-3028-LC](#) [DTS20W19-32SD-3028](#) [NC6-P104-06](#) [TXR64AB90-](#)
[3616AI](#) [DTS26F21-41HE](#) [DTS26F21-41AE](#) [DTS26F21-41PE-LC](#) [DTS26F21-11SE-3028-LC](#) [D38999/24WF32JE](#) [D38999/24WF32SE-LC](#)
[DTS24W19-32HE](#) [D38999/20JB35HA](#) [D38999/24WJ20PA](#) [164-8033-08](#) [D38999/24FF32JE](#) [D38999/24FF32SE-LC](#) [D38999/24WF32JB](#)
[D38999/24WG11HA](#) [D38999/24WG11HN](#) [MS27467T21F11H](#) [DJT16E21-11HA](#) [DTS24F19-32HE](#) [DTS20W19-32SA-3028-LC](#) [DTS24F19-](#)
[11SC-3028-LC](#) [DTS24F19-11SC-3028](#) [DJT14E13-98HB](#) [D38999/20WC8BB](#) [1-330599-5](#) [DTS24F21-41HN-LC](#) [DTS24F21-41HN](#)
[DTS24F21-41AN](#) [DTS24F21-39HN](#) [DTS24F21-41PN-LC](#) [AFD50-10-6SN-1A-LC](#) [DJT10F17-26HC](#) [DTS24W19-32HB](#) [ACT20JE99HA](#)
[DJT10E17-26HC](#) [DJT10E17-26HN](#) [DJT10F17-26HA](#)