

| | |
|-----------|---------------------------|
| Model No. | OST05WG01GD- XXXXT5C1B |
| REV. | C1 |

T5 Concave AUTO LED

Descriptions:

- Green light source, fast response
- Long life, easy installation
- Voltages available 12VDC
- LED model number: XXXXT5C1B

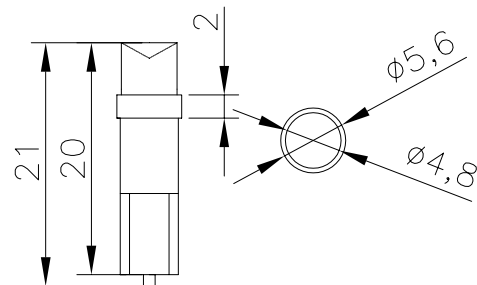
Features:

- Available in red, yellow, green, blue, white
- High temperature and environmental protection PA material for lamp holder
- Low power consumption
- Energy saving
- Eye protection, no stroboflash, no radiation
- Long life

Application:

- Dashboard Light
- Width-indicator Lamp
- Signal Light

Product Picture and Dimensions:



Unit : mm



| | |
|-----------|-----------------------|
| Model No. | OST05WG01GD-XXXXT5C1B |
| REV. | C1 |

Device Selection Guide

| Module No. | Color | Wavelength (Typ.) | Intensity / Per LED (Typ.) | Overall luminous flux(20mA) |
|------------|--------|-------------------|----------------------------|-----------------------------|
| R5RUT5C1B | Red | 625 nm | 140mcd | 1.0lm |
| G5DUT5C1B | Green | 525 nm | 450mcd | 3.5lm |
| B5YUT5C1B | Blue | 470 nm | 130mcd | 0.6lm |
| Y5RUT5C1B | Yellow | 590 nm | 140mcd | 1.0lm |
| W5YKT5C1B | White | X=0.27,Y=0.28 | 270mcd | 3.0lm |

Absolute Maximum Ratings(Ta=25)

| Items | Symbol | Values | Units |
|----------------------------|------------------|-----------|-------|
| Operating Supply Range(DC) | V _{idc} | 16 | V |
| Input Current (DC) | I _i | 30 | mA |
| Power Dissipation | P _a | 0.48 | W |
| Operating Temperature | T _{ope} | -10 ~ +40 | DegC |
| Storage Temperature | T _{stg} | -20 ~ +80 | DegC |

Typical Performance (Ta=25)

| Items | Symbol | Min. | Typ. | Max. | Units |
|-----------------------|-------------------|------|------|------|-------|
| LED Module Power | P _m | - | 0.24 | 0.48 | w |
| Input Voltage(DC) | V _i | - | 12 | 16 | V |
| Product Input Current | I _f | - | 20 | 30 | mA |
| Beam Pattern | BP | - | 120 | - | Deg |
| Total Diameter of PCB | L _{mod.} | - | 21 | - | mm |
| Net Weight | Wei. | --- | 0.36 | --- | g |

X-ON Electronics

Largest Supplier of Electrical and Electronic Components

Click to view similar products for [LED Panel Mount Indicators](#) category:

Click to view products by [Optosupply](#) manufacturer:

Other Similar products are found below :

[607-1312-310F](#) [607-3232-140F](#) [6091M1-24V](#) [6091M5-24V](#) [6091M7-24V](#) [821-0331-503](#) [FL2870C8R](#) [FL2950WL7B](#) [FL589WL8R](#)
[Q6P3BXXB12E](#) [H8630FBBA3](#) [MPC5ADW6.0](#) [DX1091GN](#) [NL177WL3G](#) [NL276C3G](#) [NL2950BWL3G](#) [NL2950CWL2R](#) [NL589WL2R](#)
[NL67C3G](#) [NL67C3R](#) [2191L1-12V](#) [PB22SIOL0RG](#) [PB22SPPM41R](#) [PB22SPPM61R](#) [LE177C5B](#) [LH1048BSWL3702](#) [LH1048BWL3702](#)
[LH382A](#) [LHM62B](#) [SSI-LXH387USBD-150](#) [SSI-LXH9ZIC40587](#) [SSP-LXS110818BA](#) [FL2950BWL7R](#) [FL2950WL7R](#) [FL2951WL8G](#)
[FL2951WL8R](#) [FL589C7R](#) [FL67C7R](#) [FL67WL8G](#) [2191QU7-24V](#) [2191U1-12V](#) [2191U5-12V](#) [2191U5-6V](#) [2191U7-12V](#) [249-4167-3734-504F](#) [Q6P5BXXG02E](#) [3990A7](#) [5110F3-12V](#) [MPC5BCW18.0](#) [556-1237-801F](#)