

Model No.	OST089S01GD- XXXXT8E1A
REV.	C1

T08 Flat AUTO LED Based on BA9S

Descriptions:

- Green light source, fast response
- Long life, easy installation
- Voltages available 12VDC
- LED model number: XXXXT8E1A

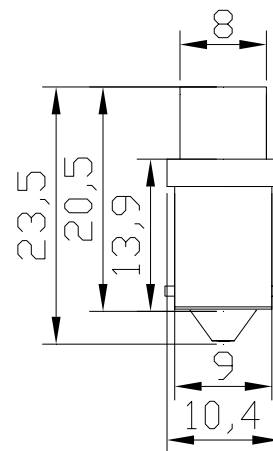
Features:

- Available in red, green, blue, white and more
- The socket material is use the copper, the appearance is through oxidizing
- Low power consumption
- Energy saving
- Eye protection, no radiation
- Long life

Application:

- Back up light
- Signal Light

Product Picture and Dimensions:



Unit:mm



Model No.	OST089S01GD- XXXXT8E1A
REV.	C1

Device Selection Guide

Module No.	Color	Wavelength (Typ.)	Intensity / Per LED (Typ.)	Overall luminous flux
R5RUT8E1A	Red	625 nm	420mcd	1.0lm
G5DUT8E1A	Green	525 nm	3100mcd	3.5lm
B5YUT8E1A	Blue	470 nm	770mcd	0.6lm
W5YKT8E1A	White	X=0.27,Y=0.28	1500mcd	3.0lm

Absolute Maximum Ratings(Ta=25)

Items	Symbol	Values	Units
Operating supply range(DC)	V _{dc}	16	V
Input Current (DC)	I _i	30	mA
Power Dissipation	P _a	0.48	W
Operating Temperature	T _{ope}	-20 ~ +50	DegC
Storage Temperature	T _{stg}	-20 ~ +80	DegC

Typical Performance (Ta=25)

Items	Symbol	Min.	Typ.	Max.	Units
LED Module Power	P _m	-	0.24	0.48	W
Input Voltage(DC)	V _i	-	12	16	V
Product input Current	I _f	-	20	30	mA
Beam Pattern	BP	-	140	-	Deg
Total diameter of PCB	L _{mod.}	-	23.5	-	mm
Net Weight	Wei.	---	1.6	---	g

X-ON Electronics

Largest Supplier of Electrical and Electronic Components

Click to view similar products for [LED Panel Mount Indicators](#) category:

Click to view products by [Optosupply](#) manufacturer:

Other Similar products are found below :

[607-1312-310F](#) [607-3232-140F](#) [6091M1-24V](#) [6091M5-24V](#) [6091M7-24V](#) [821-0331-503](#) [FL2870C8R](#) [FL2950WL7B](#) [FL589WL8R](#)
[Q6P3BXXB12E](#) [H8630FBBA3](#) [MPC5ADW6.0](#) [DX1091GN](#) [NL177WL3G](#) [NL276C3G](#) [NL2950BWL3G](#) [NL2950CWL2R](#) [NL589WL2R](#)
[NL67C3G](#) [NL67C3R](#) [2191L1-12V](#) [PB22SIOL0RG](#) [PB22SPPM41R](#) [PB22SPPM61R](#) [LE177C5B](#) [LH1048BSWL3702](#) [LH1048BWL3702](#)
[LH382A](#) [LHM62B](#) [SSI-LXH387USBD-150](#) [SSI-LXH9ZIC40587](#) [SSP-LXS110818BA](#) [FL2950BWL7R](#) [FL2950WL7R](#) [FL2951WL8G](#)
[FL2951WL8R](#) [FL589C7R](#) [FL67C7R](#) [FL67WL8G](#) [2191QU7-24V](#) [2191U1-12V](#) [2191U5-12V](#) [2191U5-6V](#) [2191U7-12V](#) [249-4167-3734-504F](#) [Q6P5BXXG02E](#) [3990A7](#) [5110F3-12V](#) [MPC5BCW18.0](#) [556-1237-801F](#)