

PANDUIT PART NUMBER	STUD SIZE	DIMENSIONS in.				
		A ±.02	W ±.01	C (MIN)	M ±.02	H ±.01
P14-6F	#6	.63 (16.00)	.28 (7.11)	.20 (5.08)	.49 (12.45)	.15 (3.81)
P14-6FN	#6	.63 (16.00)	.24 (6.10)	.20 (5.08)	.49 (12.45)	.15 (3.81)
P14-8F	#8	.69 (17.53)	.31 (7.87)	.23 (5.84)	.53 (13.46)	.17 (4.32)
P14-10F	#10	.71 (18.03)	.34 (8.64)	.25 (6.35)	.55 (13.97)	.20 (5.08)
P14-10FN	#10	.71 (18.03)	.31 (7.87)	.25 (6.35)	.55 (13.97)	.20 (5.08)
P14-14F	1/4"	.88 (22.35)	.44 (11.18)	.33 (8.38)	.63 (16.00)	.27 (6.86)

NOTES:

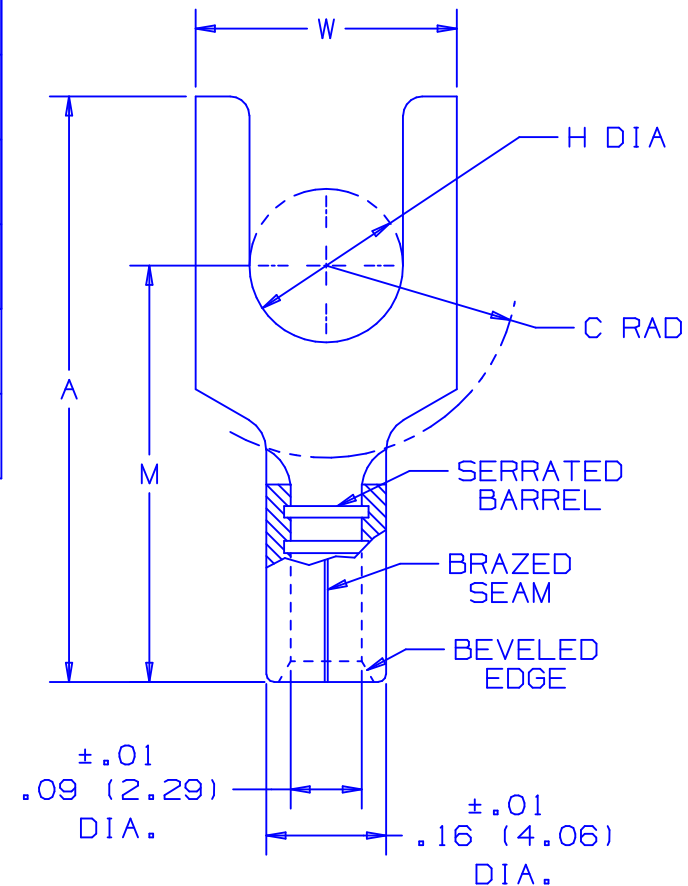
- UL LISTED AND CSA CERTIFIED FOR:
A. 18-14 AWG SOLID OR STRANDED COPPER WIRE
- MAXIMUM RECOMMENDED OPERATING TEMP. NOT TO EXCEED 150° (302° F)
- MATERIAL:
A. STAMPING - .03" (.76) THK COPPER, TIN PLATED
- PACKAGE QTY: STD. PKG. -C=100
BULK PKG. -M=1000
- DIMENSIONS IN BRACKETS ARE IN MILLIMETERS
- INSTALLATION TOOLS:
A. UL LISTED AND CSA CERTIFIED: CT-100, CT-200, CT-570, CT-1570
B. PANDUIT APPROVED: CT-160, CT-260
- WIRE STRIP LENGTH: 9/32 ^{+1/32}₀ (7.1 ⁺⁸₀)



LISTED
587H
E52164



CERTIFIED
LR31212



A41255_08

08	12/03	KLFU		REMOVED NOTE 1B, ADDED NOTE 2			
07	1/01	KMD	SKB	CAD FILE SPEC. WAS N41255AA_PCD_06	8938	JAC	CCH
06	5/99	JKD	--	ADDED CT-1570 TOOL	07632	--	--
05	6/96	JB	RLS	ADDED PART NO. P14-6FN & P14-10FN TO TABLE "C" DIM. CHANGED FROM ±.015 TO MIN	04731	LA	DBH
REV	DATE	BY	CHK	DESCRIPTION	ECN #	APP	PM

PANDUIT CORP.

TINLEY PARK, ILLINOIS

#16-14 BARREL NON-INSULATED FORK

DRAWN BY MS CHK'D SCALE N/A DRAWING NO. A41255

X-ON Electronics

Largest Supplier of Electrical and Electronic Components

Click to view similar products for [Terminals](#) category:

Click to view products by [Panduit](#) manufacturer:

Other Similar products are found below :

[HT-13-10](#) [71M-250-32-NB](#) [01-2065-1-0216](#) [00581P0075](#) [M10-10RX](#) [M10BCK](#) [60205-1](#) [604200-1](#) [60598-1-CUT-TAPE](#) [60617-1-C](#) [60873-1](#) [M14-516R/SK](#) [M14-6RSX](#) [M18-10FLX](#) [M18-8FBX](#) [M18-8R/LX](#) [M18BCK](#) [61314-6-C](#) [61-S](#) [61-SN-A](#) [62-NBM-A](#) [63-S](#) [640179-1](#) [640917-2-CUT-TAPE](#) [6501550002](#) [66107-2-C](#) [696683-1](#) [696834-1](#) [696861-1](#) [696931-1](#) [696999-1](#) [M8-516RK](#) [M86700006](#) [MA250DMFMX-A](#) [701-2007](#) [701-2307](#) [701-7761-03](#) [70F-110-32-PB](#) [718-N-A](#) [71M-187-20-NBL](#) [71M-250-32-NBL](#) [72F-187-20-NBL](#) [72M-250-32-NBL](#) [7310](#) [73F-250-32](#) [73F-250-32-NBL](#) [73F-250-32-NL](#) [F14-10C](#) [F-1M](#) [751-250](#)