

BULLETS & RECEPTACLES (PC·PCE TYPE)

SPECIFICATION

MATERIAL : Terminal : Brass (Electro-tin-plated)
 Sleeve : Oxygen free copper tube
 (electro-tin-plated)
 Insulator : Nylon
 RATED VOLTAGE : 300V

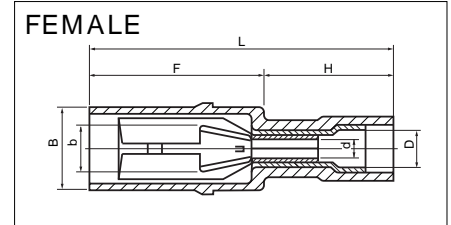
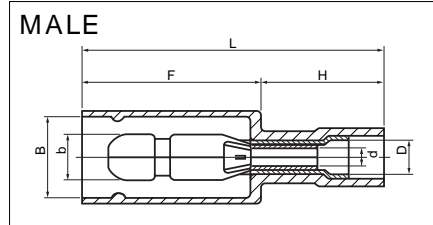
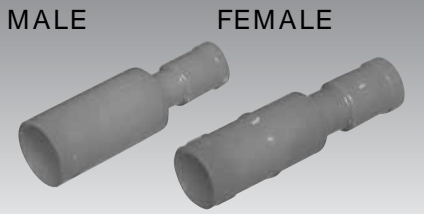
RATED CURRENT : See following table

Wire mm ²	0.5	0.75	1.25	2
A	10	12	15	20

TEMPERATURE RANGE : - 40 ~ + 105

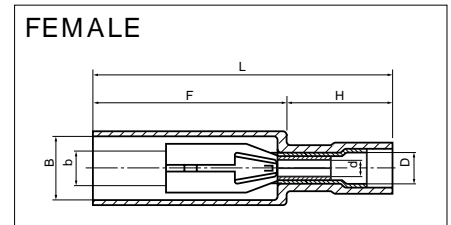
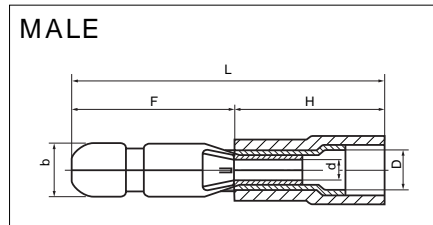
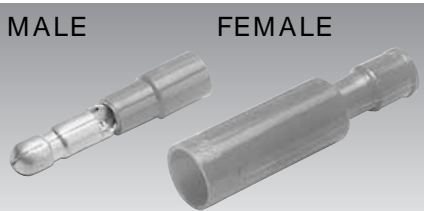
FLAME RETARDANCE : UL94V2

PC TYPE



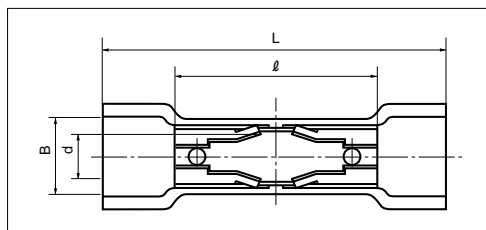
PART NUMBER	DIMENSIONS mm							WIRE RANGE		TOOL No.		INS	STD QTY/BOX
	b	B	d	D	L	F	H	STRANDED mm ²	AWG	HAND TOOL No.	TOOL BODY No. DIES No.		
PC 2005-M	2.0	5.1	1.7	3.1	26.5	15.0	11.5	0.5 ↓ 0.75	20-18	NH 5 NH 32 NH 60	NA 3 N3 5	Nylon	1,000 (100×10)
PC 2005-F	2.1	4.6			24.5	13.0							
PC 4009-M	4.0	7.4	1.8	3.2	27.7	16.5	11.2	0.75 ↓ 1.25	18-16	NH 11 NH 32	NA 3 N3 11	Nylon	1,000 (100×10)
PC 4009-F	3.95	6.9			26.2	15.0							
PC 4020-M	4.0	7.4	2.4	3.9	27.7	16.5	11.2	2.0	14	NH 12 NH 32	NA 3 N3 12	Nylon	1,000 (100×10)
PC 4020-F	3.95	6.9			26.2	15.0							

PCE TYPE



PART NUMBER	DIMENSIONS mm							WIRE RANGE		TOOL No.		INS	STD QTY/BOX
	b	B	d	D	L	F	H	STRANDED mm ²	AWG	HAND TOOL No.	TOOL BODY No. DIES No.		
PCE 4009-M	4.0	—	1.8	3.2	25.2	13.0	12.2	0.75 ↓ 1.25	18-16	NH 11 NH 32	NA 3 N3 11	Nylon	1,000 (100×10)
PCE 4009-F	3.95	6.5			31.5	20.3	11.2						
PCE 4020-M	4.0	—	2.4	3.9	25.2	13.0	12.2	2.0	14	NH 12 NH 32	NA 3 N3 12	Nylon	500 (100×5)
PCE 4020-F	3.95	6.5			31.5	20.3	11.2						
PCE 5020-M	5.0	—	2.4	3.9	25.2	13.0	12.2	2.0	14	NH 12 NH 32	NA 3 N3 12	Nylon	500 (100×5)
PCE 5020-F	4.95	7.4			31.5	20.3	11.2						

2-WAY RECEPTACLE



BC-4F is intermediate type of connector.
 Mating Male : PCE-4009M or PCE-4020M

PART NUMBER	DIMENSIONS mm				STD QTY/BOX
	B	d	L	l	
BC 4F	7.5	3.95	32.0	19.0	200

X-ON Electronics

Largest Supplier of Electrical and Electronic Components

Click to view similar products for [Terminals](#) category:

Click to view products by [Nichifu](#) manufacturer:

Other Similar products are found below :

[HT-13-10](#) [71M-250-32-NB](#) [01-2065-1-0216](#) [00581P0075](#) [M10-10RX](#) [M10BCK](#) [60205-1](#) [604200-1](#) [60598-1-CUT-TAPE](#) [60617-1-C](#) [60873-1](#) [M14-516R/SK](#) [M14-6RSX](#) [M18-10FLX](#) [M18-8FBX](#) [M18-8R/LX](#) [M18BCK](#) [61314-6-C](#) [61-S](#) [61-SN-A](#) [62-NBM-A](#) [63-S](#) [640179-1](#) [640917-2-CUT-TAPE](#) [6501550002](#) [66107-2-C](#) [66107-4-C](#) [696683-1](#) [696834-1](#) [696861-1](#) [696931-1](#) [696999-1](#) [M8-516RK](#) [M86700006](#) [MA250DMFMX-A](#) [701-2007](#) [701-2307](#) [701-7761-03](#) [70F-110-32-PB](#) [718-N-A](#) [71M-187-20-NBL](#) [71M-250-32-NBL](#) [72F-187-20-NBL](#) [72M-250-32-NBL](#) [7310](#) [73F-250-32](#) [73F-250-32-NBL](#) [73F-250-32-NL](#) [F14-10C](#) [F-1M](#)