

## Automotive

**Datasheet Plastic Collimator Lens CAX100<sup>1</sup>**

These data concern a full plastic a-spherical lens. It is for use as a collimator in combination with a diode laser. It can be mounted by use of glue or spring-loaded. Mechanical lock-mounting is not advisable because of possible distortions.

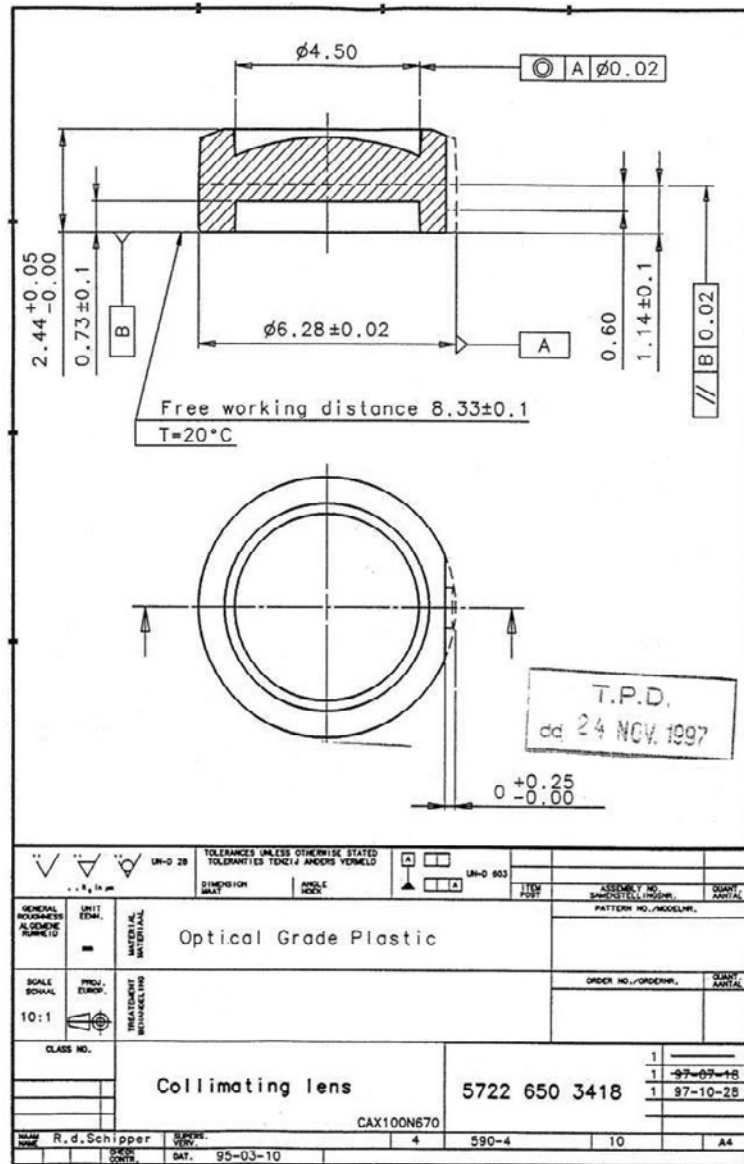
Parameters					Unit
<b>Design conditions (670 nm)</b>					
N.A.	0.2				--
Clear Aperture (Exit Pupil)	4.1				mm
Clear Aperture (Entrance Pupil)	3.9				mm
<b>Optical parameters</b>					
	<b>Wavelength</b>				nm
	<b>546</b>	<b>632</b>	<b>670</b>	<b>780</b>	
Effective Focal Length <sup>1)</sup>	9.78	9.93	9.97	10.07	mm
Back Focal Length <sup>1)</sup>	8.98	9.12	9.17	9.26	mm
Free Working Distance <sup>1)</sup>	8.25	8.39	8.44	8.53	mm
RMS mean <sup>1)</sup>	28	33	35	41	mλ
	on axis				
RMS max. (±3σ) <sup>1)</sup>	65	75	80	93	mλ
	on axis				
Field Radius	0.2				mm
1) Remark: without 4 mm SF11 glass or 1.25 mm BK7 glass					
1) Optical Tolerance	+/- 0.10				mm
<b>Mechanical parameters</b>					
Mounting hole diameter $D_{mh}$	∅ 6.28 (+/- 0.02)				mm
Lens Thickness	1.25				mm
Optical Eccentricity	< 30				μm
<b>Environmental stability</b>					
Storage Temperature	0 to 65				°C
Operating Temperature	0 to 65				°C
<b>General Data:</b>					
Transmission [%]:	> 90 (non coated)				
Lens Material:	POLYCARB				

<sup>1</sup> Specifications subject to change without notice. Values for Entrance Pupil side see figure

© Helvoet Rubber & Plastic Technologies NV. All rights reserved. Reproduction prohibited without written permission from the copyright owner

Automotive

© Helvoet Rubber & Plastic Technologies NV. All rights reserved. Reproduction prohibited without written permission from the copyright owner



## X-ON Electronics

Largest Supplier of Electrical and Electronic Components

*Click to view similar products for [LED Lighting Lenses](#) category:*

*Click to view products by [Laser Components](#) manufacturer:*

Other Similar products are found below :

[LL01ED-AK40L06](#) [LL01ZZ-EX25L06-M2](#) [180182-0000](#) [FNP-N2-N083-0R NRW](#) [LL01ED-ALI55R49](#) [0190535300](#) [0410111300](#)  
[0510113303](#) [0530997](#) [2710121](#) [C11004\\_TINA2-RS](#) [C12231\\_LENA-FRESNEL-LENS](#) [LL01ED-AKY24R49](#) [LL01CR-AYG15R49](#)  
[LL01CR-OT32L06-M2](#) [LL01ZZ-AAA24L49](#) [LL01CR-CEN38L02](#) [LL01ZZ-AAA55L49](#) [LL01CR-AYG24R49](#) [LL01A00CZMB2-M2](#)  
[LL01ED-AKY38R49](#) [LL01CR-CNE2545L06-M2](#) [LL01ZZ-AAA38L49](#) [LL01ED-AKV36R49](#) [LL01ED-ALI24R49](#) [LL01CR-AYG38R49](#)  
[FN15973\\_RONDA-REC-60-C](#) [F16859\\_LINDA-ZT25](#) [C14169\\_LENA-CLEAR-LENS](#) [C16125\\_OLGA-W](#) [C17410\\_SPORT-2X2-FT6](#)  
[C17414\\_SPORT-2X2-S6](#) [C17409\\_SPORT-2X2-FT6W](#) [C17360\\_SPORT-2X2-FT60](#) [C17434\\_ILONA-WW](#) [F16636\\_LINDA-W60](#) [10003](#)  
[10003/15](#) [10048](#) [10049](#) [10108](#) [CP10960\\_RGBX-SS](#) [CP12395\\_LXP3-W](#) [10415](#) [10510](#) [1-1000288-0](#) [F14487\\_FLORENCE-1R-MAXI-WG](#)  
[12667](#) [C14165\\_STRADA-2X2-ME-WIDE2](#) [C14605\\_HB-2X2-RW](#)