

Automotive

Datasheet Plastic Collimator Lens CAY033/040 N670

These data concern a full plastic bi-aspherical lens. It is specified for use as a collimator in combination with a diode laser. It can be mounted by use of glue or spring-loaded. Mechanical lock-mounting is not advisable because of possible distortions.

Parameters	Wavelength 670 nm	Unit
Design conditions		
<i>N.A.</i>	0.38	--
Clear Aperture <i>CA</i>	2.5	mm
Designed with laser cover glass (<i>BK7</i>) on source side:		
Distance from source	0.55	mm
Glass thickness	0.25	mm
Optical parameters		
Focal Length	3.35	mm
Back Focal Length <i>BFL</i>	2.07	mm
Free Working Distance <i>FWD</i>	1.97	mm
<i>RMS</i> mean	on axis	30
	total	mλ
<i>RMS</i> max. ($\pm 3\sigma$)	on axis	40
	total	65
Optical Tolerance	0.1	mm
Field Radius	0.05	mm
Mechanical parameters		
Mounting hole diameter D_{mh}	$\varnothing 4.0 (+0.03)$	mm
Other parameters: see drawing		
Environmental stability		
Storage Temperature	-25 to 70	°C
Operating Temperature	5 to 65	°C

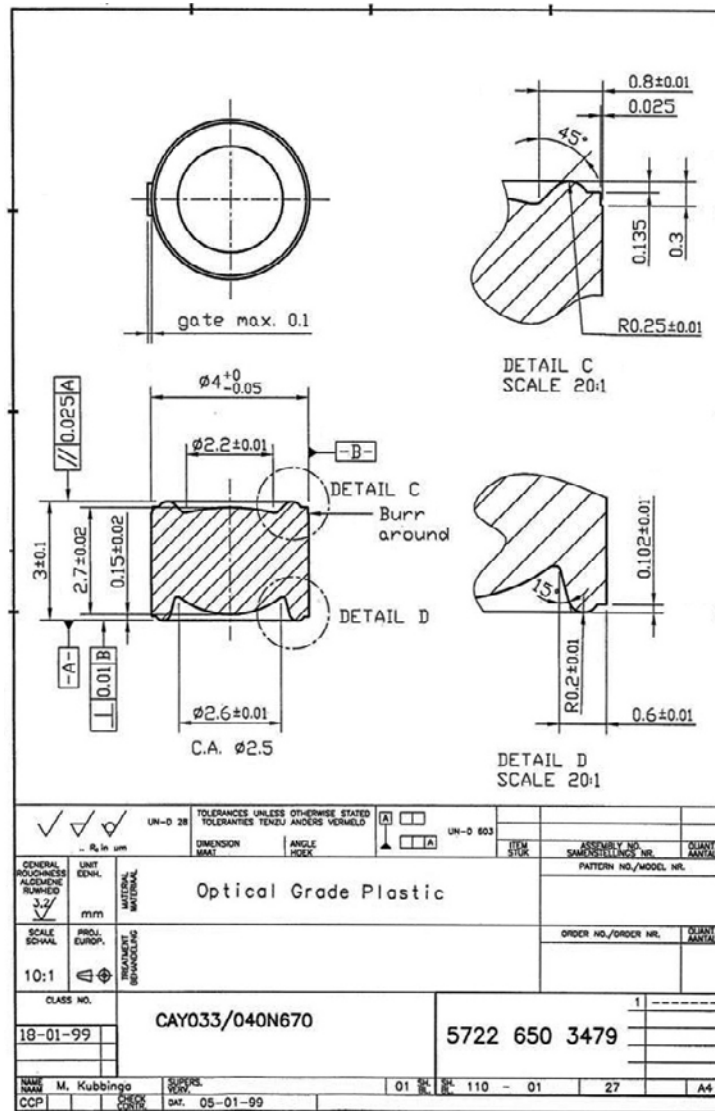
General Data:
Transmission: 90 % for 670 nm
Lens Material: Acrylic

Specifications subject to change without notice.
Zemax catalogue file available.

© Helvoet Rubber & Plastic Technologies NV. All rights reserved. Reproduction prohibited without written permission from the copyright owner

Automotive

© Helvoet Rubber & Plastic Technologies NV. All rights reserved. Reproduction prohibited without written permission from the copyright owner



X-ON Electronics

Largest Supplier of Electrical and Electronic Components

Click to view similar products for [LED Lighting Lenses](#) category:

Click to view products by [Laser Components](#) manufacturer:

Other Similar products are found below :

[LL01ED-AK40L06](#) [LL01ZZ-EX25L06-M2](#) [180182-0000](#) [FNP-N2-N083-0R NRW](#) [LL01ED-ALI55R49](#) [0190535300](#) [0410111300](#)
[0510113303](#) [0530997](#) [2710121](#) [C11004_TINA2-RS](#) [C12231_LENA-FRESNEL-LENS](#) [LL01ED-AKY24R49](#) [LL01CR-AYG15R49](#)
[LL01CR-OT32L06-M2](#) [LL01ZZ-AAA24L49](#) [LL01CR-CEN38L02](#) [LL01ZZ-AAA55L49](#) [LL01CR-AYG24R49](#) [LL01A00CZMB2-M2](#)
[LL01ED-AKY38R49](#) [LL01CR-CNE2545L06-M2](#) [LL01ZZ-AAA38L49](#) [LL01ED-AKV36R49](#) [LL01ED-ALI24R49](#) [LL01CR-AYG38R49](#)
[FN15973_RONDA-REC-60-C](#) [F16859_LINDA-ZT25](#) [C14169_LENA-CLEAR-LENS](#) [C16125_OLGA-W](#) [C17410_SPORT-2X2-FT6](#)
[C17414_SPORT-2X2-S6](#) [C17409_SPORT-2X2-FT6W](#) [C17360_SPORT-2X2-FT60](#) [C17434_ILONA-WW](#) [F16636_LINDA-W60](#) [10003](#)
[10003/15](#) [10048](#) [10049](#) [10108](#) [CP10960_RGBX-SS](#) [CP12395_LXP3-W](#) [10415](#) [10510](#) [1-1000288-0](#) [F14487_FLORENCE-1R-MAXI-WG](#)
[12667](#) [C14165_STRADA-2X2-ME-WIDE2](#) [C14605_HB-2X2-RW](#)