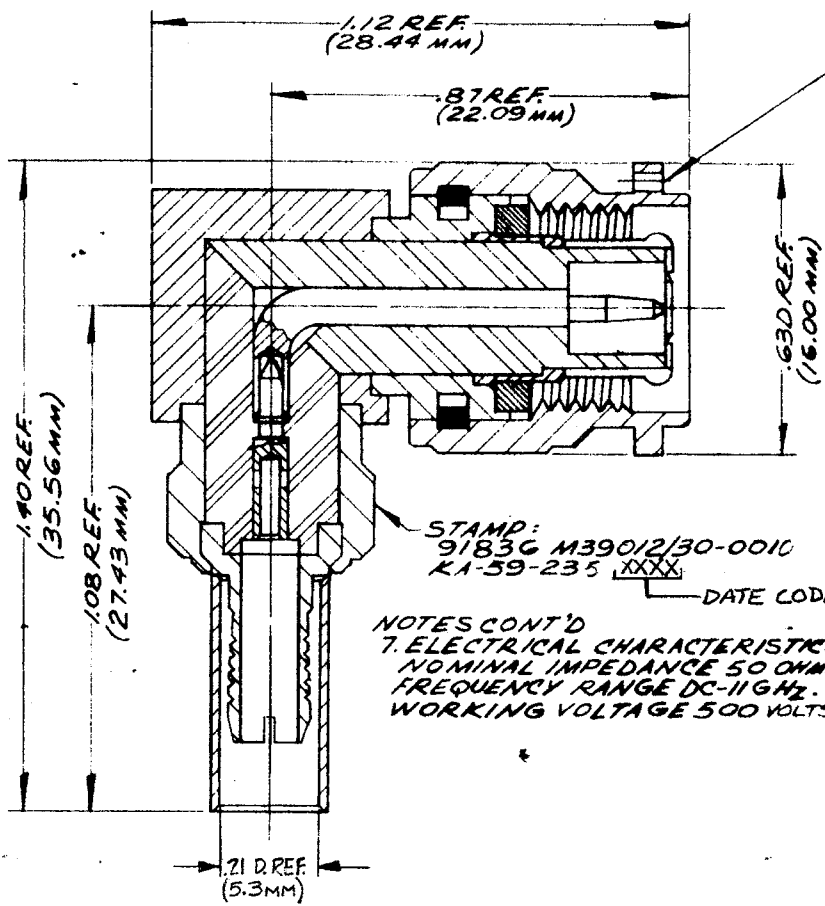


M39012/30-0010 GSD

REVISIONS	
SCALE	CHANGES
2	CN 21736 C PAS 20 APR 81
3	CN 32302 A LNM 20 JUN 90



STAMP:  
91836 M39012/30-0010  
KA-59-235 ~~XXXX~~ DATE CODE

NOTES CONT'D  
7. ELECTRICAL CHARACTERISTICS:  
NOMINAL IMPEDANCE 50 OHMS.  
FREQUENCY RANGE DC-11 GHz.  
WORKING VOLTAGE 500 VOLTS RMS

- NOTES:
1. FOR USE WITH RG-58, 58A, 58C, 141, 141A & 303/U CABLE GROUPS.
  2. FOR CABLE TRIMMING USE KTJ-113 & KTD-166.
  3. FOR CRIMPING USE DIE SIZE 01.
  4. FOR CABLING INSTRUCTIONS SEE CP-465.
  5. MATERIALS:  
CENTER ANGLE CONTACT M-F & OUTER CONTACT - BR. COP. QQ-C-530.  
CENTER CONTACT M - BRASS QQ-B-626.  
C-RING - PHOS. BRONZE, QQ-B-750.  
K-GRIP SLEEVE - COMMERCIAL BRONZE TUBE, ALLOY 220.  
ALL OTHER METAL PARTS - BRASS QQ-B-620.  
INSULATORS - TEFLON L-P-403
  6. FINISHES:  
CENTER CONTACTS - HARD GOLD PLATE PER MIL-G-45204.  
ALL OTHER METAL PARTS - SILVER PLATE, QQ-S-365.

UNLESS OTHERWISE SPECIFIED:  
1. TOLERANCES: FRACTIONS & 2 PLACE DECIMALS ± .010  
3 PLACE DECIMALS ± .004 ANGLES ± 0°30'  
T. I. R. CONCENTRICITY OF ANY 2 DIAMETERS MAY NOT EXCEED HALF THE SUM OF THEIR TOLERANCES.

2. REMOVE ALL BURRS, BREAK SHARP EDGES .005 MAX.
3. NO FILLETS PERMITTED.
4. SURFACE ROUGHNESS .63 MICROINCHES RMS MAX.
5. ALL DIMENSIONS PRIOR TO PLATING.
6. ALL PLATING IN ACCORDANCE WITH KER 10004.

SCALE	
KA-59-235	
USED ON	
REF	
TNC ANGLE PLUG	
DRAWN AMD	DATE 16 MAR 83
APPR. MJB	DATE 17 MAR 88
 KINGS ELECTRONICS CO., INC. TUGAHOE, NEW YORK 12157	
M39012/30-0010	

GSD

## X-ON Electronics

Largest Supplier of Electrical and Electronic Components

*Click to view similar products for [RF Connectors / Coaxial Connectors](#) category:*

*Click to view products by [Winchester](#) manufacturer:*

Other Similar products are found below :

[R125315120](#) [8915-1511-000](#) [89674-0827](#) [5916-1103-603](#) [0106-001-000](#) [6-0001-3](#) [6001-7071-019](#) [6002-7051-003](#) [6002-7551-202](#) [6059674-1](#) [619550-1](#) [630059-000](#) [M39012/25-0021](#) [M39012/79-3008](#) [M39030/3-01N](#) [M39030/3-03N](#) [M3933/25-29N](#) [M3933/25-36N](#) [6500-7071-046](#) [6501-1071-002](#) [M83723/72W24576](#) [M83723/72W2457N](#) [6769](#) [CX050L2AQ](#) [7002-1541-010](#) [7003-1572-002](#) [7004-1512-000](#) [7009-1511-004](#) [7010-1511-000](#) [7029-1511-060](#) [7101-1541-010](#) [7101-1571-002](#) [7105-1521-002](#) [7145-1521-002](#) [7209-1511-011](#) [7210-1511-012](#) [7210-1511-015](#) [7210-1511-019](#) [7210-1511-040](#) [7225-1512-050](#) [7242-1511-000](#) [73137-5015](#) [73216-2241](#) [73251-0111](#) [73251-0672](#) [73276-1501](#) [73366-0013](#) [73404-2300](#) [73413-6080](#) [734151610](#)